

## GENERAL ELECTRICAL & MECHANICAL SPECIFICATION

|                             |                             |
|-----------------------------|-----------------------------|
| Switch Rating:              | 1A @ 115Vac                 |
| (Switching Resistive load): |                             |
| No Mains Isolation          | 1A @ 24Vdc                  |
| Current Carrying Capacity   | 5A non switching            |
| Life:                       | >10,000 Cycles              |
| Operating Temperature:      | -20°C to +65 °C             |
| Proof Voltage:              | 750 Vdc (Initial)           |
| Insulation Resistance:      | >999 MΩ at 500Vdc (Initial) |
| Contact Resistance:         | <20 mΩ (Initial)            |
| Lock Type:                  | 5 Disc                      |
| Std. Qty. of Keys per Lock: | 2 Mild Steel Ni Plated      |
| Contact Material:           | Brass CZ108 Ag Plated       |
| Moulding Material:          | Polyamide 6.6 G.F. V0 Rated |
| Lock Housing:               | Zinc Alloy Bright Cr Plated |

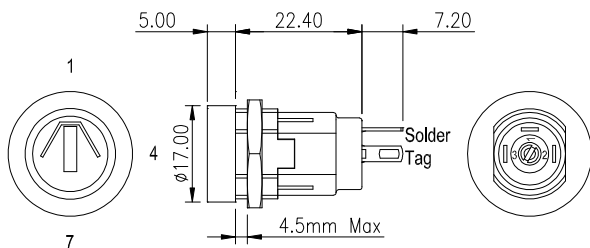


## GENERAL FEATURES

- Made in UK.
- Miniature key-operated Lock switch.
- Single or Double pole
- Up to 200 key combinations – keys to differ.
- Common keys available – keys to pass.
- Keys are double entry (they can be inserted into the lock either way up).
- Occupies small panel area.
- Easily assembled through front of equipment panel.
- Rear projection less than 30mm from panel.
- Optional Extras :
  - Moulded bezel for parallel lock headed versions (SRL 02101).

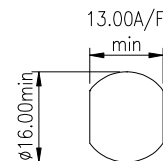
## SINGLE POLE LOCK SWITCH

### Parallel Lock Head 90° Indexing



Key Withdrawal Positions

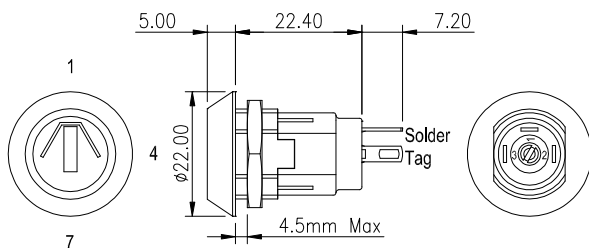
PANEL PIERCING DETAILS



| BASIC PART No. | TOTAL MOVEMENT | INDEXING | KEY WITHDRAWAL POSITIONS | SWITCH CONFIGURATION |
|----------------|----------------|----------|--------------------------|----------------------|
| SRL-5-A        | 90°            | 90°      | 1,4                      |                      |
| SRL-5-B        | 90°            | 90°      | 1 ONLY                   |                      |
| SRL-5-C        | 180°           | 90°      | 1,4,7                    |                      |
| SRL-5-N        | 180°           | 90°      | 1,4,7                    |                      |

## SINGLE POLE LOCK SWITCH

### Tapered Lock Head 90° Indexing



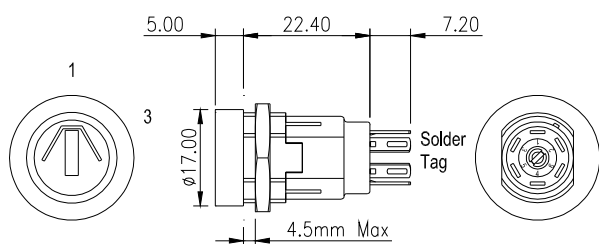
Key Withdrawal Positions

| BASIC PART No. | TOTAL MOVEMENT | INDEXING | KEY WITHDRAWAL POSITIONS | SWITCH CONFIGURATION |
|----------------|----------------|----------|--------------------------|----------------------|
| SRL-5-D        | 90°            | 90°      | 1,4                      |                      |
| SRL-5-E        | 90°            | 90°      | 1 ONLY                   |                      |
| SRL-5-F        | 180°           | 90°      | 1,4,7                    |                      |
| SRL-5-P        | 180°           | 90°      | 1,4,7                    |                      |

# SRL LOCK SWITCHES

## DOUBLE POLE LOCK SWITCH

### Parallel Lock Head 60° Indexing

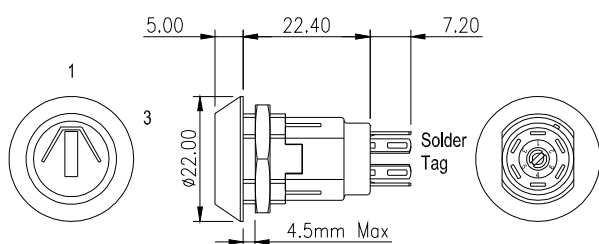


Key Withdrawal Positions

| BASIC PART No. | TOTAL MOVEMENT | INDEXING | KEY WITHDRAWAL POSITIONS | SWITCH CONFIGURATION |
|----------------|----------------|----------|--------------------------|----------------------|
| SRL-5-J        | 60°            | 60°      | 1,3                      | 1—2<br>3—5           |
| SRL-5-K        | 60°            | 60°      | 1 ONLY                   | 4—5<br>6—6           |

## DOUBLE POLE LOCK SWITCH

### Tapered Lock Head 60° Indexing

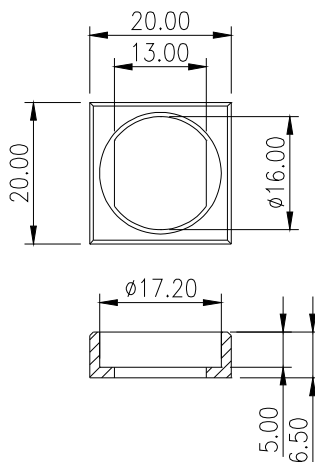


Key Withdrawal Positions

| BASIC PART No. | TOTAL MOVEMENT | INDEXING | KEY WITHDRAWAL POSITIONS | SWITCH CONFIGURATION |
|----------------|----------------|----------|--------------------------|----------------------|
| SRL-5-L        | 60°            | 60°      | 1,3                      | 1—2<br>3—5           |
| SRL-5-M        | 60°            | 60°      | 1 ONLY                   | 4—5<br>6—6           |

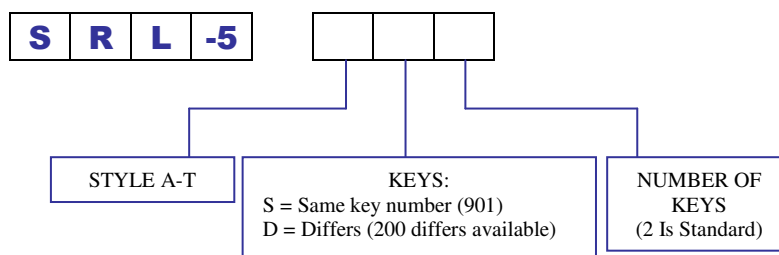
## OPTIONAL EXTRAS

Moulded Bezel for Parallel Lock Headed Versions



SUPPLIED LOOSE: ORDERING CODE SRL 02101

## SRL LOCK SWITCH ORDER CODE



## X-ON Electronics

Largest Supplier of Electrical and Electronic Components

*Click to view similar products for [Keylock Switches](#) category:*

*Click to view products by [Lorlin](#) manufacturer:*

Other Similar products are found below :

[89496-09](#) [89638-00](#) [58J9A90-01C02N](#) [719-0022-020](#) [719-0122-000](#) [719-0201-000](#) [719-0202-000](#) [719-0702-000](#) [84800-04](#) [88521-00](#)  
[GKNC33L](#) [GKNC3L](#) [PVA2OAH5](#) [14-136.025K](#) [14-235.022K](#) [AS6H-2K2A](#) [AS6M-2K1B](#) [1571487-1](#) [HW4K-2BF20](#) [JD7510H](#)  
[K6SLYE1.55NL327SD](#) [KH3C-20C](#) [89638-05](#) [A028301](#) [A165K-J2AL-2](#) [A165K-J2M-2](#) [A165K-J3AMR](#) [A165K-J3M](#) [205389 \(PAYGUARD](#)  
[BUTTON PAD\)](#) [2SWK131AL102](#) [30PA39-AML](#) [LW6MJ-2C64WWB](#) [AS6M-2K1A](#) [51-401.036D](#) [51-401.036K](#) [51-414.036D](#) [HW1K-](#)  
[3HF20](#) [4370039](#) [Y1112-2027CLFT](#) [4B01H322NCFQ](#) [51-155.025D](#) [51-195.025D](#) [51-378.AD](#) [51-404.036D](#) [51-405.036D](#) [51-415.036D](#) [1-](#)  
[1437597-8](#) [86945-05](#) [88169-05](#) [719-0204-000](#)