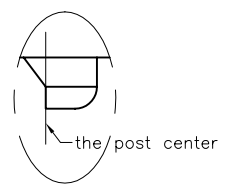
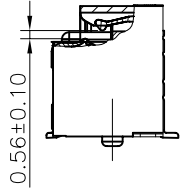
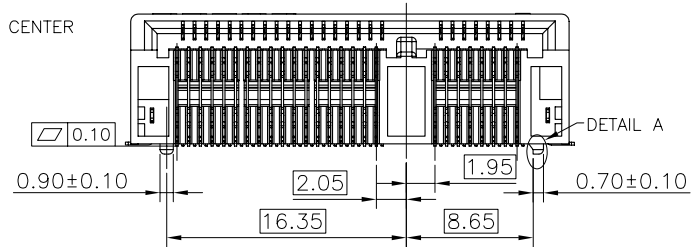
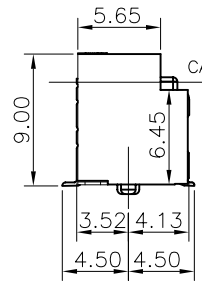
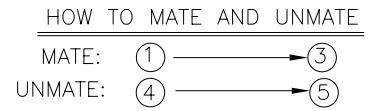
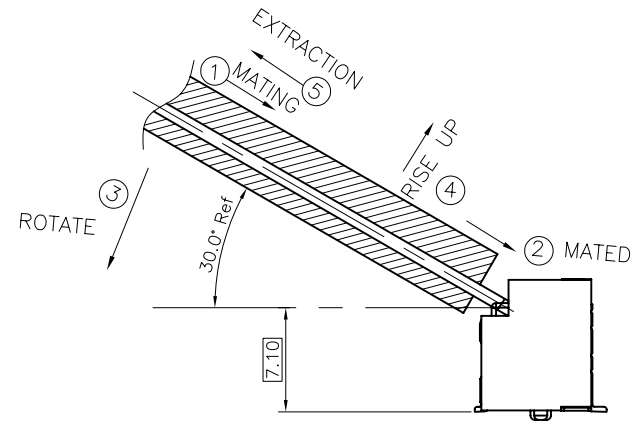
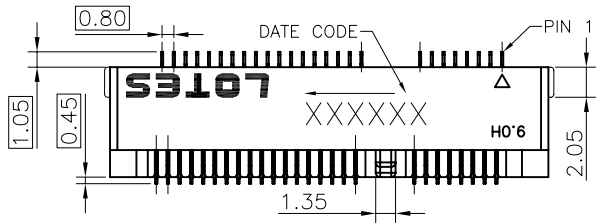
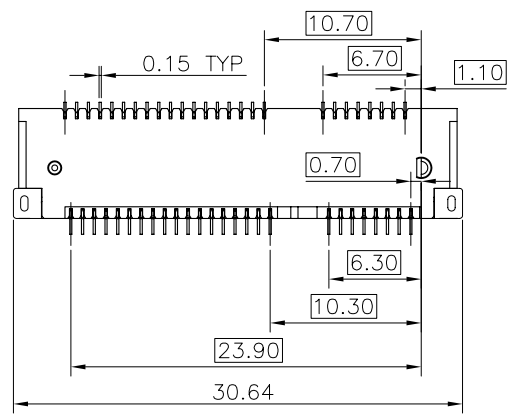


REV.	ECR/N NO./DESCRIPTION	DATE	DRAWN	CHECKED	APPROVE
9I	SN10***	04/01'11	XU	Raymond	Barney
9J	SN10***	04/01'11	XU	Raymond	Barney
9K	SN10***	05/04'11	XU	Raymond	Barney



DETAIL A
SCALE 5:1



TABLE

NO.	PART NO.	DESCRIPTION
8	AAA-PCI-047-P11_A	WHITE,Au 10u",HF
7	AAA-PCI-047-P10/P10_A	BLACK,Au 10u",HF
6	AAA-PCI-047-P06	WHITE,GOLD FLASH,Au1~3u"HF
5	AAA-PCI-047-P05	BLACK,Au 30u",HF
4	AAA-PCI-047-P02	GOLD FLASH,Au1~3u"HF
3	AAA-PCI-047-K04	BLACK,Au 30u"
2	AAA-PCI-047-K01/K02	BLACK,GOLD FLASH,Au1~3u"
1	AAA-PCI-047-K01/K02	BLACK,GOLD FLASH,Au1~3u"

GENERAL TOLERANCES UNLESS SPECIFIED		PART NO. SEE TABLE	LOTES		
X.± 0.35	X.°± 3°				
.XX ± 0.25	.X°± 2°	APPROVED BY Barney	TITLE MINI PCI EXPRESS 9.0H 0.8PITCH 52P		
.XXX ± 0.15	.XX°± 1°	CHECKED BY Raymond	DWG NO. AP-AAA-PCI-047		
CUSTOMER DRAWING		DRAWN BY XU	SHEET 1 / 6	SCALE 2 : 1	REV 9K
SIZE A4	UNITS MM[INCH]				

NOTES:

1.MATERIAL:

CONTACT:BRASS,50u"Min.NICKEL UNDERPLATING.

GOLD PLATING ON CONTACT AREA AND ON SOLDER AREA.(DETAIL SEE TABLE)

PEG:BRASS,50u"Min.NICKEL UNDERPLATING,

MATTE-Tin 100u"Min OVER NICKEL.

HOUSING:LCP,UL-94V0

2.ROHS,HF COMPLIANT.

3.ELECTRICAL PERFORMANCE

CONTACT RESISTANCE:55mΩ MAX.PER CONTACT

INSULATION RESISTANCE:500MΩ MIN

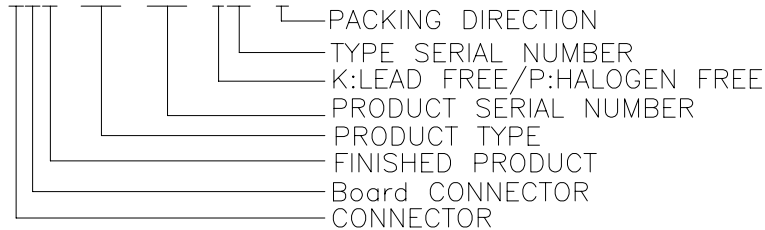
4.MECHANICAL PERFORMANCE

DURABILITY:50 CYCLES

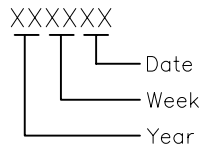
MATING AND UNMATING FORCE:2.3Kgf MAX

5.IR REFLOW TEMPERATURE:250°C±10°C FOR 10 SECONDS MAX.

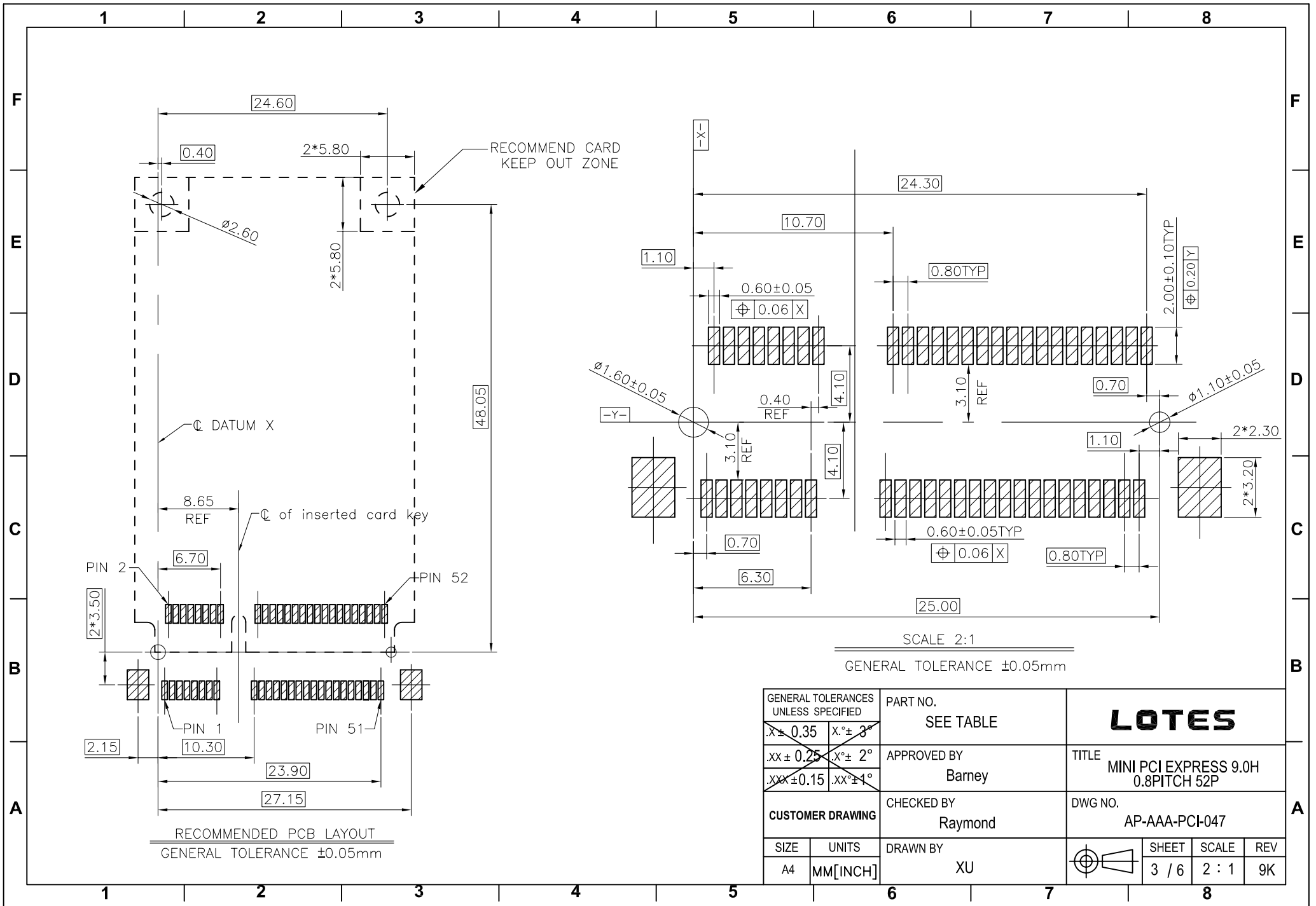
6.PRODUCT NUMBER NOTE:AAA-PCI-***-*** *

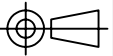


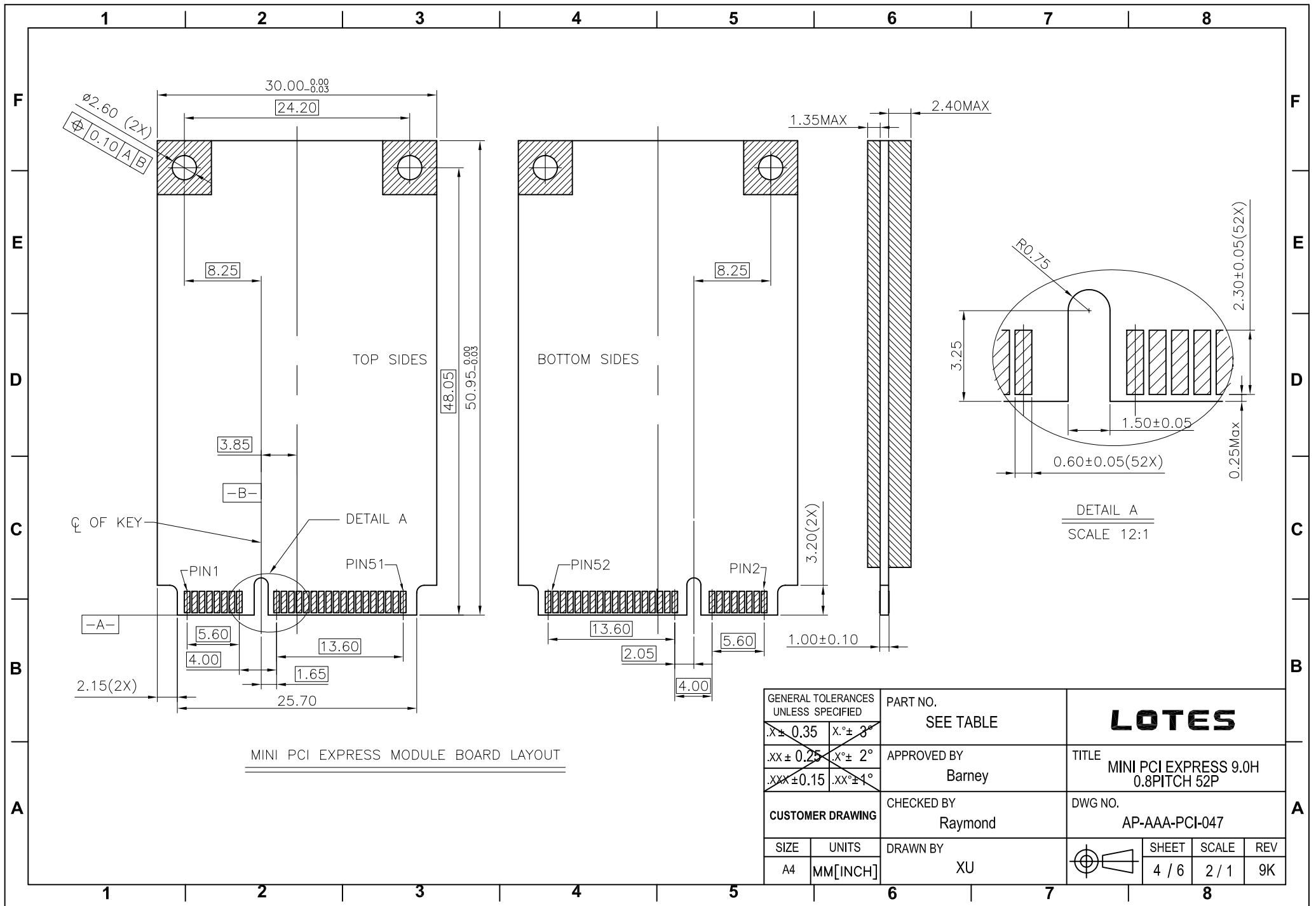
7.DATE CODE NOTE:



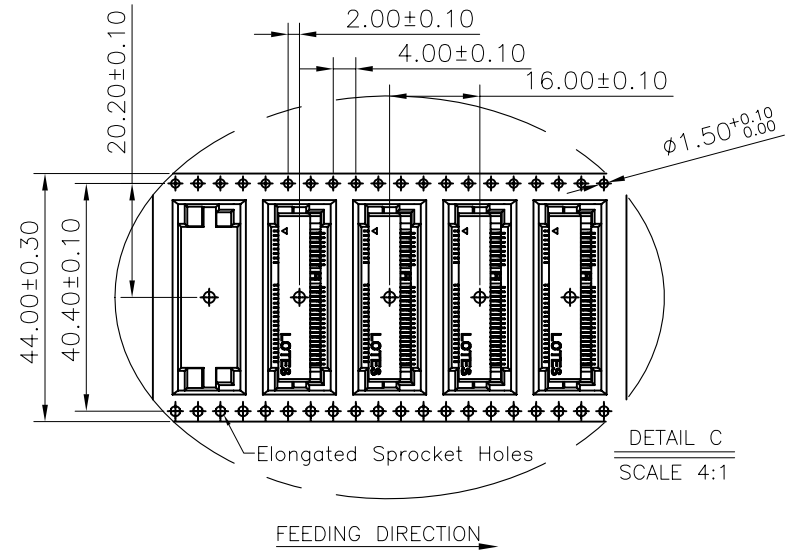
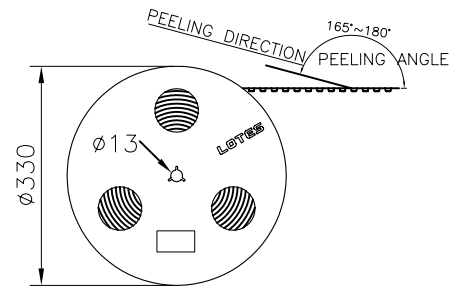
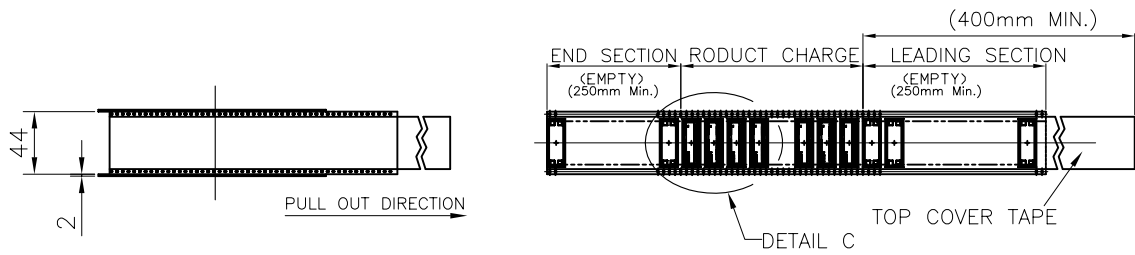
GENERAL TOLERANCES UNLESS SPECIFIED		PART NO. SEE TABLE	LOTES						
.X ± 0.35	X.° ± 3°					APPROVED BY Barney	TITLE MINI PCI EXPRESS 9.0H 0.8PITCH 52P		
.XX ± 0.25	X.° ± 2°								
.XXX ± 0.15	.XX.° ± 1°								
CUSTOMER DRAWING		CHECKED BY Raymond	DWG NO. AP-AAA-PCI-047						
SIZE A4	UNITS MM[INCH]	DRAWN BY XU		SHEET 2 / 6	SCALE 5 : 2	REV 9K			



GENERAL TOLERANCES UNLESS SPECIFIED		PART NO. SEE TABLE	LOTES		
.X ± 0.35	X° ± 3°				
.XX ± 0.25	X° ± 2°	CHECKED BY Raymond	DWG NO. AP-AAA-PCI-047		
.XXX ± 0.15	.XX° ± 1°	CUSTOMER DRAWING	DRAWN BY XU		
SIZE A4	UNITS MM[INCH]		 SHEET 3 / 6	SCALE 2 : 1	REV 9K



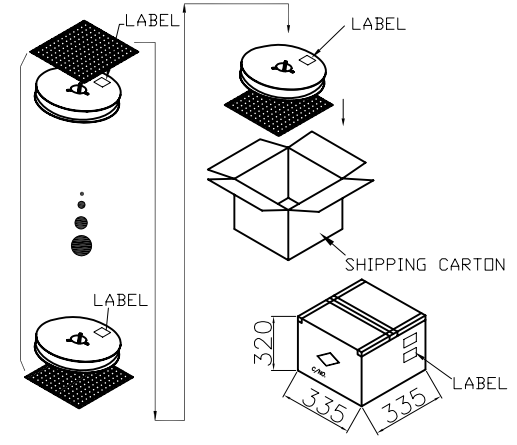
GENERAL TOLERANCES UNLESS SPECIFIED		PART NO. SEE TABLE	LOTES		
.X ± 0.35	X.° ± 3°				
.XX ± 0.25	X.° ± 2°	APPROVED BY Barney	TITLE MINI PCI EXPRESS 9.0H 0.8PITCH 52P		
.XXX ± 0.15	.XX.° ± 1°	CHECKED BY Raymond	DWG NO. AP-AAA-PCI-047		
CUSTOMER DRAWING		DRAWN BY XU	SHEET 4 / 6	SCALE 2 / 1	REV 9K
SIZE A4	UNITS MM [INCH]				



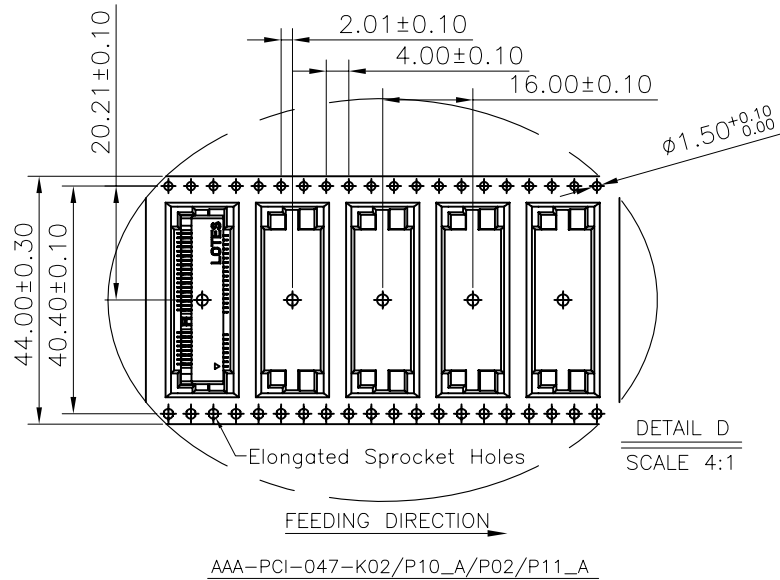
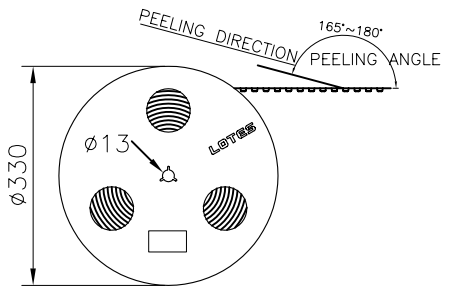
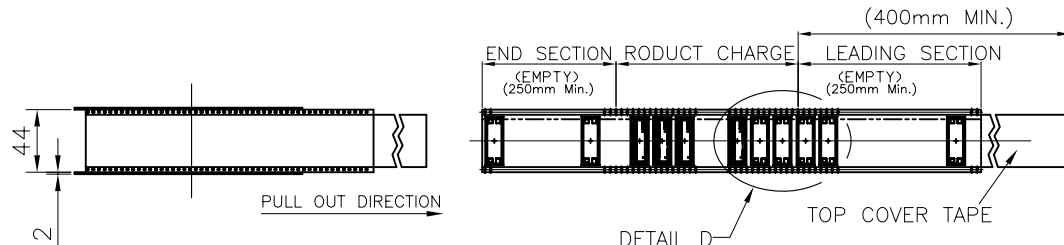
AAA-PCI-047-K01/K04//P05/P06/P10

SCALE 4:1

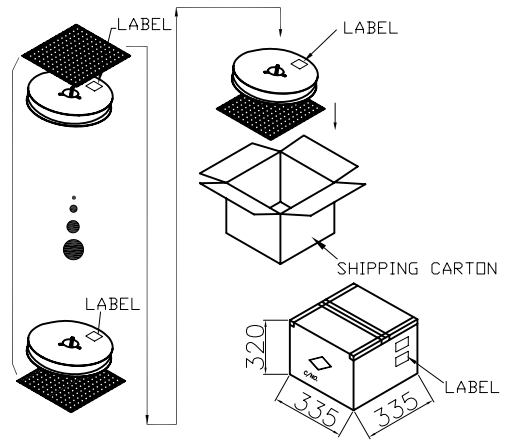
- NOTES:
- MATERIAL :
 - CARRY TAPE: PS
 - COVER TAPE: PET
 - SHIPPING CARTON: CORRUGATED FIBER
 - DIMENSION :
 - REEL: W=44.5, $\phi A=330$
 - SHIPPING CARTON: L=335, W=335, H=300 (INNER)
 - QUANTITY :
 - PRIMARY PACKING: 350 PCS/REEL
 - SECONDARY PACKING: 6 REELS/CARTON(2100PCS)
 - PEELING RESISTANCE: 20gf~120gf.
 - PEELING SPEED: 300mm/minutes.



GENERAL TOLERANCES UNLESS SPECIFIED		PART NO. SEE TABLE	LOTES			
X ± 0.35	X.° ± 3°					
.XX ± 0.25	X.° ± 2°	APPROVED BY Barney	TITLE MINI PCI EXPRESS 9.0H 0.8PITCH 52P			
.XXX ± 0.15	.XX° ± 1°	CHECKED BY Raymond	DWG NO. AP-AAA-PCI-047			
CUSTOMER DRAWING		DRAWN BY XU	SHEET 5 / 6	SCALE N/A	REV 9K	
SIZE A4	UNITS MM[INCH]					



- NOTES:
- MATERIAL :
 - CARRY TAPE: PS
 - COVER TAPE: PET
 - SHIPPING CARTON: CORRUGATED FIBER
 - DIMENSION :
 - REEL: W=44.5, $\phi A=330$
 - SHIPPING CARTON: L=335, W=335, H=320 (INNER)
 - QUANTITY :
 - PRIMARY PACKING: 350 PCS/REEL
 - SECONDARY PACKING: 6 REELS/CARTON(2100PCS)
 - PEELING RESISTANCE: 20gf~120gf.
 - PEELING SPEED: 300mm/minutes.



GENERAL TOLERANCES UNLESS SPECIFIED		PART NO. SEE TABLE	LOTES			
.X \pm 0.35	X. $^{\circ}$ \pm 3 $^{\circ}$					
.XX \pm 0.25	.X. $^{\circ}$ \pm 2 $^{\circ}$	APPROVED BY Barney	TITLE MINI PCI EXPRESS 9.0H 0.8PITCH 52P			
.XXX \pm 0.15	.XX. $^{\circ}$ \pm 1 $^{\circ}$	CHECKED BY Raymond	DWG NO. AP-AAA-PCI-047			
SIZE	UNITS	DRAWN BY		SHEET	SCALE	REV
A4	MM[INCH]	XU		6 / 6	N/A	9K

X-ON Electronics

Largest Supplier of Electrical and Electronic Components

Click to view similar products for [Standard Card Edge Connectors](#) category:

Click to view products by [LOTES](#) manufacturer:

Other Similar products are found below :

[CR7E-30DB-3.96E\(72\)](#) [6364499-1](#) [6565204-6](#) [147889-1](#) [EBT15622B2X](#) [1-582587-1](#) [284-0102-12100](#) [286-0052-12101A](#) [306022901000000](#)
[307-012-502-202](#) [307-056-520-300](#) [A6D22DS29C2](#) [1926088-2](#) [2129318-1](#) [287-0032-12101](#) [345-060-559-303](#) [392-008-559-201](#) [534671-1](#)
[341-240-317](#) [345-044-500-300](#) [346-240-318](#) [387-012-523-300](#) [395-100-524-300](#) [09-07-2032](#) [10035388-802LF](#) [10115859-011LF](#) [10122859-](#)
[009LF](#) [101269333204245CLF](#) [530555-1](#) [66925-516LF](#) [5145409-2](#) [73726-0005](#) [66308-1](#) [5036A30](#) [PEC-07-02-T-S-A](#) [346-014-520-801](#)
[KSLX-62-BR](#) [307-048-502-202](#) [CE100F26-7-C](#) [CE100F28-3-D](#) [CE100F28-4-D](#) [CE156F18-9-C](#) [CE156F22-5-D](#) [CE156F22-9-C](#) [CT100F22-](#)
[2-D](#) [CT100F22-3-D](#) [CT100F24-2-D](#) [CT100F24-3-D](#) [CT100F24-6-C](#) [CT156F22-4-D](#)