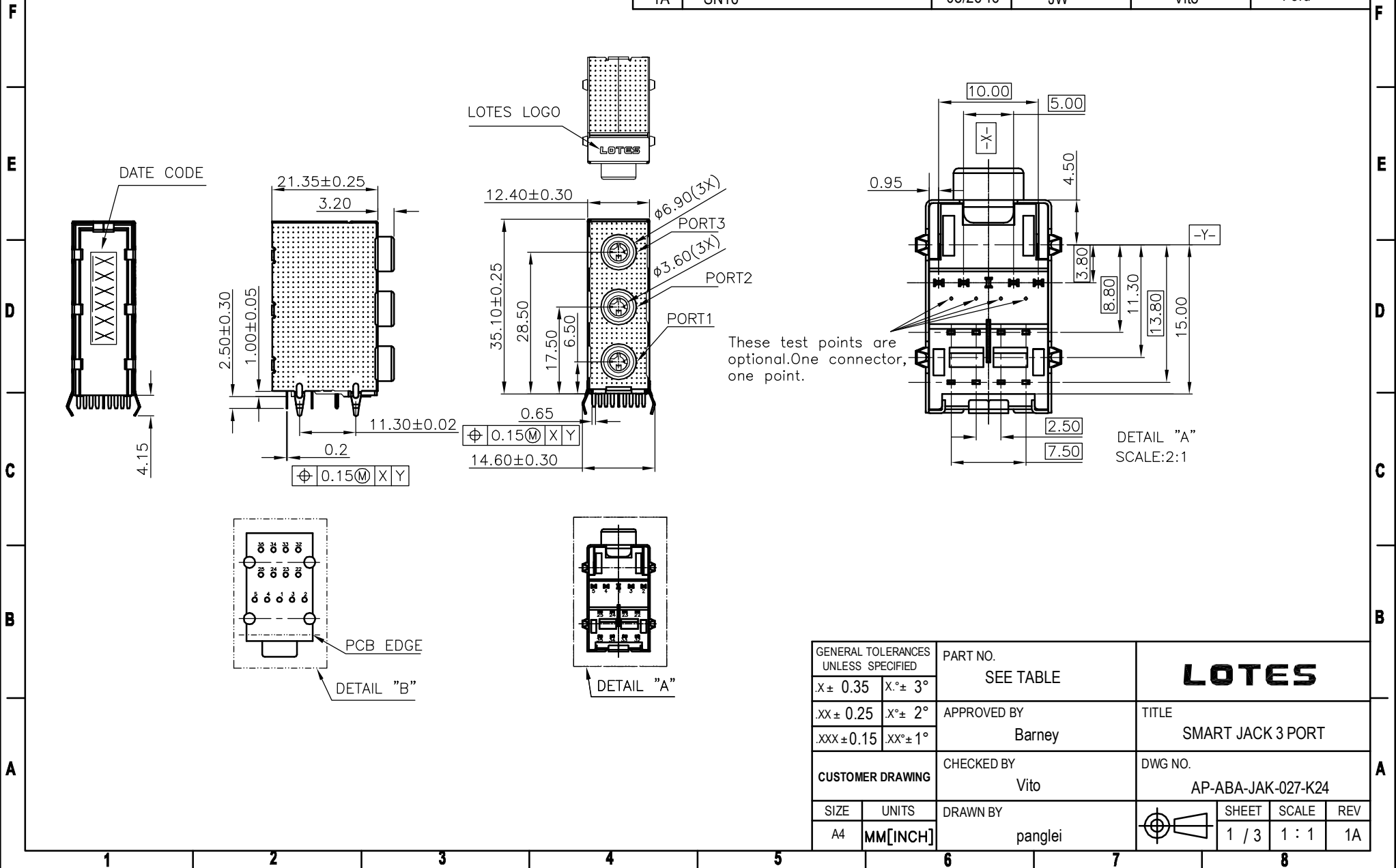


REV.	ECR/N NO./DESCRIPTION	DATE	DRAWN	CHECKED	APPROVE
1	SN15100	08/26'15	panglei	Vito	Barney
1A	SN16***	08/26'16	JW	Vito	Ford



NOTES:

1.MATERIALS:

HOUSING: PA66+30%GF,UL 94V-0,COLOR BLACK
 SPACER:PA66+30%GF,UL 94V-0,COLOR BLACK
 HAT: PBT+30%GF,UL94V-0
 SHIELD: SUS430,T=0.20mm
 TERMINALS: C2680,T=0.2mm
 GROUND TERMINAL: C2680,T=0.20mm

2.PLATING:

TERMINALS:NICKEL 50 u" MIN UNDERPLATED
 MATTE TIN 100 u" MIN ON SOLDER TAIL AREA
 Au ON CONTACT AREA-SEE TABLE
 GROUND TERMINAL:NICKEL 50 u" MIN UNDERPLATED
 MATTE TIN 100 u" MIN ON SOLDER TAIL AREA
 SHIELD:NICKEL 20 u" MIN AND TIN 50 u"MIN ON SOLDER TAIL AREA

3.WAVE SOLDER CAPABLE TO 245±5°C FOR 3±0.5S.

4.ROHS COMPLIANT

5.MECHANICAL PERFORMANCE.

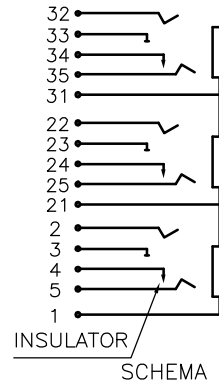
INSERTION FORCE:3.0kgf MAX..
 WITHDRAWAL FORCE:0.3kgf MIN..
 DURABILITY:1500 CYCLES.

6.ELECTRICAL PERFORMANCE.

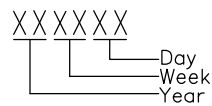
INSULATION RESISTANCE:1000MΩ MIN..
 DIELECTRIC WITHSTANDING VOLTAGE:500VAC
 CONTACT RESISTANCE:50mΩMAX.(INITIAL)
 100mΩMAX.(AFTER LIFE TEST)

7.ENVIRONMENTAL CHARACTERSTICS.

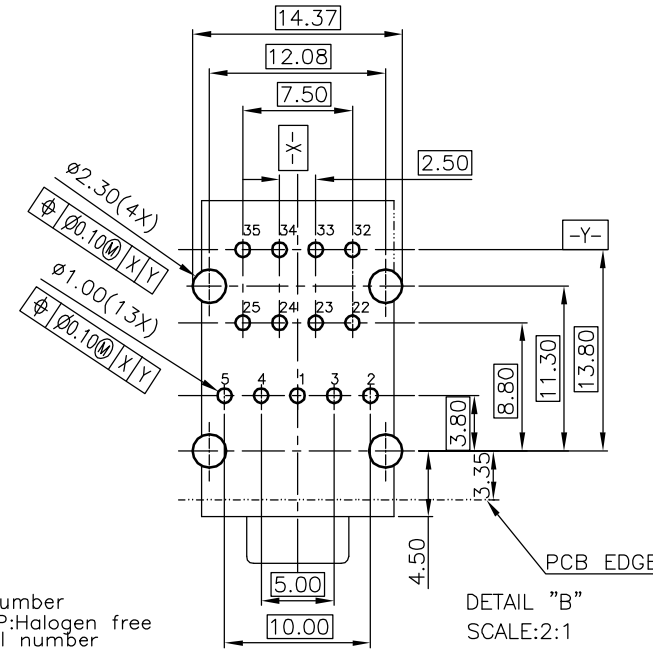
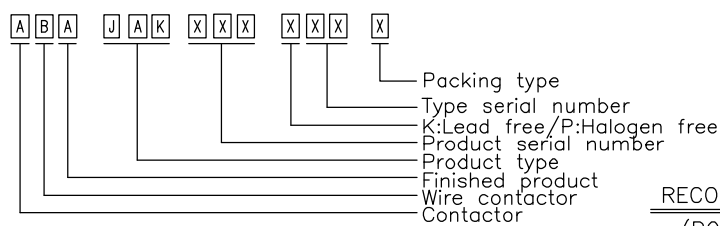
STORAGE TEMPERATURE RANGE:-40℃~+85℃
 OPERATION TEMPERATURE:-25℃~+85℃



8.DATE CODE NOTE:



9.PRODUCT NUMBER NOTE:

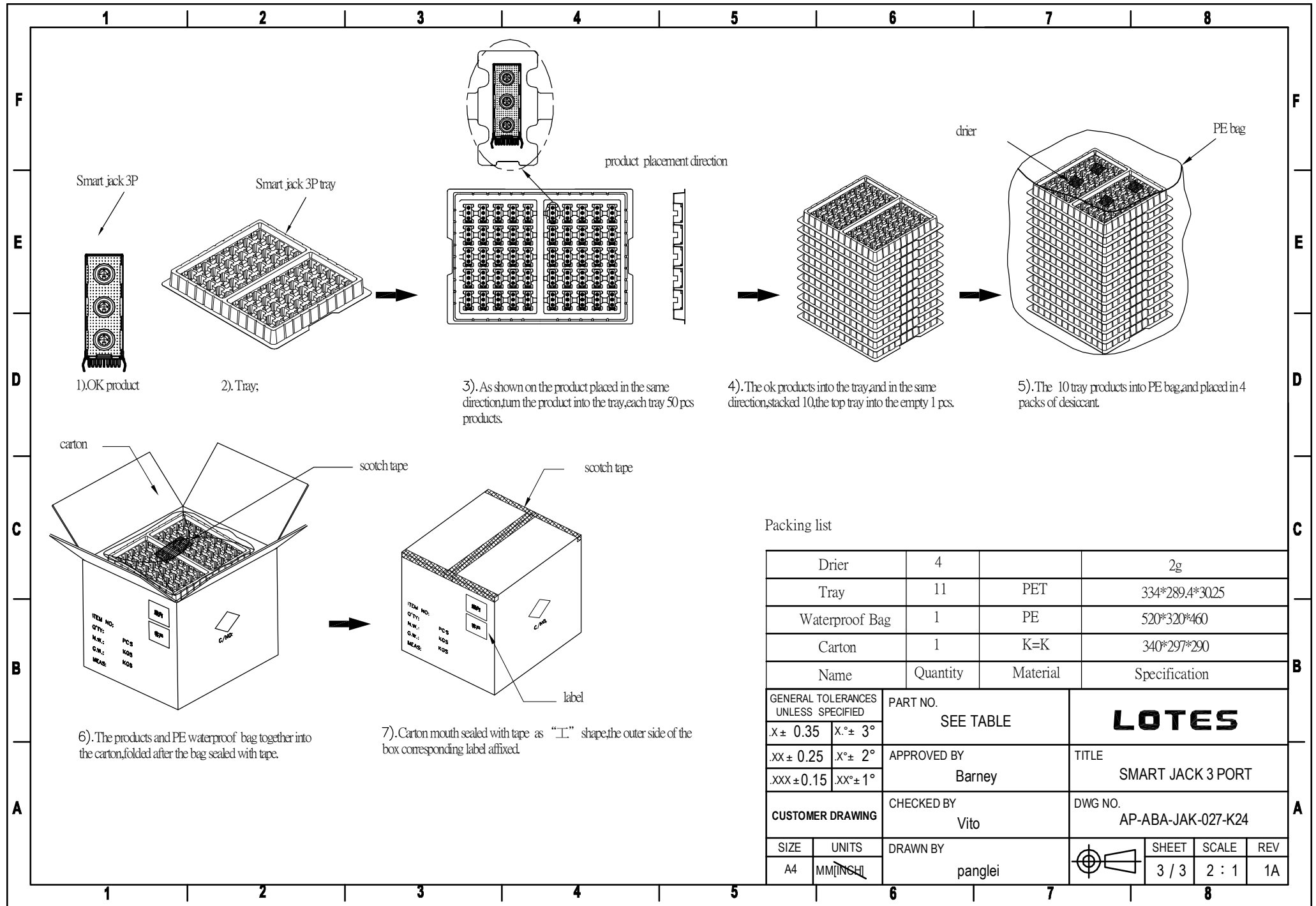


RECOMMENDED PCB LAYOUT(TOP VIEW)
 (PCB THICKNESS:1.57±0.05mm.)
 TOLERANCE:±0.05mm

A

TABLE				
PART NO.	PORT 1	PORT 2	PORT 3	CONTACT AREA
ABA-JAK-027-K24	RED 701C	GREEN 577C	BLUE 284C	Au 1u"min

GENERAL TOLERANCES UNLESS SPECIFIED		PART NO. SEE TABLE	LOTES		
X ± 0.35	X° ± 3°				
.XX ± 0.25	X° ± 2°		APPROVED BY Barney	TITLE SMART JACK 3 PORT	
.XXX ± 0.15	.XX° ± 1°	CHECKED BY Vito	DWG NO. AP-ABA-JAK-027-K24		
CUSTOMER DRAWING		DRAWN BY panglei	SHEET 2 / 3	SCALE 1 : 1	REV 1A
SIZE A4	UNITS MM[INCH]				



Packing list

Drier	4		2g							
Tray	11	PET	334*289.4*30.25							
Waterproof Bag	1	PE	520*320*460							
Carton	1	K=K	340*297*290							
Name	Quantity	Material	Specification							
GENERAL TOLERANCES UNLESS SPECIFIED		PART NO. SEE TABLE								
X ± 0.35	X° ± 3°	<div style="text-align: center; font-size: 2em; font-weight: bold;">LOTES</div>								
.XX ± 0.25	X° ± 2°									
.XXX ± 0.15	.XX° ± 1°									
APPROVED BY Barney		TITLE SMART JACK 3 PORT								
CUSTOMER DRAWING CHECKED BY Vito		DWG NO. AP-ABA-JAK-027-K24								
SIZE A4	UNITS MM [INCH]	DRAWN BY panglei	<table border="1" style="display: inline-table;"> <tr> <td rowspan="2" style="text-align: center;"> </td> <td>SHEET</td> <td>SCALE</td> <td>REV</td> </tr> <tr> <td>3 / 3</td> <td>2 : 1</td> <td>1A</td> </tr> </table>		SHEET	SCALE	REV	3 / 3	2 : 1	1A
	SHEET	SCALE	REV							
	3 / 3	2 : 1	1A							

X-ON Electronics

Largest Supplier of Electrical and Electronic Components

Click to view similar products for [HDMI, Displayport & DVI Connectors](#) category:

Click to view products by [LOTES](#) manufacturer:

Other Similar products are found below :

[30-528](#) [30-504](#) [33DVIR-24S1B](#) [47648-2000](#) [TC142X](#) [1932649-1](#) [HAGBH](#) [AABII](#) [ABIBG](#) [AAIBH](#) [52355](#) [XHLJQ-00026](#) [HDMI-019R](#)
[G46M2013201AWEU](#) [ST-0277D00-052-142](#) [HC-PJ-320A-3P-D](#) [HC-PJ-3133-5P-D](#) [PJ-342](#) [141](#) [PJ-320A-4P](#) [DIP](#) [HC-PJ-325C-5P](#) [HC-PJ-](#)
[320D-4P-S](#) [HC-PJ-3133-6P-S](#) [D-SUB-DR-9PCM-CB](#) [ST-0275S00-082-182](#) [HC-PJ-320A-4P-D](#) [HC-PJ-325A-5P](#) [HC-PJ-3134-6P-D](#) [HDR-](#)
[HX-102DIP](#) [HDMI-GD-121PWB](#) [C2939191](#) [C2939584](#) [PJ-208](#) [PJ-2040](#) [PJ-3580A-6A](#) [PJ-399M](#) [PJ-3200A-3A](#) [PJ-328B-4B](#) [PJ-3930-7A](#)
[PJ-615-5A](#) [PJ-332-6A](#) [KH-HDMI-0001](#) [KH-PJ-209-SMT](#) [KH-HDMI-0035-XK](#) [KH-PJ-328A-5P](#) [KH-PJ-322](#) [KH-PJ-327E-SMT](#) [KH-PJ-](#)
[320A-5.6](#) [KH-HDR15P-F3.08](#) [KH-HDMI-0005A-SMT](#) [KH-HDMI-0021-JBS](#)