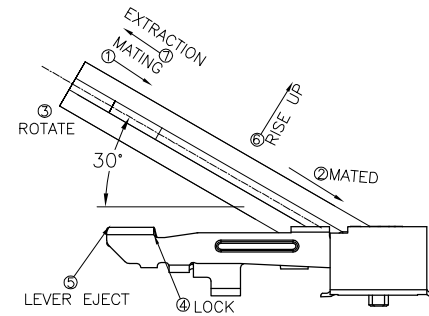
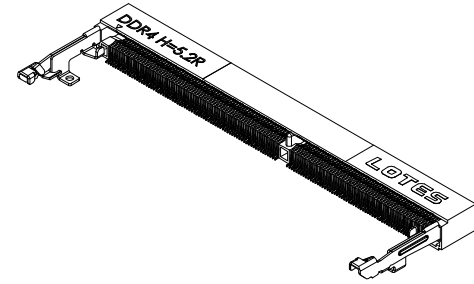
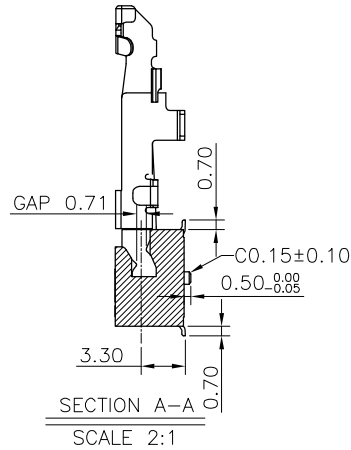
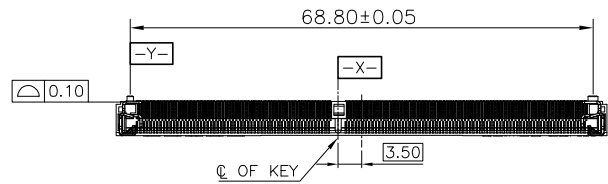
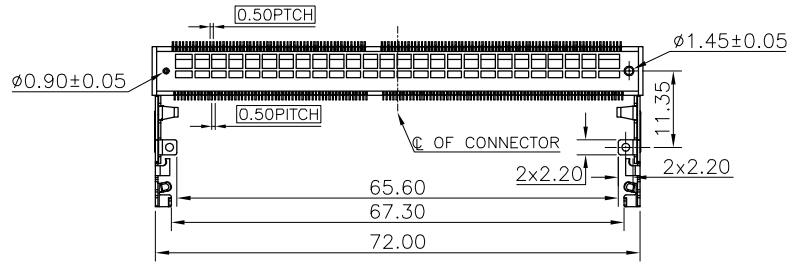
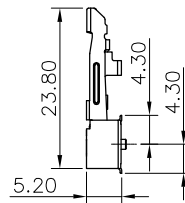
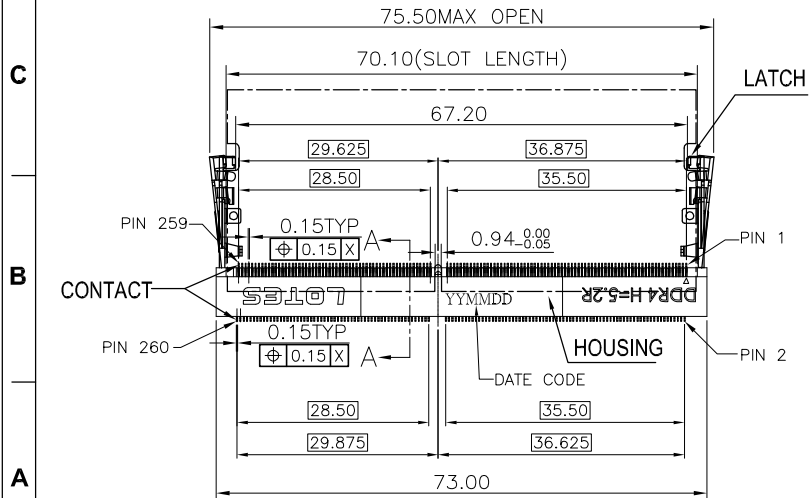


REV.	ECR/N NO./DESCRIPTION	DATE	DRAWN	CHECKED	APPROVE
C	RD140**	05/20'15	XU	Vito	Barney
D	RD140**	08/12'15	XU	Vito	Barney
E	RD140**	09/09'15	XU	Vito	Barney



HOW TO MATE AND UNMATE
 MATE: ① → ④
 UNMATE: ⑤ → ②
 SCALE 2:1



GENERAL TOLERANCES UNLESS SPECIFIED		PART NO. SEE TABLE	LOTES			
X ± 0.35	X° ± 3°					
.XX ± 0.25	.X° ± 2°		APPROVED BY Barney	TITLE SODDR4 5.2H 260 PIN RVS TYPE		
.XXX ± 0.15	.XX° ± 1°	CHECKED BY Vito	DWG NO. AP-ADDR0208			
CUSTOMER DRAWING		DRAWN BY XU		SHEET 1 / 5	SCALE 1 : 1	REV E
SIZE A4	UNITS MM [INCH]					

NOTES:

1.MATERIALS:

HOUSING: LCP,UL 94V-0.

CONTACT: BRASS C2680.

LATCH: STAINLESS STEEL SUS301.

2.FINISH:

1)CONTACT:UNDERPLATED NICKEL 50~150u",
GOLD PLATED ON SOLDER AREA.
GOLD PLATED ON CONTACT AREA.(DETAL SEE TABLE)

2)LATCH:UNDERPLATED NICKEL 50~150u",MATTE TIN 80u" MIN.

3.ELECTRICAL PERFORMANCE

LLCR INITIAL 50mΩ MAX PER CONTACT.

FINAL ΔLLCR=20mΩ MAX

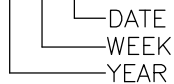
4.MECHANICAL PERFORMANCE,

MATING & UNMATING FORCE: 6.1 Kgf MAX.

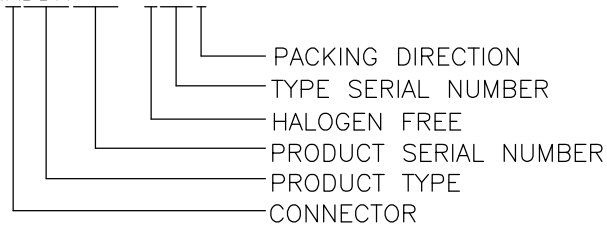
5.IR REFLOW:

THE PEAK TEMPERATURE ON THE BOARD SHALL BE MAINTAINED FOR 10 SECONDS AT 260±5°C.

6. DC: XXXXXX



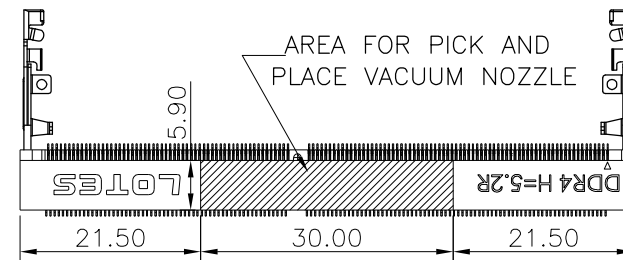
7.PRODUCT NUMBER NOTE:ADDR****-****



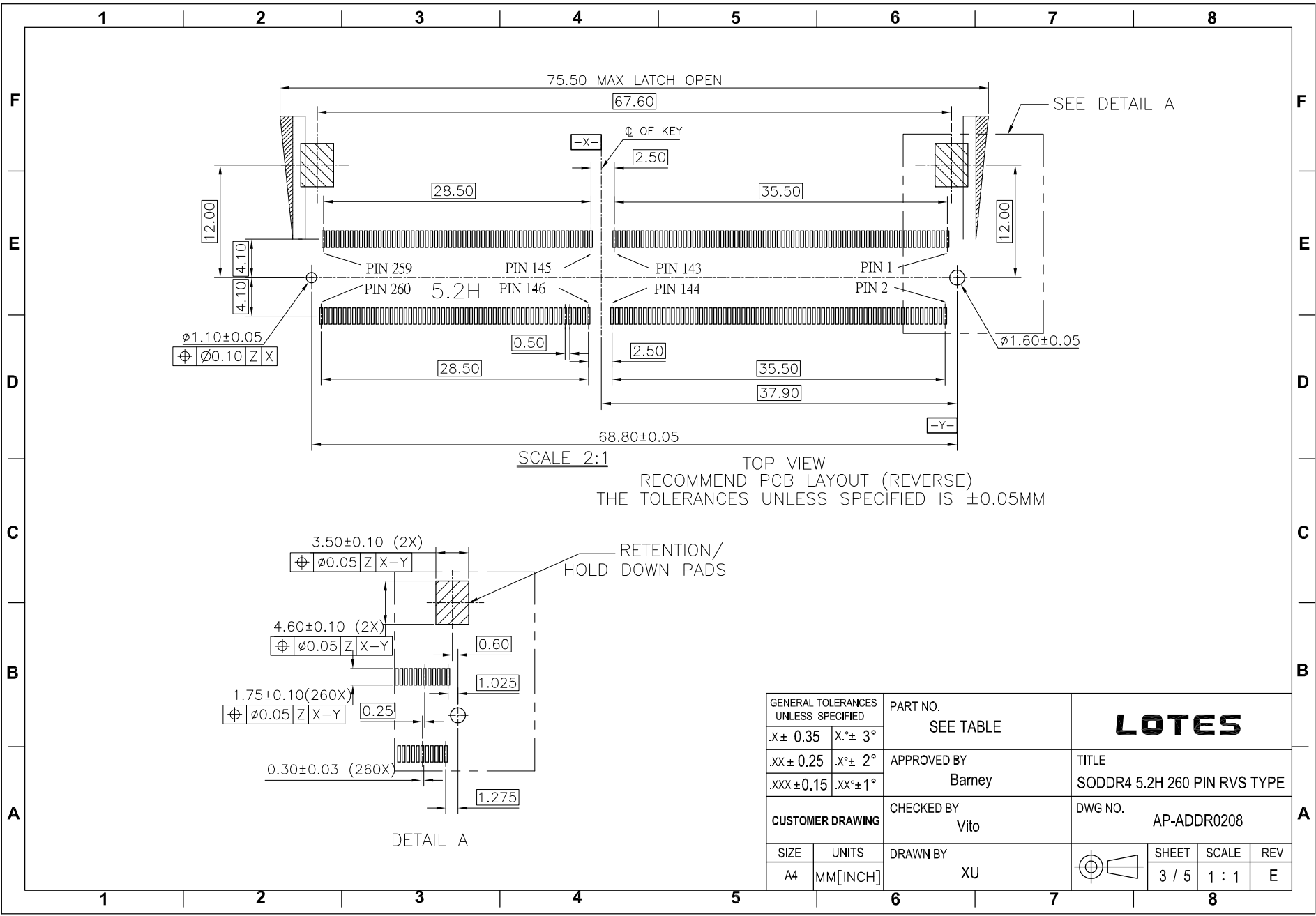
8.RoHS COMPLIANT.
HF COMPLIANT.

TABLE:

NO.	PART NO.	COLOR	DESCRIPTION
1	ADDR0208-P001A	BLACK	GOLD G/F ON CONTACT AREA
			GOLD G/F ON SOLDER AREA
2	ADDR0208-P002A	BLACK	GOLD 10u" ON CONTACT AREA
			GOLD G/F ON SOLDER AREA
3	ADDR0208-P003A	BLACK	GOLD 15u" ON CONTACT AREA
			GOLD G/F ON SOLDER AREA
4	ADDR0208-P004A	BLACK	GOLD 30u" ON CONTACT AREA
			GOLD G/F ON SOLDER AREA

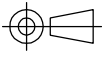


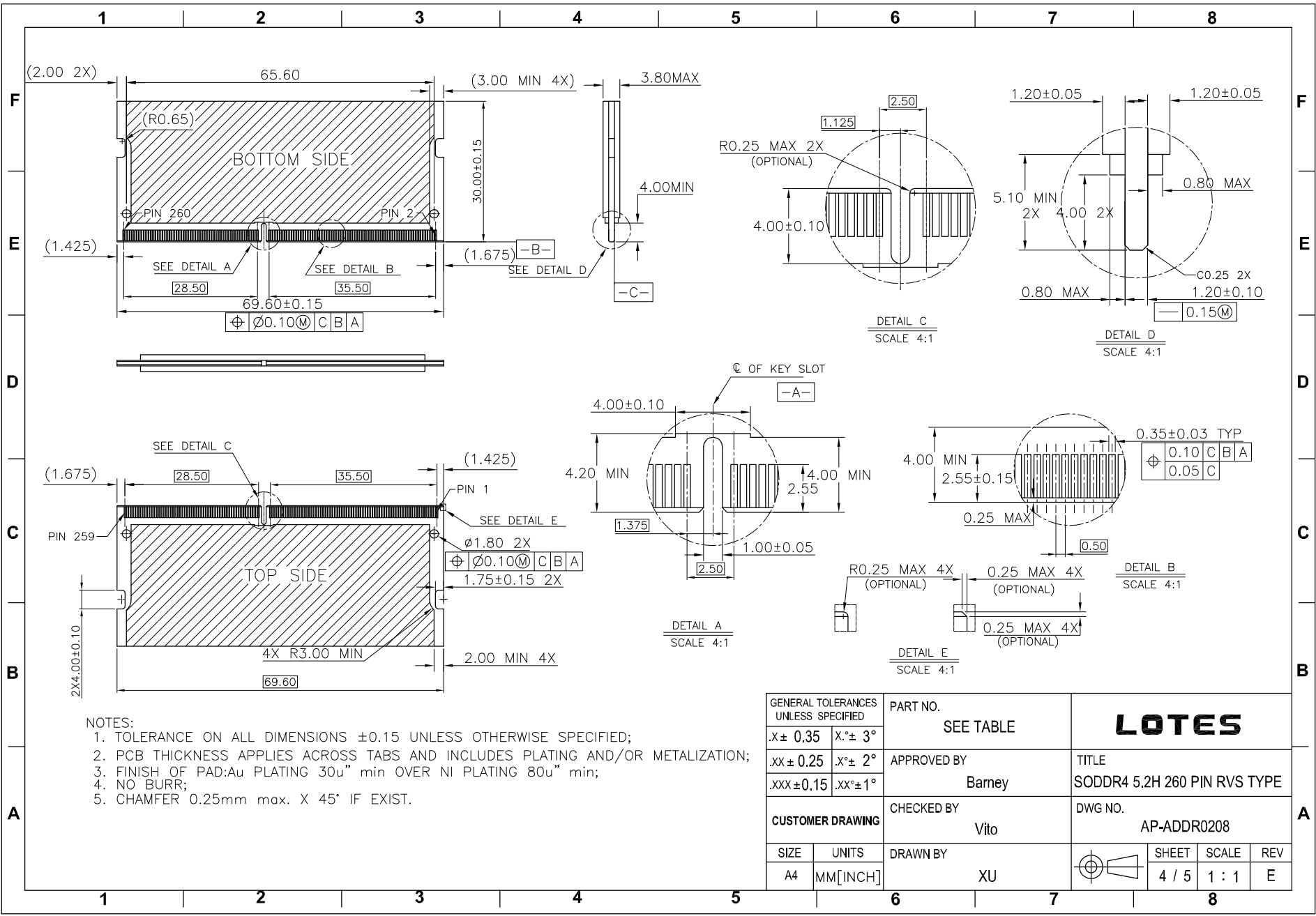
GENERAL TOLERANCES UNLESS SPECIFIED		PART NO. SEE TABLE	LOTES		
X ± 0.35	X.° ± 3°				
.XX ± 0.25	.X.° ± 2°	APPROVED BY Barney	TITLE SODDR4 5.2H 260 PIN RVS TYPE		
.XXX ± 0.15	.XX.° ± 1°	CHECKED BY Vito	DWG NO. AP-ADDR0208		
CUSTOMER DRAWING		DRAWN BY XU	SHEET 2 / 5	SCALE 5 : 4	REV E
SIZE A4	UNITS MM [INCH]				



SCALE 2:1
 TOP VIEW
 RECOMMEND PCB LAYOUT (REVERSE)
 THE TOLERANCES UNLESS SPECIFIED IS ±0.05MM

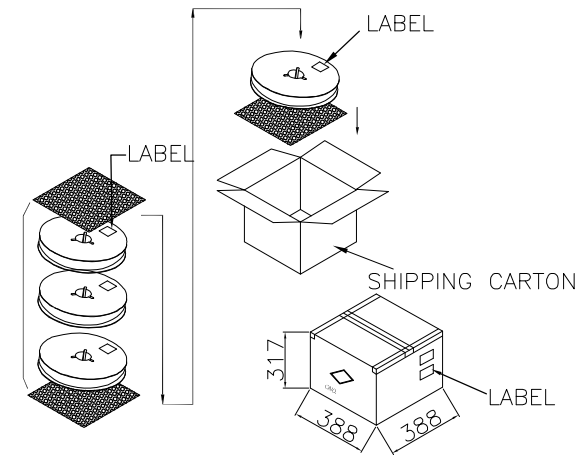
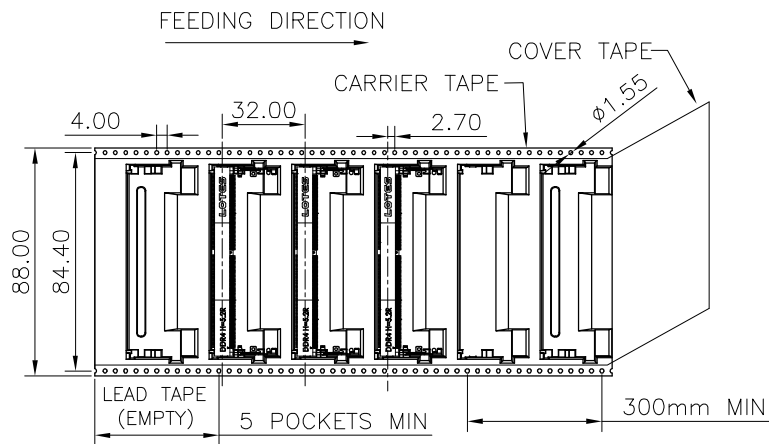
DETAIL A

GENERAL TOLERANCES UNLESS SPECIFIED		PART NO. SEE TABLE	LOTES			
X ± 0.35	X.° ± 3°					
.XX ± 0.25	.X.° ± 2°	APPROVED BY Barney	TITLE SODDR4 5.2H 260 PIN RVS TYPE			
.XXX ± 0.15	.XX.° ± 1°	CHECKED BY Vito	DWG NO. AP-ADDR0208			
SIZE A4	UNITS MM [INCH]	DRAWN BY XU		SHEET 3 / 5	SCALE 1 : 1	REV E



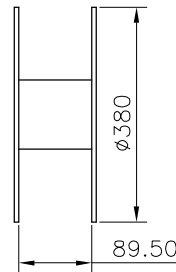
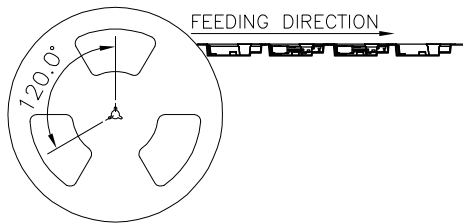
- NOTES:
1. TOLERANCE ON ALL DIMENSIONS ± 0.15 UNLESS OTHERWISE SPECIFIED;
 2. PCB THICKNESS APPLIES ACROSS TABS AND INCLUDES PLATING AND/OR METALIZATION;
 3. FINISH OF PAD: Au PLATING 30u" min OVER NI PLATING 80u" min;
 4. NO BURR;
 5. CHAMFER 0.25mm max. X 45° IF EXIST.

GENERAL TOLERANCES UNLESS SPECIFIED		PART NO. SEE TABLE	LOTES					
.X \pm 0.35	.X° \pm 3°					APPROVED BY Barney	TITLE SODDR4 5.2H 260 PIN RVS TYPE	
.XX \pm 0.25	.X° \pm 2°						CHECKED BY Vito	DWG NO. AP-ADDR0208
.XXX \pm 0.15	.XX° \pm 1°	DRAWN BY XU	SHEET SCALE REV 4 / 5 1 : 1 E					
CUSTOMER DRAWING								
SIZE A4	UNITS MM [INCH]							



NOTES:

1. MATERIAL :
 - 1.1 CARRY TAPE: PS
 - 1.2 COVER TAPE: PET
 - 1.3 SHIPPING CARTON: CORRUGATED FIBER
2. DIMENSION :
 - 2.1 REEL: W=88.0, $\phi A=380$
 - 2.2 SHIPPING CARTON: L=388, W=388, H=317 (INNER)
3. QUANTITY :
 - 3.1 PRIMARY PACKING: 300 PCS/REEL
 - 3.2 SECONDARY PACKING: 3 REELS/CARTON(900PCS)
4. PEELING RESISTANCE: 20gf~120gf.
5. PEELING SPEED: 300mm/minutes.



GENERAL TOLERANCES UNLESS SPECIFIED		PART NO. SEE TABLE	LOTES			
X \pm 0.35	X. $^{\circ}$ \pm 3 $^{\circ}$					
.XX \pm 0.25	.X. $^{\circ}$ \pm 2 $^{\circ}$	APPROVED BY Barney	TITLE SODDR4 5.2H 260 PIN RVS TYPE			
.XXX \pm 0.15	.XX. $^{\circ}$ \pm 1 $^{\circ}$	CHECKED BY Vito	DWG NO. AP-ADDR0208			
SIZE A4	UNITS MM[INCH]	DRAWN BY XU		SHEET 5 / 5	SCALE N/A	REV E

X-ON Electronics

Largest Supplier of Electrical and Electronic Components

Click to view similar products for [Standard Card Edge Connectors](#) category:

Click to view products by [LOTES](#) manufacturer:

Other Similar products are found below :

[CR7E-30DB-3.96E\(72\)](#) [6565204-6](#) [1437274-4](#) [1-582587-1](#) [284-0102-12100](#) [286-0052-12101A](#) [306022901000000](#) [A6D22DS29C2](#) [1926088-2](#) [245-062-520-350](#) [287-0032-12101](#) [306-028-525-102](#) [307-072-526-202](#) [330-030-500-278](#) [345-060-559-303](#) [534671-1](#) [341-240-317](#) [345-044-500-300](#) [346-240-318](#) [C7D10DS29C1M133](#) [395-100-524-300](#) [09-07-2032](#) [10035388-802LF](#) [10115859-011LF](#) [10122859-009LF](#) [101269333204245CLF](#) [530555-1](#) [66925-516LF](#) [5145409-2](#) [73726-0005](#) [66308-1](#) [EBC05DRXN](#) [KSLX-62-BR](#) [CE100F26-7-C](#) [CE100F28-3-D](#) [CE100F28-4-D](#) [CE156F22-9-C](#) [CT100F24-3-D](#) [CT100F24-6-C](#) [MLSS100-12-C](#) [SCC100F-11-C](#) [SCC100F-20-C](#) [SCC100F-24-C](#) [SCC100F-25-C](#) [3-530656](#) [2512250177](#) [285-0112-12300](#) [346-068-556-300](#) [284-0492-11000](#) [287-0032-12301](#)