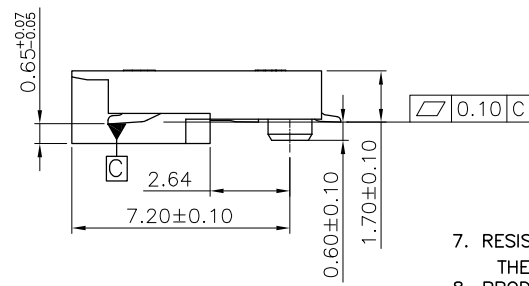
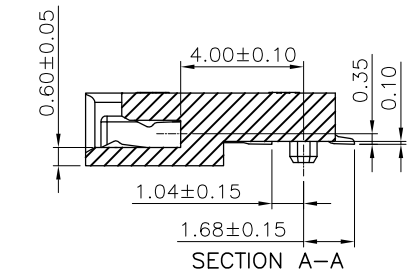
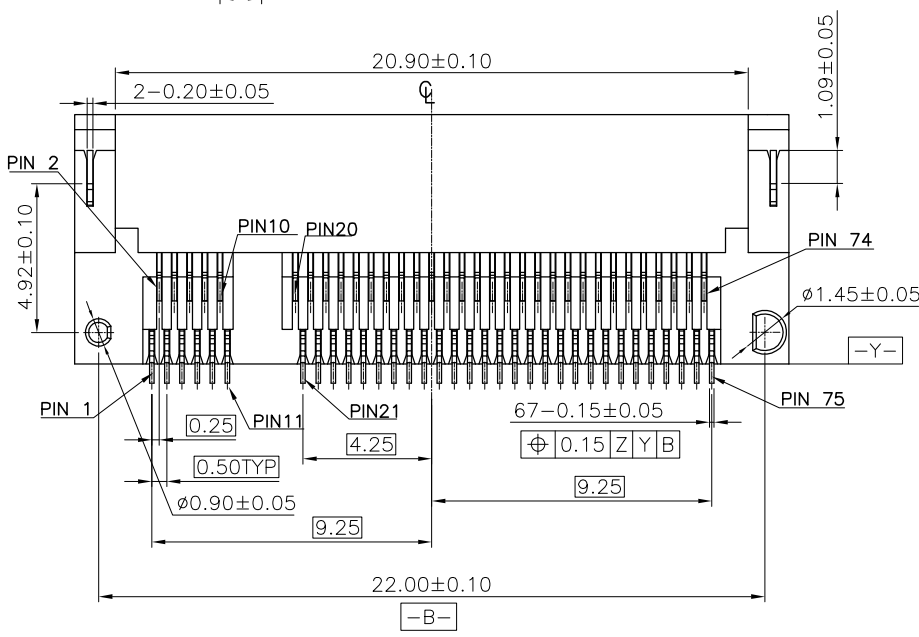
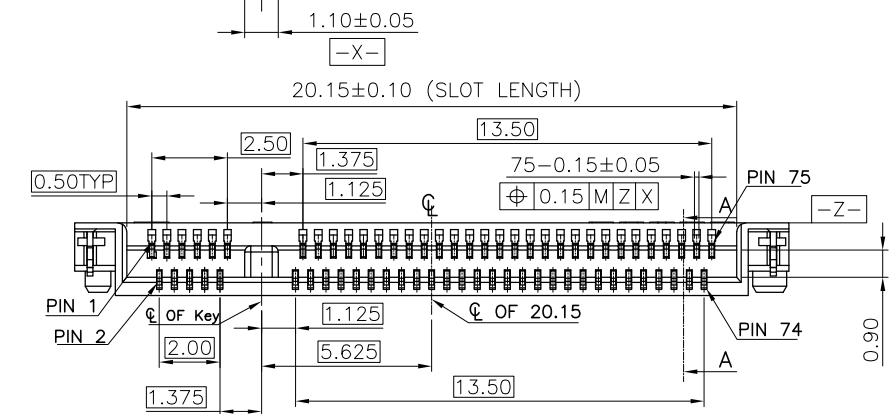
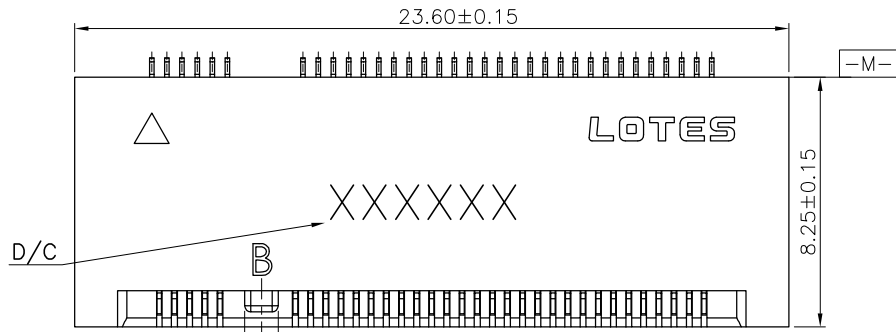
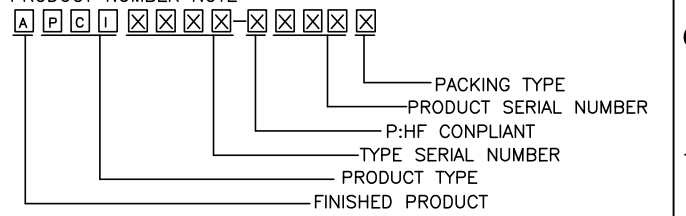


REV.	ECR/N NO./DESCRIPTION	DATE	DRAWN	CHECKED	APPROVE
1	SN15028	04/09'15	Jinjin.Tu	Vito	Barney

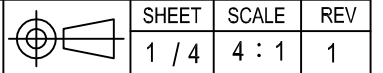


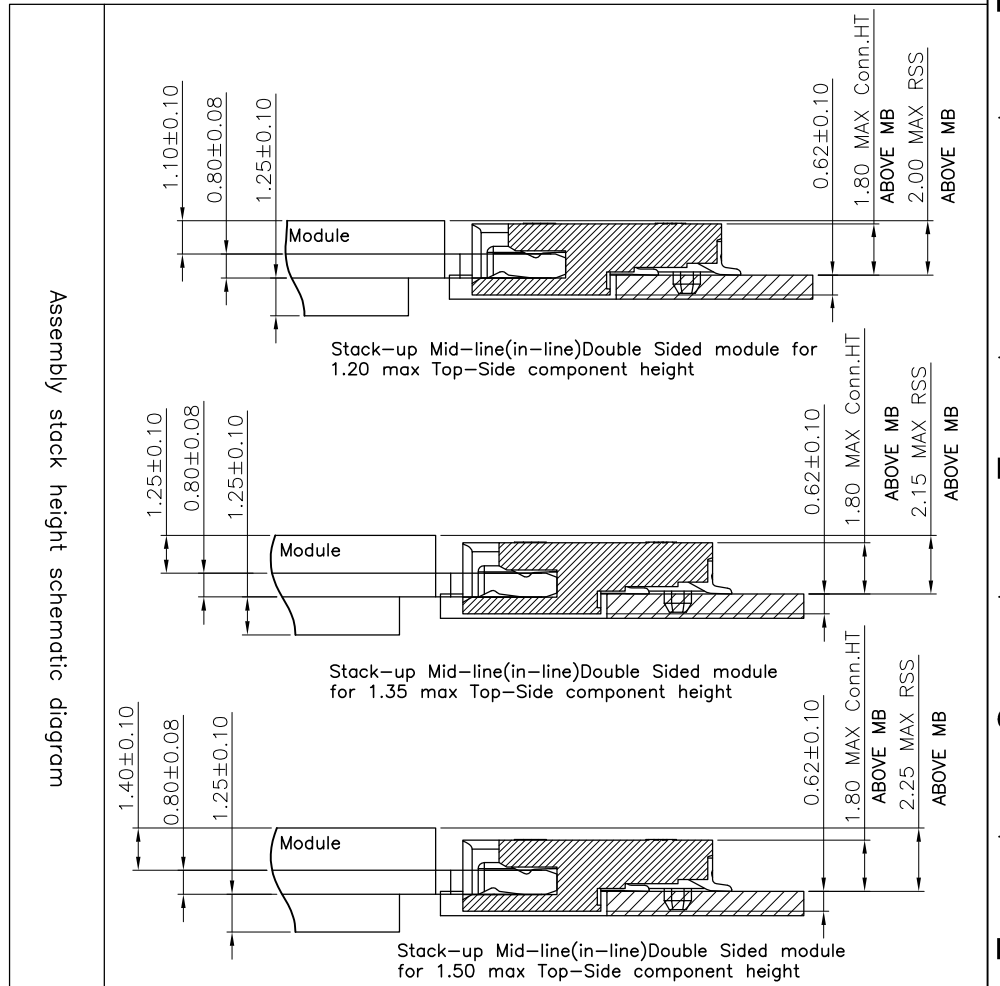
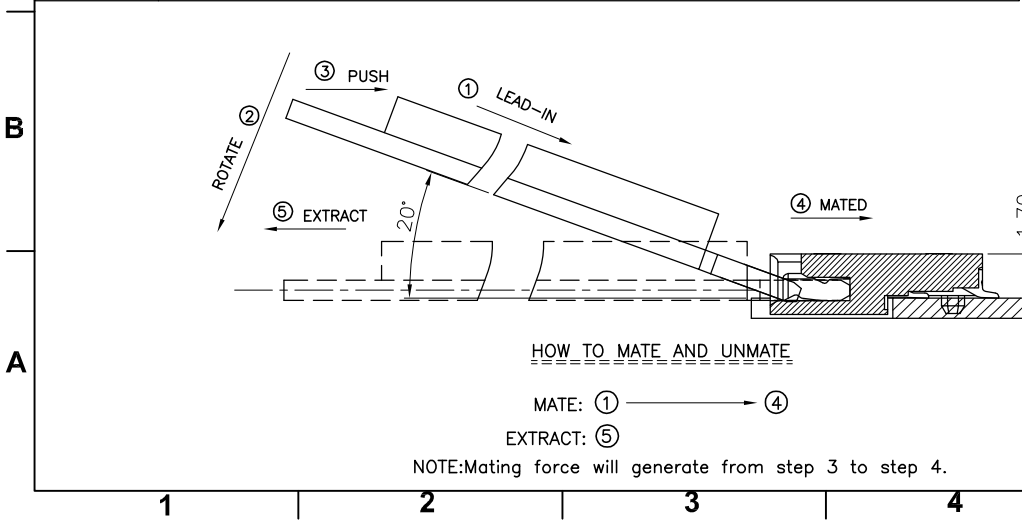
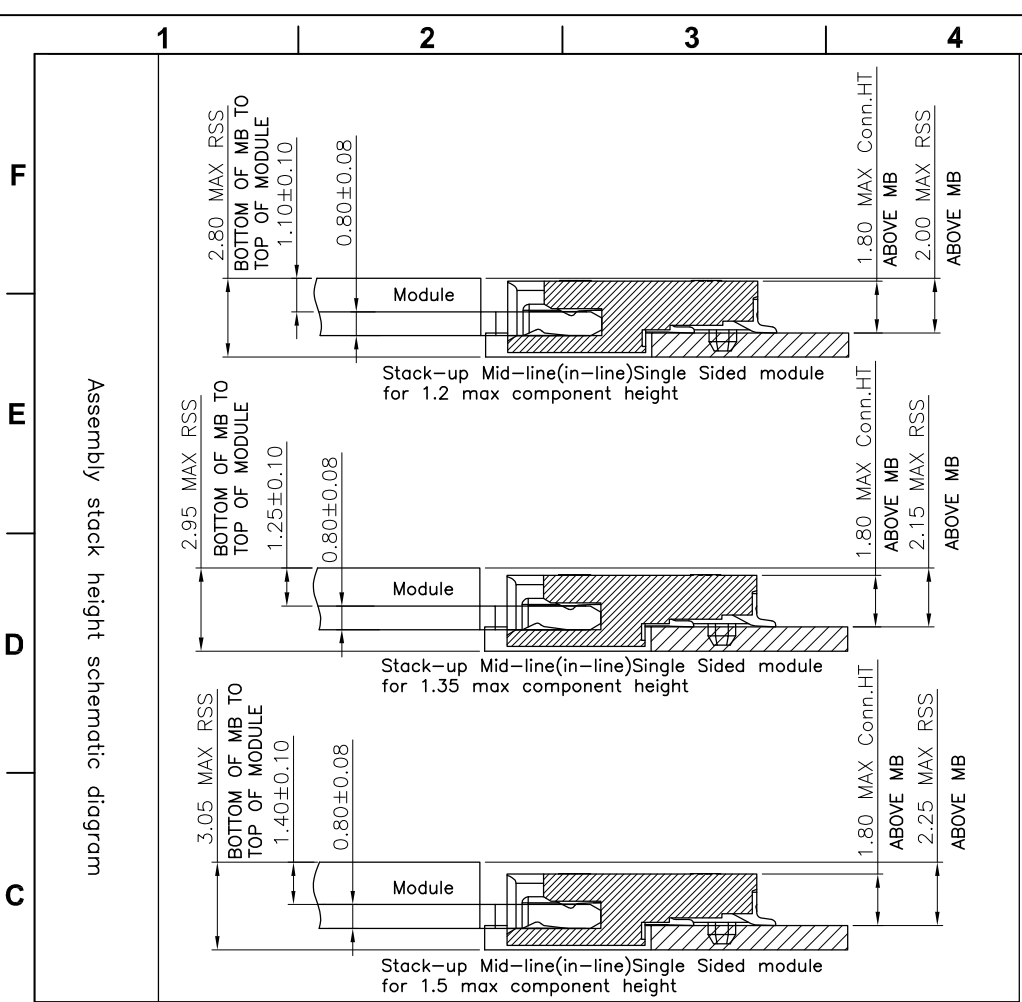
- NOTES:
- MATERIAL SPECIFICATION:
    - 1-1. HOUSING: LCP+40%GF, UL94V-0, COLOR: BLACK.
    - 1-2. CONTACT: COPPER ALLOY C1065.
    - 1-3. SMT TAB: S50C.
  - PLATING SPECIFICATION:
    - 2-1. CONTACT: 50u" MIN. NICKEL UNDER PLATING OVER ALL. G/F PLATING ON SOLDER AREA. GOLD PLATING ON CONTACT AREA: SEE TABLE
    - 2-2. SMT TAB: 50u" MIN. NICKEL UNDER PLATING OVER ALL. 80u" MIN. MATTE TIN PLATING ON SOLDER AREA.
  - HF COMPLIANT.
  - DATE CODE: XXXXXX
    - DAY
    - WEEK
    - YEAR
  - MECHANICAL PERFORMANCE:
    - 5-1. DURABILITY: 25 CYCLES.
  - ELECTRICAL PERFORMANCE:
    - 6-1. CURRENT: 0.5A PER PIN.
    - 6-2. LLCR: INITIAL 55mΩ MAX. ; FINAL ΔLLCR=20mΩ MAX..
  - RESISTANCE TO HEAT: THE TEMPERATURE SHALL BE 260±5°C MAINTAINING 10±1 SECONDS.
  - PRODUCT NUMBER NOTE



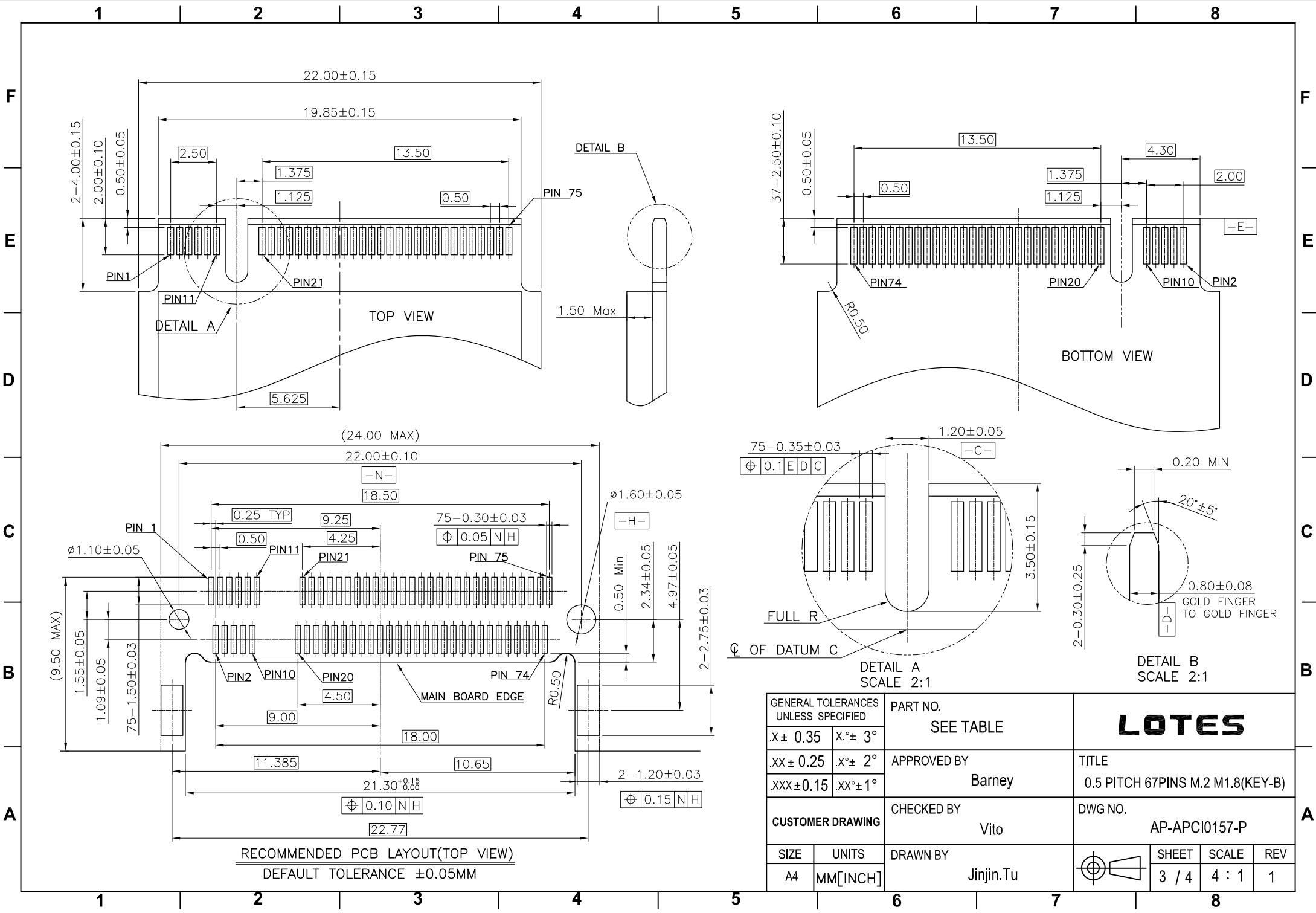
PART NO.	CONTACT PLATING	DURABILITY
APCI0157-P002A	10u" MIN. GOLD	25 CYCLES.
APCI0157-P001A	1-3u" MIN. GOLD	25 CYCLES.

GENERAL TOLERANCES UNLESS SPECIFIED		PART NO.	LOTES
.X ± 0.35	X.° ± 3°	SEE TABLE	
.XX ± 0.25	X.° ± 2°	APPROVED BY	TITLE
.XXX ± 0.15	.XX° ± 1°	Barney	0.5 PITCH 67PINS M.2 M1.8(KEY-B)
CUSTOMER DRAWING		CHECKED BY	DWG NO.
		Vito	AP-APCI0157-P
SIZE	UNITS	DRAWN BY	SHEET SCALE REV
A4	MM [INCH]	Jinjin.Tu	

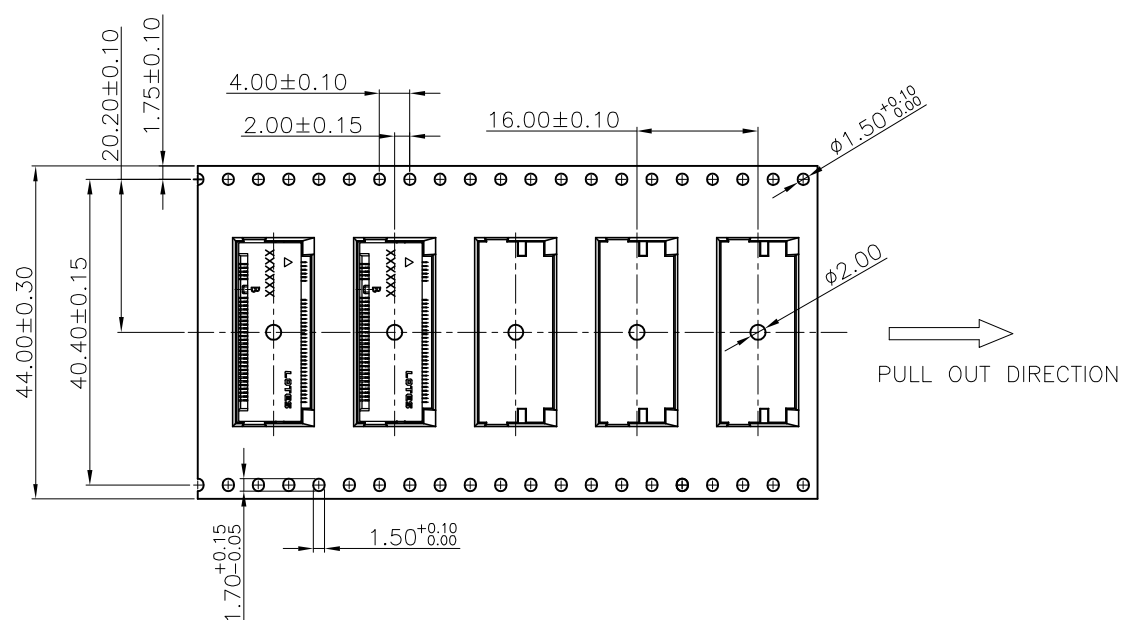
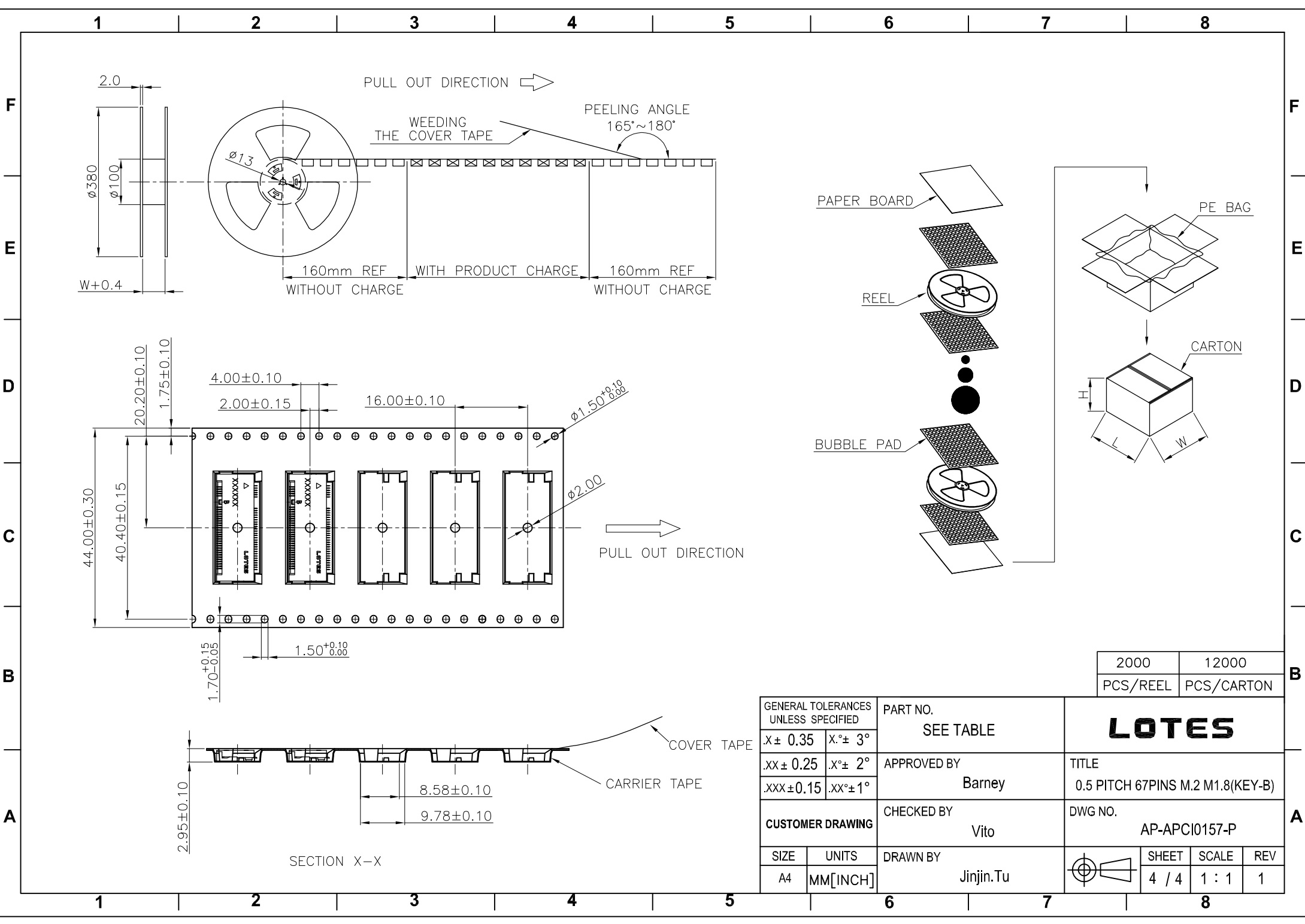




GENERAL TOLERANCES UNLESS SPECIFIED		PART NO. SEE TABLE		<b>LOTES</b>	
X ± 0.35		X.° ± 3°			
.XX ± 0.25		APPROVED BY Barney		TITLE 0.5 PITCH 67PINS M.2 M1.8(KEY-B)	
.XXX ± 0.15		.XX° ± 1°		DWG NO. AP-APCI0157-P	
CUSTOMER DRAWING		CHECKED BY Vito			
SIZE A4	UNITS MM [INCH]	DRAWN BY Jinjin.Tu			
				REV 1	



GENERAL TOLERANCES UNLESS SPECIFIED		PART NO. SEE TABLE		<b>LOTES</b>		
$X \pm 0.35$	$X.^{\circ} \pm 3^{\circ}$	APPROVED BY Barney				
$.XX \pm 0.25$	$.X.^{\circ} \pm 2^{\circ}$	CHECKED BY Vito		DWG NO. AP-APCI0157-P		
$.XXX \pm 0.15$	$.XX.^{\circ} \pm 1^{\circ}$	DRAWN BY Jinjin.Tu		SHEET 3 / 4	SCALE 4 : 1	REV 1
CUSTOMER DRAWING						



2000	12000
PCS/REEL	PCS/CARTON

GENERAL TOLERANCES UNLESS SPECIFIED		PART NO.	<b>LOTES</b>			
SEE TABLE		SEE TABLE				
.X ± 0.35	X.° ± 3°	APPROVED BY	TITLE			
.XX ± 0.25	.X.° ± 2°	Barney	0.5 PITCH 67PINS M.2 M1.8(KEY-B)			
.XXX ± 0.15	.XX.° ± 1°	CHECKED BY	DWG NO.			
CUSTOMER DRAWING		Vito	AP-APCI0157-P			
SIZE	UNITS	DRAWN BY		SHEET	SCALE	REV
A4	MM[INCH]	Jinjin.Tu		4 / 4	1 : 1	1

## X-ON Electronics

Largest Supplier of Electrical and Electronic Components

*Click to view similar products for [Standard Card Edge Connectors](#) category:*

*Click to view products by [LOTES](#) manufacturer:*

Other Similar products are found below :

[CR7E-30DB-3.96E\(72\)](#) [6565204-6](#) [1437274-4](#) [EBT15622B2X](#) [1-582587-1](#) [284-0102-12100](#) [286-0052-12101A](#) [306022901000000](#) [307-012-502-202](#) [307-056-520-300](#) [A6D22DS29C2](#) [1926088-2](#) [287-0032-12101](#) [345-060-559-303](#) [392-008-559-201](#) [534671-1](#) [341-240-317](#) [345-044-500-300](#) [346-240-318](#) [387-012-523-300](#) [395-100-524-300](#) [09-07-2032](#) [10035388-802LF](#) [10115859-011LF](#) [10122859-009LF](#) [101269333204245CLF](#) [530555-1](#) [66925-516LF](#) [5145409-2](#) [73726-0005](#) [66308-1](#) [5036A30](#) [PEC-07-02-T-S-A](#) [346-014-520-801](#) [KSLX-62-BR](#) [307-048-502-202](#) [CE100F26-7-C](#) [CE100F28-3-D](#) [CE100F28-4-D](#) [CE156F18-9-C](#) [CE156F22-5-D](#) [CE156F22-9-C](#) [CT100F22-2-D](#) [CT100F22-3-D](#) [CT100F24-2-D](#) [CT100F24-3-D](#) [CT100F24-6-C](#) [CT156F22-4-D](#) [MLSS100-12-C](#) [MLSS100-16-C](#)