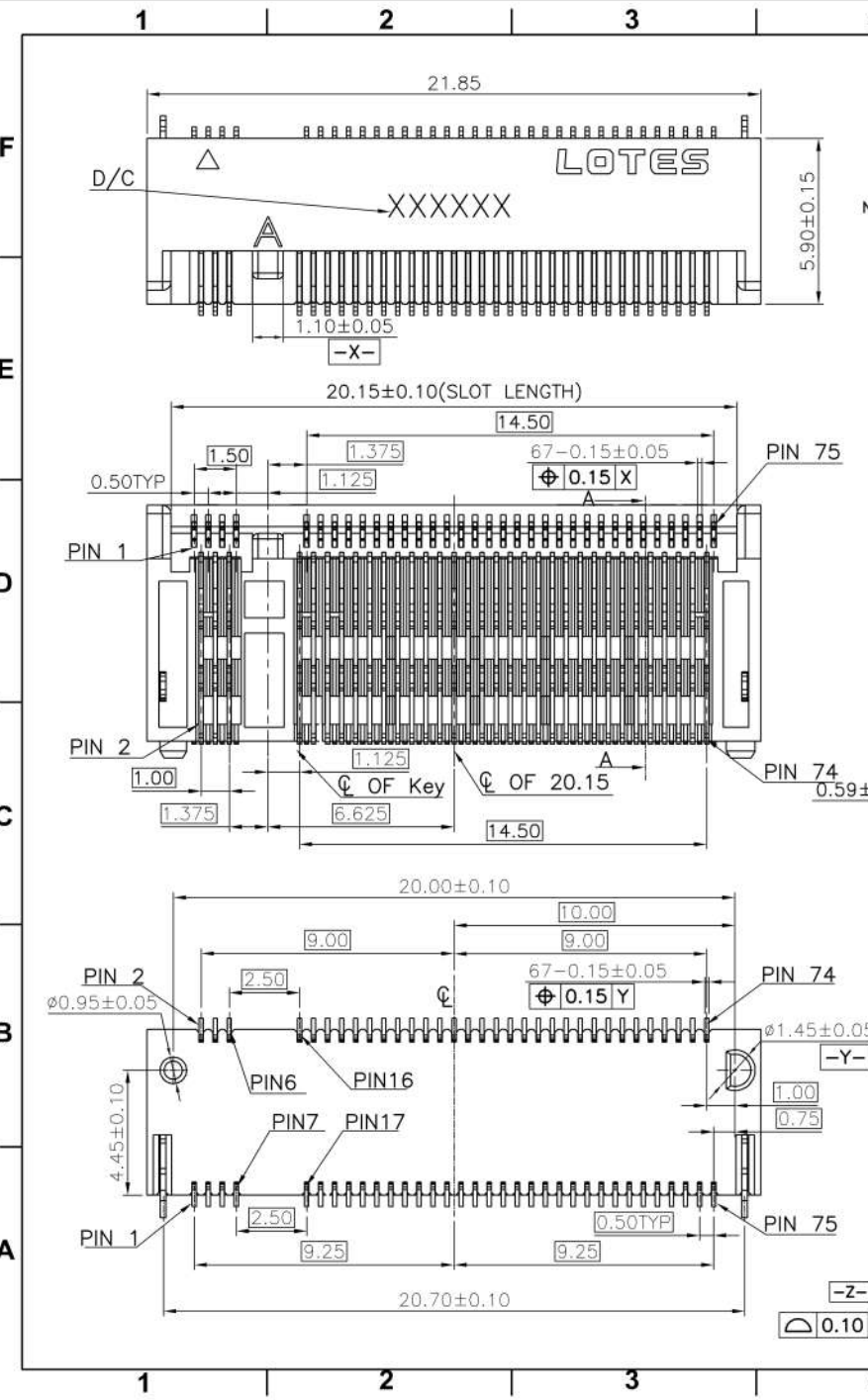


REV.	ECR/N NO./DESCRIPTION	DATE	DRAWN	CHECKED	APPROVE
1	SN14190	01/04'15	Sam	Vito	Barney
1A	SN17***	08/23'17	Jingyan.Zhao	Vito	Ford



NOTES:

- MATERIAL SPECIFICATION:
  - 1-1. HOUSING: LCP+40%GF,UL-94V0,BLACK.
  - 1-2. CONTACT:COPPER ALLOY.
  - 1-3. SMT TAB: S50C.
- PLATING SPECIFICATION:
  - 2-1. CONTACT:
    - 50u" MIN.NICKEL UNDER PLATING OVER ALL.
    - G/F" PLATING ON SOLDER AREA.
    - GOLD PLATING ON CONTACT AREA SEE TABLE.
  - 2-2. SMT TAB:
    - 50u" MIN. NICKEL UNDER PLATING OVER ALL .
    - 80u" MIN. MATTE TIN PLATING ON SOLDER AREA.

3. HF COMPLIANT, ROHS COMPLIANT.

4. DATE CODE: XXXXXX



5. MECHANICAL PERFORMANCE:
 

- 5-1. DURABILITY: SEE TABLE

6. ELECTRICAL PERFORMANCE:

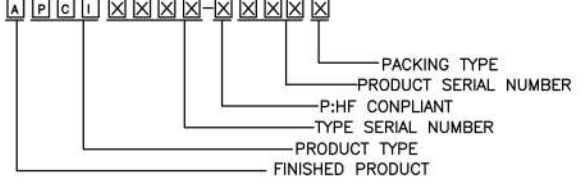
6-1. CURRENT: 0.5A PER PIN.

6-2. LLCR: INITIAL 55mΩ MAX. ; FINAL ΔLLCR=20mΩ MAX..

7. IR REFLOW:

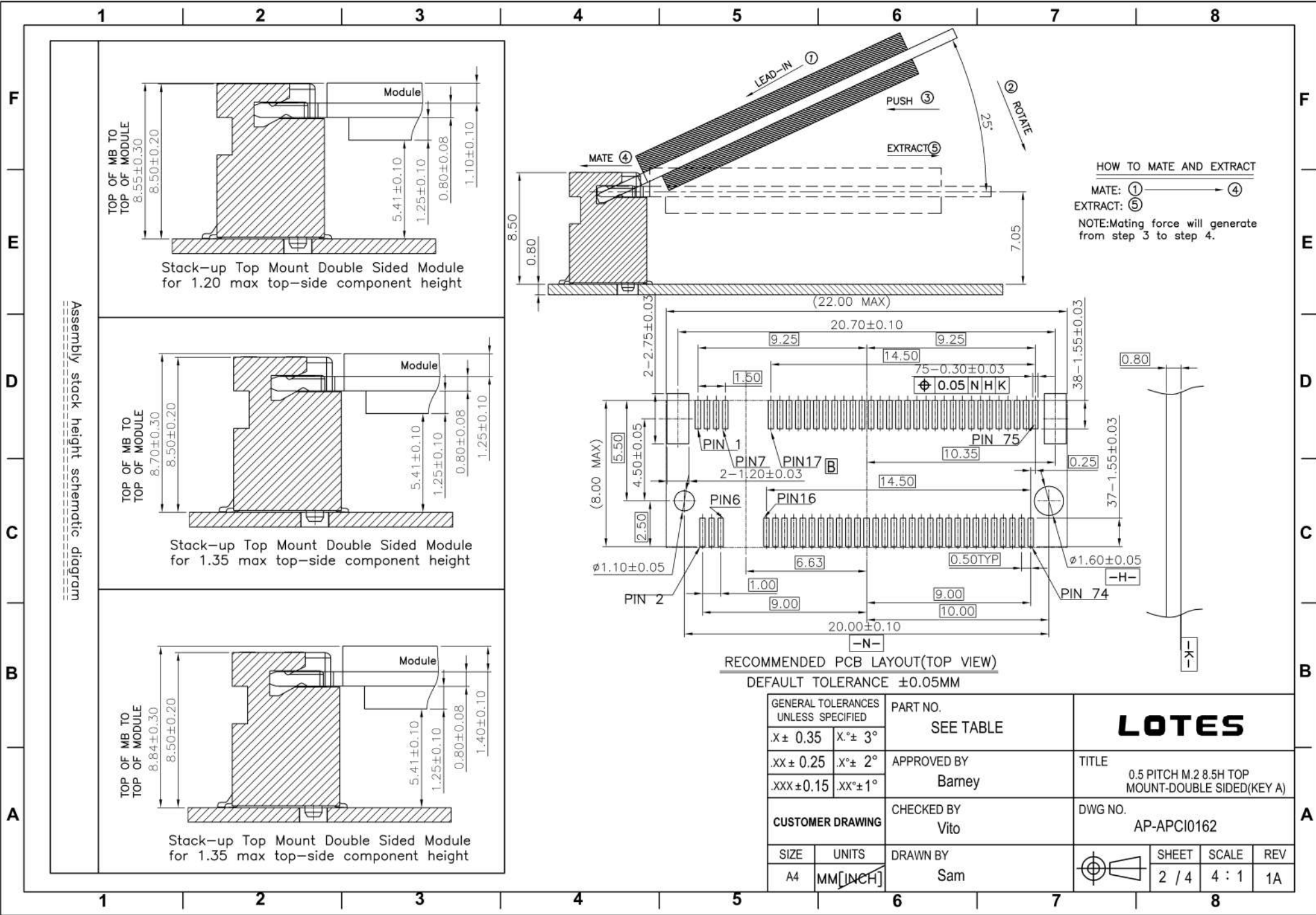
THE TEMPERATURE SHALL BE 260±5°C MAINTAINING 10±1 SECONDS.

PRODUCT NUMBER NOTE

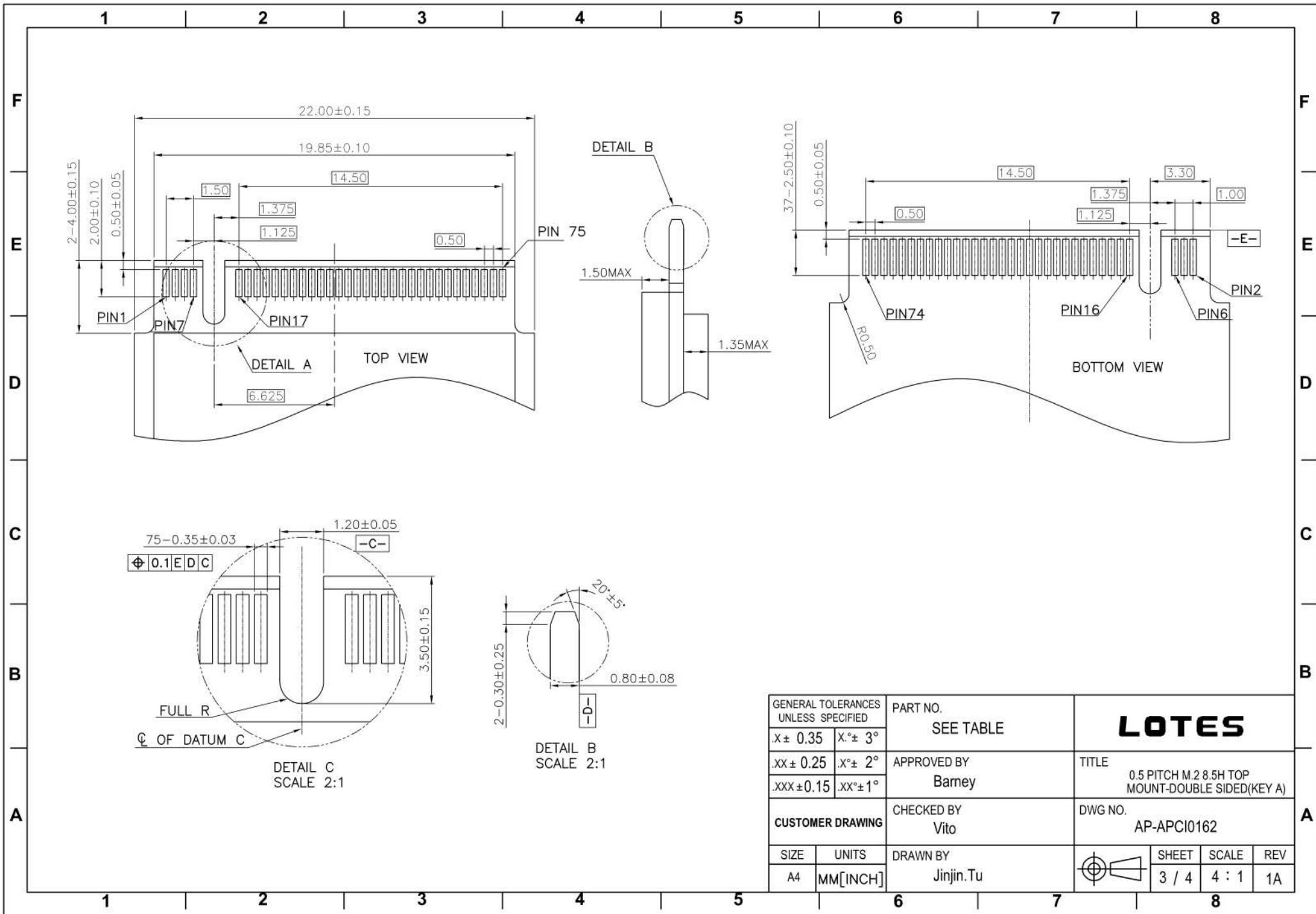


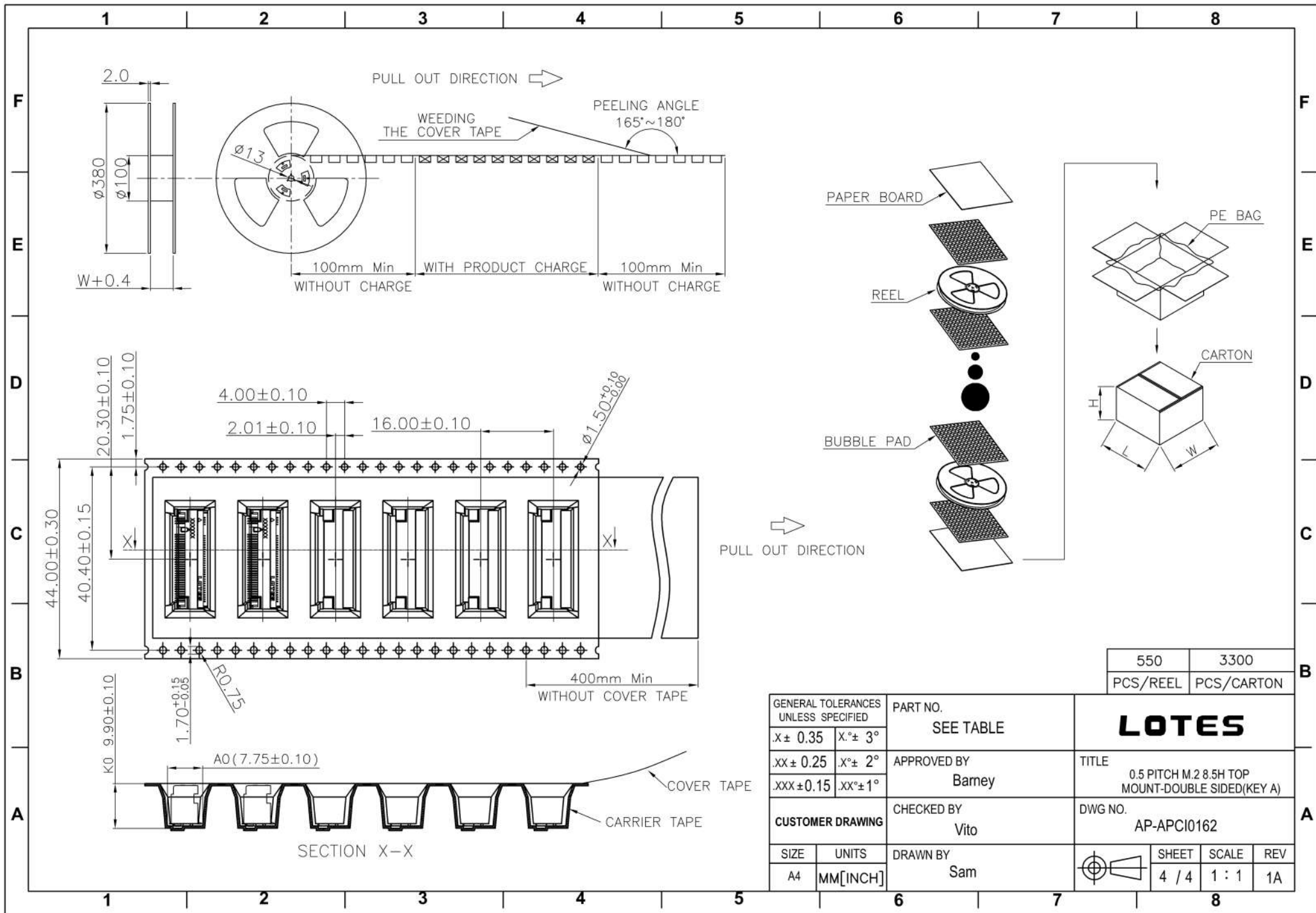
KEY NO.	PART NO.	CONTACT PLATING	DURABILITY
A-KEY	APCI0162-P004A	30u' MIN. GOLD	60 CYCLES
	APCI0162-P003A	15u' MIN. GOLD	25 CYCLES
	APCI0162-P002A	10u' MIN. GOLD	25 CYCLES
	APCI0162-P001A	1u' MIN. GOLD	25 CYCLES

GENERAL TOLERANCES UNLESS SPECIFIED		PART NO.	LOTES		
X ± 0.35	X ° ± 3°	SEE TABLE	TITLE 0.5 PITCH M.2 8.5H TOP MOUNT-DOUBLE SIDED(KEY A)		
.XX ± 0.25	.X ° ± 2°	APPROVED BY Barney			
.XXX ± 0.15	.XX ° ± 1°	CHECKED BY Vito	DWG NO. AP-APCI0162		
CUSTOMER DRAWING		DRAWN BY Sam	SHEET 1 / 4		
SIZE A4	UNITS MM [INCH]	SCALE 4 : 1		REV 1A	



GENERAL TOLERANCES UNLESS SPECIFIED		PART NO. SEE TABLE	<b>LOTES</b>			
X± 0.35	X.°± 3°					
.XX± 0.25	X.°± 2°		APPROVED BY Barney	TITLE 0.5 PITCH M.2 8.5H TOP MOUNT-DOUBLE SIDED(KEY A)		
.XXX± 0.15	.XX°± 1°	CHECKED BY Vito	DWG NO. AP-APCI0162			
SIZE A4	UNITS MM[INCH]	DRAWN BY Sam		SHEET 2 / 4	SCALE 4 : 1	REV 1A





550	3300
PCS/REEL	PCS/CARTON

GENERAL TOLERANCES UNLESS SPECIFIED		PART NO. SEE TABLE	<b>LOTES</b>				
$X \pm 0.35$	$X^\circ \pm 3^\circ$					TITLE 0.5 PITCH M.2 8.5H TOP MOUNT-DOUBLE SIDED(KEY A)	
$.XX \pm 0.25$	$X^\circ \pm 2^\circ$		APPROVED BY Barney				
$.XXX \pm 0.15$	$.XX^\circ \pm 1^\circ$	CHECKED BY Vito			DWG NO. AP-APCI0162		
CUSTOMER DRAWING		DRAWN BY Sam			SHEET 4 / 4		
SIZE A4	UNITS MM[INCH]	SCALE 1 : 1			REV 1A		

## X-ON Electronics

Largest Supplier of Electrical and Electronic Components

*Click to view similar products for [Standard Card Edge Connectors](#) category:*

*Click to view products by [LOTES](#) manufacturer:*

Other Similar products are found below :

[CR7E-30DB-3.96E\(72\)](#) [6565204-6](#) [1437274-4](#) [EBT15622B2X](#) [1-582587-1](#) [284-0102-12100](#) [286-0052-12101A](#) [306022901000000](#) [307-012-502-202](#) [307-056-520-300](#) [A6D22DS29C2](#) [1926088-2](#) [287-0032-12101](#) [345-060-559-303](#) [392-008-559-201](#) [534671-1](#) [341-240-317](#) [345-044-500-300](#) [346-240-318](#) [387-012-523-300](#) [395-100-524-300](#) [09-07-2032](#) [10035388-802LF](#) [10115859-011LF](#) [10122859-009LF](#) [101269333204245CLF](#) [530555-1](#) [66925-516LF](#) [5145409-2](#) [73726-0005](#) [66308-1](#) [5036A30](#) [PEC-07-02-T-S-A](#) [346-014-520-801](#) [KSLX-62-BR](#) [307-048-502-202](#) [CE100F26-7-C](#) [CE100F28-3-D](#) [CE100F28-4-D](#) [CE156F18-9-C](#) [CE156F22-5-D](#) [CE156F22-9-C](#) [CT100F22-2-D](#) [CT100F22-3-D](#) [CT100F24-2-D](#) [CT100F24-3-D](#) [CT100F24-6-C](#) [CT156F22-4-D](#) [MLSS100-12-C](#) [MLSS100-16-C](#)