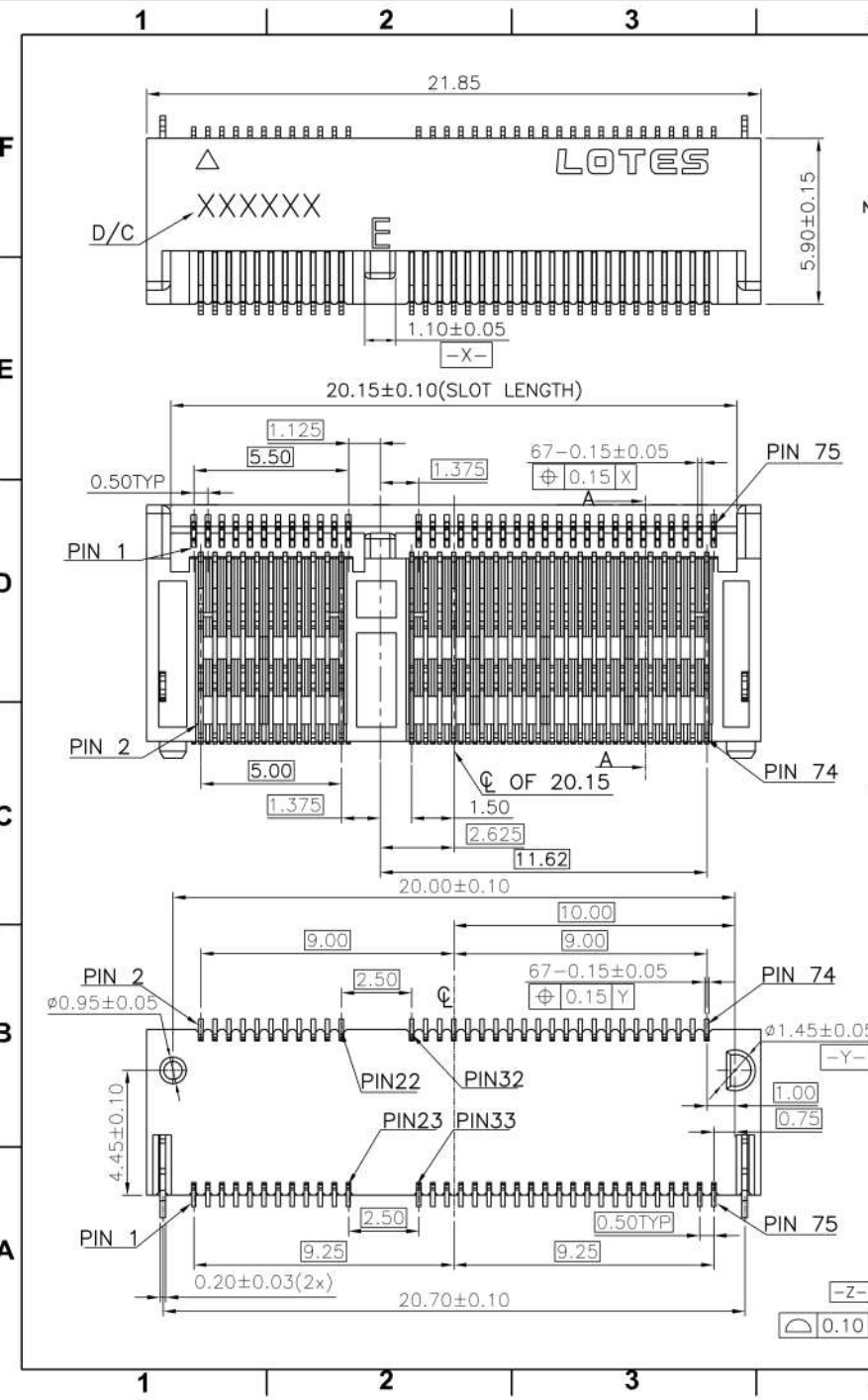


REV.	ECR/N NO./DESCRIPTION	DATE	DRAWN	CHECKED	APPROVE
1	SN14190	01/04'15	Sam	Vito	Barney

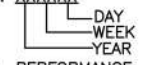


NOTES:

- MATERIAL SPECIFICATION:
 - HOUSING: LCP+40%GF,UL-94V0,BLACK.
 - CONTACT:COPPER ALLOY C1065.
 - SMT TAB: S50C.
- PLATING SPECIFICATION:
 - CONTACT:
 - 50u" MIN.NICKEL UNDER PLATING OVER ALL.
 - GOLD PLATING ON SOLDER TAIL AREA
 - GOLD PLATING ON CONTACT AREA SEE TABLE.
 - SMT TAB:
 - 50u" MIN. NICKEL UNDER PLATING OVER ALL .
 - 80u" MIN. MATTE TIN PLATING ON SOLDER AREA.

3. HF COMPLIANT, ROHS COMPLIANT.

4. DATE CODE: XXXXXX



5. MECHANICAL PERFORMANCE:
5-1. DURABILITY: SEE TABLE

6. ELECTRICAL PERFORMANCE:

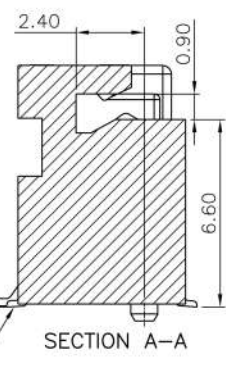
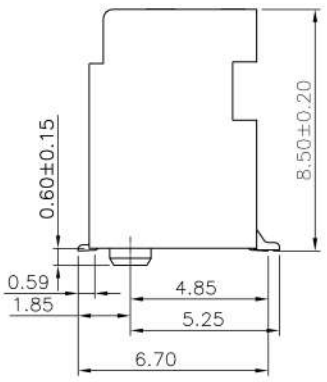
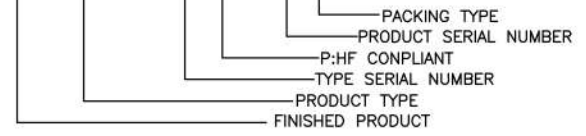
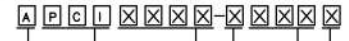
6-1. CURRENT: 0.5A PER PIN.

6-2. LLCR: INITIAL 55mΩ MAX. ; FINAL ΔLLCR=20mΩ MAX..

7. IR REFLOW:

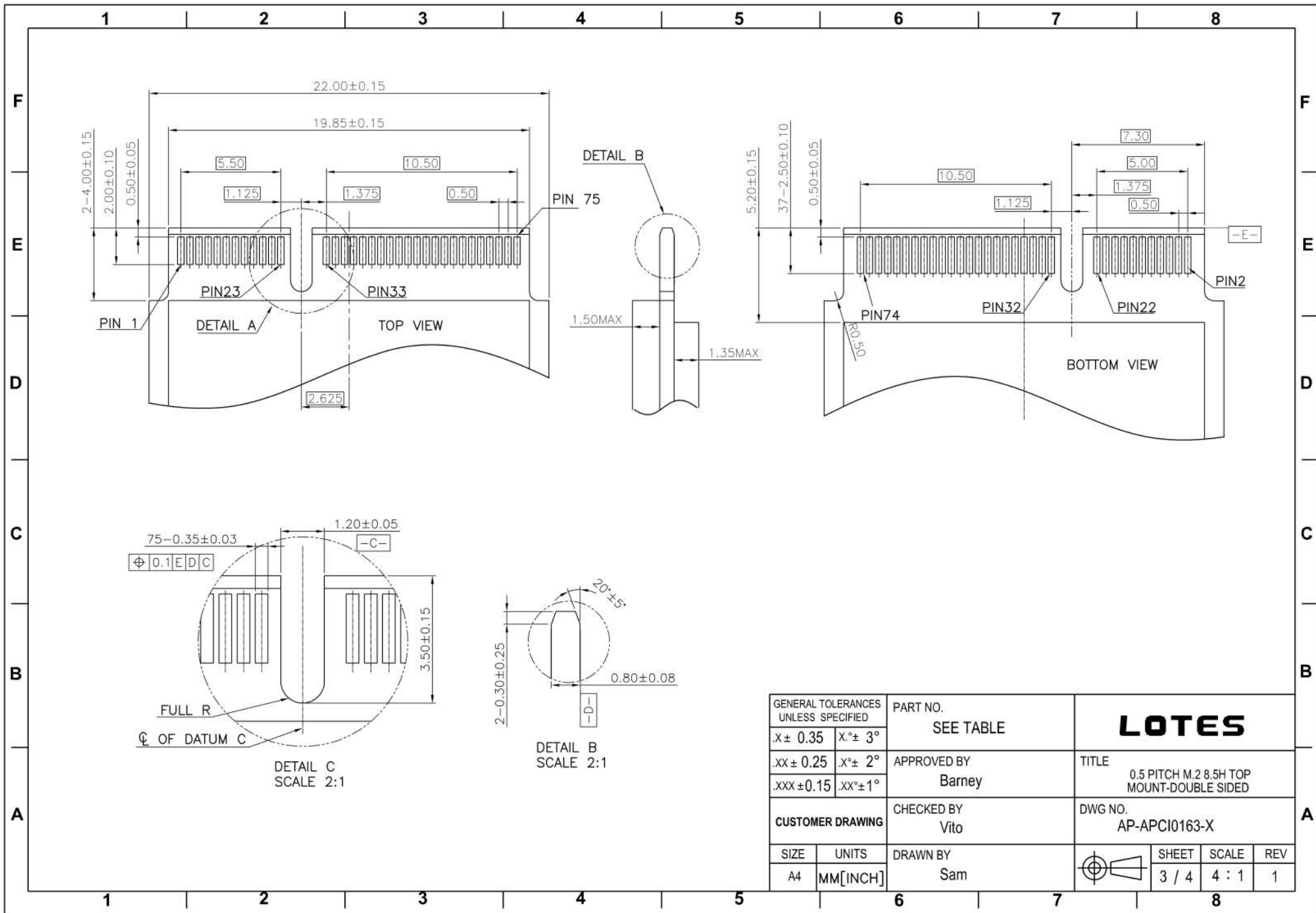
THE TEMPERATURE SHALL BE 260±5°C MAINTAINING 10±1 SECONDS.

PRODUCT NUMBER NOTE

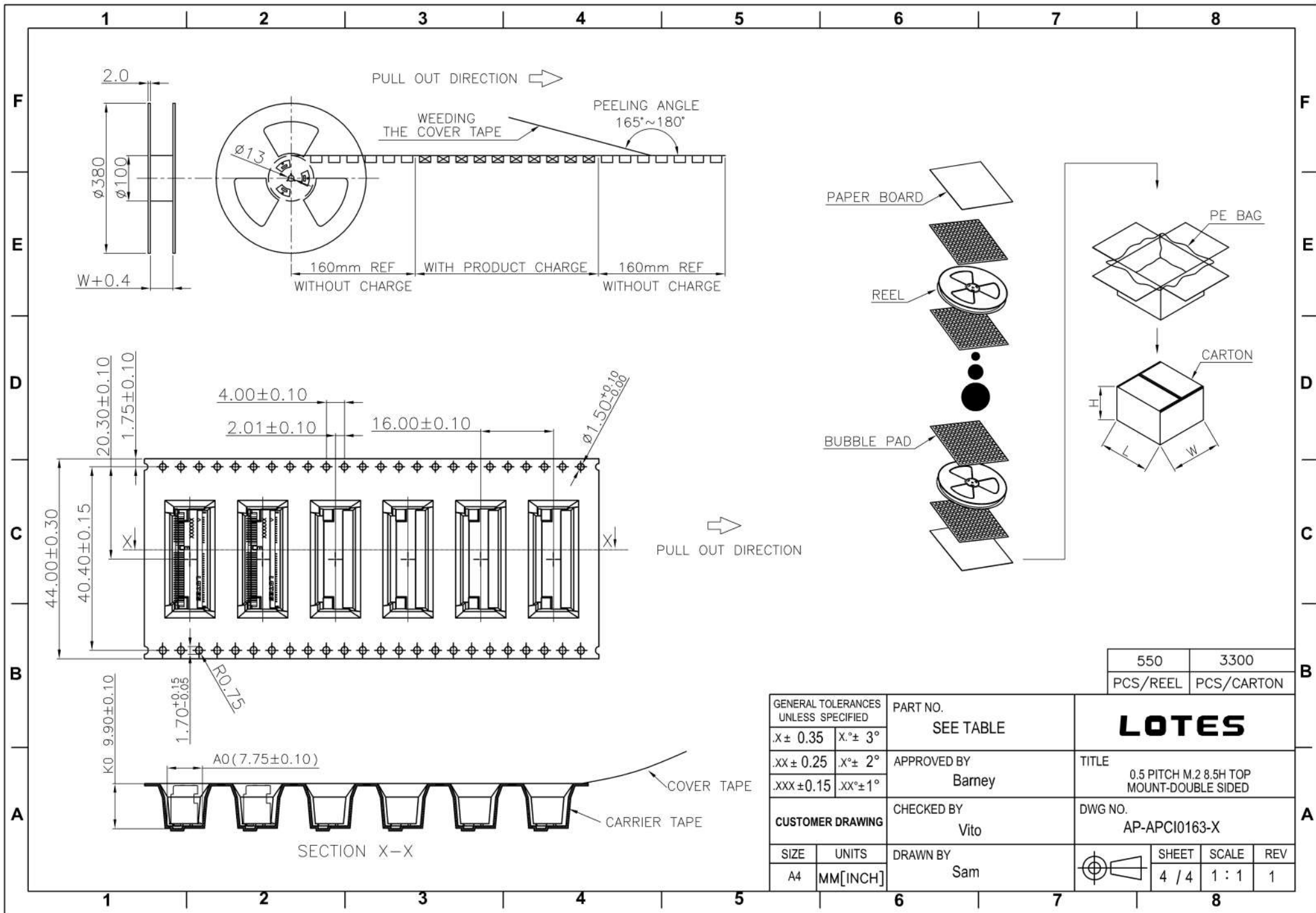


E-KEY	APCI0163-P004A	Au 30u. GOLD	60 CYCLES
E-KEY	APCI0163-P003A	Au 15u. GOLD	25 CYCLES
E-KEY	APCI0163-P002A	Au 10u. GOLD	25 CYCLES
E-KEY	APCI0163-P001A	G/F MIN. GOLD	25 CYCLES
KEY NO.	PART NO.	CONTACT PLATING	DURABILITY

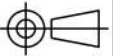
GENERAL TOLERANCES UNLESS SPECIFIED		PART NO. SEE TABLE		LOTES			
X ± 0.35	X ° ± 3°	APPROVED BY Barney					
.XX ± 0.25	.X ° ± 2°	CHECKED BY Vito		DWG NO. AP-APCI0163-X			
.XXX ± 0.15	.XX ° ± 1°	CUSTOMER DRAWING		SHEET 1 / 4			
SIZE A4	UNITS MM [INCH]	DRAWN BY Sam		SCALE 4 : 1		REV 1	



GENERAL TOLERANCES UNLESS SPECIFIED		PART NO. SEE TABLE	LOTES		
X ± 0.35	X° ± 3°				
.XX ± 0.25	X° ± 2°		CHECKED BY Vito	DWG NO. AP-APCI0163-X	
.XXX ± 0.15	.XX° ± 1°	CUSTOMER DRAWING	APPROVED BY Barney		
SIZE A4	UNITS MM[INCH]	DRAWN BY Sam	SHEET 3 / 4		
			SCALE 4 : 1		
			REV 1		



550	3300
PCS/REEL	PCS/CARTON

GENERAL TOLERANCES UNLESS SPECIFIED		PART NO. SEE TABLE	LOTES			
$.X \pm 0.35$	$X^\circ \pm 3^\circ$					APPROVED BY Barney
$.XX \pm 0.25$	$X^\circ \pm 2^\circ$		CHECKED BY Vito	DWG NO. AP-APCI0163-X		
$.XXX \pm 0.15$	$.XX^\circ \pm 1^\circ$	CUSTOMER DRAWING	DRAWN BY Sam			
SIZE A4	UNITS MM[INCH]			SHEET 4 / 4	SCALE 1 : 1	REV 1

X-ON Electronics

Largest Supplier of Electrical and Electronic Components

Click to view similar products for [Standard Card Edge Connectors](#) category:

Click to view products by [LOTES](#) manufacturer:

Other Similar products are found below :

[CR7E-30DB-3.96E\(72\)](#) [6565204-6](#) [1437274-4](#) [EBT15622B2X](#) [1-582587-1](#) [284-0102-12100](#) [286-0052-12101A](#) [306022901000000](#) [307-012-502-202](#) [307-056-520-300](#) [A6D22DS29C2](#) [1926088-2](#) [287-0032-12101](#) [345-060-559-303](#) [392-008-559-201](#) [534671-1](#) [341-240-317](#) [345-044-500-300](#) [346-240-318](#) [387-012-523-300](#) [395-100-524-300](#) [09-07-2032](#) [10035388-802LF](#) [10115859-011LF](#) [10122859-009LF](#) [101269333204245CLF](#) [530555-1](#) [66925-516LF](#) [5145409-2](#) [73726-0005](#) [66308-1](#) [5036A30](#) [PEC-07-02-T-S-A](#) [346-014-520-801](#) [KSLX-62-BR](#) [307-048-502-202](#) [CE100F26-7-C](#) [CE100F28-3-D](#) [CE100F28-4-D](#) [CE156F18-9-C](#) [CE156F22-5-D](#) [CE156F22-9-C](#) [CT100F22-2-D](#) [CT100F22-3-D](#) [CT100F24-2-D](#) [CT100F24-3-D](#) [CT100F24-6-C](#) [CT156F22-4-D](#) [MLSS100-12-C](#) [MLSS100-16-C](#)