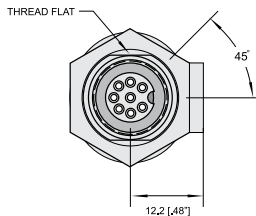
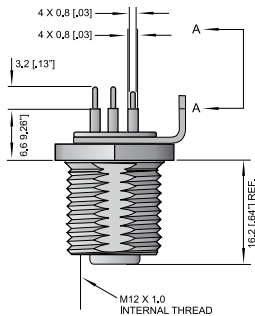


Be Certain with Belden



EtherMATE™ Industrial Ethernet PCB Receptacle

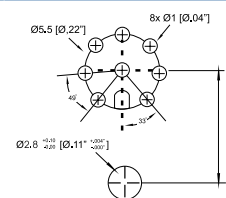
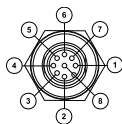


Type	0986 EFC 100
Product description	Receptacle connector, M12 female connector, 8-pole, PCB contacts with board lock.
Environmental	
Degree of protection	IP 67 / NEMA 6P
Operating temperature range	-25°C (-13°F) / +90°C (+194°F)
Mechanical	
Housing / Molded body	CuZn, nickel-plated
Pins	8
Insert	PUR, black
Contacts	CuZn, gold over nickel plated
O-ring	Viton
Board lock	Phosphor bronze, tin-lead plated
Electrical	
Current rating	4 A
Voltage rating	250 V

The application of these products in harsh environments should always be checked before use. Specifications subject to alteration.

Pin assignment	Recommended PCB pattern
-----------------------	--------------------------------

M12, Female 8-poles



Part number	Order number
0986 EFC 100	90000510



X-ON Electronics

Largest Supplier of Electrical and Electronic Components

Click to view similar products for [Circular Metric Connectors](#) category:

Click to view products by [Lumberg](#) manufacturer:

Other Similar products are found below :

[600X518037X](#) [6STD15PCR99B70A](#) [8R4000A16M020](#) [8R5000A16M005](#) [1200910002](#) [1203580030](#) [1200910008](#) [1200910011](#) [1300140094](#)
[130203-0054](#) [1300140026](#) [1300150099](#) [RF-12S1N8A90DU](#) [1-3637-600-5205](#) [1612618](#) [21036836414](#) [8R4006A16M010](#) [8R5006A18A120](#)
[1604232](#) [1R3006A20M005](#) [RF-12P1N8A80DU](#) [RF-12P1N8A90DU](#) [41-40011](#) [42-01015](#) [4-22279-4](#) [4-22281-1](#) [4-22284-9](#) [43-00113](#) [43-](#)
[01088](#) [43-01203](#) [41-40013](#) [42-00008](#) [43-00343](#) [43-01032](#) [43-01162](#) [43-10000](#) [600X518050X](#) [SACC-DSI-FS-5P-PG9-L180 SC](#)
[8R5006A16M020](#) [8R5006A16M005](#) [8R4000A16M010](#) [6-22279-3](#) [1605332](#) [N03FA03144](#) [1300140077](#) [43-01338](#) [XS2RD4265](#) [RSC 4/9](#)
[XS2R-D426-1](#) [XS8A-0441](#)