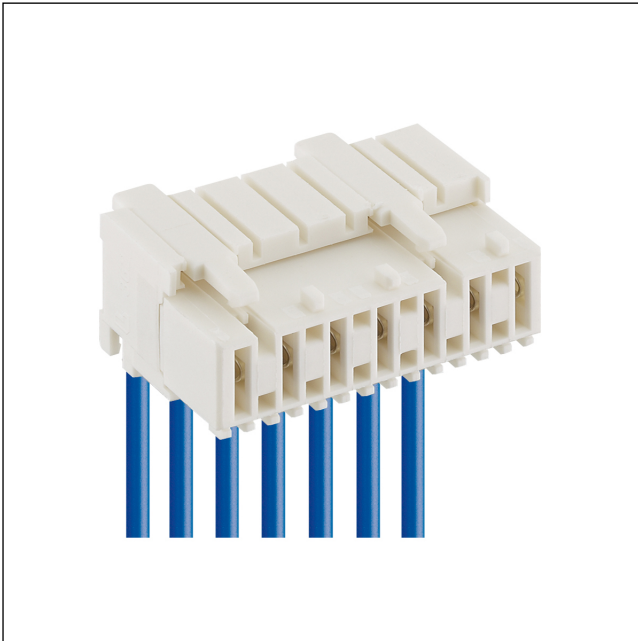


36

3623

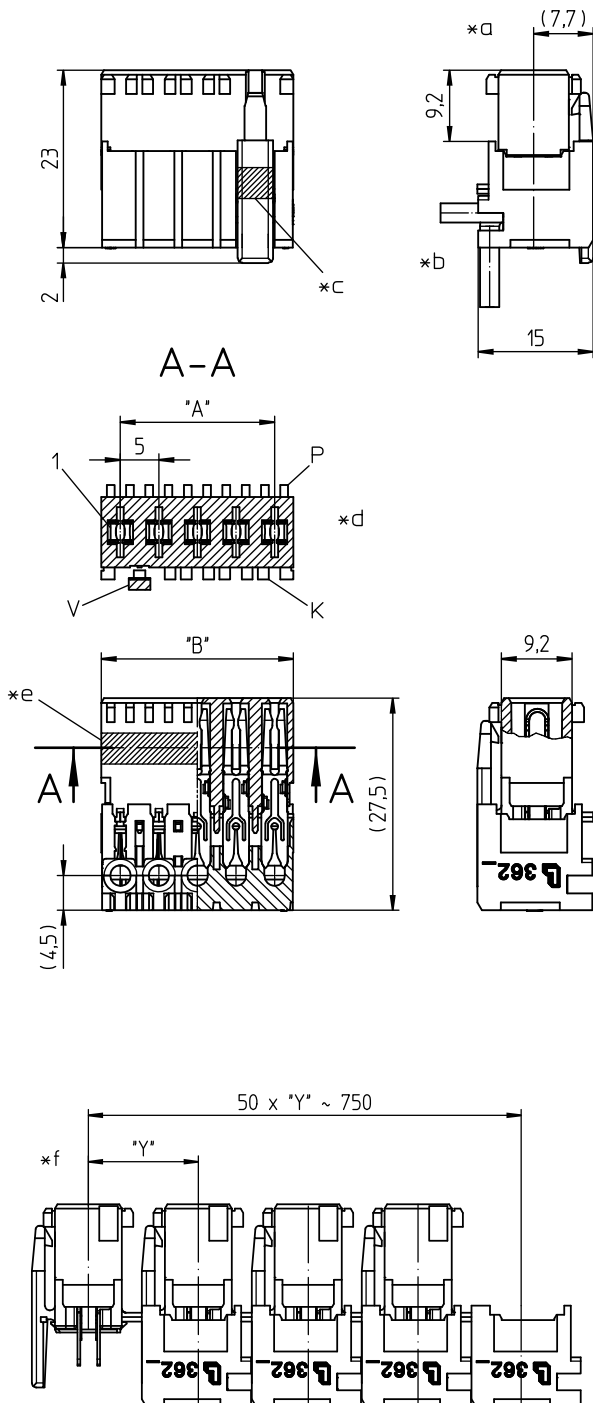
RAST 5 connectors, pitch 5.0 mm



RAST 5 connector for indirect mating, insulation displacement technology (IDT), with exterior lock, consecutive placement without loss of pitch

Approvals:





Environmental conditions

Temperature range	-40 °C/+125 °C – 3623 (S...)
	-40 °C/+130 °C – 3623 M08(S...)
	-40 °C/+130 °C – 3623 M20(S...) ¹

¹ upper limit temperature (insulating body) RTI (electrical) of the UL Yellow Card

Materials


Insulating body	PA, V-2 according to UL94 – 3623 (S...)
	PA, V-2 according to UL94 – 3623 M08(S...)
	PA, V-0 according to UL94 – 3623 M20(S...) ¹

Contact spring	CuSn, tin-plated
----------------	------------------


¹ M08: component glow wire resistant (GWT 750 °C), testing acc. to IEC 60695-2-11, assessment acc. to IEC 60335-1 (flame < 2 s)

M20: material halogen-free, GWFI 960 °C (0.75 mm), GWIT 775 °C (0.75 mm)

Mechanical data

Mating with	tab contact 6.3 mm x 0.8 mm according to DIN 46244
Insertion force/contact	≤ 4,0 N
Withdrawal force/contact	≥ 1,0 N
Keying proposals	at www.lumberg.com 

Connectable conductors for IDT area

Construction	discrete conductor, notched flat cable 5.0 mm
Section min.	0,22 mm ²
Section max.	1 mm ²
Insulation diameter	≤ 2,5 mm
Approved cables	at www.lumberg.com 

Electrical data (at T_{amb} 20 °C)

Contact resistance	≤ 5 mΩ
Rated current	10 A (0,75 mm ² , T _{amb} 70 °C) – 3623 (M...)
	5 A (0,38 mm ² , T _{amb} 70 °C) – 3623 (M...S01)
Rated voltage	250 V AC
Material group	I (IEC)/0 (UL) (CTI ≥ 600) – 3623 (S...)
	IIIa (IEC)/2 (UL) (CTI ≥ 250) – 3623 M08(S...)
	I (IEC)/2 (UL) (CTI ≥ 600) – 3623 M20(S...)
Creepage distance	3,4 mm
Clearance	3,4 mm
Insulation resistance	> 10 GΩ

- *a terminated connector
- *b cable departure 90° or 180°
- *c color keying option (FB) according to customer's specification
- *d K = keying
P = positioning
V = lock
- *e color marking blue at 3623 (M...)S01
- *f chaining of the component parts (state of delivery)

Associated products

Counterparts

☞ 3618	☞ 3618-1	☞ 3618-2
☞ 3618-3	☞ 361899	☞ 361899-1
☞ 361899-2	☞ 361899-3	☞ 3641
☞ 364197	☞ 364199	☞ 3642
☞ 364299	☞ 3643	☞ 364399
☞ 3644	☞ 364499	☞ 3645
☞ 364599	☞ 3647	☞ 3648
☞ 3649	☞ 3671	☞ 367199
☞ 3672	☞ 367299	☞ 3673
☞ 367399	☞ 3674	☞ 367499
☞ 3676	☞ 3677	☞ 3678
☞ 3679	☞ 3680	☞ 3683

Harnessing equipment

☞ HA3...e	☞ HA36e	☞ HA36e-CA
☞ HZ-M36	☞ HZ36-K	☞ KHP36
☞ VARICON 7000	☞ VARICON 7000-Eco	☞ VARICON 7000-Eco-CR
☞ VARICON 7000-RD		

Designation	Pole Number	PU (Pieces)	MDQ (Pieces)	Dimensions	
				A (mm)	B (mm)
3623 02	2	3600	3600	5	9.9
3623 03	3	2250	2250	10	14.9
3623 04	4	1800	1800	15	19.9
3623 05	5	1350	1350	20	24.9
3623 06	6	900	1800	25	29.9
3623 07	7	900	1800	30	34.9
3623 08	8	900	1800	35	39.9
3623 09	9	450	1800	40	44.9
3623 10	10	450	1800	45	49.9
3623 11	11	450	1800	50	54.9
3623 12	12	450	1800	55	59.9

Designation to be completed by further details (e.g. for keying, color or material options).

Packaging:

chained, in a cardboard box

X-ON Electronics

Largest Supplier of Electrical and Electronic Components

Click to view similar products for [Unspecified Connectors](#) category:

Click to view products by [Lumberg](#) manufacturer:

Other Similar products are found below :

[1-21107-1](#) [RAD-OUT-8D-REL](#) [RF-17S1N8A80DU](#) [2-21053-5](#) [PSC-28-1](#) [38111](#) [403000A10M050](#) [1-1589688-1](#) [QUINT-PS/1AC/48DC/10](#)
[99 9113 02 05](#) [578302](#) [578286](#) [130623](#) [186316](#) [153253](#) [186328](#) [153276](#) [153341](#) [153322](#) [153354](#) [193951](#) [130642](#) [1713941](#) [HC-DD72-I-](#)
[CT-F](#) [VC-AR1/2M-S88-SET](#) [RC-5AS2000](#) [RC-Z2068](#) [VC-TR5/6M](#) [RAD-900-CONF-RF1](#) [RAD-CON-SMA-N-SS](#) [RAD-ISM-900-ANT-](#)
[OMNI-0-6](#) [RAD-PIG-EF316-N-RSMA](#) [RIF-0-RPT-12DC/21](#) [RIF-1-BPT/2X21](#) [RIF-1-RPT-LV-120AC/2X21AU](#) [RIF-RH-1](#) [SIM-AMSC1](#)
[PV-FT-C2F-HSG](#) [HC-EVO-B06-HHFS-2B-PL-BK](#) [99 0210 00 04](#) [801377](#) [803579](#) [710-00007](#) [122.005-6](#) [122.012-10](#) [122.018-10](#) [122.038-6](#)
[125.038-8](#) [135.016](#) [136.0804](#)