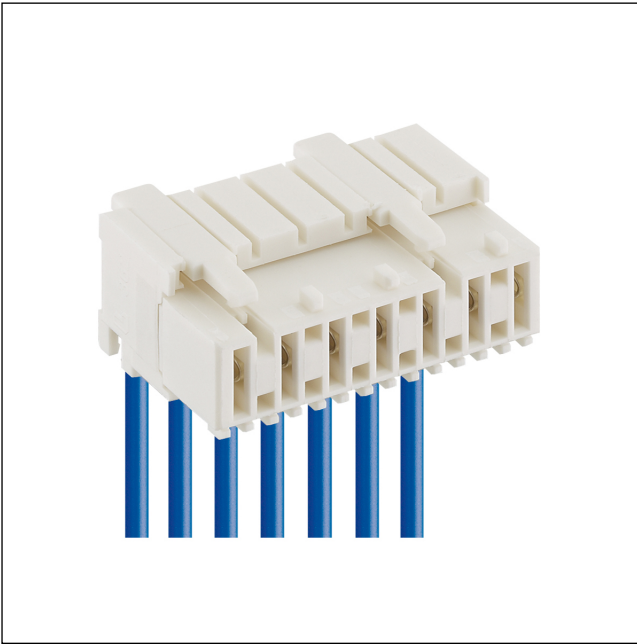


36

3623

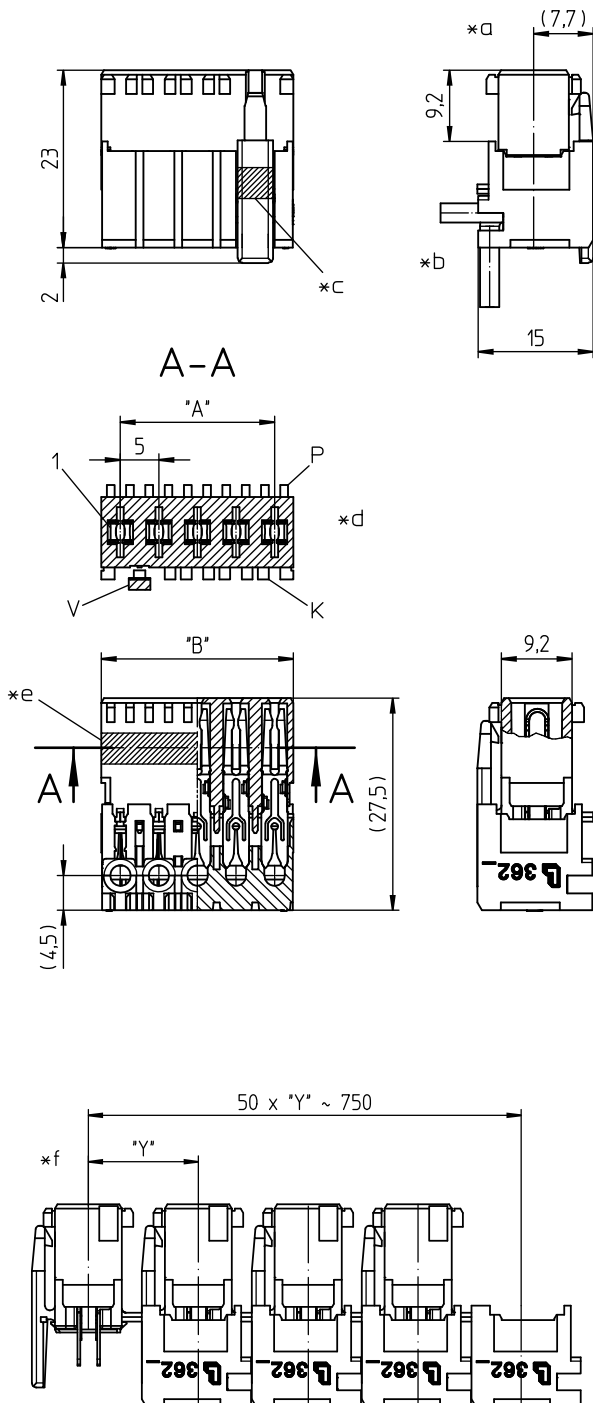
RAST 5 connectors, pitch 5.0 mm



RAST 5 connector for indirect mating, insulation displacement technology (IDT), with exterior lock, consecutive placement without loss of pitch

Approvals:





Environmental conditions

Temperature range	-40 °C/+125 °C – 3623 (S..)
	-40 °C/+130 °C – 3623 M08(S..)
	-40 °C/+130 °C – 3623 M20(S..) ¹

¹ upper limit temperature (insulating body) RTI (electrical) of the UL Yellow Card

Materials


Insulating body	PA, V-2 according to UL94 – 3623 (S..)
	PA, V-2 according to UL94 – 3623 M08(S..)
	PA, V-0 according to UL94 – 3623 M20(S..) ¹

Contact spring	CuSn, tin-plated
----------------	------------------


¹ M08: component glow wire resistant (GWT 750 °C), testing acc. to IEC 60695-2-11, assessment acc. to IEC 60335-1 (flame < 2 s)

M20: material halogen-free, GWFI 960 °C (0.75 mm), GWIT 775 °C (0.75 mm)

Mechanical data

Mating with	tab contact 6.3 mm x 0.8 mm according to DIN 46244
Insertion force/contact	≤ 4,0 N
Withdrawal force/contact	≥ 1,0 N
Keying proposals	at www.lumberg.com 

Connectable conductors for IDT area

Construction	discrete conductor, notched flat cable 5.0 mm
Section min.	0,22 mm ²
Section max.	1 mm ²
Insulation diameter	≤ 2,5 mm
Approved cables	at www.lumberg.com 

Electrical data (at T_{amb} 20 °C)

Contact resistance	≤ 5 mΩ
Rated current	10 A (0,75 mm ² , T _{amb} 70 °C) – 3623 (M..)
	5 A (0,38 mm ² , T _{amb} 70 °C) – 3623 (M..)S01
Rated voltage	250 V AC
Material group	I (IEC)/0 (UL) (CTI ≥ 600) – 3623 (S..)
	IIIa (IEC)/2 (UL) (CTI ≥ 250) – 3623 M08(S..)
	I (IEC)/2 (UL) (CTI ≥ 600) – 3623 M20(S..)
Creepage distance	3,4 mm
Clearance	3,4 mm
Insulation resistance	> 10 GΩ

- *a terminated connector
- *b cable departure 90° or 180°
- *c color keying option (FB) according to customer's specification
- *d K = keying
P = positioning
V = lock
- *e color marking blue at 3623 (M...)S01
- *f chaining of the component parts (state of delivery)

Associated products

Counterparts

3618	3618-1	3618-2
3618-3	361899	361899-1
361899-2	361899-3	3641
364197	364199	3642
364299	3643	364399
3644	364499	3645
364599	3647	3648
3649	3671	367199
3672	367299	3673
367399	3674	367499
3676	3677	3678
3679	3680	3683

Harnessing equipment

HA3...e	HA36e	HA36e-CA
HZ-M36	HZ36-K	KHP36
VARICON 7000	VARICON 7000-Eco	VARICON 7000-Eco-CR
VARICON 7000-RD		

Designation	Pole Number	PU (Pieces)	MDQ (Pieces)	Dimensions	
				A (mm)	B (mm)
3623 02	2	3600	3600	5	9.9
3623 03	3	2250	2250	10	14.9
3623 04	4	1800	1800	15	19.9
3623 05	5	1350	1350	20	24.9
3623 06	6	900	1800	25	29.9
3623 07	7	900	1800	30	34.9
3623 08	8	900	1800	35	39.9
3623 09	9	450	1800	40	44.9
3623 10	10	450	1800	45	49.9
3623 11	11	450	1800	50	54.9
3623 12	12	450	1800	55	59.9

Designation to be completed by further details (e.g. for keying, color or material options).

Packaging:

chained, in a cardboard box

X-ON Electronics

Largest Supplier of Electrical and Electronic Components

Click to view similar products for [Unspecified Connectors](#) category:

Click to view products by [Lumberg](#) manufacturer:

Other Similar products are found below :

[1-21107-1](#) [RAD-OUT-8D-REL](#) [1409899](#) [1-1589688-1](#) [770690-4](#) [QUINT-PS/1AC/48DC/10](#) [1200110](#) [1200113](#) [LTWBD-06PMMP-LC7001](#)
[RC-5AS2000](#) [RAD-900-CONF-RF1](#) [RAD-CON-SMA-N-SS](#) [RAD-PIG-EF316-N-RSMA](#) [RAD-ISM-2400-ANT-VAN-3-0-R](#) [RIF-0-RPT-](#)
[12DC/21](#) [RIF-1-BPT/2X21](#) [RIF-RH-1](#) [2000 3/8](#) [3040 17-1/2](#) [GOL BLUE 25](#) [800307](#) [5043994](#) [5736861](#) [1714624](#) [5772605](#) [1016808](#)
[41.032.4053.1](#) [RM12BPE-3PH\(76\)](#) [RM12BPE-6PH\(76\)](#) [44429310](#) [RM15TPD-10P\(76\)](#) [0250 02](#) [0250 03](#) [0250 04](#) [0250 05](#) [0250 06](#) [0250 07](#)
[0250 08](#) [0251 02](#) [0251 04](#) [0251 05](#) [0251 07](#) [0251 08](#) [0251 09](#) [0252 02](#) [0252 03](#) [0252 04](#) [0252 05](#) [0252 07](#) [0252 09](#)