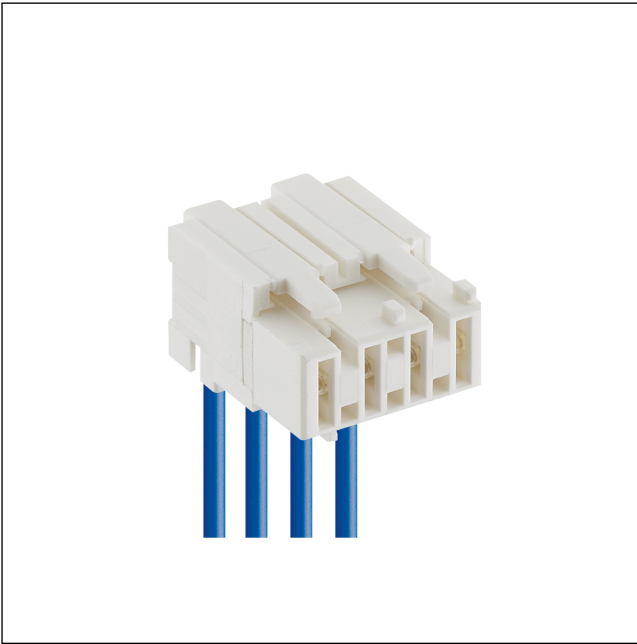


36

3625

RAST 5 connectors, pitch 5.0 mm



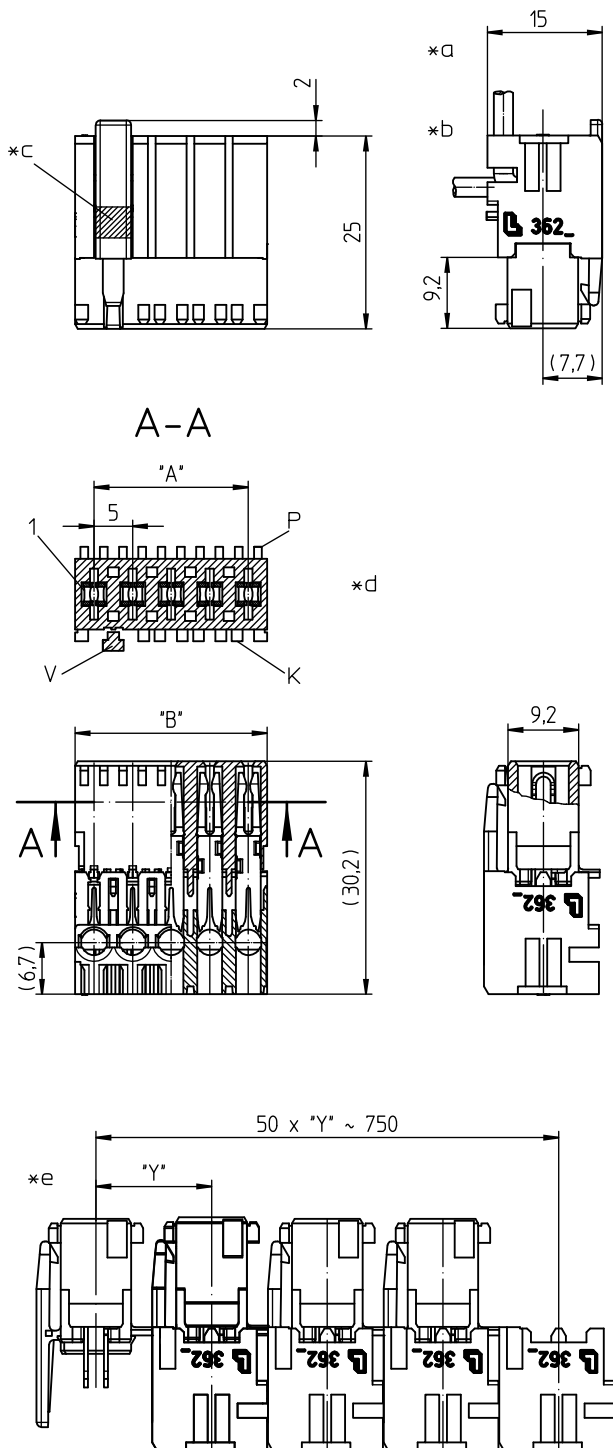
RAST 5 connector for indirect mating, insulation displacement technology (IDT), with exterior locking, consecutive placement without loss of pitch

---

Approvals:



36 3625



### Environmental conditions

Temperature range	-40 °C/+125 °C – 3625 (S..)
	-40 °C/+130 °C – 3625 M08(S..)
	-40 °C/+130 °C – 3625 M20(S..) <sup>1</sup>

<sup>1</sup> upper limit temperature (insulating body) RTI (electrical) of the UL Yellow Card


### Materials

Insulating body	PA, V-2 according to UL94 – 3625
	PA, V-2 according to UL94 – 3625 M08
	PA, V-0 according to UL94 – 3625 M20 <sup>1</sup>


Contact spring	CuSn, silver-plated
----------------	---------------------

<sup>1</sup> M08: component glow wire resistant (GWT 750 °C), testing acc. to IEC 60695-2-11, assessment acc. to IEC 60335-1 (flame < 2 s)  
M20: material halogen-free, GWFI 960 °C (0.75 mm), GWIT 775 °C (0.75 mm)

### Mechanical data

Mating with	tab contact 6.3 mm x 0.8 mm according to DIN 46244
Insertion force/contact	≤ 12 N
Withdrawal force/contact	≥ 1,5 N
Keying proposals	at <a href="http://www.lumberg.com">www.lumberg.com</a> 

### Connectable conductors for IDT area

Construction	discrete conductor, notched flat cable 5.0 mm
Section min.	0,75 mm <sup>2</sup>
Section max.	1,5 mm <sup>2</sup>
Insulation diameter	≤ 3,0 mm
Approved cables	at <a href="http://www.lumberg.com">www.lumberg.com</a> 

### Electrical data (at T<sub>amb</sub> 20 °C)

Contact resistance	≤ 5 mΩ
Rated current	16 A (1,5 mm <sup>2</sup> , T <sub>amb</sub> 70 °C) 12 A (1,0 mm <sup>2</sup> , T <sub>amb</sub> 70 °C)
Rated voltage	250 V AC
Material group	I (IEC)/0 (UL) (CTI ≥ 600) – 3625 IIIa (IEC)/2 (UL) (CTI ≥ 250) – 3625 M08 I (IEC)/2 (UL) (CTI ≥ 600) – 3625 M20
Creepage distance	3,6 mm
Clearance	3,6 mm
Insulation resistance	> 10 GΩ

- \*a terminated connector
- \*b cable departure 90° or 180°
- \*c color keying option (FB) according to customer's specification
- \*d K = keying  
P = positioning  
V = lock
- \*e chaining of the component parts (state of delivery)

**Associated products**

Counterparts

<a href="#">☞ 3641 V167</a>	<a href="#">☞ 364197 V167</a>	<a href="#">☞ 3642 V167</a>
<a href="#">☞ 3643 V167</a>	<a href="#">☞ 3644 V167</a>	<a href="#">☞ 3645 V167</a>

Harnessing equipment

<a href="#">☞ HA3...e</a>	<a href="#">☞ HA36e</a>	<a href="#">☞ HA36e-CA</a>
<a href="#">☞ HZ-M36</a>	<a href="#">☞ HZ36-K</a>	<a href="#">☞ KHP36</a>
<a href="#">☞ VARICON 7000</a>	<a href="#">☞ VARICON 7000-Eco</a>	<a href="#">☞ VARICON 7000-Eco-CR</a>
<a href="#">☞ VARICON 7000-RD</a>		

36

3625

Designation	Pole Number	PU (Pieces)	MDQ (Pieces)	Dimensions	
				A (mm)	B (mm)
3625 02	2	3600	3600	5	9.9
3625 03	3	2250	2250	10	14.9
3625 04	4	1800	1800	15	19.9

Designation to be completed by further details (e.g. for keying, color or material options).

**Packaging:**

chained, in a cardboard box

## X-ON Electronics

Largest Supplier of Electrical and Electronic Components

*Click to view similar products for [Unspecified Connectors](#) category:*

*Click to view products by [Lumberg](#) manufacturer:*

Other Similar products are found below :

[1-21107-1](#) [RAD-OUT-8D-REL](#) [1409899](#) [1-1589688-1](#) [770690-4](#) [QUINT-PS/1AC/48DC/10](#) [1200110](#) [1200113](#) [LTWBD-06PMMP-LC7001](#)  
[RC-5AS2000](#) [RAD-900-CONF-RF1](#) [RAD-CON-SMA-N-SS](#) [RAD-PIG-EF316-N-RSMA](#) [RAD-ISM-2400-ANT-VAN-3-0-R](#) [RIF-0-RPT-](#)  
[12DC/21](#) [RIF-1-BPT/2X21](#) [RIF-RH-1](#) [2000 3/8](#) [3040 17-1/2](#) [GOL BLUE 25](#) [800307](#) [5043994](#) [5736861](#) [1714624](#) [5772605](#) [1016808](#)  
[41.032.4053.1](#) [RM12BPE-3PH\(76\)](#) [RM12BPE-6PH\(76\)](#) [44429310](#) [RM15TPD-10P\(76\)](#) [0250 02](#) [0250 03](#) [0250 04](#) [0250 05](#) [0250 06](#) [0250 07](#)  
[0250 08](#) [0251 02](#) [0251 04](#) [0251 05](#) [0251 07](#) [0251 08](#) [0251 09](#) [0252 02](#) [0252 03](#) [0252 04](#) [0252 05](#) [0252 07](#) [0252 09](#)