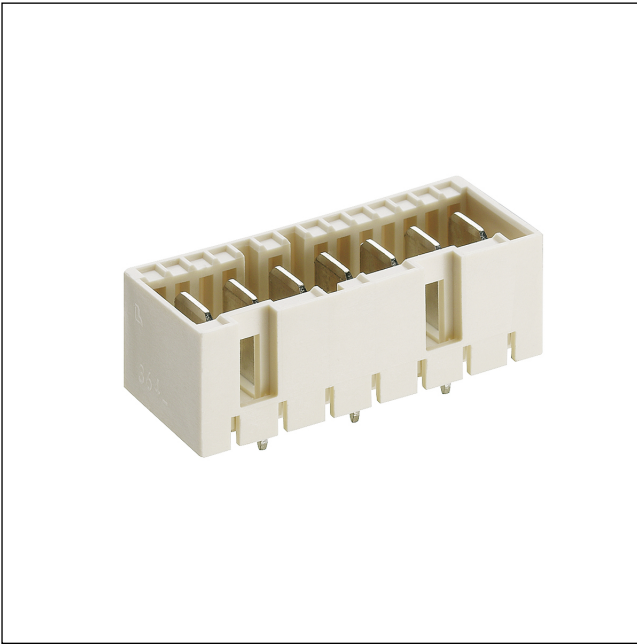


36

3641

RAST 5 connectors, pitch 5.0 mm



RAST 5 tab header, upright, with positioning spigot

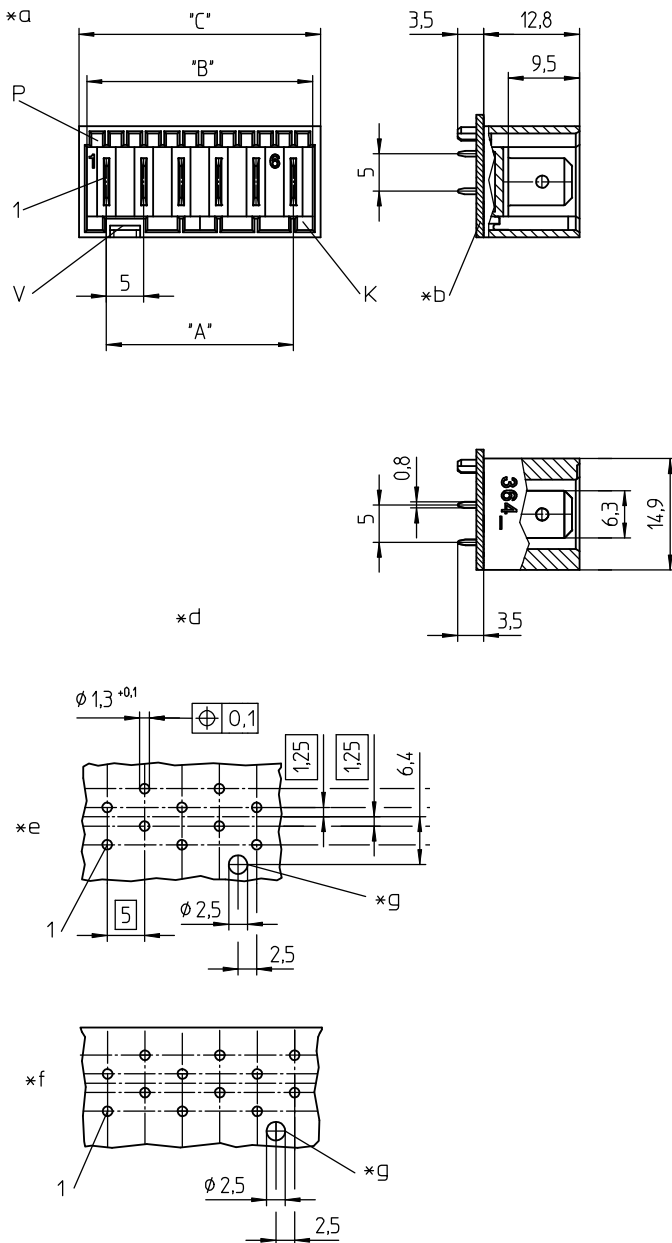
---

Approvals:



36

3641



#### Environmental conditions

Temperature range -40 °C/+120 °C

#### Materials

Insulating body PA GF, V-0 according to UL94<sup>1</sup>  
Contact tab CuZn, pre-nickel and tin-plated

<sup>1</sup> component glow wire resistant (GWT 750 °C), testing acc. to IEC 60695-2-11, assessment acc. to IEC 60335-1 (flame < 2 s)

#### Mechanical data








Contact tab 6.3 x 0.8 mm according to DIN 42644

Keying proposals at [www.lumberg.com](http://www.lumberg.com) 

#### Electrical data (at T<sub>amb</sub> 20 °C)

Rated current 10 A (T<sub>amb</sub> 70 °C)  
Rated voltage 250 V AC  
Material group IIIa (IEC)/2 (UL) (CTI ≥ 250)  
Creepage distance 4,2 mm  
Clearance 4,2 mm  
Insulation resistance > 10 GΩ

#### Associated products

Counterparts  
 3611  3615  3615-1  
 3615-2  3615-3  3623  
 3623 01 V01  3626

36

3641

- 
- \*a K = keying  
P = positioning  
V = space for lock
  - \*b printed circuit board
  - \*d printed circuit board layout, solder side view
  - \*e uneven pole numbers
  - \*f even pole numbers
  - \*g bore hole for positioning spigot

36

3641

| Designation | Pole Number | PU (Pieces) | MDQ (Pieces) | Dimensions |        |        |
|-------------|-------------|-------------|--------------|------------|--------|--------|
|             |             |             |              | A (mm)     | B (mm) | C (mm) |
| 3641 02     | 2           | 250         | 1000         | 5          | 10.2   | 12.3   |
| 3641 03     | 3           | 250         | 1000         | 10         | 15.2   | 17.3   |
| 3641 04     | 4           | 250         | 1000         | 15         | 20.2   | 22.3   |
| 3641 05     | 5           | 250         | 1000         | 20         | 25.2   | 27.3   |
| 3641 06     | 6           | 250         | 1000         | 25         | 30.2   | 32.3   |
| 3641 07     | 7           | 250         | 1000         | 30         | 35.2   | 37.3   |
| 3641 08     | 8           | 250         | 1000         | 35         | 40.2   | 42.3   |
| 3641 09     | 9           | 250         | 1000         | 40         | 45.2   | 47.3   |
| 3641 10     | 10          | 250         | 1000         | 45         | 50.2   | 52.3   |
| 3641 11     | 11          | 250         | 1000         | 50         | 55.2   | 57.3   |
| 3641 12     | 12          | 250         | 1000         | 55         | 60.2   | 62.3   |

Designation to be completed by further details (e.g. for keying, color or material options).

**Packaging:**

in bulk, in a cardboard box

## X-ON Electronics

Largest Supplier of Electrical and Electronic Components

*Click to view similar products for [Headers & Wire Housings](#) category:*

*Click to view products by [Lumberg](#) manufacturer:*

Other Similar products are found below :

[95000-104TRLF](#) [10135584-644402LF](#) [DF62W-EP2022PCA](#) [95000-106TRLF](#) [DF62W-2022SCA](#) [DF62W-EP2022PC](#) [2203348](#) [DF62W-2022SC](#) [1084018](#) [1029039](#) [1084017](#) [802-10-012-10-002000](#) [1112640](#) [1112639](#) [891-007-9SS-BST1T](#) [000-34000](#) [0008550134](#) [0009482033](#) [0009507031](#) [57102-F02-18ULF](#) [57102-S06-03LF](#) [57202-S52-04LF](#) [PCN6-15S-2.5E](#) [0039019024](#) [58102-G61-06LF](#) [582553-1](#) [0009485154](#) [0009508121](#) [0022285053](#) [0050291907](#) [018731A](#) [LY20-4P-DT1-P1E-BR](#) [02.125.8002.8](#) [60101931](#) [60598-1 \(Cut Strip\)](#) [M1625-3R/100](#) [61062-3](#) [61082-181009](#) [CSU011177004](#) [636-1427](#) [638009-1](#) [641938-9](#) [641991-4](#) [644168-1](#) [644827-2](#) [647662-1](#) [65039-019ELF](#) [65692-001LF](#) [65781-018](#) [65781-047](#)