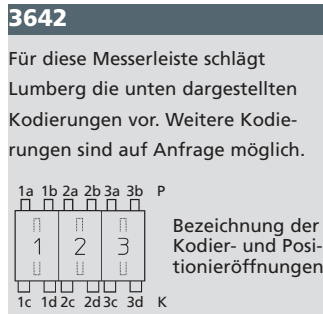
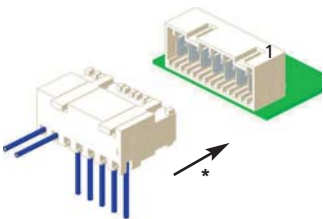
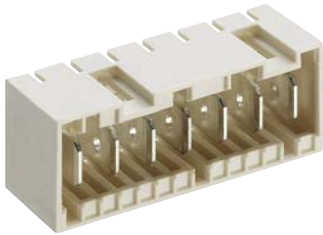
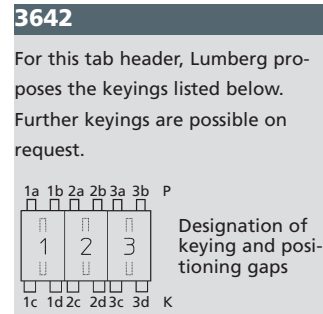


Kodierungen nach RAST 5 für Macromodul-Messerleiste 3642
Keyings according to RAST 5 for Macromodul tab header 3642
Codages suivant RAST 5 pour réglette à couteaux Macromodul 3642



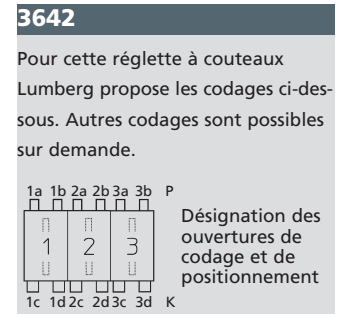
Steckweise indirekt, mit RAST-5-Steckverbinder:
 Kodierung durch Kodiernasen am Steckverbinder und entsprechende Öffnungen an der Messerleiste

Alle Zeichnungen in Steckrichtung (*) gesehen



Indirect connection, with RAST 5 connector:
 Keying by means of keying noses at the connector and matching gaps at the tab header

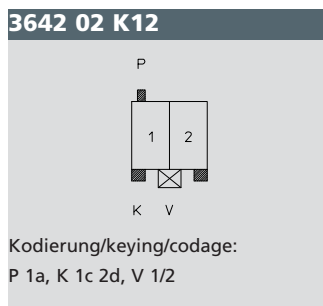
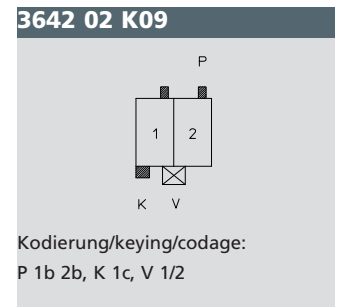
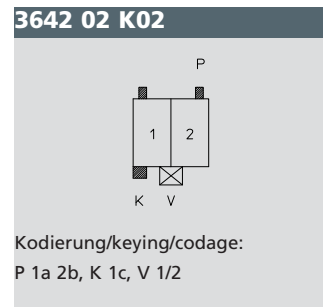
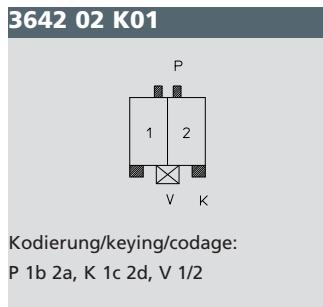
All drawings in view of mating direction (*)



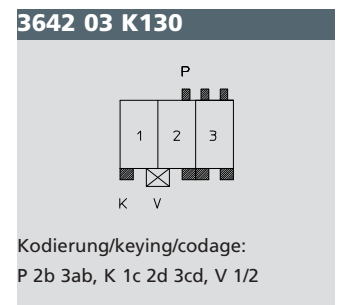
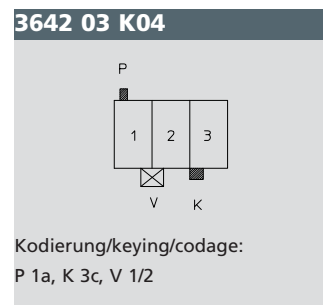
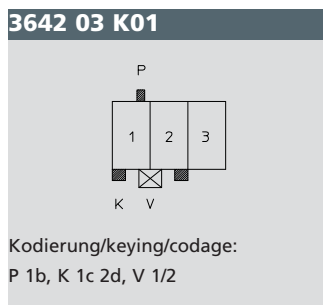
Connexion indirecte, avec connecteur RAST 5 :
 Codage par plots de codage au connecteur et ouvertures correspondantes à la réglette à couteaux

Tous dessins vus dans le sens d'enfichage (*)

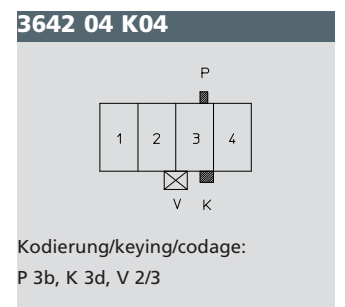
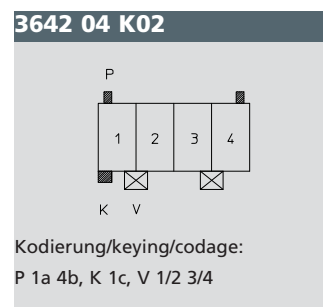
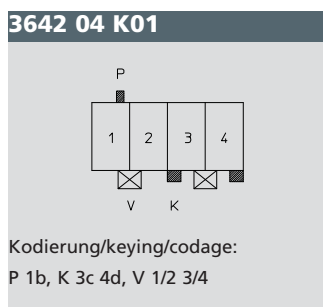
2
 2-polig
 2 poles
 2 pôles



3
 3-polig
 3 poles
 3 pôles



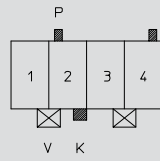
4
 4-polig
 4 poles
 4 pôles



4

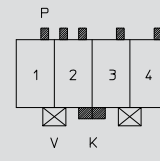
4-polig
 4 poles
 4 pôles

3642 04 K07



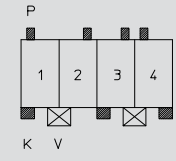
Kodierung/keying/codage:
 P 2a 4b, K 2d, V 1/2 3/4

3642 04 K63



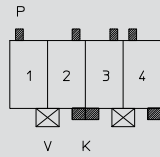
Kodierung/keying/codage:
 P 1b 2ab 3b 4b, K 2d 3c, V 1/2 3/4

3642 04 K65



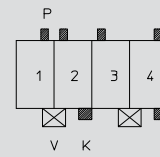
Kodierung/keying/codage:
 P 1a 2b 3b 4a, K 1c 3c 4d, V 1/2 3/4

3642 04 K86



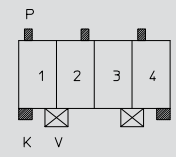
Kodierung/keying/codage:
 P 1a 2b 3b 4a, K 2d 3c 4d, V 1/2 3/4

3642 04 K109



Kodierung/keying/codage:
 P 1b 2a 3a 4b, K 2d 4d, V 1/2 3/4

3642 04 K110

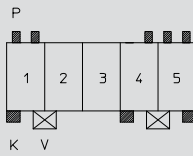


Kodierung/keying/codage:
 P 1a 2b 4a, K 1c 4d, V 1/2 3/4

5

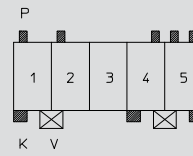
5-polig
 5 poles
 5 pôles

3642 05 K12



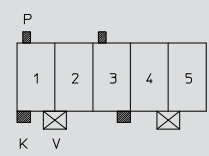
Kodierung/keying/codage:
 P 1ab 4b 5ab, K 1c 4c 5d, V 1/2 4/5

3642 05 K28



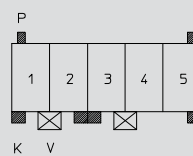
Kodierung/keying/codage:
 P 1a 2a 4b 5ab, K 1c 4c 5d, V 1/2 4/5

3642 05 K30



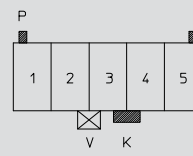
Kodierung/keying/codage:
 P 1a 3a, K 1c 3d, V 1/2 4/5

3642 05 K31



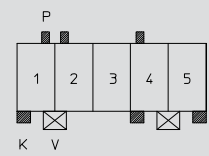
Kodierung/keying/codage:
 P 1a 5b, K 1c 2d 3c 5d, V 1/2 3/4

3642 05 K50



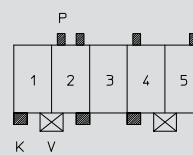
Kodierung/keying/codage:
 P 1a 5b, K 3d 4c, V 2/3

3642 05 K51



Kodierung/keying/codage:
 P 1b 2a 4a, K 1c 4c 5d, V 1/2 4/5

3642 05 K69

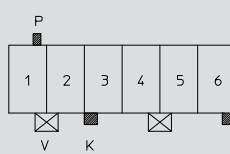


Kodierung/keying/codage:
 P 2ab 4a 5b, K 1c 2d, 4c, V 1/2 4/5

6

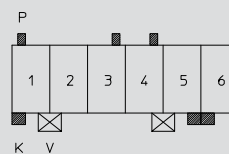
6-polig
 6 poles
 6 pôles

3642 06 K01



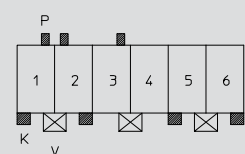
Kodierung/keying/codage:
 P 1b, K 3c 6d, V 1/2 4/5

3642 06 K30



Kodierung/keying/codage:
 P 1a 3b 4b, K 1c 5d 6c, V 1/2 4/5

3642 06 K50

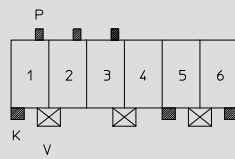


Kodierung/keying/codage:
 P 1b 2a 3b, K 1c 2d 5c 6d, V 1/2 3/4 5/6

6

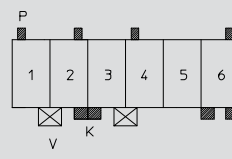
6-polig (Fortsetzung)
 6 poles (continued)
 6 pôles (suite)

3642 06 K51



Kodierung/keying/codage:
 P 1b 2b 3b, 1c 5c 6d, V 1/2 3/4 5/6

3642 06 K73

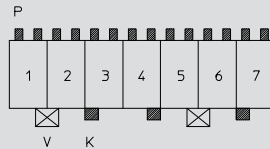


Kodierung/keying/codage:
 P 1a 2b 4a 6b, K 2d 3c 6cd, V 1/2 3/4

7

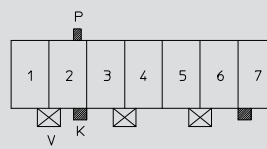
7-polig
 7 poles
 7 pôles

3642 07 K22



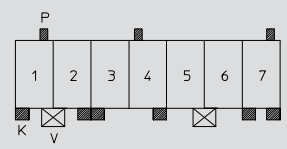
Kodierung/keying/codage:
 P 1ab 2ab 3ab 4ab 5ab 6ab 7ab,
 K 3c 4d 7c, V 1/2 5/6

3642 07 K35



Kodierung/keying/codage:
 P 2b, K 2d 7c, V 1/2 3/4 5/6

3642 07 K76

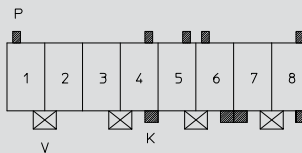


Kodierung/keying/codage:
 P 1b 4a 7b, K 1c 2d 3c 4d 7cd,
 V 1/2 5/6

8

8-polig
 8 poles
 8 pôles

3642 08 K44

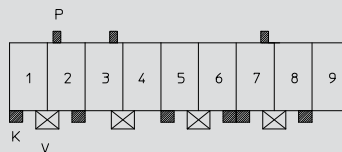


Kodierung/keying/codage:
 P 1a 4b 5b 6a 8b, K 4d 6d 7c 8d, V 1/2 3/4 5/6 7/8

9

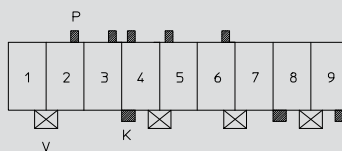
9-polig
 9 poles
 9 pôles

3642 09 K42



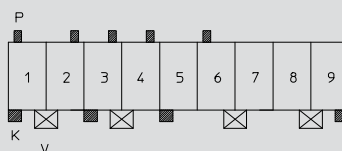
Kodierung/keying/codage:
 P 2a 3b 7b, K 1c 2d 5c 6d 7c 8d, V 1/2 3/4 5/6 7/8

3642 09 K43



Kodierung/keying/codage:
 P 2b 3b 4a 5a 6b, K 4c 8c 9d, V 1/2 4/5 6/7 8/9

3642 09 K53

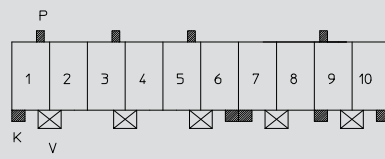


Kodierung/keying/codage:
 P 1a 2b 3b 4b 6a, K 1c 3c 5c 9d, V 1/2 3/4 6/7 8/9

10

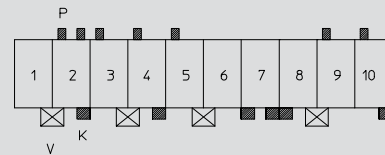
10-polig
 10 poles
 10 pôles

3642 10 K36



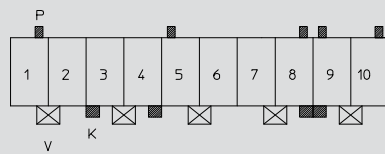
Kodierung/keying/codage:
 P 1b 3b 5b 9a, K 1c 6d 7c 9c 10d, V 1/2 3/4 5/6 7/8 9/10

3642 10 K46



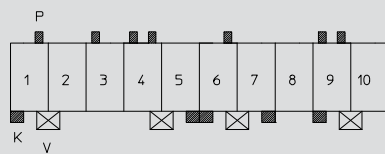
Kodierung/keying/codage:
 P 2ab 3a 4a 5a 9a 10a, K 2d 4d 7cd 8c 10d, v 1/2 3/4 5/6 8/9

3642 10 K50



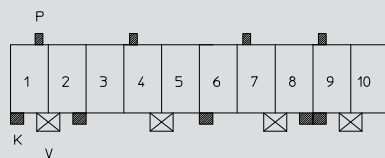
Kodierung/keying/codage:
 P 1b 5a 8b 9a 10b, K 3c 4d 8d 9c, V 1/2 3/4 5/6 7/8 9/10

3642 10 K51



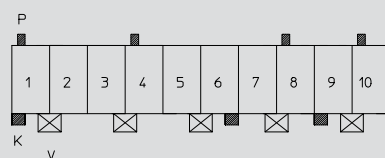
Kodierung/keying/codage:
 P 1b 3a 4ab 6b 9ab, K 1c 5d 6c 7d 9c, V 1/2 4/5 6/7 9/10

3642 10 K52



Kodierung/keying/codage:
 P 1b 4a 7a 9a, K 1c 2d 6c, 8d 9c, V 1/2 4/5 7/8 9/10

3642 10 K72

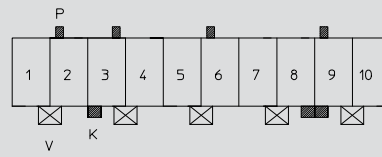


Kodierung/keying/codage:
 P 1a 4a 8a 10a, K 1c 6b 9c, V 1/2 3/4 5/6 7/8 9/10

10

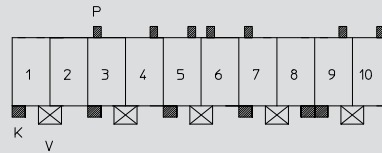
10-polig (Fortsetzung)
 10 poles (continued)
 10 pôles (suite)

3642 10 K74



Kodierung/keying/codage:
 P 2a 3b 6a 9a, K 3c 8d 9c, V 1/2 3/4 5/6 7/8 9/10

3642 10 K75

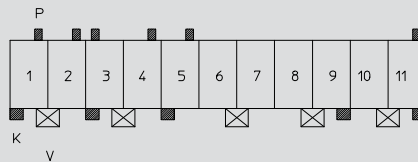


Kodierung/keying/codage:
 P 3a 4b 5b 6a 7a 9b 10b, K 1c 3c 5c 7c 8d 9c, V 1/2 3/4 5/6 7/8 9/10

11

11-polig
 11 poles
 11 pôles

3642 11 K55

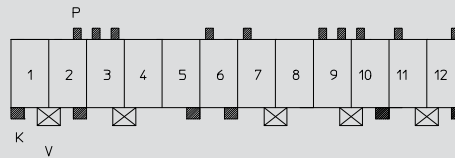


Kodierung/keying/codage:
 P 1b 2b 3a 4b 5b 11b, K 1c 3c 5c 9d 11d, V 1/2 3/4 6/7 8/9 10/11

12

12-polig
 12 poles
 12 pôles

3642 12 K65



Kodierung/keying/codage:
 P 2b 3ab 6a 7a 9ab 10a 11a 12b, K 1c 2d 5d 6d 10d 12d, V 1/2 3/4 7/8 9/10 11/12

X-ON Electronics

Largest Supplier of Electrical and Electronic Components

Click to view similar products for [Relay Sockets & Hardware](#) category:

Click to view products by [Lumberg](#) manufacturer:

Other Similar products are found below :

[7-1393143-3](#) [7-1616347-8](#) [7-1616350-5](#) [8-1616360-0](#) [8-1616360-6](#) [9-1616339-5](#) [9-1616358-1](#) [9-1616359-7](#) [9-1616360-2](#) [PLC-10](#) [PT08QN](#)
[PT 1/8 D = 3.2](#) [12082001](#) [R99-11 FOR MY\(NAMEPLATE\)](#) [RES100K](#) [1393824-3](#) [13900001](#) [1415526-1](#) [1419106-5](#) [1423683-1](#) [1415037-1](#)
[14486001](#) [1423685-1](#) [MS-24H](#) [16-1328](#) [1616339-8](#) [MT78N60](#) [17540001](#) [20584002](#) [20C419](#) [2-1393102-4](#) [2-1419106-9](#) [2-1608090-1](#)
[P70A AC100/110](#) [PB-4H](#) [21B212](#) [RSE120027](#) [9-1616337-0](#) [9-1616337-6](#) [9-1616358-3](#) [27E1038](#) [27E448](#) [S82Y-RN](#) [2944533](#) [LMC-1](#) [16-](#)
[1340](#) [16154040](#) [9P40X1](#) [17891020](#) [17892040](#)