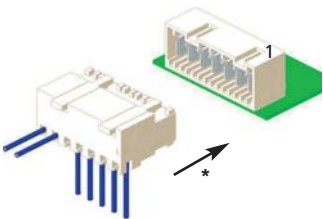
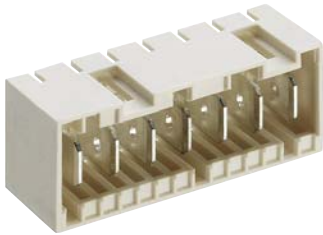
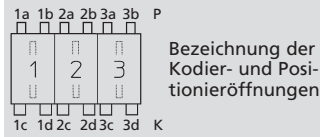


**Kodierungen nach RAST 5 für Macromodul-Messerleiste 3642**  
**Keyings according to RAST 5 for Macromodul tab header 3642**  
**Codages suivant RAST 5 pour réglette à couteaux Macromodul 3642**



**3642**

Für diese Messerleiste schlägt Lumberg die unten dargestellten Kodierungen vor. Weitere Kodierungen sind auf Anfrage möglich.



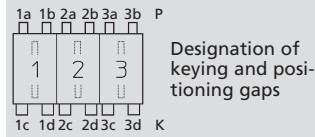
**Steckweise indirekt**, mit RAST-5-Steckverbinder:

Kodierung durch Kodiernasen am Steckverbinder und entsprechende Öffnungen an der Messerleiste

Alle Zeichnungen in Steckrichtung (\*) gesehen

**3642**

For this tab header, Lumberg proposes the keyings listed below. Further keyings are possible on request.



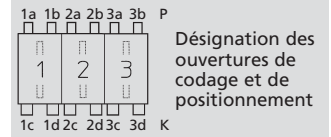
**Indirect connection**, with RAST 5 connector:

Keying by means of keying noses at the connector and matching gaps at the tab header

All drawings in view of mating direction (\*)

**3642**

Pour cette réglette à couteaux Lumberg propose les codages ci-dessous. Autres codages sont possibles sur demande.



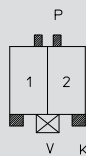
**Connexion indirecte**, avec connecteur RAST 5 :

Codage par plots de codage au connecteur et ouvertures correspondantes à la réglette à couteaux

Tous dessins vus dans le sens d'enfichage (\*)

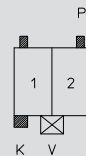
**2**  
 2-polig  
 2 poles  
 2 pôles

**3642 02 K01**



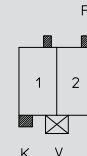
Kodierung/keying/codage:  
 P 1b 2a, K 1c 2d, V 1/2

**3642 02 K02**



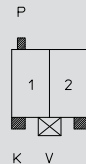
Kodierung/keying/codage:  
 P 1a 2b, K 1c, V 1/2

**3642 02 K09**



Kodierung/keying/codage:  
 P 1b 2b, K 1c, V 1/2

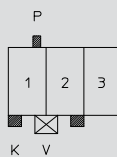
**3642 02 K12**



Kodierung/keying/codage:  
 P 1a, K 1c 2d, V 1/2

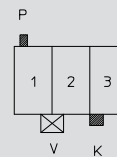
**3**  
 3-polig  
 3 poles  
 3 pôles

**3642 03 K01**



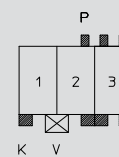
Kodierung/keying/codage:  
 P 1b, K 1c 2d, V 1/2

**3642 03 K04**



Kodierung/keying/codage:  
 P 1a, K 3c, V 1/2

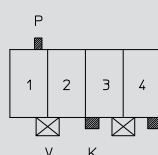
**3642 03 K130**



Kodierung/keying/codage:  
 P 2b 3ab, K 1c 2d 3cd, V 1/2

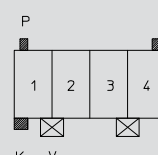
**4**  
 4-polig  
 4 poles  
 4 pôles

**3642 04 K01**



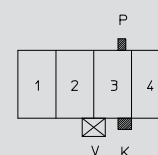
Kodierung/keying/codage:  
 P 1b, K 3c 4d, V 1/2 3/4

**3642 04 K02**



Kodierung/keying/codage:  
 P 1a 4b, K 1c, V 1/2 3/4

**3642 04 K04**

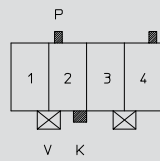


Kodierung/keying/codage:  
 P 3b, K 3d, V 2/3

# 4

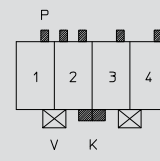
4-polig  
 4 poles  
 4 pôles

## 3642 04 K07



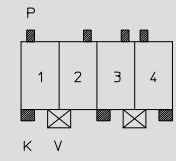
Kodierung/keying/codage:  
 P 2a 4b, K 2d, V 1/2 3/4

## 3642 04 K63



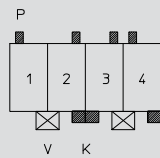
Kodierung/keying/codage:  
 P 1b 2ab 3b 4b, K 2d 3c, V 1/2 3/4

## 3642 04 K65



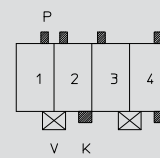
Kodierung/keying/codage:  
 P 1a 2b 3b 4a, K 1c 3c 4d, V 1/2 3/4

## 3642 04 K86



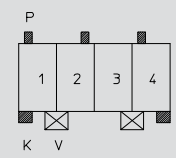
Kodierung/keying/codage:  
 P 1a 2b 3b 4a, K 2d 3c 4d, V 1/2 3/4

## 3642 04 K109



Kodierung/keying/codage:  
 P 1b 2a 3a 4b, K 2d 4d, V 1/2 3/4

## 3642 04 K110

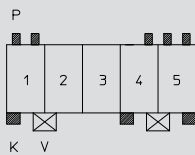


Kodierung/keying/codage:  
 P 1a 2b 4a, K 1c 4d, V 1/2 3/4

# 5

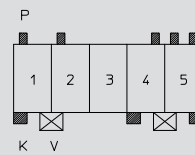
5-polig  
 5 poles  
 5 pôles

## 3642 05 K12



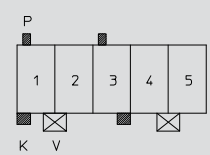
Kodierung/keying/codage:  
 P 1ab 4b 5ab, K 1c 4c 5d, V 1/2 4/5

## 3642 05 K28



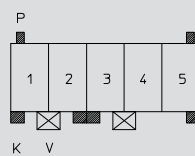
Kodierung/keying/codage:  
 P 1a 2a 4b 5ab, K 1c 4c 5d, V 1/2 4/5

## 3642 05 K30



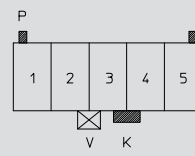
Kodierung/keying/codage:  
 P 1a 3a, K 1c 3d, V 1/2 4/5

## 3642 05 K31



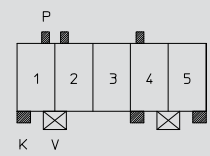
Kodierung/keying/codage:  
 P 1a 5b, K 1c 2d 3c 5d, V 1/2 3/4

## 3642 05 K50



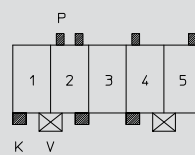
Kodierung/keying/codage:  
 P 1a 5b, K 3d 4c, V 2/3

## 3642 05 K51



Kodierung/keying/codage:  
 P 1b 2a 4a, K 1c 4c 5d, V 1/2 4/5

## 3642 05 K69

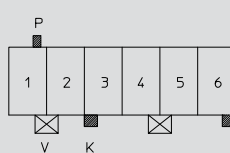


Kodierung/keying/codage:  
 P 2ab 4a 5b, K 1c 2d, 4c, V 1/2 4/5

# 6

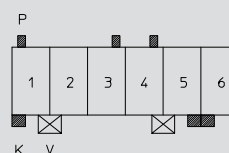
6-polig  
 6 poles  
 6 pôles

## 3642 06 K01



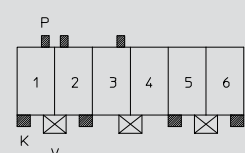
Kodierung/keying/codage:  
 P 1b, K 3c 6d, V 1/2 4/5

## 3642 06 K30



Kodierung/keying/codage:  
 P 1a 3b 4b, K 1c 5d 6c, V 1/2 4/5

## 3642 06 K50

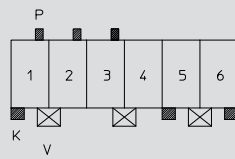


Kodierung/keying/codage:  
 P 1b 2a 3b, K 1c 2d 5c 6d, V 1/2 3/4 5/6

# 6

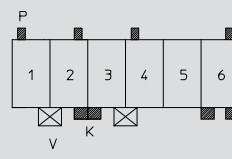
6-polig (Fortsetzung)  
 6 poles (continued)  
 6 pôles (suite)

## 3642 06 K51



Kodierung/keying/codage:  
 P 1b 2b 3b, 1c 5c 6d, V 1/2 3/4 5/6

## 3642 06 K73

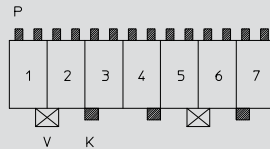


Kodierung/keying/codage:  
 P 1a 2b 4a 6b, K 2d 3c 6cd, V 1/2 3/4

# 7

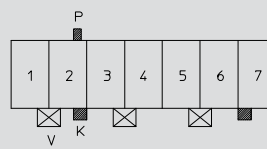
7-polig  
 7 poles  
 7 pôles

## 3642 07 K22



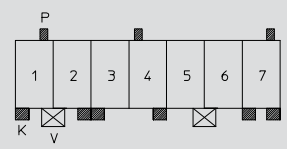
Kodierung/keying/codage:  
 P 1ab 2ab 3ab 4ab 5ab 6ab 7ab,  
 K 3c 4d 7c, V 1/2 5/6

## 3642 07 K35



Kodierung/keying/codage:  
 P 2b, K 2d 7c, V 1/2 3/4 5/6

## 3642 07 K76

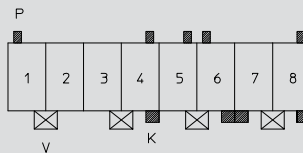


Kodierung/keying/codage:  
 P 1b 4a 7b, K 1c 2d 3c 4d 7cd,  
 V 1/2 5/6

# 8

8-polig  
 8 poles  
 8 pôles

## 3642 08 K44

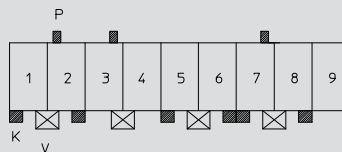


Kodierung/keying/codage:  
 P 1a 4b 5b 6a 8b, K 4d 6d 7c 8d, V 1/2 3/4 5/6 7/8

# 9

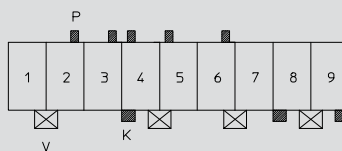
9-polig  
 9 poles  
 9 pôles

## 3642 09 K42



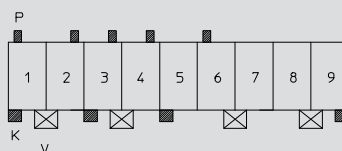
Kodierung/keying/codage:  
 P 2a 3b 7b, K 1c 2d 5c 6d 7c 8d, V 1/2 3/4 5/6 7/8

## 3642 09 K43



Kodierung/keying/codage:  
 P 2b 3b 4a 5a 6b, K 4c 8c 9d, V 1/2 4/5 6/7 8/9

## 3642 09 K53

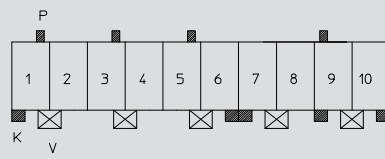


Kodierung/keying/codage:  
 P 1a 2b 3b 4b 6a, K 1c 3c 5c 9d, V 1/2 3/4 6/7 8/9

# 10

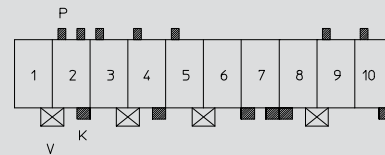
10-polig  
 10 poles  
 10 pôles

## 3642 10 K36



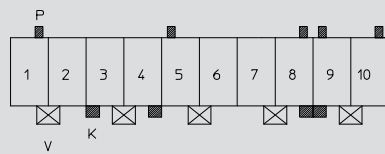
Kodierung/keying/codage:  
 P 1b 3b 5b 9a, K 1c 6d 7c 9c 10d, V 1/2 3/4 5/6 7/8 9/10

## 3642 10 K46



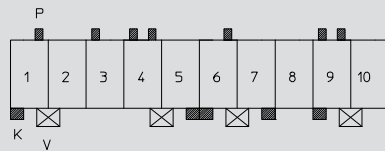
Kodierung/keying/codage:  
 P 2ab 3a 4a 5a 9a 10a, K 2d 4d 7cd 8c 10d, v 1/2 3/4 5/6 8/9

## 3642 10 K50



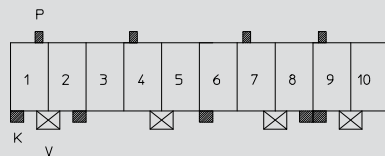
Kodierung/keying/codage:  
 P 1b 5a 8b 9a 10b, K 3c 4d 8d 9c, V 1/2 3/4 5/6 7/8 9/10

## 3642 10 K51



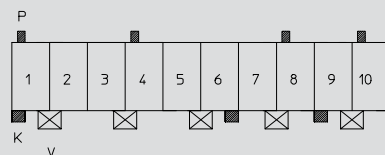
Kodierung/keying/codage:  
 P 1b 3a 4ab 6b 9ab, K 1c 5d 6c 7d 9c, V 1/2 4/5 6/7 9/10

## 3642 10 K52



Kodierung/keying/codage:  
 P 1b 4a 7a 9a, K 1c 2d 6c, 8d 9c, V 1/2 4/5 7/8 9/10

## 3642 10 K72

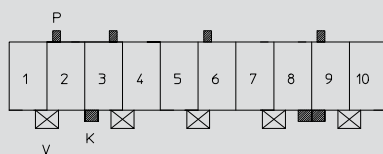


Kodierung/keying/codage:  
 P 1a 4a 8a 10a, K 1c 6b 9c, V 1/2 3/4 5/6 7/8 9/10

# 10

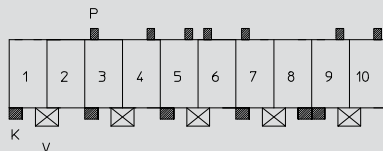
10-polig (Fortsetzung)  
 10 poles (continued)  
 10 pôles (suite)

## 3642 10 K74



Kodierung/keying/codage:  
 P 2a 3b 6a 9a, K 3c 8d 9c, V 1/2 3/4 5/6 7/8 9/10

## 3642 10 K75

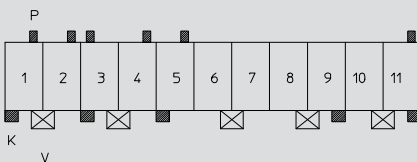


Kodierung/keying/codage:  
 P 3a 4b 5b 6a 7a 9b 10b, K 1c 3c 5c 7c 8d 9c, V 1/2 3/4 5/6 7/8 9/10

# 11

11-polig  
 11 poles  
 11 pôles

## 3642 11 K55

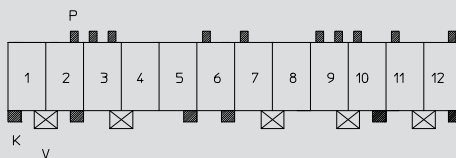


Kodierung/keying/codage:  
 P 1b 2b 3a 4b 5b 11b, K 1c 3c 5c 9d 11d, V 1/2 3/4 6/7 8/9 10/11

# 12

12-polig  
 12 poles  
 12 pôles

## 3642 12 K65



Kodierung/keying/codage:  
 P 2b 3ab 6a 7a 9ab 10a 11a 12b, K 1c 2d 5d 6d 10d 12d, V 1/2 3/4 7/8 9/10 11/12

## X-ON Electronics

Largest Supplier of Electrical and Electronic Components

*Click to view similar products for [Power to the Board](#) category:*

*Click to view products by [Lumberg](#) manufacturer:*

Other Similar products are found below :

[10131318-08512GRLF](#) [6450171-4](#) [6450552-7](#) [6600323-8](#) [6643429-1](#) [6646040-2](#) [6651939-1](#) [6766604-1](#) [120959-1](#) [1393557-2](#) [1393532-2](#)  
[1393532-3](#) [1393532-4](#) [1393557-1](#) [1600812-5](#) [1-6450861-2](#) [1645595-1](#) [1743490-1](#) [1744132-7](#) [1761122-1](#) [1766169-1](#) [1766250-1](#) [18362](#)  
[1892109-1](#) [1-967627-6](#) [2226808-1](#) [2-6450860-5](#) [2-6450860-6](#) [2-6450870-0](#) [93003-0502](#) [953552-1](#) [1-6450161-4](#) [1-6450850-6](#) [1645526-2](#) [1-](#)  
[6600130-0](#) [1743419-1](#) [1766150-1](#) [2005243-2](#) [211110-1](#) [2-6600130-2](#) [TE34-12-16P-F0](#) [5-6450830-6](#) [5646956-4](#) [36662-0005](#) [40585-3000](#) [4-](#)  
[6450830-9](#) [4-6600333-3](#) [51142-0214](#) [10134048-911LF](#) [10130248-005LF](#)