

M12-Receptacle Connectors In Accordance With IEC 61076-2-101

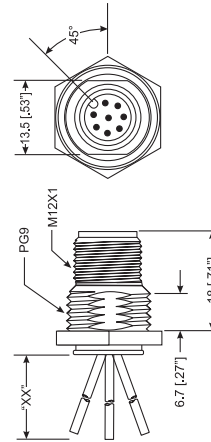
RSF S3103 | RKF S3103



Male, 3-, 4-, 5- and 8-Pole

Receptacle, 3-, 4-, 5- and 8-pole, male, M12 for back mounting, 24 and 22 AWG, panel mount thread PG9.

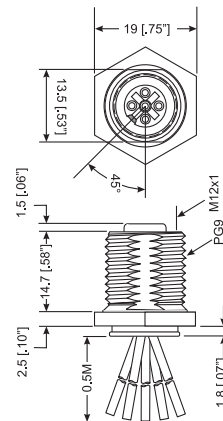
RSF S3103



Female, 3-, 4-, 5- and 8-Pole

Receptacle, 3-, 4-, 5- and 8-pole, female, M12 for back mounting, 24 and 22 AWG, panel mount thread PG9.

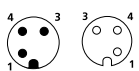
RKF S3103



Pin Assignments

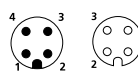
Face Views / M12, Male / Female

3 pole



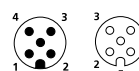
- 1 = brown
- 2 = n.c.
- 3 = blue
- 4 = black

4 pole



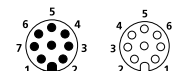
- 1 = brown
- 2 = white
- 3 = blue
- 4 = black

5 pole



- 1 = brown
- 2 = white
- 3 = blue
- 4 = black gray
- 5 = gray

8 pole



- 1 = white
- 2 = brown
- 3 = green
- 4 = yellow
- 5 = grey
- 6 = pink
- 7 = blue
- 8 = red



Be Certain with Belden

M12-Receptacle Connectors In Accordance With IEC 61076-2-101 RSF S3103 | RKF S3103

Technical Data

Environmental

Degree of protection IP 67 / NEMA 6P
 Operating temperature range -25°C (-13°F) / +90°C (+194°F)

Mechanical

Housing Brass, nickel-plated
 Insert PUR, black (female)
 3-, 4- and 5-Pole: Nylon, black (male)
 8-Pole: PUR, black (male)
 Contact Brass, gold over nickel-plated

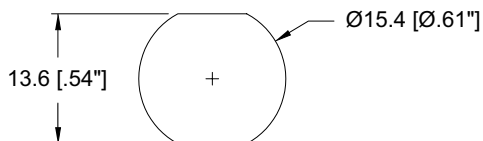
Electrical

Current rating 3-5 Pole: 4 A
 8 Pole: 1.5 A
 Voltage rating 3-4 Pole: 250 V
 5 Pole: 60V
 8 Pole: 30 V / 36 V DC

Accessories

Panel nut (RSKF 9)

Recommended Panel Cutout



Part Number	Pins	Characteristics
RSF 3-S3103/0.5 M RKF 4-3-S3103/0.5 M	3	
RSF 4-S3103/0.5 M RKF 4-S3103/0.5 M	4	
RSF 5-S3103/0.5 M RKF 5-S3103/0.5 M	5	
RSF 8-S3103/0.5 M RKF 8-S3103/0.5 M	8	

X-ON Electronics

Largest Supplier of Electrical and Electronic Components

Click to view similar products for [Sensor Cables / Actuator Cables](#) category:

Click to view products by [Lumberg](#) manufacturer:

Other Similar products are found below :

[60963](#) [60964](#) [703000D02F2002](#) [703000D02F300](#) [703001D02F0602](#) [703001D02F1201](#) [703001D02F300](#) [704000D02F120](#) [773032K02F030](#)
[802027107404-1](#) [802027213811-1](#) [804001A09M150](#) [805001A09M0502](#) [84914-0235](#) [84914-0237](#) [885030A09M020](#) [1200651332](#)
[1200651713](#) [1200660844](#) [1200660845](#) [1200661173](#) [1200680071](#) [1200720053](#) [1200720081](#) [1200720099](#) [1200720217](#) [1200800231](#)
[1200860125](#) [1200870123](#) [1200980102](#) [1200650267](#) [1200650298](#) [1200660183](#) [1200660782](#) [1200660849](#) [1200661295](#) [1200661297](#)
[1200661342](#) [1200661343](#) [1200670080](#) [1200670220](#) [1200680331](#) [1200720252](#) [1200720255](#) [1200730184](#) [1200860344](#) [1200870359](#)
[1200870643](#) [1200980008](#) [1200980031](#)