

M12-Receptacle Connectors In Accordance With IEC 61076-2-101

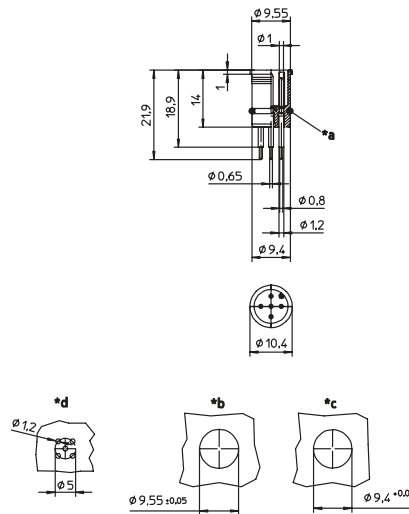
RSEL | RSELP



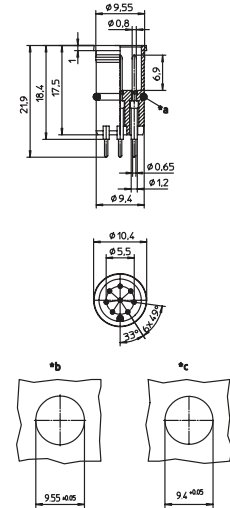
Male, 4-, 5-, and 8-Pole

Receptacle connector, M12 male connector for sensors, solder contacts for printed circuit board mounting.

RSEL



RSEL 8 POLE



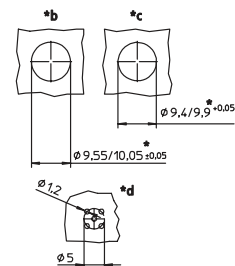
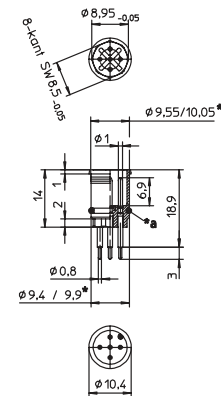
- *a O-ring enclosed separately
- *b ventilation hole
- *c cut out with O-ring
- *d cut out without O-ring



Male, 4- and 8-Pole

Receptacle connector, M12 male connector for sensors, with octagonal shape as antirotation protection, solder contacts for printed circuit board mounting.

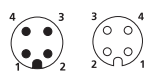
RSELP



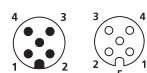
Pin Assignments

Face Views / M12, Male / Female

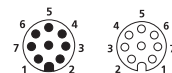
4 pole



5 pole



8 pole





Be Certain with Belden

M12-Receptacle Connectors In Accordance With IEC 61076-2-101
RSEL | RSELP

Technical Data

Environmental

Degree of protection IP 67 / NEMA 6P
Operating temperature range -25°C (-13°F) / +80°C (+194°F)

Mechanical

Insert PA
Contact CuZn, pre-nickel and 0.8 microns gold-plated
O-ring FKM
Mode of connection printed circuit board mount

Electrical

Contact resistance $\leq 5 \text{ m}\Omega$
Nominal current at 40°C
4-5 poles 4 A
8 poles 2 A
Nominal voltage
4 poles 240 V
5 poles 60 V
8 poles 30 V
encapsulated
Rated voltage
4 poles 250 V
5 poles 63 V
8 poles 36 V
Test voltage
4 poles 2.0 kV eff. / 60 s
5-8 poles 1.5 kV eff. / 60 s
Insulation resistance $> 10^9 \Omega$
Pollution degree 3

Part Number	Pins	Characteristics
RSEL 4 RSELP 4	4	 
RSEL 5 RSELP 5	5	 
RSEL 8	8	 

Receptacles

X-ON Electronics

Largest Supplier of Electrical and Electronic Components

Click to view similar products for [Circular Metric Connectors](#) category:

Click to view products by [Lumberg](#) manufacturer:

Other Similar products are found below :

[600X518037X](#) [MA1EAF1200](#) [6STD15PCR99B70A](#) [8R4000A16M020](#) [8R4A00A18M020](#) [8R5000A16M005](#) [1200910008](#) [1200910011](#)
[1300140094](#) [130203-0054](#) [1300150099](#) [RF-12S1N8A90DU](#) [1-3637-600-5205](#) [1612618](#) [8R4006A16M010](#) [8R5006A18A120](#) [1604232](#)
[1R3006A20M005](#) [RF-12P1N8A80DU](#) [RF-12P1N8A90DU](#) [41-01016](#) [41-40011](#) [41-40017](#) [42-01015](#) [4-22279-4](#) [4-22281-1](#) [4-22284-9](#) [43-](#)
[00002](#) [43-01166](#) [41-40005](#) [41-40016](#) [43-00161](#) [43-01191](#) [XS3P-M421-2](#) [600X518050X](#) [SACC-DSI-FS-5P-PG9-L180 SC](#) [8R4006A16A120](#)
[8R4000A16M010](#) [RKC 50/16](#) [1R3004A20A1201](#) [6-22279-3](#) [N03FA03144](#) [1300140077](#) [XS8A-0441](#) [859RD04-103R004](#) [860RD04-113R004](#)
[860RD04-213R004](#) [860-X08-213R004](#) [1-213245-2](#) [2273142-2](#)