

M12-Receptacle Connectors In Accordance With IEC 61076-2-101

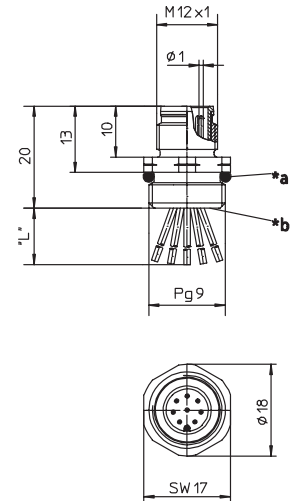
RSF 3...8 | RKF 3...8



Male, 3-, 4-, 5- and 8-Pole

Receptacle, 3-, 4-, 5-, and 8-pole, male, M12 for front mounting, 24 and 22 AWG, panel mount thread PG9.

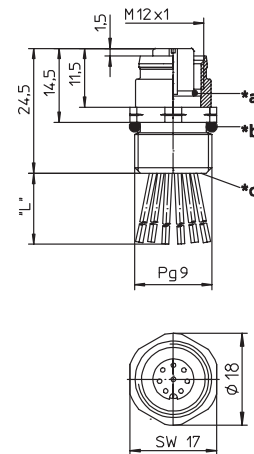
RSF 3...8



Female, 3-, 4-, 5- and 8-Pole

Receptacle, 3-, 4-, 5-, and 8-pole, female, M12 for front mounting, 24 and 22 AWG, panel mount thread PG9.

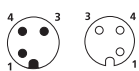
RKF 3...8



Pin Assignments

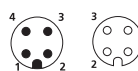
Face Views / M12, Male / Female

3 pole



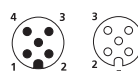
1 = brown
2 = n.c.
3 = blue
4 = black

4 pole



1 = brown
2 = white
3 = blue
4 = black

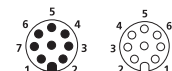
5 pole



1 = brown
2 = white
3 = blue
4 = black
5 = gray

Note for 5 pole receptacles with pin 5 color code of green-yellow see part numbers RSFM 5/0.5M and RKF 5/0.5M

8 pole



1 = white
2 = brown
3 = green
4 = yellow
5 = grey
6 = pink
7 = blue
8 = red



M12-Receptacle Connectors In Accordance With IEC 61076-2-101 RSF 3...8 | RKF 3...8

Technical Data

Environmental

Degree of protection IP 67 / NEMA 6P
 Operating temperature range -40°C (-40°F) / +90°C (+194°F)

Mechanical





Housing Brass, nickel-plated
 Insert PUR, black (female)
 3-, 4- and 5-Pole: Nylon (male)
 8-Pole: PUR, black (male)
 Contact Brass, gold over nickel-plated

Electrical

Current rating 3-5 Pole: 4 A
 8 Pole: 1.5 A
 Voltage rating 3 & 4 Pole: 250 V
 5 Pole: 60V
 8 Pole: 30 V / 36 V DC

Accessories

Panel nut (RSKF 9)

Part Number		Pins	Characteristics
RSF 3/0.5M	RKF 4-3/0.5M	3	
RSF 4/0.5M	RKF 4/0.5M	4	
RSF 5/0.5M	RKF 5/0.5M	5	
RSF 8/0.5M	RKF 8/0.5M	8	

X-ON Electronics

Largest Supplier of Electrical and Electronic Components

Click to view similar products for [Sensor Cables / Actuator Cables](#) category:

Click to view products by [Lumberg](#) manufacturer:

Other Similar products are found below :

[60963](#) [60964](#) [703000D02F2002](#) [703000D02F300](#) [703001D02F0602](#) [703001D02F300](#) [704000D02F120](#) [773032K02F030](#) [802027107404-1](#)
[802027213811-1](#) [804001A09M150](#) [805001A09M0502](#) [84914-0235](#) [84914-0237](#) [885030A09M020](#) [1200651332](#) [1200651713](#) [1200660844](#)
[1200660845](#) [1200661173](#) [1200680071](#) [1200720053](#) [1200720081](#) [1200720099](#) [1200720217](#) [1200800231](#) [1200860125](#) [1200870123](#)
[1200980102](#) [1200650267](#) [1200650298](#) [1200660183](#) [1200660782](#) [1200660849](#) [1200661295](#) [1200661297](#) [1200661342](#) [1200661343](#)
[1200670080](#) [1200670220](#) [1200680331](#) [1200720252](#) [1200730184](#) [1200860344](#) [1200870359](#) [1200870643](#) [1200980008](#) [1200980031](#)
[1210502211](#) [1210400542](#)