

## M12-Receptacle Connectors In Accordance With IEC 61076-2-101

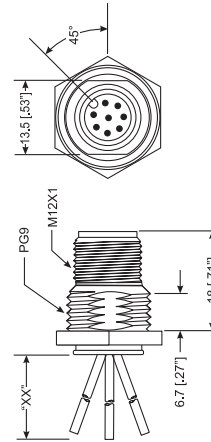
RSF S3103 | RKF S3103



### Male, 3-, 4-, 5- and 8-Pole

Receptacle, 3-, 4-, 5- and 8-pole, male, M12 for back mounting, 24 and 22 AWG, panel mount thread PG9.

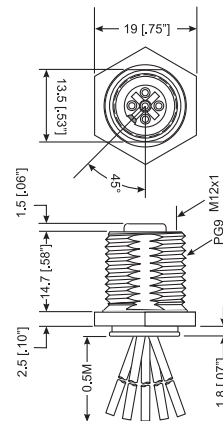
RSF S3103



### Female, 3-, 4-, 5- and 8-Pole

Receptacle, 3-, 4-, 5- and 8-pole, female, M12 for back mounting, 24 and 22 AWG, panel mount thread PG9.

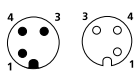
RKF S3103



### Pin Assignments

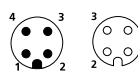
#### Face Views / M12, Male / Female

##### 3 pole



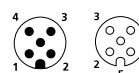
1 = brown  
2 = n.c.  
3 = blue  
4 = black

##### 4 pole



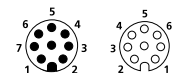
1 = brown  
2 = white  
3 = blue  
4 = black

##### 5 pole



1 = brown  
2 = white  
3 = blue  
4 = black  
5 = gray

##### 8 pole



1 = white  
2 = brown  
3 = green  
4 = yellow  
5 = grey  
6 = pink  
7 = blue  
8 = red



# Be Certain with Belden

## M12-Receptacle Connectors In Accordance With IEC 61076-2-101 RSF S3103 | RKF S3103

### Technical Data

#### Environmental

Degree of protection IP 67 / NEMA 6P  
 Operating temperature range -25°C (-13°F) / +90°C (+194°F)

#### Mechanical

Housing Brass, nickel-plated  
 Insert PUR, black (female)  
 3-, 4- and 5-Pole: Nylon, black (male)  
 8-Pole: PUR, black (male)  
 Contact Brass, gold over nickel-plated

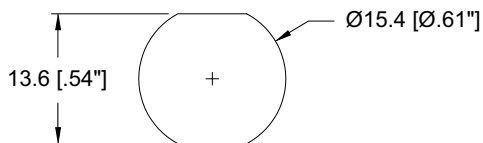
#### Electrical

Current rating 3-5 Pole: 4 A  
 8 Pole: 1.5 A  
 Voltage rating 3-4 Pole: 250 V  
 5 Pole: 60V  
 8 Pole: 30 V / 36 V DC

#### Accessories

Panel nut (RSKF 9)

### Recommended Panel Cutout



Part Number	Pins	Characteristics
RSF 3-S3103/0.5 M    RKF 4-3-S3103/0.5 M	3	
RSF 4-S3103/0.5 M    RKF 4-S3103/0.5 M	4	
RSF 5-S3103/0.5 M    RKF 5-S3103/0.5 M	5	
RSF 8-S3103/0.5 M    RKF 8-S3103/0.5 M	8	

## X-ON Electronics

Largest Supplier of Electrical and Electronic Components

*Click to view similar products for [Sensor Cables / Actuator Cables](#) category:*

*Click to view products by [Lumberg](#) manufacturer:*

Other Similar products are found below :

[60963](#) [60964](#) [M83513/19-F01CP](#) [703000D02F2002](#) [703000D02F300](#) [703001D02F0602](#) [703001D02F300](#) [704000D02F120](#) [773032K02F030](#)  
[802027107404-1](#) [802027213811-1](#) [804001A09M150](#) [805001A09M0502](#) [84914-0235](#) [84914-0237](#) [885030A09M020](#) [1200651332](#)  
[1200651713](#) [1200660844](#) [1200660845](#) [1200661173](#) [1200680071](#) [1200720053](#) [1200720081](#) [1200720099](#) [1200720217](#) [1200800231](#)  
[1200860125](#) [1200870123](#) [1200980102](#) [1200650267](#) [1200650298](#) [1200660183](#) [1200660782](#) [1200660849](#) [1200661295](#) [1200661297](#)  
[1200661342](#) [1200661343](#) [1200670080](#) [1200670220](#) [1200680331](#) [1200720252](#) [1200730184](#) [1200860344](#) [1200870359](#) [1200870643](#)  
[1200980008](#) [1200980031](#) [1210502211](#)