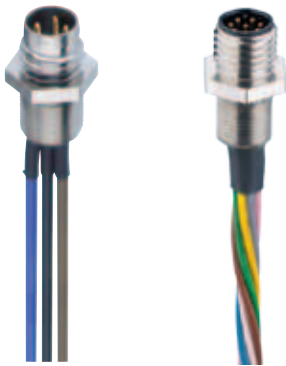


**M8-Receptacle Connectors In Accordance With IEC 61076-2-104**

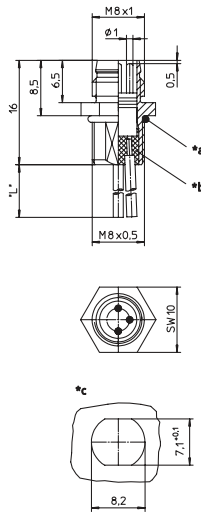
**RSMF/0.5 M | RKMf/0.5 M**



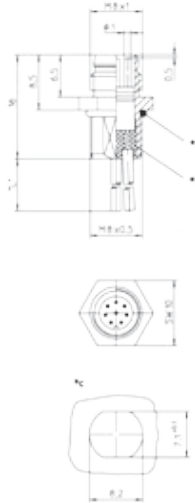
**Male, 3-, 4-, and 8-Pole**

Receptacle connector, M8 male connector for front mounting, assembled stranded wire, solder contacts potted with epoxy, chassis side thread M8 x 0.5 (panel nut RSKF 8).

**RSMF 3/0.5 M**



**RSMF 8/0.5 M**



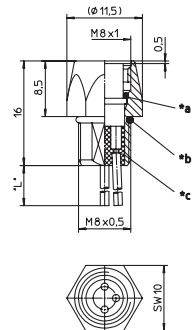
\*a O-ring enclosed separately  
\*b solder contacts potted with epoxy  
\*c cut out  
\*L\* 0.5 m



**Female, 3-, 4-, and 8-Pole**

Receptacle connector, M8 female connector for front mounting, assembled stranded wire, solder contacts potted with epoxy, chassis side thread M8 x 0.5 (panel nut RSKF 8).

**RKMf/0.5 M**

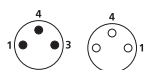


\*d O-Ring  
\*a O-ring enclosed separately  
\*b solder contacts potted with epoxy  
\*c cut out  
\*L\* 0.5 m

**Pin Assignments**

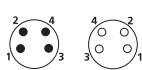
**Face Views**

**M8 - 3 poles**



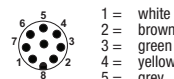
1 = brown  
2 = blue  
4 = black

**M8 - 4 poles**



1 = brown  
2 = white  
3 = blue  
4 = black

**M8 - 8 poles**



1 = white  
2 = brown  
3 = green  
4 = yellow  
5 = grey  
6 = pink  
7 = blue  
8 = red



Be Certain with Belden

**M8-Receptacle Connectors In Accordance With IEC 61076-2-104**  
 RSMF/0.5 M | RKMF/0.5 M

**Technical Data**

**Environmental**

Degree of protection IP 67 / NEMA 6P  
 Operating temperature range -25°C (-13°F) / +80°C (+176°F)

**Mechanical**

Housing / Molded body CuZn, nickel-plated  
 Insert PA  
 Contact CuZn, pre-nickel and 0.8 microns gold-plated  
 O-ring FKM

**Electrical**

Contact resistance RSMF: ≤ 5 mΩ  
 Nominal current at 40°C RSMF 8: 1 A  
 RSMF: 4 A  
 Nominal voltage 60 V  
 RSMF 8: 32 V  
 Test voltage 1.5 kV eff. / 60 s  
 RSMF 8: 0.8 kV eff. / 60 s  
 Insulation resistance > 10<sup>9</sup> Ω  
 Pollution degree 3

Part Number		Pins	Characteristics
RSMF 3/0,5 M	RKMF 3/0,5 M	3	 
RSMF 4/0,5 M	RKMF 4/0,5 M	4	 
RSMF 8/0,5 M		8	 

Receptacles

## X-ON Electronics

Largest Supplier of Electrical and Electronic Components

*Click to view similar products for [Sensor Cables / Actuator Cables](#) category:*

*Click to view products by [Lumberg](#) manufacturer:*

Other Similar products are found below :

[60963](#) [60964](#) [703000D02F2002](#) [703000D02F300](#) [703001D02F0602](#) [703001D02F300](#) [704000D02F120](#) [773032K02F030](#) [802027107404-1](#)  
[802027213811-1](#) [804001A09M150](#) [805001A09M0502](#) [84914-0235](#) [84914-0237](#) [885030A09M020](#) [1200651332](#) [1200651713](#) [1200660844](#)  
[1200660845](#) [1200661173](#) [1200680071](#) [1200720053](#) [1200720081](#) [1200720099](#) [1200720217](#) [1200800231](#) [1200860125](#) [1200870123](#)  
[1200980102](#) [1200650267](#) [1200650298](#) [1200660183](#) [1200660782](#) [1200660849](#) [1200661295](#) [1200661297](#) [1200661342](#) [1200661343](#)  
[1200670080](#) [1200670220](#) [1200680331](#) [1200720252](#) [1200730184](#) [1200860344](#) [1200870359](#) [1200870643](#) [1200980008](#) [1200980031](#)  
[1210502211](#) [1210400542](#)