

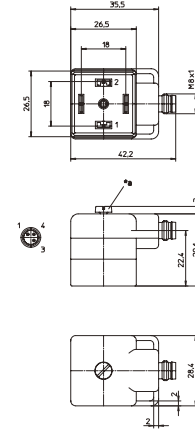
DIN Valve Adapters

VAD 1A...M8 | VB 1A...M8



DIN Valve Adapter with M8 Connection
Valve adaptor according to DIN EN 175301-803, form A, with LED function indicator, varistor voltage protection, connected protective earth, with M8 male receptacle connector.

VAD 1A...M8

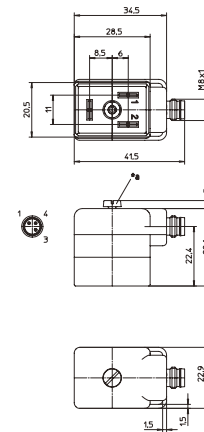


*a M3 screw



DIN Valve Adapter with M8 Connection
Valve adaptor according to DIN EN 175301-803, form B, with LED function indicator, varistor voltage protection, connected protective earth, with M8 male receptacle connector.

VB 1A...M8



*a M3 screw

Pin Assignments

Face Views

VAD 1A-1-3-M8-3

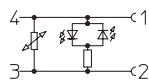


VB 1A-1-2-M8-3

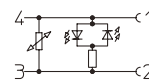


Wiring Diagram

VAD 1A-1-3-M8-3



VB 1A-1-2-M8-3



Be Certain with Belden

DIN Valve Adapters

VAD 1A...M8 | VB 1A...M8

Technical Data

Environmental

Degree of protection IP 67 / NEMA 6P
 Operating temperature range -25°C (-13°F) / +80°C (+176°F)

Mechanical

Housing / Molded body VAD/VB: TPU, self-extinguishing
 M8: CuZn, nickel-plated
 Insert VAD/VB: PBT
 M8: PA
 Contact VAD/VB: CuZn, pre-nickeled and tin-plated
 M8: CuZn, pre-nickeled and 0.8 microns gold-plated

Electrical





Contact resistance $\leq 5 \text{ m}\Omega$
 Nominal current at 40°C 4 A
 Nominal voltage 24 V
 Rated voltage 32 V
 Insulation resistance $> 10^9 \Omega$
 Pollution degree 3

Varistor data

Nominal voltage 47 V at 0.1 mA
 typ. limiting voltage 110 V at 5 A
 max. pulse energy (standard impulse 10/1000us) 0.9 Ws
 max. continuous power loss 0.01 W

Accessories (incl.)

Attachable label
 Screw (fitted)

Part Number	Order Number	Pins	Characteristics
VAD 1A-1-3-M8-3	12142	2	 
VB 1A-1-2-M8-3	12198	2	 

X-ON Electronics

Largest Supplier of Electrical and Electronic Components

Click to view similar products for [Circular Metric Connectors](#) category:

Click to view products by [Lumberg](#) manufacturer:

Other Similar products are found below :

[600X518037X](#) [MA1EAF1200](#) [6STD15PCR99B70A](#) [8R4000A16M020](#) [8R4A00A18M020](#) [8R5000A16M005](#) [1200910008](#) [1200910011](#)
[1300140094](#) [130203-0054](#) [1300150099](#) [RF-12S1N8A90DU](#) [1-3637-600-5205](#) [1612618](#) [8R4006A16M010](#) [8R5006A18A120](#) [1604232](#)
[1R3006A20M005](#) [RF-12P1N8A80DU](#) [RF-12P1N8A90DU](#) [41-01016](#) [41-40011](#) [41-40017](#) [42-01015](#) [4-22279-4](#) [4-22281-1](#) [4-22284-9](#) [43-](#)
[00002](#) [43-01166](#) [41-40005](#) [41-40016](#) [43-00161](#) [43-01191](#) [XS3P-M421-2](#) [600X518050X](#) [SACC-DSI-FS-5P-PG9-L180 SC](#) [8R4006A16A120](#)
[8R4000A16M010](#) [RKC 50/16](#) [1R3004A20A1201](#) [6-22279-3](#) [N03FA03144](#) [1300140077](#) [XS8A-0441](#) [859RD04-103R004](#) [860RD04-113R004](#)
[860RD04-213R004](#) [860-X08-213R004](#) [1-213245-2](#) [2273142-2](#)