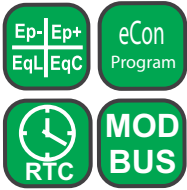


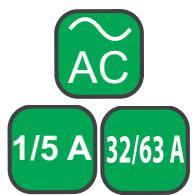
# N27P METER OF NETWORK PARAMETERS

## FEATURES:

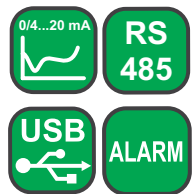


- Measurement of 1-phase network parameters:  
U, I, f, P, Q, S, PF, tg φ, φ, Ep, Eq.
- Universal measuring input:  
- 1/5 A, 100/ 400 V or  
- 32/63 A, 100/400 V.
- Programmable analog output 0/4...20 mA.
- RS485 Modbus RTU Slave interface.
- Programmable current and voltage transformer ratios.
- Meter configuration using button or eCon software (through USB).
- Modern graphical display in OLED technology.

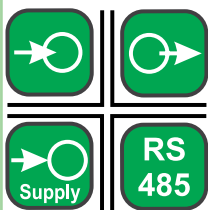
## INPUT:



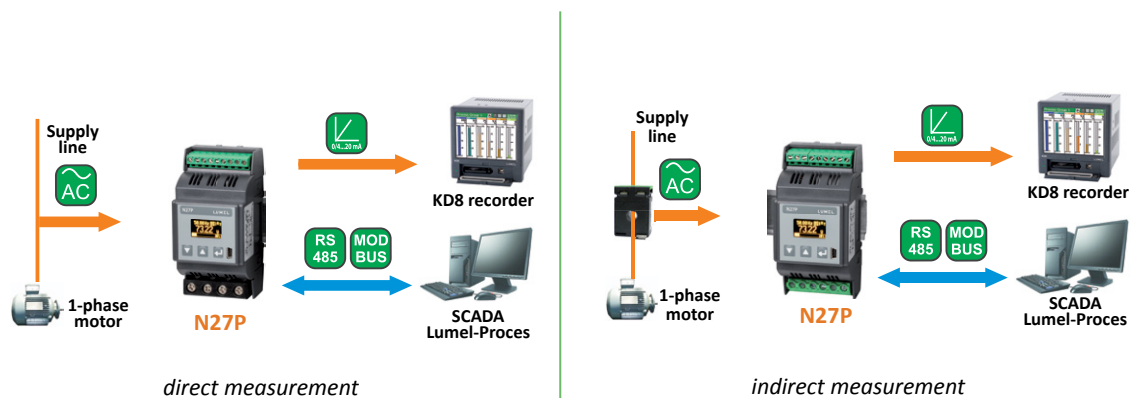
## OUTPUTS:



## GALVANIC ISOLATION:



## EXAMPLE OF APPLICATION



Conversion and recording of current engine load and energy consumption.  
Monitoring of single-phase network parameters.

## MEASURED VALUES AND RANGES

Measured value	Range	Basic error
Current In 1 A 5 A 32 A* 63 A*	0.005 ... 1.200 A~ 0.025 ... 6.000 A~ 0.160 ... 38.40 A~ 0.315 ... 75.60 A~	±0.2%
Voltage L-N 100 V 400 V	5 ... 120 V 20 ... 480 V	±0.2%
Frequency (f)	45.0...66.0...100 Hz	±0.2%
Active power (P) version 1/5 A version 32/63 A	-2.88 kW ... 1.00 W ... 2.88 kW -32.29 kW ... 1.00 W ... 32.29 kW	±0.5%
Reactive power (Q) version 1/5 A version 32/63 A	-2.88 kvar ... 1.00 var ... 2.88 kvar -32.29 kvar ... 1.00 var ... 32.29 kvar	±0.5%
Apparent power (S) version 1/5 A version 32/63 A	1.40 VA ... 2.88 kVA 1.40 VA ... 32.29 kVA	±0.5%
PF	-1...0...1	±0.5%
Tangens φ	-1.2...0...1.2	±1%
φ	0...359	±1%
Active energy (Ep)	0 ... 999 999.9 kWh or 9 999.999 MWh	±0.5%
Reactive energy (Eq)	0 ... 999 999.9 kvarh or 9 999.999 Mvarh	±0.5%

\* - concerns the version for direct measurement

## OUTPUTS

Output type	Properties
Relay	1-2 x (depending on the meter version) programmable relay output, NOC, load capacity 250 V~/0.5 A~, number of cycles 1 x 10 <sup>5</sup>
Analog	lack or 1 x (depending on the meter version) programmable analog output 0/4..20 mA, R <sub>load</sub> = 0...250 Ω

Export department:  
+48 68 45 75 139 / 321 / 276 / 386  
Fax: +48 68 32 54 091  
e-mail: export@lumel.com.pl

LUMEL S.A.  
ul. Sulechowska 1  
65-022 Zielona Góra  
WWW.LUMEL.COM.PL

# N27P METER OF NETWORK PARAMETERS

## DIGITAL INTERFACE

Interface type	Transmission protocol	Mode	Baud rate
RS-485	MODBUS RTU	8N2, 8E1, 8O1, 8N1	4.8; 9.6; 19.2; 38.4; 57.6; 115.2 kbit/s
USB 1.1/ 2.0 (for meter configuration)	MODBUS RTU	8N2	9.6 kbit/s

## EXTERNAL FEATURES

Readout field	OLED display	
Overall dimensions	53 × 110 × 60 mm	mounting on a 35mm DIN rail
Weight	0.2 kg	
Protection grade	for housing: IP40	for terminals: IP00

## RATED OPERATING CONDITIONS

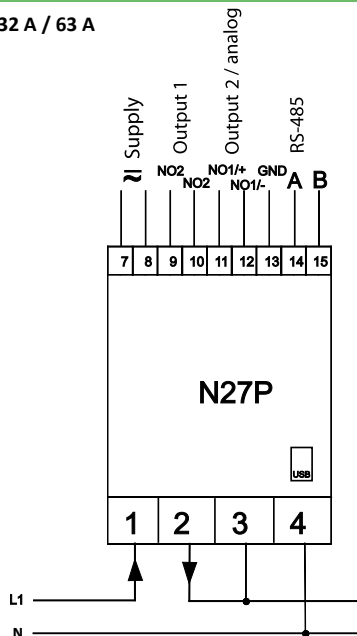
Power supply	85...253 V a.c. 40...400 Hz; / 90...300 V d.c.	Power consumption: in supply circuit ≤ 5 VA in voltage circuit ≤ 0.2 VA in current circuit: for undirect meas. ≤ 0.05 VA, for direct meas. ≤ 2.5 VA
Temperature	ambient: -10...23...55°C	storage: -30...70°C
Relative humidity	25 ... 95%	inadmissible condensation
Working position	vertical	
Standard conversion time	1.2 s	
Maximal conversion time	2.2 s	
Preheating time	15 min	
External magnetic field	0...40... 400 A/m	
Short duration overload (1 s)	voltage input: 2 U <sub>N</sub> (max. 1000 V)	current input: 10 I <sub>N</sub>
Sustained overload	voltage: 1,2 U <sub>N</sub>	current: 1,2 I <sub>N</sub>

## SAFETY AND COMPATIBILITY REQUIREMENTS

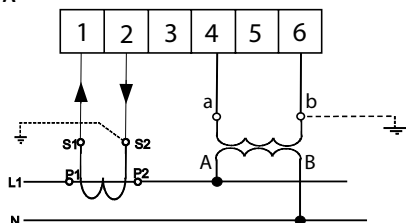
Electromagnetic compatibility	noise immunity	acc. to EN 61000-6-2
	noise emissions	acc. to EN 61000-6-4
Isolation between circuits	basic	acc. to EN 61010-1
Pollution level	2	
Installation category	III (for voltages above 300 V – category II)	
Maximal phase-to-earth working voltage	- for supply circuits 300 V - for measuring input 600 V – cat. II (300 V – cat. III) - for other circuits 50 V	
Altitude above sea level	< 2000 m	

## CONNECTION DIAGRAM

range 32 A / 63 A



range 1 A / 5 A



## ORDERING

	N27P -	X	X	XX	X	X
<b>Current measuring range:</b>						
1 A / 5 A a.c.		1				
32 A / 63 A a.c.		2				
<b>Outputs:</b>						
2 relays			1			
1 relay and 1 analog 0/4...20mA			2			
<b>Version:</b>						
standard				00		
custom-made*				XX		
<b>Language:</b>						
Polish					P	
English					E	
other*					X	
<b>Acceptance tests:</b>						
without extra quality requirements						0
with an extra quality inspection certificate						1
acc. to customer's requirements*						X

\* after agreeing with the manufacturer

### Example of order:

The code: **N27P - 1 1 00 E 0** means:

- N27P** - meter of network parameters N27P type
- 1** - version for indirect measurement for the range 1A/5A
- 1** - with 2 relay outputs
- 00** - standard version
- E** - user's manual in English
- 0** - without extra quality requirements.

For more information about LUMEL's products please visit our website:  
[www.lumel.com.pl](http://www.lumel.com.pl)

### Export department:

+48 68 45 75 139 / 321 /  
276 / 386  
Fax: +48 68 32 54 091  
e-mail: [export@lumel.com.pl](mailto:export@lumel.com.pl)

LUMEL S.A.  
ul. Sulechowska 1  
65-022 Zielona Góra  
[WWW.LUMEL.COM.PL](http://WWW.LUMEL.COM.PL)

## X-ON Electronics

Largest Supplier of Electrical and Electronic Components

*Click to view similar products for [Digital Panel Meters](#) category:*

*Click to view products by [LUMEL](#) manufacturer:*

Other Similar products are found below :

[M00558-00](#) [01.098.1658.1](#) [70.360.4828.0](#) [72331-00](#) [85310-25](#) [86427-26](#) [86642-00](#) [87268-13](#) [87316-00](#) [87719-26](#) [98107-56](#) [HB8260-R36-90](#) [DMS-20ACV-3-R-C](#) [EM11DINAV81XR1X](#) [25.325.3253.1](#) [25.325.4253.1](#) [25.330.0453.1](#) [25.350.0553.0](#) [20046-20](#) [20182-23](#) [AP1020](#) [AP1021](#) [25.320.5053.0](#) [25.350.3453.1](#) [25.394.3653.1](#) [25.521.3253.0](#) [28006-01](#) [04.630.1080.0](#) [20078-20](#) [EM11DINAV81XO1X](#) [85874-26](#) [87166-00](#) [87895-00](#) [28000-03](#) [K3GN-NDT1-FLK 24VDC](#) [82322K-11](#) [86641-00](#) [87004-00](#) [MV15-DC-20V-110V-CU](#) [HB8260R4890](#) [20125-21](#) [86640-00](#) [2CMA100166R1000](#) [N27D 00M0](#) [DMG 100](#) [DMG 110](#) [DMG 800 L01](#) [DMK 01](#) [DMK 01 R1](#) [DMK 11](#)