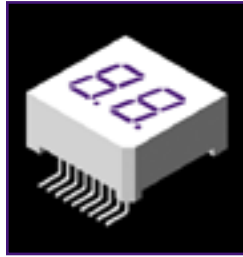


Single and Dual Digit



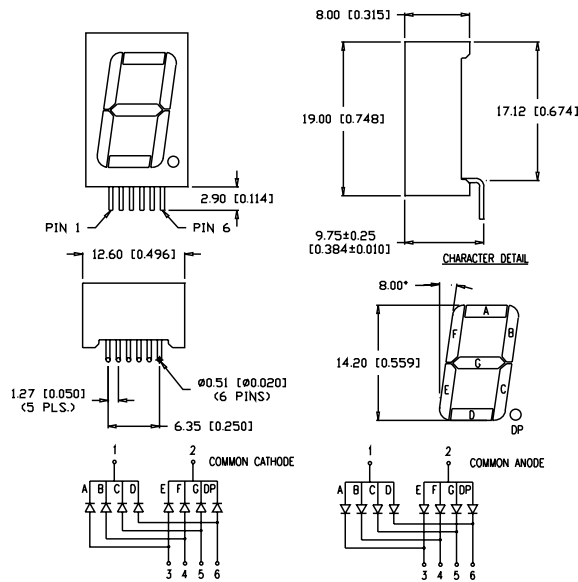
Features/Options

- ▶ Standard and high brightness chips
- ▶ Custom sizes at minimal cost
- ▶ Right angle pins eliminate expensive sockets
- ▶ Intensity grading available at chip level

Applications/Uses

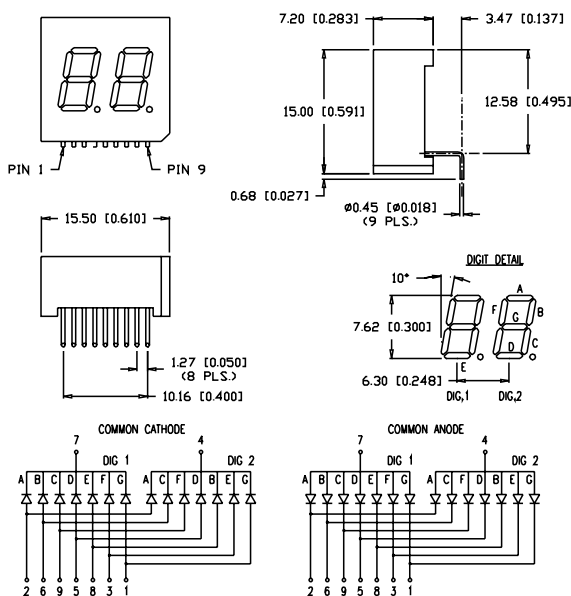
- ▶ Test instruments
- ▶ Diagnostic equipment
- ▶ Instrument and control panels
- ▶ Monitoring displays

0.56" single digit



Part Number	Wave Length (nm)	Brightness (μcd @ 10mA)	Vf (typ) 10mA	Vf (max) 10mA	Emitted Color	Polarity (column)
LDS-M512RI-RA	565	2500	2.2	2.6	Green	Anode
LDS-M514RI-RA	635	2500	2.0	2.5	Red	Anode
LDS-M516RI-RA	660	8000	1.7	2.2	Red	Anode
LDS-M512RI-RA-SUG	574	7000	2.2	2.6	Green	Anode
LDS-M514RI-RA-SI	636	15,000	2.0	2.6	Red	Anode
LDS-M517RI-RA-USB	470	6000	3.5	4.0	Blue	Anode
LDS-N512RI-RA	565	2500	2.2	2.6	Green	Cathode
LDS-N514RI-RA	635	2500	2.0	2.5	Red	Cathode
LDS-N516RI-RA	660	8000	1.7	2.2	Red	Cathode
LDS-N512RI-RA-SUG	574	7000	2.2	2.6	Green	Cathode
LDS-N514RI-RA-SI	636	15,000	2.0	2.6	Red	Cathode
LDS-N517RI-RA-USB	470	6000	3.5	4.0	Blue	Cathode

0.30" dual digit



Part Number	Wave Length (nm)	Brightness (μcd @ 10mA)	Vf (typ) 10mA	Vf (max) 10mA	Emitted Color	Polarity (column)
LDD-E302NI-RA	565	2500	2.2	2.6	Green	Anode
LDD-E304NI-RA	635	2500	2.0	2.5	Red	Anode
LDD-E306NI-RA	660	8000	1.7	2.2	Red	Anode
LDD-E302NI-RA-SUG	574	7000	2.2	2.6	Green	Anode
LDD-E304NI-RA-SI	636	15,000	2.0	2.6	Red	Anode
LDD-E307NI-RA-USB	470	6000	3.5	4.0	Blue	Anode
LDD-F302NI-RA	565	2500	2.2	2.6	Green	Cathode
LDD-F304NI-RA	635	2500	2.0	2.5	Red	Cathode
LDD-F306NI-RA	660	8000	1.7	2.2	Red	Cathode
LDD-F302NI-RA-SUG	574	7000	2.2	2.6	Green	Cathode
LDD-F304NI-RA-SI	636	15,000	2.0	2.6	Red	Cathode
LDD-F307NI-RA-USB	470	6000	3.5	4.0	Blue	Cathode



USA/Canada 1-800-278-5666
Asia +886-3-5821124



www.lumex.com



USA/Canada 1-847-359-8904
Asia +886-3-5821154

1
2
3
4
5
6
7
8
9
10
11
12
13
14
15
16
17
18
19
20
21
22
23
24
25
26
27
28
29

X-ON Electronics

Largest Supplier of Electrical and Electronic Components

Click to view similar products for [LED Displays & Accessories](#) category:

Click to view products by [Lumex](#) manufacturer:

Other Similar products are found below :

[LTC-4624JD](#) [LTC-4627WC](#) [LTC-571P](#) [LTM-8522G](#) [LTP-4323P](#) [LTP-747G](#) [LTS-3361JG-06](#) [1668](#) [HT-F196NB-5323](#) [IPD2131-27](#) [SA03-12EWA](#) [LDQ-N514RI](#) [LDS-A3506RD](#) [LDS-A3926RI](#) [SC03-12HDB](#) [SI-B9T151550WW](#) [SI-B9V171550WW](#) [SLC-3PF-WL](#) [SLDN-32M-G1624](#) [LTC-2621JD](#) [LTC-2623WC](#) [LTC-4627JD](#) [LTD-322G](#) [LTD-482PC](#) [LTP-1057AHR](#) [LTP-1457AKR](#) [LTP-3784G-01](#) [LTS-313AP](#) [LTS-4812SKR-P](#) [LTS-547AE](#) [LTS-6780P](#) [446010401-3](#) [HV-7W30-6829](#) [DA43-11GWA](#) [LDD-A516RI-17](#) [LDD-E305RI](#) [LDQ-N3402RI](#) [LDQ-N3606RI](#) [LDT-M2804RI](#) [86004CB830](#) [LTP-3862JD](#) [LTP-2088AKD](#) [LTD-6740P](#) [LTS-6880Y](#) [LDS-SMC3002RISUGTR](#) [LTC-2623E](#)
[CC25-12YWA](#) [LDM-6432-P3-UR-1](#) [SR420312N/32](#)