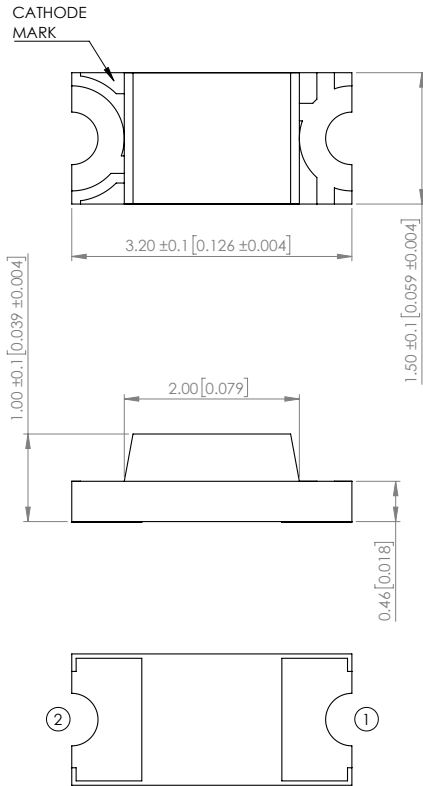
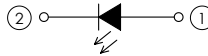


| PART NUMBER | | SML-LX1206SOC-TR | REV | J |
|-------------------------------------|---------------------------|------------------|-----|----------|
| REV | E.C.N. NUMBER | SML-LX1206SOC-TR | | DATE |
| E.C.N. NUMBER AND REVISION COMMENTS | | | | |
| A | E.C.N. #10805. | | | 11.02.01 |
| B | E.C.N. #10814. | | | 12.03.01 |
| C | E.C.N. #10967. | | | 03.14.03 |
| D | E.C.N. #11148. | | | 01.20.05 |
| E | E.C.N. #11466. | | | 01.07.08 |
| F | E.C.N. #11508. | | | 03.09.09 |
| G | E.C.N. #11644. | | | 08.03.10 |
| H | E.C.N. #10BRDR & REDRAWN. | | | 04.20.11 |
| I | E.C.N. #11829. | | | 08.07.12 |
| J | ECN-Lumex201700113 | | | 11.14.17 |



POLARITY



ELECTRO-OPTICAL CHARACTERISTIC TA=25°C

| PARAMETER | MIN | TYP | MAX | UNITS | TEST COND |
|--------------------|-------------|-----|-----|-------------|-----------|
| PEAK WAVELENGTH | - | 621 | - | nm | If=20mA |
| FORWARD VOLTAGE | - | 2.0 | 2.4 | Vf | If=20mA |
| REVERSE CURRENT | - | - | 10 | uA | Vr=5V |
| LUMINOUS INTENSITY | - | 39 | - | mcd | If=20mA |
| VIEWING ANGLE | - | 130 | - | 2x theta1/2 | - |
| EMITTED COLOR | ORANGE | | | | |
| EPOXY LENS FINISH | WATER CLEAR | | | | |

ABSOLUTE MAXIMUM RATINGS TA=25°C

| PARAMETER | MAX | UNITS |
|-------------------------|------------------|-------|
| PEAK FORWARD CURRENT* | 60 | mA |
| FORWARD CURRENT | 25 | mA |
| REVERSE VOLTAGE | 5 | V |
| POWER DISSIPATION | 60 | mW |
| STORAGE TEMPERATURE | -40 TO +90 | °C |
| OPERATING TEMPERATURE | -40 TO +85 | °C |
| SOLDERING TEMPERATURE** | 3 SEC. MAX @ 260 | °C |

*t<10us

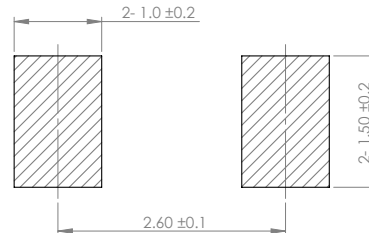
**2.0mm FROM BODY.

NOTE:

1. RoHS COMPLIANT.
2. COMPLIANCE WITH EU REACH.
3. COMPLIANCE Halogen Free .
(Br <900 ppm ,Cl <900 ppm , Br+Cl < 1500 ppm)

**MOISTURE SENSITIVE DEVICE
PER JEDEC LEVEL 3 STANDARDS**

RECOMMENDED SOLDER PAD LAYOUT



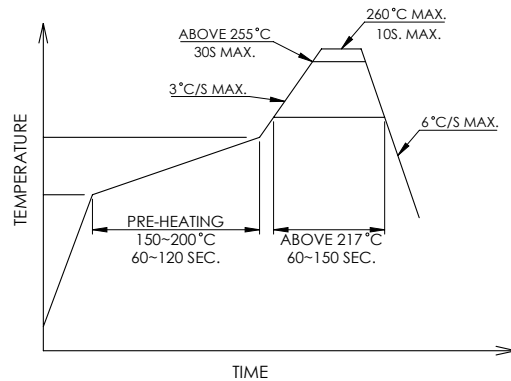
*UNLESS OTHERWISE SPECIFIED TOLERANCES PER DECIMAL PRECISION ARE: X=±1 (±0.039), X.X=±0.5 (±0.020), X.XX=±0.25 (±0.010), X.XXX=±0.127 (±0.005), LEAD SIZE=±0.05 (±0.002), LEAD LENGTH=±0.75 (±0.030), MIN= ^{±0.00} _{0.00} DECIMAL PRECISION, MAX= ^{±0.00} _{0.00} DECIMAL PRECISION

LUMEX
Creating LED and LCD Solutions Together™

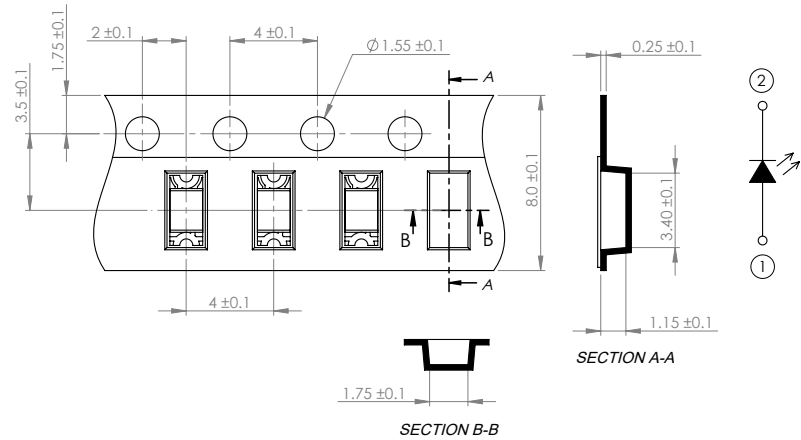
425 N. GARY AVE.
CAROL STREAM, IL 60188
PHONE : 800-278-5666
FAX : 630-315-2150
WEB : WWW.LUMEX.COM

| | | |
|--|-------------------|-----------------|
| 3.2(L)*1.5(W)*1.0(H)mm, PCB SURFACE MOUNT TOP VIEW LED, 621nm ORANGE, WATER CLEAR LENS, TAPE & REEL | DATE : 2017.11.14 | DRAWN BY : C.C. |
| **THE SPECIFICATIONS MAY CHANGE AT ANY TIME WITHOUT NOTICE DUE TO NEW MATERIALS OR PRODUCT IMPROVEMENT.** | PAGE : 1 OF 2 | CHKD BY : G.Y. |
| CONFIDENTIAL INFORMATION THE INFORMATION CONTAINED IN THIS DOCUMENT IS THE PROPERTY OF LUMEX INC. EXCEPT AS SPECIFICALLY AUTHORIZED IN WRITING BY LUMEX INC., THE HOLDER OF THIS DOCUMENT SHALL KEEP ALL INFORMATION CONTAINED HEREIN CONFIDENTIAL AND SHALL PROTECT SAME IN WHOLE OR IN PART FROM DISCLOSURE AND DISSEMINATION TO ALL THIRD PARTIES. | SCALE : NTF | APRVD BY : E.C. |
| | UNIT : mm [INCH] | |

PROFILE



CARRIER TAPE DIMENSION



*UNLESS OTHERWISE SPECIFIED TOLERANCES PER DECIMAL PRECISION ARE: X=±1 (±0.039), X.X=±0.5 (±0.020), X.XX=±0.25 (±0.010), X.XXX=±0.127 (±0.005). LEAD SIZE=±0.05 (±0.002), LEAD LENGTH=±0.75 (±0.030). MIN= ^{±0.00}/_{0.00} DECIMAL PRECISION MAX= ^{±0.00}/_{0.00} DECIMAL PRECISION



425 N. GARY AVE.
 CAROL STREAM, IL 60188
 PHONE : 800-278-5666
 FAX : 630-315-2150
 WEB : WWW.LUMEX.COM

3.2(L)*1.5(W)*1.0(H)mm, PCB SURFACE MOUNT TOP VIEW LED, 621nm ORANGE, WATER CLEAR LENS, TAPE & REEL

****THE SPECIFICATIONS MAY CHANGE AT ANY TIME WITHOUT NOTICE DUE TO NEW MATERIALS OR PRODUCT IMPROVEMENT.****

CONFIDENTIAL INFORMATION
 THE INFORMATION CONTAINED IN THIS DOCUMENT IS THE PROPERTY OF LUMEX INC. EXCEPT AS SPECIFICALLY AUTHORIZED IN WRITING BY LUMEX INC., THE HOLDER OF THIS DOCUMENT SHALL KEEP ALL INFORMATION CONTAINED HEREIN CONFIDENTIAL AND SHALL PROTECT SAME IN WHOLE OR IN PART FROM DISCLOSURE AND DISSEMINATION TO ALL THIRD PARTIES.

| | |
|-------------------|-----------------|
| DATE : 2017.11.14 | DRAWN BY : C.C. |
| PAGE : 2 OF 2 | CHKD BY : G.Y. |
| SCALE : NTF | APRVD BY : E.C. |
| UNIT : mm [INCH] | |

X-ON Electronics

Largest Supplier of Electrical and Electronic Components

Click to view similar products for [Standard LEDs - SMD category](#):

Click to view products by [Lumex manufacturer](#):

Other Similar products are found below :

[LTST-C190KYKT](#) [LTST-C19GD2WT](#) [LTST-N683GBEW](#) [LTW-170ZDC](#) [LTW-M140SZS40](#) [598-8110-100F](#) [598-8170-100F](#) [598-8610-202F](#) [67-22VRVGC/TR8](#) [AAAF5060QBFSEEZGS](#) [HLMP-6305-L0011](#) [ALMD-LB36-SV002](#) [APT1608QGW](#) [15-21UYC/S530-A3/TR8](#) [EAST2012YA0](#) [EASV1803BA0](#) [LG M67K-H1J2-24-0-2-R18-Z](#) [LS A676-P2S1-1](#) [SML310BATT86](#) [SML-LX0606SISUGC/A](#) [SML-LXL1307SRC-TR](#) [SML-LXR851SIUPGUBC](#) [LT1ED53A](#) [FAT801-S](#) [AM27ZGC03](#) [APB3025SGNC](#) [APFA3010SURKCGKQBDC](#) [APHK1608VGCA](#) [APT2012QGW](#) [LTST-C250KGKT](#) [LTW-010DCG](#) [LTW-020ZDCG](#) [LTW-21TS5](#) [LTW-220DS5](#) [LY L29K-H1J2-26](#) [JANTXM19500/521-02](#) [UYGT801-S](#) [42-21UYC/S530-A3/TR8](#) [YGFR411-H](#) [598-8330-117F](#) [SML-LX0402IC-TR](#) [CMDA20AYAA7D1S](#) [CMDA16AYDR7A1X](#) [598-8040-100F](#) [598-8070-100F](#) [598-8140-100F](#) [598-8610-200F](#) [EAST2012GA0](#) [EAPL3527GA5](#) [EASV3020YGA0](#)