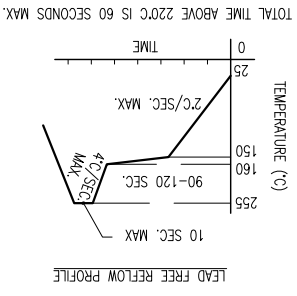
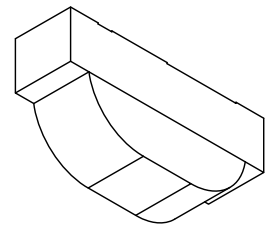
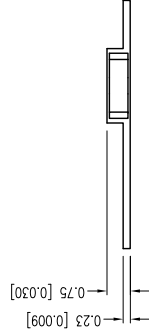
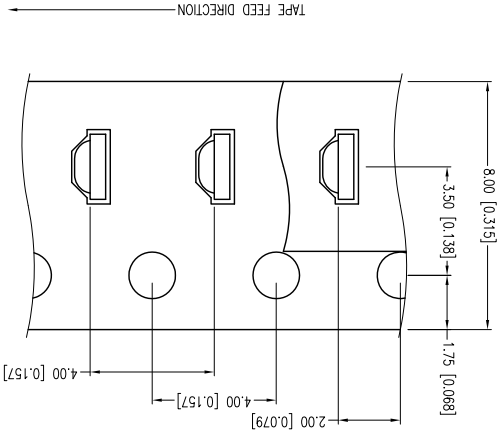
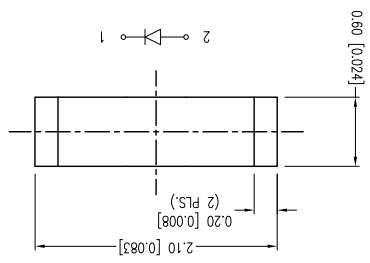
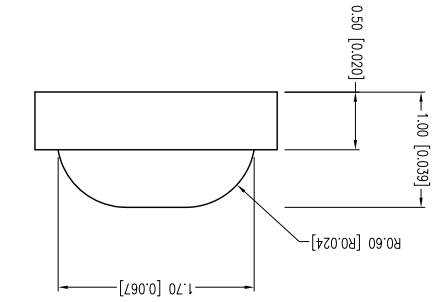
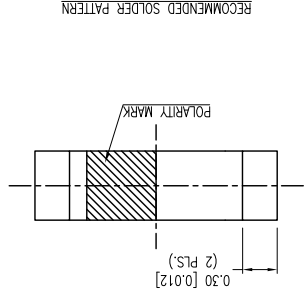
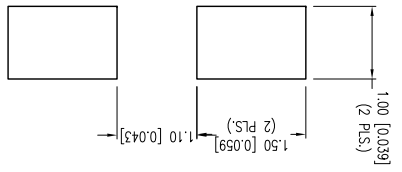


DATE: 08.19.13	DRAWN BY: MA
PAGE: 1 OF 1	CHKD BY: KF
SCALE: NTS	APRD BY: KF
UNIT: mm [INCH]	

0.6mm x 2.1mm SMT LED RIGHT ANGLE, 460nm BLUE LED, WATER CLEAR LENS.
 THE SPECIFICATIONS MAY CHANGE AT ANY TIME WITHOUT NOTICE DUE TO NEW MATERIALS OR PRODUCT IMPROVEMENT.
 CONFIDENTIAL INFORMATION
 THE INFORMATION CONTAINED IN THIS DOCUMENT IS THE PROPERTY OF LUMEX INC. EXCEPT AS SPECIFICALLY AUTHORIZED IN WRITING BY LUMEX INC., THE HOLDER OF THIS DOCUMENT SHALL KEEP ALL INFORMATION CONTAINED HEREIN CONFIDENTIAL AND SHALL PROTECT SAME IN WHOLE OR IN PART FROM DISCLOSURE AND DISSEMINATION TO ALL THIRD PARTIES.

UNLESS OTHERWISE SPECIFIED TOLERANCES PER DECIMAL PRECISION ARE: X=±1 (±0.039), XX=±0.5 (±0.020), XXX=±0.127 (±0.005), LEAD SIZE=±0.05 (±0.002), LEAD LENGTH=±0.75 (±0.030), MIN=-0.00
 +DECIMAL PRECISION MAX.=+0.00
 -DECIMAL PRECISION



CAUTION: STATIC SENSITIVE DEVICE
 FOLLOW PROPER E.S.D. HANDLING PROCEDURES
 WHEN WORKING WITH THIS PART.

CAUTION: MOISTURE SENSITIVE DEVICE
 PER JEDEC LEVEL 3 STANDARDS

LIMITS OF SAFE OPERATION AT 25°C

PARAMETER	UNITS	MAX	MIN
PEAK FORWARD CURRENT*	mA	150	
STEADY CURRENT	mA	30	
POWER DISSIPATION	mW	120	
DERATE FROM 25°C	mW/°C	-1.2	
OPERATING TEMP.	°C	-40 TO +85	
STORAGE TEMP.	°C	-40 TO +85	
			* t<10µs

ELECTRO-OPTICAL CHARACTERISTICS Ta=25°C If=20mA

PARAMETER	UNITS	TEST COND	MIN	TYP	MAX
PEAK WAVELENGTH	nm		460		
FORWARD VOLTAGE	Vf	If=100µA	3.3		4.0
REVERSE VOLTAGE	Vr			5.0	
AXIAL INTENSITY	mcad	If=20mA	80		120
VIEWING ANGLE	2x theta				
EMITTED COLOR:			BLUE		
LENS FINISH:			WATER CLEAR		

X-ON Electronics

Largest Supplier of Electrical and Electronic Components

Click to view similar products for [Standard LEDs - SMD category](#):

Click to view products by [Lumex manufacturer](#):

Other Similar products are found below :

[LTST-C19GD2WT](#) [LTST-N683GBEW](#) [597-3006-607F](#) [597-3403-607F](#) [LTW-K140SZR40](#) [LTW-M140ZVS](#) [598-8110-100F](#) [598-8170-100F](#)
[598-8610-202F](#) [7012X7](#) [AAAF5060QBFSEEZGS](#) [12-22SURSYGC/S530-A3/E2/TR8](#) [1383SURT/S530-A3/TR1\(R\)](#) [APT1608QGW](#)
[EASV1803BA0](#) [SML310BATT86](#) [SML-512VWT86A](#) [SML-LX0606SISUGC/A](#) [SML-LXL1307SRC-TR](#) [SML-LXR851SIUPGUBC](#)
[LT1ED53A](#) [17-21/G6C-FM1N2B/3T](#) [FAT801-S](#) [SSL-LXA227IC-TR31A](#) [AM27ZGC03](#) [APB3025SGNC](#) [APHK1608VGCA](#) [APT2012QGW](#)
[CLMVC-FKA-CA1E1L81BB7C3C3](#) [CLYBA-FKA-CFHHL9BBB7A363](#) [CMD11504UR](#) [LTW-020ZDCG](#) [LTW-21TS5](#) [LTW-K140SZR30](#)
[HSMY-C177](#) [UYGT801-S](#) [KVH1C100MF6R](#) [42-21SYGC/S530-E1/TR8](#) [YGFR411-H](#) [597-2311-402F](#) [597-2712-602F](#) [5973212407NF](#)
[597-3302-607F](#) [597-5202-407F](#) [598-8330-117F](#) [SAW8WA2A-L35M40-CA](#) [SML013WBDW1](#) [SML-LX0402IC-TR](#) [CLMVC-FKA-](#)
[CLBDGL7LBB79353](#) [VLMKG3400-GS08](#)