

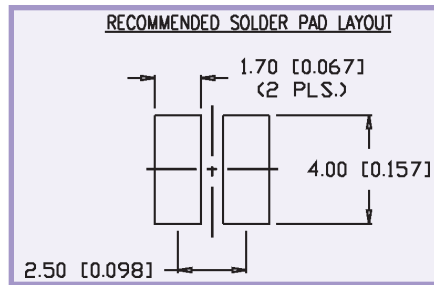
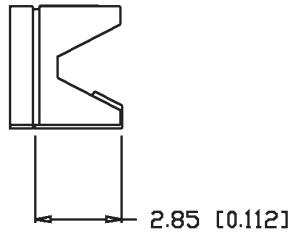
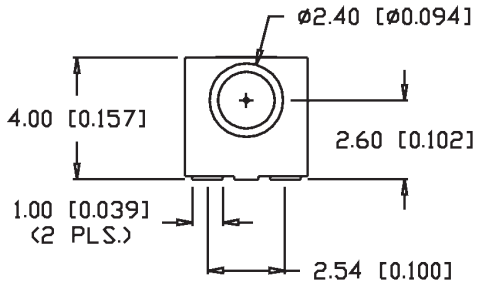
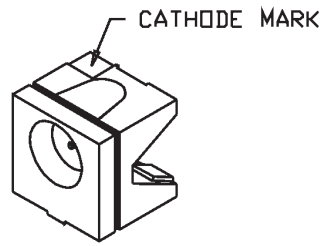
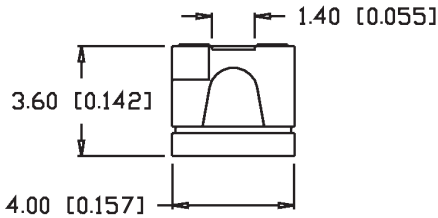
# SMT LEDs ~ Right Angle ~ Molded Carrier



1  
2  
3  
4  
5  
6  
7  
8  
9  
10  
11  
12  
13  
14  
15  
16  
17  
18  
19  
20  
21  
22  
23  
24  
25  
26  
27  
28  
29

## SML-LXR44XC-TR

Right Angle SMT Molded Carrier



### Features/Options

- ▶ Molded Package with 2.6 mm Chip Center Off-Board
- ▶ State-of-the-Art LED Die (All Colors)
- ▶ High Volume Capacity Production
- ▶ Focused Light Emission and Reflection
- ▶ Increased Power/Solder
- ▶ Heat Dissipation Over PCB Carrier Types

### Applications/Uses

- ▶ Keyboard/Keypad Illumination
- ▶ Display or Character Backlighting
- ▶ Status or Fault Indicators
- ▶ Motion Control Circuits
- ▶ Medical Diagnostic Instruments

## SML-LXR44 Package Style - Standard Brightness

Right Angle SMT Molded Carrier

| Lumex Part Number | Die Material | Emitted Color      | Peak (nm) | Lens  | Axial Intensity @ If=20mA | V <sub>f</sub> Typ @ If=20mA | V <sub>f</sub> Max @ If=20mA | View Angle° 2θ | Reel Size (pcs) | Reflow Profile Pg. 134 | Tape Specs Pg. 134 |
|-------------------|--------------|--------------------|-----------|-------|---------------------------|------------------------------|------------------------------|----------------|-----------------|------------------------|--------------------|
| SML-LXR44GC-TR    | GaP          | Green              | 565       | Clear | 25                        | 2.2                          | 2.6                          | 90             | 500             | Figure 3               | Figure B           |
| SML-LXR44IC-TR    | GaAsP        | High Intensity Red | 635       | Clear | 25                        | 2.0                          | 2.5                          | 90             | 500             | Figure 3               | Figure B           |
| SML-LXR44YC-TR    | GaAsP        | Yellow             | 585       | Clear | 9                         | 2.1                          | 2.5                          | 90             | 500             | Figure 3               | Figure B           |

## X-ON Electronics

Largest Supplier of Electrical and Electronic Components

*Click to view similar products for [Standard LEDs - SMD category](#):*

*Click to view products by [Lumex manufacturer](#):*

Other Similar products are found below :

[LTST-C190KYKT](#) [LTST-C19GD2WT](#) [LTST-N683GBEW](#) [LTW-170ZDC](#) [LTW-M140SZS40](#) [598-8110-100F](#) [598-8170-100F](#) [598-8610-202F](#) [67-22VRVGC/TR8](#) [AAAF5060QBFSEEZGS](#) [HLMA-QG00-S0021](#) [HLMP-6305-L0011](#) [ALMD-LB36-SV002](#) [APT1608QGW](#) [15-21UYC/S530-A3/TR8](#) [EAST2012YA0](#) [EASV1803BA0](#) [LG M67K-H1J2-24-0-2-R18-Z](#) [LS A676-P2S1-1](#) [SML310BATT86](#) [SML-LX0606SISUGC/A](#) [SML-LXL1307SRC-TR](#) [SML-LXR851SIUPGUBC](#) [LT1ED53A](#) [FAT801-S](#) [AM27ZGC03](#) [APB3025SGNC](#) [APFA3010SURKCGKQBDC](#) [APHK1608VGCA](#) [APT2012QGW](#) [LTST-C250KGKT](#) [LTW-010DCG](#) [LTW-020ZDCG](#) [LTW-21TS5](#) [LTW-220DS5](#) [LY L29K-H1J2-26](#) [JANTXM19500/521-02](#) [UYGT801-S](#) [42-21UYC/S530-A3/TR8](#) [LO T67F-V1AB-24-1](#) [YGFR411-H](#) [598-8330-117F](#) [SML-LX0402IC-TR](#) [CMDA20AYAA7D1S](#) [CMDA16AYDR7A1X](#) [598-8040-100F](#) [598-8070-100F](#) [598-8140-100F](#) [598-8610-200F](#) [EAST2012GA0](#)