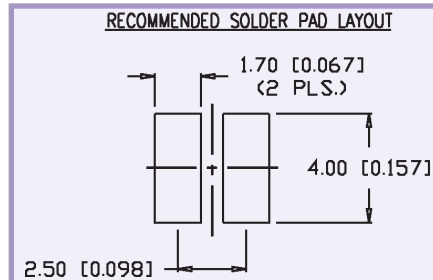
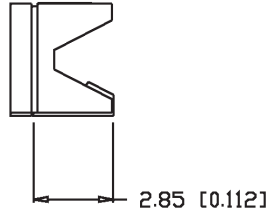
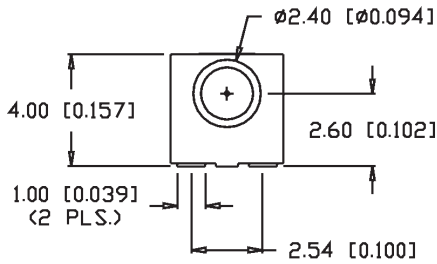
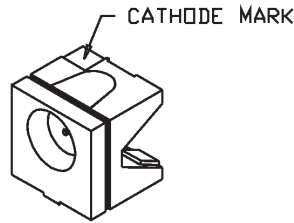
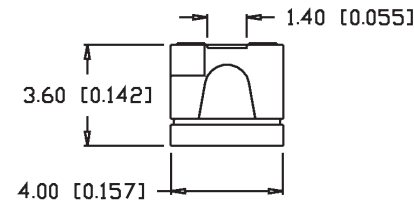


# SMT LEDs ~ Right Angle ~ Molded Carrier



## SML-LXR44XC-TR

Right Angle SMT Molded Carrier



### Features/Options

- ▶ Molded Package with 2.6 mm Chip Center Off-Board
- ▶ State-of-the-Art LED Die (All Colors)
- ▶ High Volume Capacity Production
- ▶ Focused Light Emission and Reflection
- ▶ Increased Power/Solder
- ▶ Heat Dissipation Over PCB Carrier Types

### Applications/Uses

- ▶ Keyboard/Keypad Illumination
- ▶ Display or Character Backlighting
- ▶ Status or Fault Indicators
- ▶ Motion Control Circuits
- ▶ Medical Diagnostic Instruments

## SML-LXR44 Package Style - Super Bright

Right Angle SMT Molded Carrier

Lumex Part Number	Die Material	Emitted Color	Peak (nm)	Lens	Axial Intensity @ If=20mA	V <sub>f</sub> Typ @ If=20mA	V <sub>f</sub> Max @ If=20mA	View Angle° 2θ	Reel Size (pcs)	Reflow Profile Pg. 134	Tape Specs Pg. 134
SML-LXR44SIC-TR	AlInGaP	Super High Intensity Red	636	Clear	170	2.0	2.6	90	500	Figure 3	Figure B
SML-LXR44SOC-TR	AlInGaP	Super Orange	610	Clear	170	2.0	2.5	90	500	Figure 3	Figure B
SML-LXR44SRC-TR	GaAlAs	Super Red	660	Clear	80	1.7	2.2	90	500	Figure 3	Figure B
SML-LXR44SUGC-TR	AlInGaP	Super Ultra Green	574	Clear	210	2.2	2.6	90	500	Figure 3	Figure B
SML-LXR44SYC-TR	AlInGaP	Super Yellow	590	Clear	200	2.0	2.5	90	500	Figure 3	Figure B

## SML-LXR44 Package Style - Ultra Bright and White

Right Angle SMT Molded Carrier

Lumex Part Number	Die Material	Emitted Color	Peak (nm)	Lens	Axial Intensity @ If=20mA	Chromaticity Coordinates		V <sub>f</sub> Typ @ If=20mA	V <sub>f</sub> Max @ If=20mA	View Angle° 2θ	Reel Size (pcs)	Reflow Profile Pg. 134	Tape Specs Pg. 134
						X	Y						
SML-LXR44USBC-TR	InGaN	Ultra Super Blue	470	Clear	170	-	-	3.5	4.0	120	500	Figure 3	Figure B
SML-LXR44UPGC-TR	InGaN	Ultra Pure Green	525	Clear	150	-	-	3.5	4.0	120	500	Figure 3	Figure B
SML-LXR44UWC-TR	InGaN	Ultra White	-	Clear	120	0.33	0.34	3.5	4.0	90	500	Figure 3	Figure B



USA/Canada 1-800-278-5666  
Asia +886-3-5821124



[www.lumex.com](http://www.lumex.com)



USA/Canada 1-847-359-8904  
Asia +886-3-5821154

1  
2  
3  
4  
5  
6  
7  
8  
9  
10  
11  
12  
13  
14  
15  
16  
17  
18  
19  
20  
21  
22  
23  
24  
25  
26  
27  
28  
29

## X-ON Electronics

Largest Supplier of Electrical and Electronic Components

*Click to view similar products for [Standard LEDs - SMD category](#):*

*Click to view products by [Lumex manufacturer](#):*

Other Similar products are found below :

[LTST-C190KYKT](#) [LTST-C19GD2WT](#) [LTST-N683GBEW](#) [LTW-170ZDC](#) [LTW-M140SZS40](#) [598-8110-100F](#) [598-8170-100F](#) [598-8610-202F](#) [67-22VRVGC/TR8](#) [AAAF5060QBFSEEZGS](#) [HLMA-QG00-S0021](#) [HLMP-6305-L0011](#) [ALMD-LB36-SV002](#) [APT1608QGW](#) [15-21UYC/S530-A3/TR8](#) [EAST2012YA0](#) [EASV1803BA0](#) [LG M67K-H1J2-24-0-2-R18-Z](#) [LS A676-P2S1-1](#) [SML310BATT86](#) [SML-LX0606SISUGC/A](#) [SML-LXL1307SRC-TR](#) [SML-LXR851SIUPGUBC](#) [LT1ED53A](#) [FAT801-S](#) [AM27ZGC03](#) [APB3025SGNC](#) [APFA3010SURKCGKQBDC](#) [APHK1608VGCA](#) [APT2012QGW](#) [LTST-C250KGKT](#) [LTW-010DCG](#) [LTW-020ZDCG](#) [LTW-21TS5](#) [LTW-220DS5](#) [LY L29K-H1J2-26](#) [UYGT801-S](#) [42-21UYC/S530-A3/TR8](#) [LO T67F-V1AB-24-1](#) [YGFR411-H](#) [598-8330-117F](#) [SML-LX0402IC-TR](#) [CMDA20AYAA7D1S](#) [CMDA16AYDR7A1X](#) [598-8040-100F](#) [598-8070-100F](#) [598-8140-100F](#) [598-8610-200F](#) [EAST2012GA0](#) [EAPL3527GA5](#)