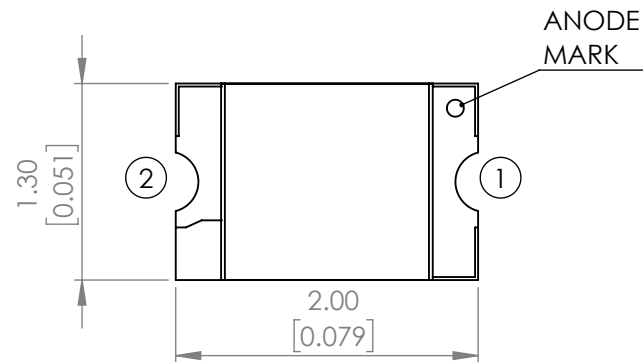
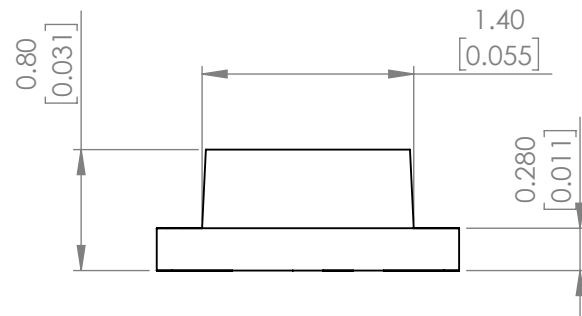
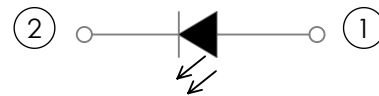


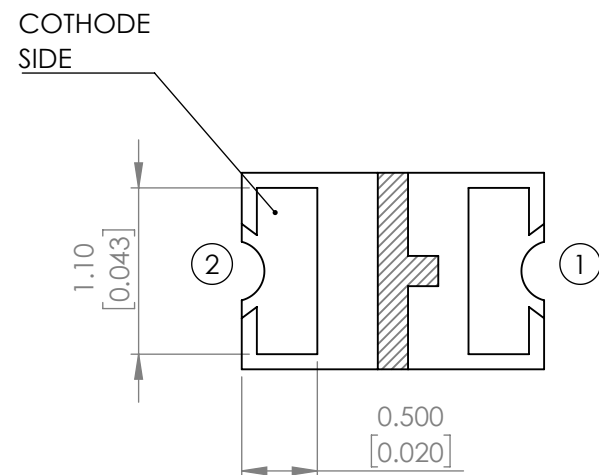
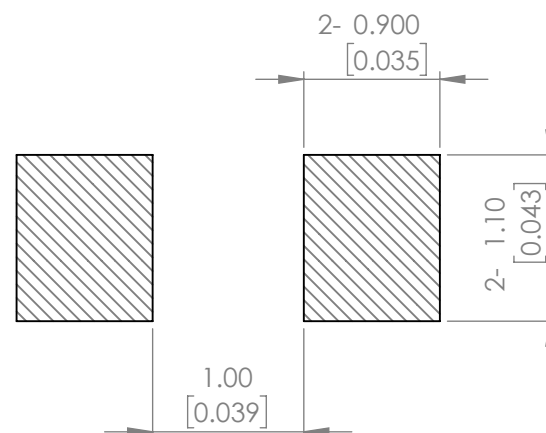
|                    |  |                   |            |             |
|--------------------|--|-------------------|------------|-------------|
| <b>PART NUMBER</b> |  | SML-LXT0805SRW-TR | <b>REV</b> | I           |
| <b>REV</b>         | <b>E.C.N. NUMBER AND REVISION COMMENTS</b> |                   |            | <b>DATE</b> |
| A                  | E.C.N #10567.                              |                   |            | 12.08.99    |
| B                  | E.C.N #10695.                              |                   |            | 01.08.01    |
| C                  | E.C.N #10814.                              |                   |            | 02.25.02    |
| D                  | E.C.N #10967.                              |                   |            | 03.22.04    |
| E                  | E.C.N #11248.                              |                   |            | 08.12.05    |
| F                  | E.C.N #11368.                              |                   |            | 11.21.06    |
| G                  | E.C.N #11508.                              |                   |            | 09.30.09    |
| H                  | ECN-Lumex201800045                         |                   |            | 03.07.18    |
| I                  | ECN-Lumex201900133                         |                   |            | 12.17.19    |



**POLARITY**



**RECOMMENDED SOLDER PAD LAYOUT**



**ELECTRO-OPTICAL CHARACTERISTIC TA=25°C**

| PARAMETER          | MIN                  | TYP | MAX | UNITS       | TEST COND |
|--------------------|----------------------|-----|-----|-------------|-----------|
| PEAK WAVELENGTH    | -                    | 655 | -   | nm          | If=20mA   |
| FORWARD VOLTAGE    | -                    | 1.8 | 2.4 | Vf          | If=20mA   |
| REVERSE CURRENT    | -                    | -   | 10  | uA          | Vr=5V     |
| LUMINOUS INTENSITY | -                    | 11  | -   | mcd         | If=20mA   |
| VIEWING ANGLE      | -                    | 130 | -   | 2x theta1/2 | -         |
| EMITTED COLOR      | RED                  |     |     |             |           |
| EPOXY LENS FINISH  | MILKY WHITE DIFFUSED |     |     |             |           |

**ABSOLUTE MAXIMUM RATINGS TA=25°C**

| PARAMETER             | MAX         | UNITS |
|-----------------------|-------------|-------|
| PEAK FORWARD CURRENT* | 40          | mA    |
| FORWARD CURRENT       | 20          | mA    |
| REVERSE VOLTAGE       | 5           | V     |
| POWER DISSIPATION     | 48          | mW    |
| STORAGE TEMPERATURE   | -40 TO +100 | °C    |
| OPERATING TEMPERATURE | -40 TO +85  | °C    |

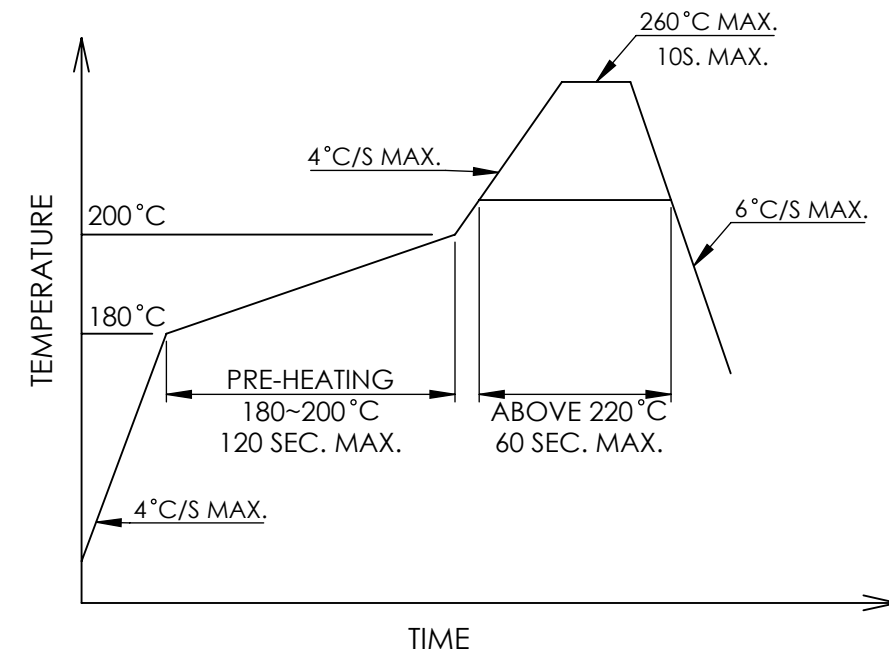
\*t<10us

\*\*2.0mm FROM BODY.

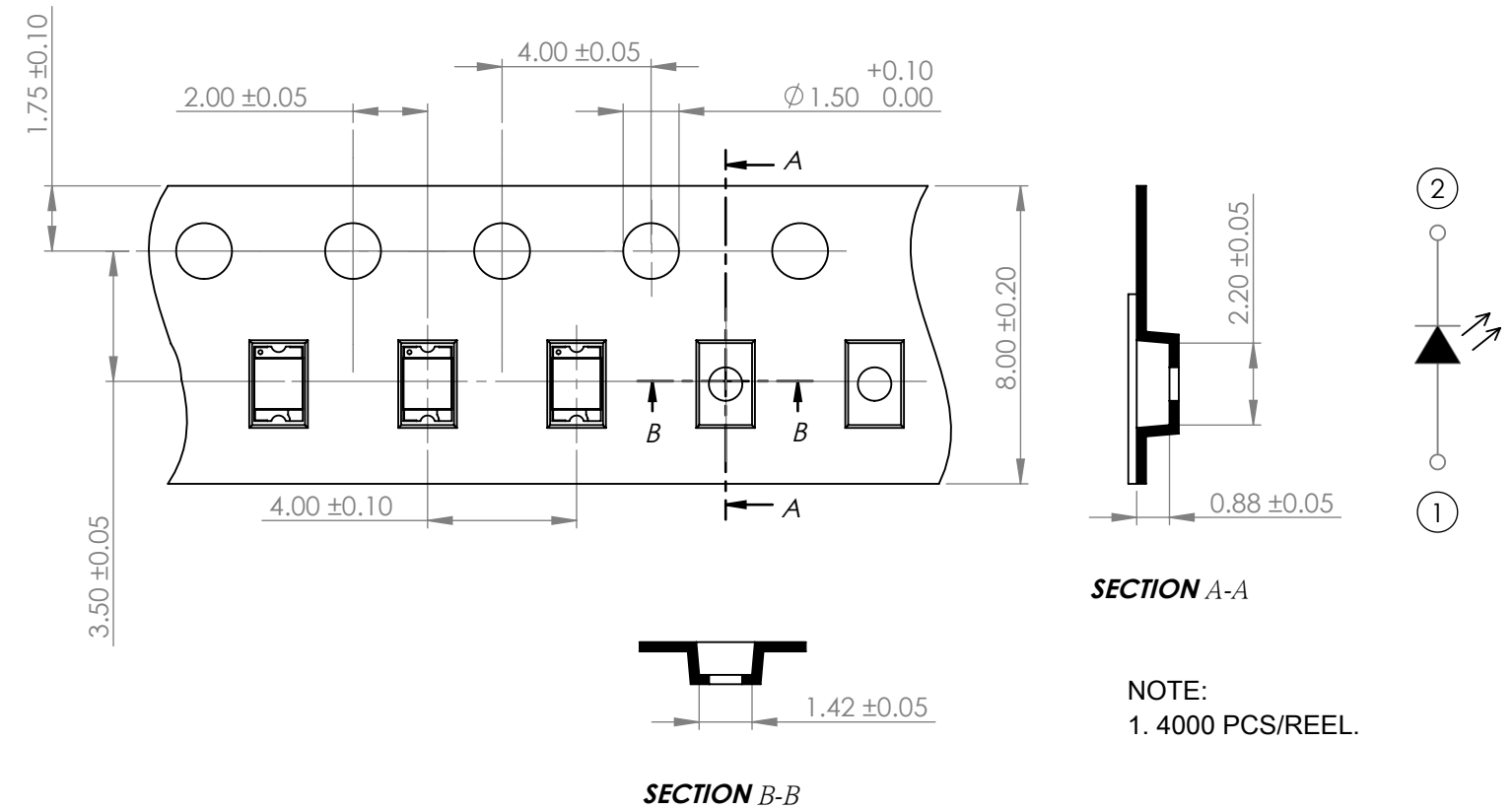
MOISTURE SENSITIVE DEVICE  
PER JEDEC LEVEL 2a STANDARDS

\*UNLESS OTHERWISE SPECIFIED TOLERANCES PER DECIMAL PRECISION ARE: X=±1 (±0.039), X.X=±0.5 (±0.020), X.XX=±0.25 (±0.010), X.XXX=±0.127 (±0.005). LEAD SIZE=±0.05 (±0.002), LEAD LENGTH=±0.75 (±0.030). MIN= <sup>+DECIMAL PRECISION</sup>/<sub>-0.00</sub> MAX= <sup>+0.00</sup>/<sub>-DECIMAL PRECISION</sub>

**PROFILE**



**CARRIER TAPE DIMENSION**



**SECTION A-A**

**SECTION B-B**

NOTE:  
1. 4000 PCS/REEL.

\*UNLESS OTHERWISE SPECIFIED TOLERANCES PER DECIMAL PRECISION ARE: X=±1 (±0.039), X.X=±0.5 (±0.020), X.XX=±0.25 (±0.010), X.XXX=±0.127 (±0.005). LEAD SIZE=±0.05 (±0.002), LEAD LENGTH=±0.75 (±0.030). MIN= <sup>+DECIMAL PRECISION</sup>/<sub>-0.00</sub> MAX.= <sup>+0.00</sup>/<sub>-DECIMAL PRECISION</sub>

**LUMEX**  
Creating LED and LCD Solutions Together™

425 N. GARY AVE.  
CAROL STREAM, IL 60188  
PHONE : 800-278-5666  
FAX : 630-315-2150  
WEB : WWW.LUMEX.COM

2.00(L)\*1.30(W)\*0.8(H), THIN PCB SURFACE MOUNT LED, 655nm AlGaAs SUPER RED, MILKY WHITE DIFFUSED, TAPE & REEL.

**\*\*THE SPECIFICATIONS MAY CHANGE AT ANY TIME WITHOUT NOTICE.\*\***

CONFIDENTIAL INFORMATION  
THE INFORMATION CONTAINED IN THIS DOCUMENT IS THE PROPERTY OF LUMEX INC. EXCEPT AS SPECIFICALLY AUTHORIZED IN WRITING BY LUMEX INC., THE HOLDER OF THIS DOCUMENT SHALL KEEP ALL INFORMATION CONTAINED HEREIN CONFIDENTIAL AND SHALL PROTECT SAME IN WHOLE OR IN PART FROM DISCLOSURE AND DISSEMINATION TO ALL THIRD PARTIES.

|                   |                 |
|-------------------|-----------------|
| DATE : 2019.12.17 | DRAWN BY : C.S. |
| PAGE : 2 OF 2     | CHKD BY : E.C.  |
| SCALE : NTF       | APRVD BY : G.Y. |
| UNIT : mm [INCH]  | (Pb)            |

## X-ON Electronics

Largest Supplier of Electrical and Electronic Components

*Click to view similar products for [Standard LEDs - SMD category](#):*

*Click to view products by [Lumex manufacturer](#):*

Other Similar products are found below :

[LTST-C190KYKT](#) [LTST-C19GD2WT](#) [LTST-N683GBEW](#) [LTW-170ZDC](#) [LTW-M140SZS40](#) [598-8110-100F](#) [598-8170-100F](#) [598-8610-202F](#) [67-22VRVGC/TR8](#) [AAAF5060QBFSEEZGS](#) [HLMA-QG00-S0021](#) [HLMP-6305-L0011](#) [ALMD-LB36-SV002](#) [APT1608QGW](#) [15-21UYC/S530-A3/TR8](#) [EAST2012YA0](#) [EASV1803BA0](#) [LG M67K-H1J2-24-0-2-R18-Z](#) [LS A676-P2S1-1](#) [SML310BATT86](#) [SML-LX0606SISUGC/A](#) [SML-LXL1307SRC-TR](#) [SML-LXR851SIUPGUBC](#) [LT1ED53A](#) [FAT801-S](#) [AM27ZGC03](#) [APB3025SGNC](#) [APFA3010SURKCGKQBDC](#) [APHK1608VGCA](#) [APT2012QGW](#) [LTST-C250KGKT](#) [LTW-010DCG](#) [LTW-020ZDCG](#) [LTW-21TS5](#) [LTW-220DS5](#) [LY L29K-H1J2-26](#) [UYGT801-S](#) [42-21UYC/S530-A3/TR8](#) [LO T67F-V1AB-24-1](#) [YGFR411-H](#) [598-8330-117F](#) [SML-LX0402IC-TR](#) [CMDA20AYAA7D1S](#) [CMDA16AYDR7A1X](#) [598-8040-100F](#) [598-8070-100F](#) [598-8140-100F](#) [598-8610-200F](#) [EAST2012GA0](#) [EAPL3527GA5](#)