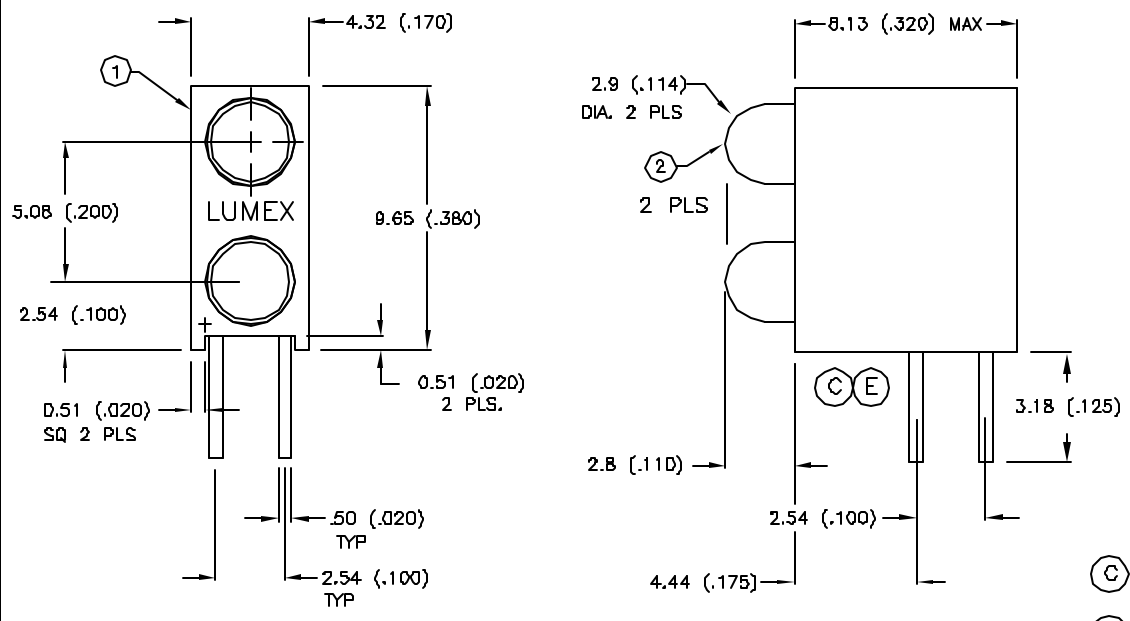


DATE	REVISIONS	REV
8-30-93	CHG'D LEAD LENGTH/	A
7-14-94	CHG'D SOLDER SPECS/	B
8-16-94	CHG'D HOLDER BOTTOM & SAFE OP. SPECS.	C
11-29-94	UPDATED SPECS./	D
2-9-95	CHG'D. HOLDER BOTTOM./	E
10-9-95	REF ECN 10100./	F
2-6-96	REF ECN 10104./	G

DRAWING NUMBER	REV
SSF-LXH240YGYGW	G

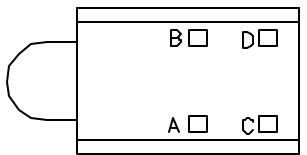
ELECTRO-OPTICAL CHARACTERISTICS TA=25 °C If=20mA

PARAMETER	MIN	TYP	MAX	UNITS	TEST COND
PEAK WAVELENGTH		585 (YELLOW)		nm	
		565 (GREEN)		nm	
FORWARD VOLTAGE (Y/G)		2.1	2.8	V <sub>f</sub>	
REVERSE VOLTAGE	N/A			V <sub>r</sub>	I <sub>r</sub> =100uA
AXIAL INTENSITY (Y/G)		8.0		mcd	I <sub>f</sub> =20mA
VIEWING ANGLE		80		2x theta	
EMITTED COLOR:	YELLOW/GREEN				
EPOXY LENS FINISH:	MILKY WHITE DIFFUSED				



PIN-OUT

- A. BICOLOR LED - YELLOW ANODE
- B. BICOLOR LED - GREEN ANODE
- C. BICOLOR LED - YELLOW ANODE
- D. BICOLOR LED - GREEN ANODE



(D) LIMITS OF SAFE OPERATION AT 25 DEG. C

PARAMETER	MAX	UNITS
PEAK FORWARD CURRENT (Y/G)*	150/150	mA
STEADY CURRENT (Y/G)	30/25	mA
POWER DISSIPATION (Y/G)	105/105	mW
DERATE FROM 25 °C	-1.2	mW/°C
(C) OPERATING, STORAGE TEMP.	-40 TO +85	°C
LEAD SOLDERING TEMP.	+260	°C
(B) 2.0mm FROM BODY		3 SEC. MAX

\* t<10µs

BILL OF MATERIALS:

1. SSH-LXH240 HOLDER. MATERIAL: BLACK NYLON 94V-0.
2. SSL-LX3044YGW LED (2 PIECES).

RELIABILITY NOTE

OUR MANY YEARS OF EXPERIENCE DATA ACCUMULATION INDICATE THAT SOLDER HEAT IS A MAJOR CAUSE OF EARLY AND FUTURE FAILURE. PLEASE PAY ATTENTION TO YOUR SOLDERING PROCESS.

<b>LUMEX</b> OPTO COMPONENTS INC.	282 E. HELLEN ROAD PALATINE, ILLINOIS 60067 (708) 359-2790		
--------------------------------------	--	--	--

CONFIDENTIAL INFORMATION  
THE INFORMATION CONTAINED IN THIS DOCUMENT IS THE PROPERTY OF LUMEX OPTO COMPONENTS, INC. EXCEPT AS SPECIFICALLY AUTHORIZED IN WRITING BY LUMEX OPTO COMPONENTS, INC. THE HOLDER OF THIS DOCUMENT SHALL KEEP ALL INFORMATION CONTAINED HEREIN CONFIDENTIAL AND SHALL PROTECT SAME IN WHOLE OR IN PART FROM DISCLOSURE AND DISSEMINATION TO ALL THIRD PARTIES.

DATE: 1-19-93	DWN:	CHK'D:	APPD:
SCALE: N/A			

T-3mm LED, RIG TANGLE FAULT INDICATOR, BICOLOR UPPER & LOWER, MILKY WHITE EPOXY

PAGE 1 OF 1	DRAWING NUMBER SSF-LXH240YGYGW	REV G
-------------	-----------------------------------	----------

## X-ON Electronics

Largest Supplier of Electrical and Electronic Components

*Click to view similar products for [LED Circuit Board Indicators](#) category:*

*Click to view products by [Lumex](#) manufacturer:*

Other Similar products are found below :

[568-0701-841F](#) [LTL-4221NH129](#) [LTL-42DGNMHDP1](#) [HLMP1521101](#) [HLMP1523802F](#) [HLMP1700101F](#) [HLMP1700104F](#) [BHA-1564-G](#)  
[SMF-HM1530YD-305](#) [SSF-LXH409SYSUGW](#) [AM2520EHSGD](#) [HLMP1301104F](#) [HLMP1385101F](#) [HLMP1421101](#) [HLMP1503103F](#)  
[HLMP1503104F](#) [HLMP1700102F](#) [HLMP1700106F](#) [HLMP1700107F](#) [HLMP1790101F](#) [HLMP1790103F](#) [LTL-4211NHBP](#) [5390H3](#) [5390H5](#)  
[551-2802F](#) [552-0794-810F](#) [553-0222-812F](#) [HT3-BC-T](#) [564-0700-831F](#) [WP59BLGEW](#) [103-3101-1231-403](#) [5502407811F](#) [550-3007-810F](#)  
[551-3307MF](#) [552080-1](#) [573-2399-100F](#) [592-2020-302F](#) [5932-927-2701-3F](#) [SMF-HM1530SRD-509](#) [SSF-LXH100MID](#) [SSF-](#)  
[LXH2103SRSRDRP](#) [SSF-LXH555USBW](#) [WP937SB/4YGW](#) [WP937EB2EGW](#) [HT3-BLU-T](#) [551-0312-802F](#) [553-0110-802F](#) [561-5501-050F](#)  
[6202T3-5VLC](#) [MV60538MP7](#)