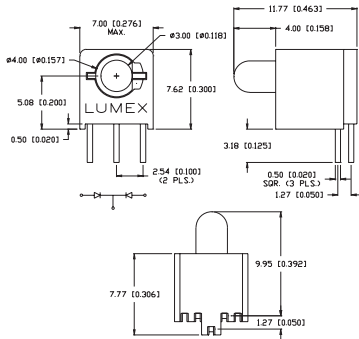




## SSF-LXH409 Series

## T-3mm 3-Leaded, Single Level, Bi-Color, Offset Cathode Lead



### FEATURES / OPTIONS

- ▶ State-of-the-Art, Chip Technology
- ▶ Easy Drop-In Board Installation
- ▶ Right Angle to the Board Position
- ▶ Choice of Colors and Lens Finishes
- ▶ Low Current Versions Available
- ▶ Color or Intensity Sorting Available
- ▶ Blinking LED
- ▶ With Internal Resistor for 5V and 12V Operation
- ▶ Black or Gray Holders for High Contrast
- ▶ Common Anode Version

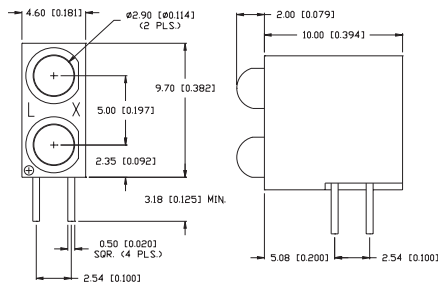
### APPLICATIONS / USES

- ▶ Board Level Status Indicators
- ▶ Board Level Fault Indicators
- ▶ Circuit Troubleshooting Indicators
- ▶ Warning/Alarm Lights
- ▶ Backlighting of Overlays
- ▶ Post Lighting Switches and Keypads

Lumex Part Number	Die Material	Emitted Color	Peak (nm)	Lens	Operating Current (mA)	Operating TYP. Vf (V)	Brightness TYP. Mcd	@ mA	View Angle° 2θ	Component LED Used
SSF-LXH409SISUGW	AllnGaP	Super High Intensity Red	636	Milky White	5-25	2	350	20	60	SSL-LX3059SISUGW
	AllnGaP	Super Ultra Green	574	Diffused	5-25	2.2	130	20		
SSF-LXH409SISYW	AllnGaP	Super High Intensity Red	636	Milky White	5-25	2	250	20	60	SSL-LX3059SISYW
	AllnGaP	Super Yellow	590	Diffused	5-25	2	250	20		
SSF-LXH409SYSUGW	AllnGaP	Super Yellow	590	Milky White	5-25	2	250	20	60	SSL-LX3059SYSUGW
	AllnGaP	Super Ultra Green	574	Diffused	5-25	2.2	80	20		

## SSF-LXH2103XX/2 Series

## T-3mm Dual Tower, 0.2" Leadframe Offset, 2mm Protrusion



### FEATURES / OPTIONS

- ▶ State-of-the-Art, Chip Technology
- ▶ Easy Drop-In Board Installation
- ▶ Right Angle to the Board Position
- ▶ Choice of Colors and Lens Finishes
- ▶ Low Current Versions Available
- ▶ Color or Intensity Sorting Available
- ▶ Blinking LED
- ▶ With Internal Resistor for 5V and 12V Operation
- ▶ Black or Gray Holders for High Contrast
- ▶ Color Combinations

### APPLICATIONS / USES

- ▶ Board Level Status Indicators
- ▶ Board Level Fault Indicators
- ▶ Circuit Troubleshooting Indicators
- ▶ Warning/Alarm Lights
- ▶ Backlighting of Overlays
- ▶ Post Lighting Switches and Keypads

Lumex Part Number	Die Material	Emitted Color	Peak (nm)	Lens	Operating Current (mA)	Operating TYP. Vf (V)	Brightness TYP. Mcd	@ mA	View Angle° 2θ	Component LED Used
<b>HIGH BRIGHTNESS</b>										
SSF-LXH2103SISID/2	AllnGaP	Super High Intensity Red	636	Red Diffused	5-25	2	100	20	60	SSL-LX3044SID
SSF-LXH2103SOSOD/2	AllnGaP	Super Orange	610	Orange Diffused	5-25	2	100	20	60	SSL-LX3044SOD
SSF-LXH2103SUGUGD2	AllnGaP	Super Ultra Green	574	Green Diffused	5-25	2.2	60	20	60	SSL-LX3044SUGD
SSF-LXH2103SYSYD/2	AllnGaP	Super Yellow	590	Yellow Diffused	5-25	2	100	20	60	SSL-LX3044SYD
SSF-LXH2103USBSBD2	InGaN/SiC	Ultra Super Blue	470	Blue Diffused	5-25	3.5	200	20	60	SSL-LX3044USBD



USA/Canada +1-800-278-5666  
Europe +49-6081-964380  
Asia +886-3-5821124



[www.lumex.com](http://www.lumex.com)



USA/Canada +1-847-359-8904  
Europe +49-6081-964381  
Asia +886-3-5821154

1
2
3
4
5
6
7
8
9
10
11
12
13
14
15
16
17
18
19
20
21
22
23
24
25
26
27
28
29

## X-ON Electronics

Largest Supplier of Electrical and Electronic Components

*Click to view similar products for [LED Circuit Board Indicators](#) category:*

*Click to view products by [Lumex](#) manufacturer:*

Other Similar products are found below :

[568-0701-841F](#) [LTL-4221NH129](#) [LTL-42DGNMHDP1](#) [HLMP1521101](#) [HLMP1523802F](#) [HLMP1700101F](#) [HLMP1700104F](#) [BHA-1564-G](#)  
[SMF-HM1530YD-305](#) [SSF-LXH409SYSUGW](#) [AM2520EHSGD](#) [HLMP1301104F](#) [HLMP1385101F](#) [HLMP1421101](#) [HLMP1503103F](#)  
[HLMP1503104F](#) [HLMP1700102F](#) [HLMP1700106F](#) [HLMP1700107F](#) [HLMP1790101F](#) [HLMP1790103F](#) [LTL-4211NHBP](#) [5390H3](#) [5390H5](#)  
[551-2802F](#) [552-0794-810F](#) [553-0222-812F](#) [HT3-BC-T](#) [564-0700-831F](#) [WP59BLGEW](#) [103-3101-1231-403](#) [5502407811F](#) [550-3007-810F](#)  
[551-3307MF](#) [552080-1](#) [573-2399-100F](#) [592-2020-302F](#) [5932-927-2701-3F](#) [SMF-HM1530SRD-509](#) [SSF-LXH100MID](#) [SSF-](#)  
[LXH2103SRSRDRP](#) [SSF-LXH555USBW](#) [WP937SB/4YGW](#) [WP937EB2EGW](#) [HT3-BLU-T](#) [551-0312-802F](#) [553-0110-802F](#) [561-5501-050F](#)  
[6202T3-5VLC](#) [MV60538MP7](#)