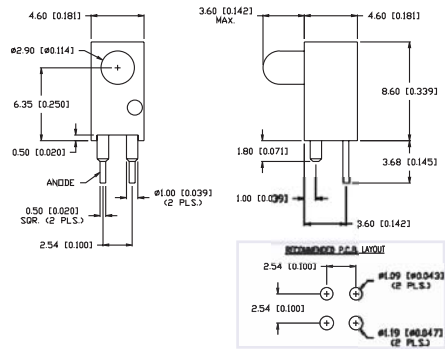




SSF-LXH1360 Series

T-3mm Single Level with Locator Pins



FEATURES / OPTIONS

- ▶ State-of-the-Art, Chip Technology
- ▶ Easy Drop-In Board Installation
- ▶ Right Angle to the Board Position
- ▶ Choice of Colors and Lens Finishes
- ▶ Low Current Versions Available
- ▶ Color or Intensity Sorting Available
- ▶ Locator Feet/Posts
- ▶ Blinking LED
- ▶ With Internal Resistor for 5V and 12V Operation
- ▶ Black or Gray Holders for High Contrast

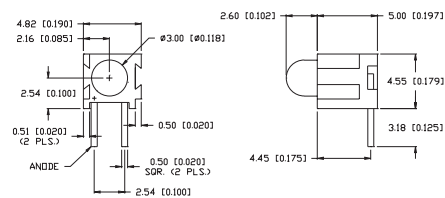
APPLICATIONS / USES

- ▶ Board Level Status Indicators
- ▶ Board Level Fault Indicators
- ▶ Circuit Troubleshooting Indicators
- ▶ Warning/Alarm Lights
- ▶ Backlighting of Overlays
- ▶ Post Lighting Switches and Keypads

Lumex Part Number	Die Material	Emitted Color	Peak (nm)	Lens	Operating Current (mA)	Operating TYP. Vf (V)	Brightness TYP. Mcd	@ mA	View Angle° 2θ	Component LED Used
HIGH BRIGHTNESS										
SSF-LXH1360SID	AlInGaP	Super High Intensity Red	636	Red Diffused	5-25	2	100	20	60	SSL-LX3044SID
SSF-LXH1360SOD	AlInGaP	Super Orange	610	Orange Diffused	5-25	2	100	20	60	SSL-LX3044SOD
SSF-LXH1360SUGD	AlInGaP	Super Ultra Green	574	Green Diffused	5-25	2.2	60	20	60	SSL-LX3044SUGD
SSF-LXH1360SYD	AlInGaP	Super Yellow	590	Yellow Diffused	5-25	2	100	20	60	SSL-LX3044SYD
SSF-LXH1360USBD	InGaN/SiC	Ultra Super Blue	470	Blue Diffused	5-25	3.5	200	20	60	SSL-LX3044USBD

SSF-LXHM140 Series

T-3mm Single Level Mating, LED Center 0.1" from PCB



FEATURES / OPTIONS

- ▶ State-of-the-Art, Chip Technology
- ▶ Easy Drop-In Board Installation
- ▶ Right Angle to the Board Position
- ▶ Choice of Colors and Lens Finishes
- ▶ Low Current Versions Available
- ▶ Color or Intensity Sorting Available
- ▶ Mating Holder
- ▶ Blinking LED
- ▶ With Internal Resistor for 5V and 12V Operation
- ▶ Black or Gray Holders for High Contrast
- ▶ Color Combinations

APPLICATIONS / USES

- ▶ Board Level Status Indicators
- ▶ Board Level Fault Indicators
- ▶ Circuit Troubleshooting Indicators
- ▶ Warning/Alarm Lights
- ▶ Backlighting of Overlays
- ▶ Post Lighting Switches and Keypads

Lumex Part Number	Die Material	Emitted Color	Peak (nm)	Lens	Operating Current (mA)	Operating TYP. Vf (V)	Brightness TYP. Mcd	@ mA	View Angle° 2θ	Component LED Used
HIGH BRIGHTNESS										
SSF-LXHM140SID	AlInGaP	Super High Intensity Red	636	Red Diffused	5-25	2	100	20	60	SSL-LX3044SID
SSF-LXHM140SOD	AlInGaP	Super Orange	610	Orange Diffused	5-25	2	100	20	60	SSL-LX3044SOD
SSF-LXHM140SUGD	AlInGaP	Super Ultra Green	574	Green Diffused	5-25	2.2	60	20	60	SSL-LX3044SUGD
SSF-LXHM140SYD	AlInGaP	Super Yellow	590	Yellow Diffused	5-25	2	100	20	60	SSL-LX3044SYD
SSF-LXHM140USBD	InGaN/SiC	Ultra Super Blue	470	Blue Diffused	5-25	3.5	200	20	60	SSL-LX3044USBD
SSF-LXHM140UWW	InGaN/SiC	Ultra White	-	White Diffused	5-25	3.5	500	20	30	SSL-LX3044UWW



USA/Canada +1-800-278-5666
Europe +49-6081-964380
Asia +886-3-5821124



www.lumex.com



USA/Canada +1-847-359-8904
Europe +49-6081-964381
Asia +886-3-5821154

X-ON Electronics

Largest Supplier of Electrical and Electronic Components

Click to view similar products for [LED Circuit Board Indicators](#) category:

Click to view products by [Lumex](#) manufacturer:

Other Similar products are found below :

[568-0701-841F](#) [LTL-4221NH129](#) [LTL-42DGNMHDP1](#) [HLMP1521101](#) [HLMP1523802F](#) [HLMP1700101F](#) [HLMP1700104F](#) [BHA-1564-G](#)
[SMF-HM1530YD-305](#) [SSF-LXH409SYSUGW](#) [AM2520EHSGD](#) [HLMP1301104F](#) [HLMP1385101F](#) [HLMP1421101](#) [HLMP1503103F](#)
[HLMP1503104F](#) [HLMP1700102F](#) [HLMP1700106F](#) [HLMP1700107F](#) [HLMP1790101F](#) [HLMP1790103F](#) [LTL-4211NHBP](#) [5390H3](#) [5390H5](#)
[551-2802F](#) [552-0794-810F](#) [553-0222-812F](#) [HT3-BC-T](#) [564-0700-831F](#) [WP59BLGEW](#) [103-3101-1231-403](#) [5502407811F](#) [550-3007-810F](#)
[551-3307MF](#) [552080-1](#) [573-2399-100F](#) [592-2020-302F](#) [5932-927-2701-3F](#) [SMF-HM1530SRD-509](#) [SSF-LXH100MID](#) [SSF-](#)
[LXH2103SRSRDRP](#) [SSF-LXH555USBW](#) [WP937SB/4YGW](#) [WP937EB2EGW](#) [HT3-BLU-T](#) [551-0312-802F](#) [553-0110-802F](#) [561-5501-050F](#)
[6202T3-5VLC](#) [MV60538MP7](#)