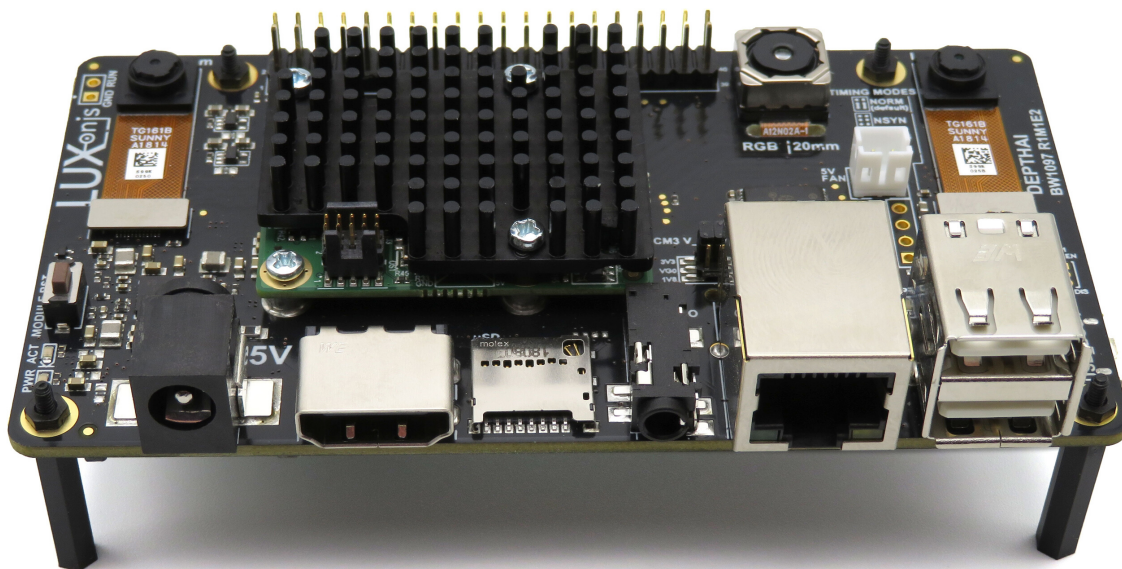


# **DEPTH**<sub>ai</sub>

## RASPBERRY PI COMPUTE MODULE



## ALL-IN-ONE, 30-SECOND SETUP

Intel Myriad X + Raspberry Pi + Triple Camera

This variant of DepthAI includes everything needed to get going right away. The system includes a Raspberry Pi (Compute Module, on the backside of the board) and includes a 16GB uSD Card which is pre-flashed with Raspbian and has an included factory stereo calibration.

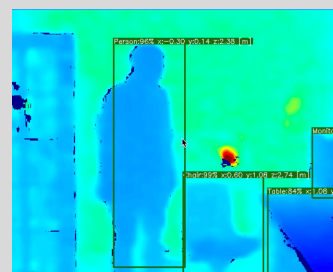
So all that is required to harness the incredible power of real-time object localization is to plug in the included 5V power supply and plug in HDMI to a display.

The system boots up automatically running object localization on 20-classes (including person, car, monitor, etc.).

So right off the bat you have a working example of real-time (25 FPS) object localization: where things are in 3D space (xyz in meters) and what they are (bottle, bicycle, board, etc.). Swap in other models, and now it knows what those classes are, and where each object of those classes are in physical space - real-time and w/ 0% RPi CPU load.

## EMBEDDED DEPTH + AI PERCEPTION

Real-time object  
detection and  
localization in 3D  
space





# DEPTH<sub>ai</sub>

## RASPBERRY PI COMPUTE MODULE

### HARDWARE FEATURES

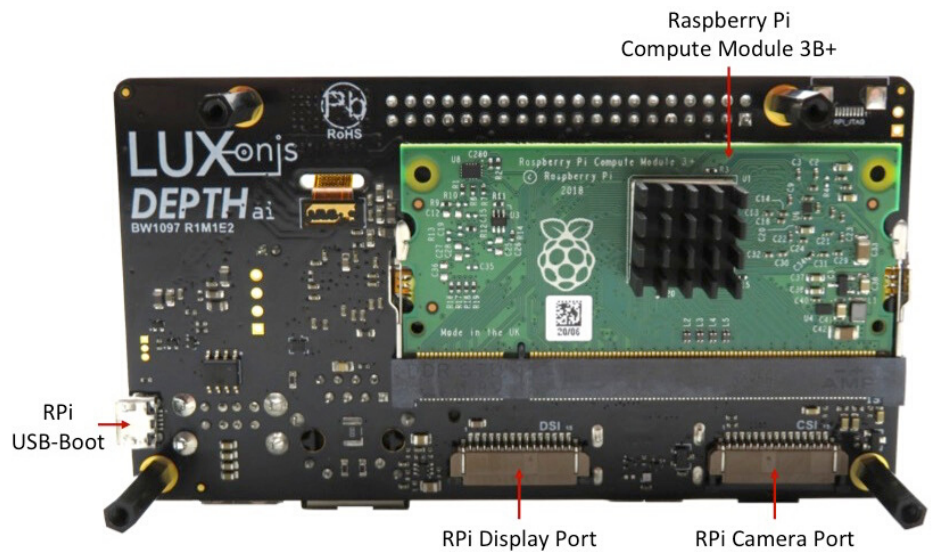
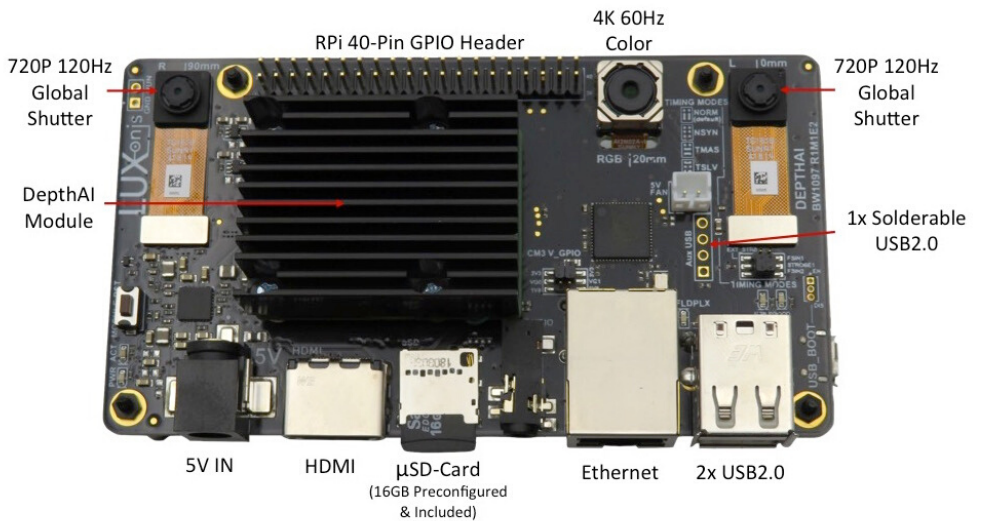
- 2x 720P, 120Hz global shutter mono camera for high-quality, high-speed 3D perception

- 1x 12MP, 4K, 60Hz color camera for excellent color representation and digital zoom and multi-model neural model functionality.

- All standard RPi interfaces included

- RPi CPU available for your code - the Myriad X handles all the visual processing and AI

- Passively cooled



## X-ON Electronics

Largest Supplier of Electrical and Electronic Components

*Click to view similar products for [Single Board Computers](#) category:*

*Click to view products by [Luxonis](#) manufacturer:*

Other Similar products are found below :

[AmITX-SL-G-Q170](#) [MVME61006E-2173R](#) [BBS2600BPS](#) [BLKNUC7I3DNHNC1978015](#) [IOT-LS1012A-OXALIS](#) [NITX-300-ET-DVI](#)  
[UPN-EHLX4E-A10-0432](#) [UPN-EHLX4RE-A10-0864](#) [81004-0000-99-1](#) [S26361-F5000-J004](#) [BPI-M2S\(AMLOGIC S922X\)](#) [BPI-](#)  
[M2S\(AMLOGIC A311D\)](#) [ROCK 4C+ PREMIUM KIT](#) [HUMMINGBOARD-I2EX BASE + WIFI/BT](#) [HUMMINGBOARD-I4 PRO +](#)  
[WIFI/BT](#) [VAB-600-B](#) [RT5350F-OLINUXINO-EVB](#) [MITX-440-DVI-2E](#) [NITX-315-DEVKIT](#) [A13-SOM-512](#) [BANANA PI BPI-M1+](#) [A13-](#)  
[SOM-WIFI-4GB](#) [AM3359-SOM-EVB-IND](#) [1996](#) [AIMB-223G2-S0A1E](#) [AIMB-562VG-GRA1E](#) [MIO-2263JH-U0A1E](#) [MIO-5270DZ-](#)  
[2GS0A1E](#) [MIO-5251JZ2-2GA1E](#) [PCE-5126QVG-00A1E](#) [PCE-5125QG2-00A1E](#) [MIO-5251E-S3A1E](#) [MIO-2261Z-2GS6A1E](#) [MIO-](#)  
[5270DZ22GS0A1E](#) [PCE-7127G2-00A1E](#) [AIMB-230G2-U0A1E](#) [MIO-2263EZ22GS3A1E](#) [SIMB-M22-2G2S0A1E](#) [ASMB-823I-00A1E](#)  
[MIO-5251J-U0A1E](#) [AIMB-502WG2-00A1E](#) [BBB01-SC-505](#) [IMB-M43](#) [AmITX-BT-I-E3845](#) [PICO300VGA-N3710](#) [PICO300VGA-N3060](#)  
[PICO300HGA-N3710](#) [W65C265QBX](#) [DFR0444](#) [DFR0419](#)