

M-Series

CIRCUIT BREAKER

The M-Series is a low cost, miniature, hydraulic-magnetic circuit breaker which features a compact, space saving design, front panel snap-in mounting and a vertically mounted parallel pole configuration. It features various styling options to maximize your design flexibility. Choices include rocker, illuminated rocker, paddle and baton style handle actuators, push-to-reset and push-pull pushbutton actuators, as well as Visi-Rocker two color actuators. Our exclusive Rockerguard bezel helps prevent inadvertent actuation and a wiping contact mechanism assures long-term reliability.

The M-Series circuit breakers are available with 1, 2 or parallel poles, 0.02 to 50 amp ratings, and 125 and 250VAC or 80VDC versions. With over 16 different time delays, 5 terminal styles, a variety of panel hardware, various colors, and legend imprinting, it assures suitability for most any application design.



Resources:

[Download 3D CAD Files](#)

[IGS >](#)

[STP >](#)

Product Highlights:

- Parallel pole configuration fits in one rack unit
- MIL-PRF-55629
- MIL STD 202 compliant
- MIL-PRF-39019F ingress protection
- Sealed toggle actuator
- Compact design

Typical Applications:

- Telecom/Datacom
- Transportation
- Marine
- Generators
- Power Supplies
- Medical Equipment



Carling Technologies®

Innovative Designs. Powerful Solutions.

Carling Technologies, Inc.

60 Johnson Avenue, Plainville, CT 06062

Email: sales@carlingtech.com

Application Support: team2@carlingtech.com

Phone: 860.793.9281 Fax: 860.793.9231

www.carlingtech.com

Electrical

Maximum Voltage 125/250 VAC 50/60 Hz, 80 VDC (See Rating Tables.)

Current Ratings Standard current coils: 0.100, 0.250, 0.500, 0.750, 1.00 thru 15.0 in 1 amp increments, 18.0, 20.0, 25.0, 30.0. Other ratings available - see Ordering Scheme.

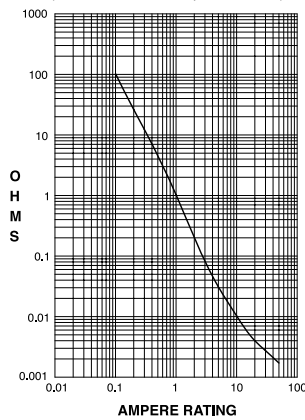
Auxiliary Switch Rating SPDT; 7A 250VAC, 7A (Res) 28VDC, 4A (Ind.) 28VDC, 0.25A 80VDC (Res) (silver contacts), 0.1A 125VAC (gold contacts).

Insulation Resistance Minimum of 100 Megohms at 500 VDC.

Dielectric Strength UL, CSA 1500V, 50/60 Hz for one minute between all electrically isolated terminals. M-Series Circuit Breakers comply with the 8mm spacing and 3750 V 50/60Hz dielectric requirements from hazardous voltage to operator accessible surfaces, per Publications IEC 380, 435, 950, EN 60950 and VDE 0805.

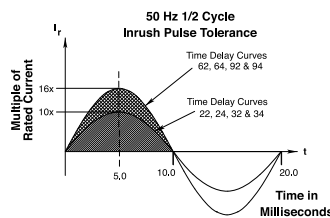
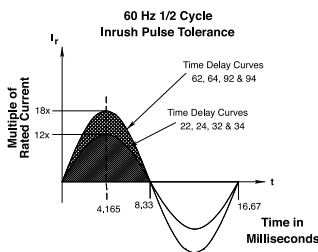
Resistance, Impedance Values from Line to Load Terminal - based on Series Trip Circuit Breaker.

RESISTANCE PER POLE VALUES from Line to Load Terminals (Values Based on Series Trip Circuit Breaker)



| CURRENT (AMPS) | TOLERANCE (%) |
|----------------|---------------|
| 0.10 - 20.0 | ± 25 |
| 20.1 - 50.0 | ± 35 |

Pulse Tolerance Curves



*Manufacturer reserves the right to change product specification without prior notice.

Mechanical

Endurance 10,000 ON-OFF operations @ 6 per minute with rated Current and Voltage.

Trip Free All M-Series Circuit Breakers will trip on overload, even when actuator is forcibly held in the ON position.

Trip Indication The actuator moves positively to the OFF position when an overload causes the circuit breaker to trip.

Physical

Number of Poles 1 or 2

Internal Circuit Configs. Series with or without Auxiliary Switch. Switch Only with or without Auxiliary Switch.

Weight Approximately 30 grams/pole (Approximately 1.07 ounces/pole)

Standard Colors See Ordering Scheme

Environmental

Designed in accordance with requirements of specification MIL PRF-55629 & MIL-STD-202G as follows:

Shock Withstands 100 Gs, 6ms, sawtooth while carrying rated current per Method 213, Cond. I. Instantaneous curves tested at 80% of rated current.

Vibration Withstands 0.060" excursion from 10-55 Hz, and 10 Gs 55-500 Hz, at rated current per Method 204C, Test Condition A. Instantaneous curves tested at 80% of rated current.

Moisture Resistance Method 106D, i.e., ten 24-hour cycles @ + 25°C to +65°C, 80-98% RH.

Salt Spray Method 101, Condition A (90-95% RH @ 5% NaCl Solution, 96 hrs).

Thermal Shock Method 107D, Condition A (Five cycles @ -55°C to +25°C to +85°C to +25°C).

Operating Temperature -40° C to +85° C

Chemical Resistance Only the outside surfaces of the case and the handles may be cleaned with detergents or alcohol. Organic (hydrocarbon based) solvents are not recommended because they attack plastics. Caution should be taken when solvents are used to clean and remove flux from terminals. Lubricants should not be introduced into the handle/ bushing openings

Electrical Tables

Table A: Lists UL Recognized and CSA Accepted configurations & performance capabilities as a Component Supplementary Protector.

| M-SERIES TABLE A: COMPONENT SUPPLEMENTARY PROTECTORS | | | | | | | | | | |
|--|-------------------|-----------|-----------|----------------|----------------------|-------------------|-------------------------------|---------------------|-------------------|-----------------|
| Circuit Configuration | Voltage | | | Current Rating | | Poles Breaking | Short Circuit Capacity (Amps) | | Application Codes | |
| | Max Rating | Frequency | Phase | Full Load Amps | General Purpose Amps | | UL / CSA | | UL | CSA |
| | | | | | | | With Backup Fuse | Without Backup Fuse | | |
| Series | 32 | DC | --- | 0.02 - 15 | --- | 1 | --- | 1000 | TC1, 2, OL1, U1 | TC1, 2, OL1, U1 |
| | | | | --- | 15.1 - 25 | 1 | --- | 1000 | TC1, 2, OL0, U1 | TC1, 2, OL0, U1 |
| | 50 ² | DC | --- | 0.02 - 7.5 | --- | 1 | --- | 1000 | TC1, 2, OL0, U1 | TC1, 2, OL0, U1 |
| | | | | 0.02 - 15 | --- | 2 | --- | 1000 | TC1, 2, OL1, U1 | TC1, 2, OL1, U1 |
| | 65 | DC | --- | --- | 15.1 - 25 | 2 | --- | 1000 | TC1, 2, OL0, U1 | TC1, 2, OL0, U1 |
| | | | | 0.02 - 15 | --- | 1 | --- | 1000 | TC1, 2, OL1, U1 | TC1, 2, OL1, U1 |
| | 65 ^{1,2} | DC | --- | --- | 15.1 - 30 | 1 | --- | 1000 | TC1, 2, OL0, U1 | TC1, 2, OL0, U1 |
| | | | | 0.02 - 15 | --- | 2 | 5000 ³ | --- | TC1, 2, OL1, C1 | TC1, 2, OL1, C1 |
| | 65 | DC | --- | --- | 15.1 - 25 | 2 | 5000 ³ | --- | TC1, 2, OL0, C1 | TC1, 2, OL0, C1 |
| | | | | 0.02 - 15 | --- | 1 | --- | 600 | TC1, 2, OL1, U1 | TC1, 2, OL1, U1 |
| | 80 ¹ | DC | --- | --- | 15.1 - 30 | 1 | --- | 600 | TC1, 2, OL0, U1 | TC1, 2, OL0, U1 |
| | | | | 0.02 - 15 | --- | 1 | --- | 1000 | TC1, 2, OL1, U1 | TC1, 2, OL1, U1 |
| | 125 | 50 / 60 | 1 | 0.02 - 15 | --- | 1 | --- | 1000 | TC1, 2, OL1, U1 | TC1, 2, OL1, U1 |
| | | | | --- | 15.1 - 30 | 1 | --- | 1000 | TC1, 2, OL0, U1 | TC1, 2, OL0, U1 |
| 1 - 30 | | | | --- | 1 | --- | 360 | TC1, OL1, U2 | TC3, OL1, U3 | |
| 250 ² | 50 / 60 | 1 | 0.02 - 12 | --- | 1 | --- | 1000 | TC1, 2, OL1, U1 | TC1, 2, OL1, U1 | |
| 250 | 50 / 60 | 1 | --- | 12.1 - 18 | 1 | 1000 ⁴ | --- | TC1, 2, OL0, C1 | TC1, 2, OL0, C1 | |
| 250 | 50 / 60 | 1 | 0.02 - 15 | --- | 2 | --- | 1000 | TC1, 2, OL1, U1 | TC1, 2, OL1, U1 | |
| | | | --- | 15.1 - 30 | 2 | --- | 1000 | TC1, 2, OL0, U1 | TC1, 2, OL0, U1 | |
| | | | 1 - 30 | --- | 2 | --- | 360 | TC1, OL1, U2 | TC3, OL1, U3 | |

Notes:

- 1 Polarity Sensitive
- 2 Available only with Special Catalog Number. Consult Factory.
- 3 Requires Branch Circuit Backup with a UL Listed type K-5 or RK-5 fuse rated 30 Amps maximum
- 4 Requires Branch Circuit Backup with a UL Listed type K-5 or RK-5 fuse rated 60 Amps maximum

Table B: Lists UL Recognized, CSA Accepted and TUV and VDE Certified configurations and performance capabilities as a Component Supplementary Protector.

| M-SERIES TABLE B: COMPONENT SUPPLEMENTARY PROTECTORS | | | | | | | | | | | | |
|--|-----------------|-----------|-------|----------------|----------------------|----------------|-------------------------------|---------------------|------------------|---------------------|-------------------|-----------------|
| Circuit Configuration | Voltage | | | Current Rating | | Poles Breaking | Short Circuit Capacity (Amps) | | | | Application Codes | |
| | Max Rating | Frequency | Phase | Full Load Amps | General Purpose Amps | | UL / CSA | | VDE / TUV | | UL | CSA |
| | | | | | | | With Backup Fuse | Without Backup Fuse | With Backup Fuse | Without Backup Fuse | | |
| Series | 32 | DC | --- | 0.02 - 15 | --- | 1 | --- | 1000 | 3000 | 500 | TC1, 2, OL1, U1 | TC1, 2, OL1, U1 |
| | | | | --- | 15.1 - 25 | 1 | --- | 1000 | 3000 | 500 | TC1, 2, OL0, U1 | TC1, 2, OL0, U1 |
| | 50 ² | DC | --- | 0.02 - 7.5 | --- | 1 | --- | 1000 | 3000 | 500 | TC1, 2, OL0, U1 | TC1, 2, OL0, U1 |
| | | | | 0.02 - 15 | --- | 2 | --- | 1000 | 3000 | 500 | TC1, 2, OL1, U1 | TC1, 2, OL1, U1 |
| | 65 | DC | --- | --- | 15.1 - 25 | 2 | --- | 1000 | 3000 | 500 | TC1, 2, OL0, U1 | TC1, 2, OL0, U1 |
| | | | | 0.02 - 15 | --- | 2 | 5000 | --- | 3000 | 500 | TC1, 2, OL1, C1 | TC1, 2, OL1, C1 |
| | 65 ³ | DC | --- | --- | 15.1 - 30 | 2 | 5000 | --- | 3000 | 500 | TC1, 2, OL0, C1 | TC1, 2, OL0, C1 |
| | | | | 0.02 - 15 | --- | 1 | --- | 600 ⁴ | --- | 500 | TC1, 2, OL1, U1 | TC1, 2, OL1, U1 |
| | 80 ¹ | DC | --- | --- | 15.1 - 30 | 1 | --- | 600 ⁴ | --- | 500 | TC1, 2, OL0, U1 | TC1, 2, OL0, U1 |
| | | | | 0.02 - 15 | --- | 1 | --- | 1000 | 3000 | 500 | TC1, 2, OL1, U1 | TC1, 2, OL1, U1 |
| | 125 | 50 / 60 | 1 | 0.02 - 15 | --- | 1 | --- | 360 | 3000 | 500 | TC1, OL1, U2 | TC3, OL1, U3 |
| | | | | 1 - 15 | --- | 1 | --- | 1000 | 3000 | 500 | TC1, 2, OL1, U1 | TC1, 2, OL1, U1 |
| | 250 | 50 / 60 | 1 | 0.02 - 12 | --- | 1 | --- | 1000 | 3000 | 500 | TC1, 2, OL1, U1 | TC1, 2, OL1, U1 |
| | | | | 0.02 - 20 | --- | 2 | --- | 1000 | 3000 | 500 | TC1, 2, OL0, U1 | TC1, 2, OL0, U1 |
| 1 - 12 | | | | --- | 1 | --- | 360 | 3000 | 500 | TC1, OL1, U2 | TC3, OL1, U3 | |

Notes:

- 1 Polarity Sensitive
- 2 Available only with Special Catalog Number. Consult Factory.
- 3 Requires Branch Circuit Backup with a UL Listed type K-5 or RK-5 fuse rated 30 Amps maximum
- 4 TUV only, not VDE
- 5 Requires backup protection with a thermal magnetic circuit breaker rated 32 amps and having a Type C trip characteristic per EN60898/DIN VDE 0641 (C32A) for ratings greater than 15amps, and a thermal magnetic circuit breaker rated 16 amps and having a Type C trip characteristic per EN60898/DIN VDE 0641 (C16A) for ratings 15 amps and less

Electrical Tables

Table C: Lists UL489A Listed and TUV Certified configurations and performance capabilities for use in Communications Equipment.

| M-SERIES TABLE C: UL489A Listed (Communications Equipment - Polarity Sensitive) | | | | | | |
|--|-----------------|-----------|-------------------------------------|----------------|------------------------------|-----|
| Circuit Configuration | Voltage | | Current Rating General Purpose Amps | Poles Breaking | Interrupting Capacity (Amps) | |
| | Max Rating | Frequency | | | Without Backup Fuse | |
| | | | | | UL489A | TUV |
| Series | 80 | DC | 0.02 - 30 | 1 | 600 | --- |
| | 65 ¹ | DC | 0.02 - 30 | 1 | 1000 | --- |
| | 80 | DC | 0.10 - 30 | 1 | 600 | 600 |

Notes:

1. Available only with Special Catalog Number

Table D: Lists UL489A Listed configurations and performance capabilities for use in Communications Equipment.

| M-SERIES TABLE D: Parallel Pole Construction UL489A Listed (Communications Equipment - Polarity Sensitive) | | | | | | |
|---|-----------------|-----------|-------------------------------------|----------------|------------------------------|--|
| Circuit Configuration | Voltage | | Current Rating General Purpose Amps | Poles Breaking | Interrupting Capacity (Amps) | |
| | Max Rating | Frequency | | | Without Backup Fuse | |
| | | | | | UL489A | |
| Series | 80 | DC | 31 - 50 | 2 | 600 | |
| | 65 ¹ | DC | 31 - 50 | 2 | 1000 | |

Notes:

1. Available only with Special Catalog Number

Agency Certifications

UL Recognized

UL Standard 1077



Component Recognition Program as Protectors, Supplementary (Guide CCN/QVNU2, File E75596)

CSA Accepted



Component Supplementary Protector (Class 3215 30, File 047848 0 000) CSA Standard C22.2 No. 235

UL Listed

UL Standard 489A



Communications Equipment (Guide CCN/DITT, File E189195)

VDE Certified



EN60934, VDE 0642 under File 10537

TUV Certified



EN60934, under License No. R9671109

M **E** **2** - **P** - **D2** - **650** - **5** - **A** **1** **2** - **B** - **T**

1 Series 2 Actuator 3 Poles 4 Circuit 5 Frequency & Delay 6 Current Rating 7 Terminal 8 Illumination 9 Actuator Color & Legend 10 Legend 11 Bezel Color 12 Agency Approval

1 SERIES
M

2 ACTUATOR

Single Color
A Angled
B Flat

Two Color Visi
D Indicate ON
E Indicate OFF

Single Color Translucent
F Angled
G Flat

| STYLE | INDICATE - "ON" (CODE-D) | INDICATE - "OFF" (CODE-E) | FLAT (CODES-B & G) | ANGLED (CODES-A & F) |
|------------|-----------------------------|------------------------------|-----------------------|-------------------------|
| VERTICAL | | | | |
| HORIZONTAL | | | | |

3 POLES
2 Two

4 CIRCUIT/AUXILIARY SWITCH 2
P Series Trip Current (Parallel Pole)
with Auxiliary Switch, Silver Contacts
Q Series Trip Current (Parallel Pole) .110 x 0.20 Q.C
with Auxiliary Switch, Gold Contacts
R Series Trip Current (Parallel Pole) .110 x 0.20 Q.C

5 FREQUENCY & TIME DELAY
D2 DC Short
D4 DC Medium

6 CURRENT RATING (AMPERES)

| CODE | AMPERES |
|------|---------|
| 631 | 31.000 |
| 635 | 35.000 |
| 640 | 40.000 |
| 645 | 45.000 |
| 650 | 50.000 |

7 TERMINAL
A Push in Stud
5 10-32 Screw (Bus Type)

8 ILLUMINATION
Non-Illuminated
A Non-Illuminated

9 ACTUATOR COLOR & LEGEND

| | Actuator Visi 1 | Legend |
|---|-----------------|--------|
| 1 | White | Black |
| 2 | Black | White |
| 3 | Red | White |
| 4 | Green | White |
| 5 | Blue | White |
| 6 | Yellow | Black |
| 7 | Gray | Black |
| 8 | Orange | Black |

10 LEGEND
2 ON - OFF Vertical
3 ON - OFF Horizontal
6 Dual Vertical
7 Dual Horizontal

11 BEZEL COLOR
A White without Rockerguard
B Black without Rockerguard
G Gray without Rockerguard
1 White with Rockerguard
2 Black with Rockerguard
7 Gray with Rockerguard

12 AGENCY APPROVAL
T UL 489A Listed

Notes:
1 Reminder of Rocker same color as Visi
2 Aux Switch only available with screw terminals



1 SERIES
M

2 ACTUATOR
M Paddle
T Push-Pull

3 POLES
2 Two

4 CIRCUIT/AUXILIARY SWITCH ¹
P Series Trip Current (Parallel Pole)
with Auxiliary Switch, Silver Contacts
Q Series Trip Current (Parallel Pole) .110 x 0.20 Q.C
with Auxiliary Switch, Gold Contacts
R Series Trip Current (Parallel Pole) .110 x 0.20 Q.C

5 FREQUENCY & TIME DELAY
D2 DC Short
D4 DC Medium

6 CURRENT RATING (AMPERES)

| CODE | AMPERES |
|------|---------|
| 631 | 31.000 |
| 635 | 35.000 |
| 640 | 40.000 |
| 645 | 45.000 |
| 650 | 50.000 |

7 TERMINAL
A Push in Stud
5 10-32 Screw (Bus Type)

8 ACTUATOR COLOR & LEGEND

| Handle | | Push Button | |
|--------|--------|-------------|--------|
| 1 | White | A | White |
| 2 | Black | B | Black |
| 3 | Red | C | Red |
| 4 | Green | D | Green |
| 5 | Blue | E | Blue |
| 6 | Yellow | F | Yellow |
| 7 | Gray | G | Gray |
| 8 | Orange | H | Orange |

9 FRONT PANEL HARDWARE

Handle

- A No outer Panel Hardware
- B Knurled Nut, Bright Nickel
- C Knurled Nut, Bright Nickel with Locking Ring
- D Knurled Nut, Black
- E Knurled Nut, Black with Locking Ring
- F Panel Dress, Bright Nickel
- G Panel Dress, Bright Nickel with Locking Ring
- H Panel Dress, Black
- J Panel Dress, Black with Locking Ring

Push Button

- 1 No outer Panel Hardware
- 2 Knurled Nut, Bright Nickel

10 LEGEND PLATE / BUTTON MARKING

Handle Actuator Legend Plate

- B** ON - OFF Vertical
- C** ON - OFF Horizontal

Push-Pull Actuator Legend Plate

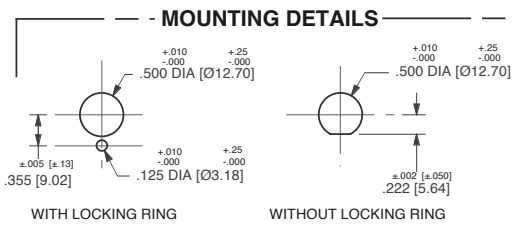
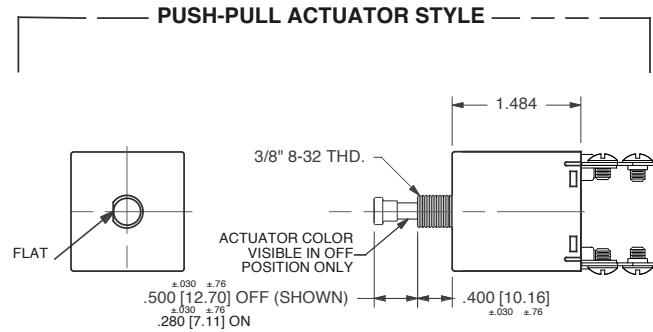
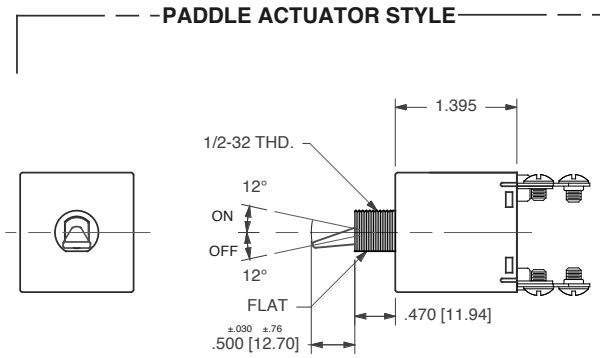
- 2** Rated Amps Horizontal
- 3** Rated Amps Line Side Down
- 4** Rated Amps Line Side Up

11 BUSHING COLOR
B Black

12 AGENCY APPROVAL
T UL 489A Listed

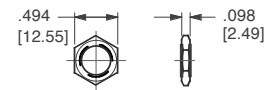
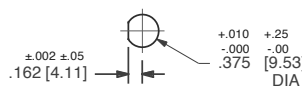
Notes:
 1 Aux Switch only available with screw terminals

Dimensional Specifications: in. [mm]



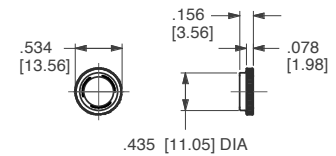
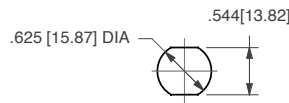
MOUNTING DETAILS

PANEL HARDWARE



PUSH-PULL, PUSH TO RESET

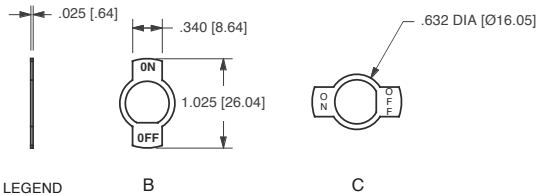
HEX NUT



SNAP-IN BUSHING

PANEL DRESS NUT

LEGEND PLATES

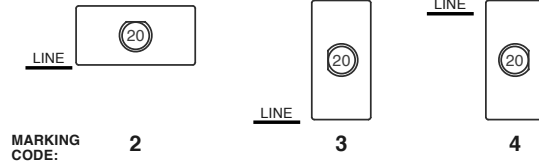


LEGEND CODE:

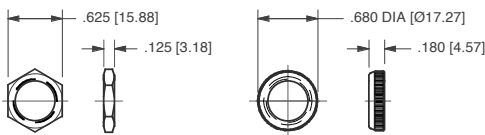
B

C

BUTTON MARKING ORIENTATION

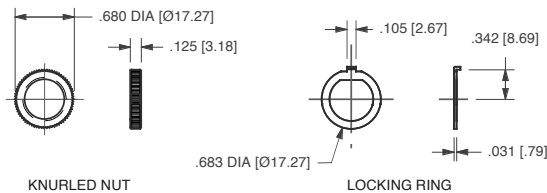


PANEL HARDWARE



HEX NUT

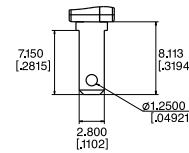
PANEL DRESS NUT



KNURLED NUT

LOCKING RING

.110QC AUXILIARY SWITCH TERMINALS





Notes:

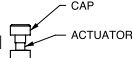

- All dimensions are in inches [millimeters].
- Tolerance ±.010 [.25] unless otherwise specified.
- Dimensions apply to both rocker styles.
- I-o, on-off or dual legends available for vertical or horizontal mounting.
- Notice that circuit breaker line and load terminal orientation on indicate "off" is opposite that of indicate "on".





1 SERIES
M

2 ACTUATOR ¹

Handle
M Paddle  N Baton 

Push Button
T Push-Pull  U Push To Reset 

Push Button with Snap-In Mounting
V Push-Pull  W Push To Reset 

3 POLES
1 One 2 Two

4 CIRCUIT ²
without Auxiliary Switch
A Switch Only (no coil), Maintained Contacts
B Series Trip (Current)
with Auxiliary Switch, Silver Contacts
M Series Trip (Current) Aux Switch
P³ Switch Only, Maintained Contacts
Q^{3,4} Switch Only, Maintained Contacts
R^{3,13} Switch Only, Maintained Contacts
S³ Series Trip (Current)
T^{3,4} Series Trip (Current)
U^{3,13} Series Trip, Maintained Contacts
with Auxiliary Switch, Gold Contacts
2^{3,4} Switch Only, Maintained Contacts
3^{3,13} Switch Only, Maintained Contacts
4^{3,4} Series Trip (Current)
5^{3,13} Series Trip, Maintained Contacts
9 Series Trip (Current) Aux Switch

Terminal Type:
.110 QC x .020 QC
.060 Dia, Round Solder Turret
.058 Dia, Round Q.C.
.080 Dia x .020 Flat Q.C.
.060 Dia, Round Solder Turret
.058 Dia, Round Q.C.
.080 Dia x .020 Flat Q.C.
.058 Dia, Round Q.C.
.080 Dia x .020 Flat Q.C.
.058 Dia, Round Q.C.
.080 Dia x .020 Flat Q.C.
.110 QC x .020 QC

5 FREQUENCY & DELAY

| | | | | | |
|----|-------------|---------------|-------------|----|-------------------------------|
| 03 | DC | 50/60Hz | Switch Only | 32 | DC, 50/60Hz Short |
| 10 | DC | Instantaneous | | 34 | DC, 50/60Hz Medium |
| 12 | DC | Short | | 62 | 50/60Hz Short, Hi-Inrush |
| 14 | DC | Medium | | 64 | 50/60Hz Medium, Hi-Inrush |
| 20 | 50/60Hz | Instantaneous | | 72 | DC, Short, Hi-Inrush |
| 22 | 50/60Hz | Short | | 74 | DC, Medium, Hi-Inrush |
| 24 | 50/60Hz | Medium | | 92 | DC, 50/60Hz Short, Hi-Inrush |
| 30 | DC, 50/60Hz | Instantaneous | | 94 | DC, 50/60Hz Medium, Hi-Inrush |

| Voltage | | | Full Load Amp Rating | | General Purpose Amps | | Tungsten Lamp Rating | | Poles Breaking |
|------------|-----------|-------|----------------------|---------------------------------|----------------------|---------------------------------|----------------------|---------------------------------|----------------|
| Max Rating | Frequency | Phase | Max Amps | Choose Current Coil Rating Code | Max Amps | Choose Current Coil Rating Code | Max Amps | Choose Current Coil Rating Code | |
| 32 | DC | - | 15 | 615 | 25 | 625 | - | - | 1 |
| 50 | DC | - | - | - | 7.5 | Consult Factory | - | - | 1 |
| 65 | DC | 1 | 15 | 615 | 25 | 625 | - | - | 2 |
| 125 | 50/60Hz | 1 | 15 | 615 | 25 | 625 | 15 | 615 | 1 |
| 250 | 50/60Hz | 1 | 12 | 612 | - | - | - | - | 1 |
| 250 | 50/60Hz | 1 | 15 | 615 | 25 | 625 | - | - | 2 |

- Notes:
- One actuator is located in the center of each multi-pole breaker. Actuator codes V & W limited to single pole breakers only.
 - Switch Only circuits are not available with Push-To-Reset actuators. For Switch Only circuits, select Current Coil Rating from the above chart.
 - One Auxiliary Switch is supplied per breaker. On two-pole breakers, standard Auxiliary Switch mounting is in pole one. Auxiliary Switch option limited to Series Trip and Switch Only circuits. Not available with back connect screw or push-in stud terminals.
 - Mates with AMP .058" diameter pin receptacles including 60983-1 (gold plated) and 60983-2 (tin plated).
 - Actuator color is only visible in the OFF position on Push-Pull actuators.
 - All units except snap-in mounting have one hex nut installed on bushing for use behind the panel.
 - Other colors available. Consult factory.
 - TUV 20A, VDE 15A. UL Recognized and CSA Accepted to 30 amps. Screw Terminals or Push-in Stud recommended above 20 amps.
 - 30 amp rating not available with delay's 30, 32, 34, 92 or 94.
 - Screw Terminals are VDE certified only with use of ring terminal attached to wire.
 - Terminal code A available with circuit codes A & B only.
 - Printed circuit board available with UL recognized approval only.
 - Auxiliary switch (flat Q.C.) available with UL recognized approvals only.

6 CURRENT RATING (AMPERES)

| CODE | AMPERES | | | | | | |
|------|---------|-----|-------|-----|--------|-----|---------------------|
| 020 | 0.020 | 225 | 0.250 | 420 | 2.000 | 710 | 10.500 |
| 025 | 0.025 | 230 | 0.300 | 522 | 2.250 | 611 | 11.000 |
| 030 | 0.030 | 235 | 0.350 | 425 | 2.500 | 711 | 11.500 |
| 035 | 0.035 | 240 | 0.400 | 527 | 2.750 | 612 | 12.000 |
| 040 | 0.040 | 245 | 0.450 | 430 | 3.000 | 712 | 12.500 |
| 045 | 0.045 | 250 | 0.500 | 435 | 3.500 | 613 | 13.000 |
| 050 | 0.050 | 255 | 0.550 | 440 | 4.000 | 614 | 14.000 |
| 055 | 0.055 | 260 | 0.600 | 445 | 4.500 | 615 | 15.000 |
| 060 | 0.060 | 265 | 0.650 | 450 | 5.000 | 616 | 16.000 |
| 065 | 0.065 | 270 | 0.700 | 455 | 5.500 | 617 | 17.000 |
| 070 | 0.070 | 275 | 0.750 | 460 | 6.000 | 618 | 18.000 |
| 075 | 0.075 | 280 | 0.800 | 465 | 6.500 | 620 | 20.000 |
| 080 | 0.080 | 285 | 0.850 | 470 | 7.000 | 622 | 22.000 |
| 085 | 0.085 | 290 | 0.900 | 475 | 7.500 | 624 | 24.000 |
| 090 | 0.090 | 295 | 0.950 | 480 | 8.000 | 625 | 25.000 |
| 090 | 0.095 | 410 | 1.000 | 485 | 8.500 | 630 | 30.000 ⁹ |
| 210 | 0.100 | 512 | 1.250 | 490 | 9.000 | | |
| 215 | 0.150 | 415 | 1.500 | 495 | 9.500 | | |
| 220 | 0.200 | 517 | 1.750 | 610 | 10.000 | | |

7 TERMINAL

| | | | |
|-----------------|-------------------------------|-----------------|-----------------------|
| 1 | Push-On 0.250 Tab (Q.C.) | A ¹¹ | Push-In Stud |
| 2 ¹⁰ | Screw 8-32 with Upturned Lugs | P ¹² | Printed Circuit Board |
| 3 ¹⁰ | Screw 8-32 (Bus Type) | | |

8 ACTUATOR COLOR & LEGEND ⁵

| Gloss Handle | Push-Button | Actuator Color |
|--------------|-------------|----------------|
| 1 | A | White |
| 2 | B | Black |
| 3 | C | Red |
| 4 | D | Green |
| 5 | E | Blue |
| 6 | F | Yellow |
| 8 | H | Orange |

9 FRONT PANEL HARDWARE ⁶

| | Handle | Push-Button |
|---------------------------------|--------|-------------|
| No outer Panel Hardware | A | 1 |
| Knurled Nut | | |
| Bright nickel | B | 2 |
| Bright nickel with locking ring | C | |
| Black | D | |
| Black with locking ring | E | |
| Panel Dress Nut | | |
| Bright nickel | F | |
| Bright nickel with locking ring | G | |
| Black | H | |
| Black with locking ring | J | |

10 LEGEND PLATE / BUTTON MARKING

Handle Actuator Legend Plate (Actuator Styles M & N)

- A No Legend Plate
- B ON - OFF Vertical
- C ON - OFF Horizontal
- D I - O Vertical
- E I - O Horizontal

Push-Pull Actuator Button Cap (Actuator Styles T & V)

- 1 No Marking
- 2 Rated Amps Horizontal
- 3 Rated Amps Line Side Down
- 4 Rated Amps Line Side Up

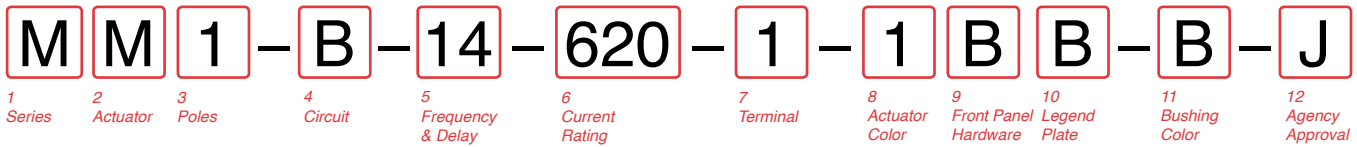
Push-to-Reset Actuator Button (Actuator Styles U & W)

- 1 No Marking

11 BUSHING COLOR ⁷
B Black



12 AGENCY APPROVAL ⁸



- C UL Recognized & CSA Accepted
- D VDE Certified, UL Recognized & CSA Accepted
- E TUV Certified, UL Recognized & CSA Accepted





1 SERIES
M

2 ACTUATOR ¹

Handle
M Paddle  N Baton 

Push Button
T Push-Pull  U ⁸ Push To Reset 

Push Button with Snap-In Mounting
V Push-Pull  W ⁸ Push To Reset 

3 POLES
1 One

4 CIRCUIT
without Auxiliary Switch
B Series Trip (Current)
with Auxiliary Switch, Silver Contacts
M Series Trip (Current) Aux Switch
S ³ Series Trip (Current)
T ^{3,4} Series Trip (Current)
U ^{3,13} Series Trip, Maintained Contacts
with Auxiliary Switch, Gold Contacts
4 ^{2,3} Series Trip (Current)
5 ^{3,12} Series Trip, Maintained Contacts
9 Series Trip (Current) Aux Switch

Terminal Type:
.110 QC x .020 QC
.060 Dia, Round Solder Turret
.058 Dia, Round Q.C.
.080 Dia x .020 Flat Q.C.
.058 Dia, Round Q.C.
.080 Dia x .020 Flat Q.C.
.110 QC x .020 QC

5 FREQUENCY & DELAY

| | |
|---------------------|--------------------------|
| 10 DC Instantaneous | 72 DC, Short, Hi-Inrush |
| 12 DC Short | 74 DC, Medium, Hi-Inrush |
| 14 DC Medium | |

6 CURRENT RATING (AMPERES)

| CODE | AMPERES | | | | |
|------|---------|-----|-------|-----|--------|
| 020 | 0.020 | 225 | 0.250 | 420 | 2.000 |
| 025 | 0.025 | 230 | 0.300 | 522 | 2.250 |
| 030 | 0.030 | 235 | 0.350 | 425 | 2.500 |
| 035 | 0.035 | 240 | 0.400 | 527 | 2.750 |
| 040 | 0.040 | 245 | 0.450 | 430 | 3.000 |
| 045 | 0.045 | 250 | 0.500 | 435 | 3.500 |
| 050 | 0.050 | 255 | 0.550 | 440 | 4.000 |
| 055 | 0.055 | 260 | 0.600 | 445 | 4.500 |
| 060 | 0.060 | 265 | 0.650 | 450 | 5.000 |
| 065 | 0.065 | 270 | 0.700 | 455 | 5.500 |
| 070 | 0.070 | 275 | 0.750 | 460 | 6.000 |
| 075 | 0.075 | 280 | 0.800 | 465 | 6.500 |
| 080 | 0.080 | 285 | 0.850 | 470 | 7.000 |
| 085 | 0.085 | 290 | 0.900 | 475 | 7.500 |
| 090 | 0.090 | 295 | 0.950 | 480 | 8.000 |
| 090 | 0.095 | 410 | 1.000 | 485 | 8.500 |
| 210 | 0.100 | 512 | 1.250 | 490 | 9.000 |
| 215 | 0.150 | 415 | 1.500 | 495 | 9.500 |
| 220 | 0.200 | 517 | 1.750 | 610 | 10.000 |

7 TERMINAL ⁴

| | |
|---------------------------------|---------------------------------------|
| 1 Push-On 0.250 Tab (Q.C.) | A ¹⁰ Push-In Stud |
| 2 Screw 8-32 with Upturned Lugs | P ¹¹ Printed Circuit Board |
| 3 Screw 8-32 (Bus Type) | |

8 ACTUATOR COLOR & LEGEND ⁵

| Gloss Handle | Push-Button | Actuator Color |
|--------------|-------------|----------------|
| 1 | A | White |
| 2 | B | Black |
| 3 | C | Red |
| 4 | D | Green |
| 5 | E | Blue |
| 6 | F | Yellow |
| 8 | H | Orange |

9 FRONT PANEL HARDWARE ⁶

| No outer Panel Hardware | Handle | Push-Button |
|---------------------------------|--------|-------------|
| Knurled Nut | A | 1 |
| Bright nickel | B | 2 |
| Bright nickel with locking ring | C | |
| Black | D | |
| Black with locking ring | E | |
| Panel Dress Nut | F | |
| Bright nickel | G | |
| Bright nickel with locking ring | H | |
| Black | J | |
| Black with locking ring | | |

10 LEGEND PLATE / BUTTON MARKING

Handle Actuator Legend Plate (Actuator Styles M & N)

A No Legend Plate
B ON - OFF Vertical
C ON - OFF Horizontal
D I - O Vertical
E I - O Horizontal

Push-Pull Actuator Button Cap (Actuator Styles T & V)

1 ⁸ No Marking
2 Rated Amps Horizontal
3 Rated Amps Line Side Down
4 Rated Amps Line Side Up

Push-to-Reset Actuator Button (Actuator Styles U & W)

1 ⁸ No Marking

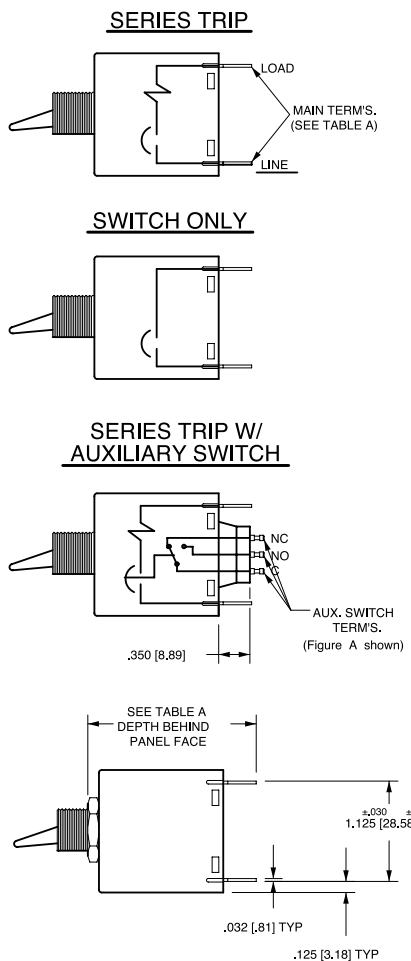
11 BUSHING COLOR ⁷
B Black

12 AGENCY APPROVAL ⁹

J UL489A Listed, TUV Certified
M UL Recognized, CSA Accepted
N UL Recognized, TUV Certified
T UL489A Listed

1 One actuator is located in the center of each multi-pole breaker. Actuator codes V & W limited to single pole breakers only.
2 One Auxiliary Switch is supplied per breaker. On two-pole breakers, standard Auxiliary Switch mounting is in pole one. Auxiliary Switch option limited to Series Trip and Switch Only circuits. Not available with Back Connected Screw or Push-in Stud terminals.
3 Mates with AMP .058" diameter pin receptacles including 60983-1 (gold plated) and 60983-3 (tin plated).
4 Screw terminals or Push-in Stud recommended above 20 amps.
5 Actuator color is only visible in the OFF position on Push-Pull actuators.
6 All units have one hex nut installed on bushing for use behind the panel.
7 Other colors available. Consult factory.
8 Not available with UL489A Listed breakers.
9 UL Recognized, CSA Accepted and UL Listed to 30 amps.
10 Terminal code A available with circuit codes A & B only.
11 Printed circuit board available with UL recognized approval only.
12 Auxiliary switch (flat Q.C.) available with UL recognized approvals only.

Circuit & Terminal Diagrams: in. [mm]



| TERMINAL DESCRIPTION | | DEPTH BEHIND PANEL FACE * |
|----------------------|---------------------------------------|--------------------------------|
| MAIN | TAB (Q.C) | 1.890 [48.00] |
| | SCREW (#8-32) | 1.930 [49.03] |
| | PUSH-IN STUD | 2.520 [64.00] |
| AUX. ** SWITCH | DOUBLE SOLDER TURRET TYPE | 2.035 [51.68] |
| | ROUND Q.C TYPE | 2.025 [51.44] |
| | FLAT QUICK-CONNECT FLAT SOLDER LUG | 2.129 [54.08] 2.012 [51.10] |

*DEPTH INCLUDES BEHIND PANEL HEX NUT AS SUPPLIED ON ALL UNITS.

** WHEN CALLED FOR ON MULTI-POLE UNITS, ONLY ONE AUX. SWITCH IS NORMALLY SUPPLIED, MOUNTED AS SHOWN IN FIG. A

MULTI-POLE IDENTIFICATION SCHEME

SOLDER TURRET AND ROUND QC AUX SWITCH TERMINALS

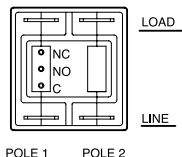


FIG. A

FLAT QC AND SOLDER LUG AUX SWITCH TERMINALS

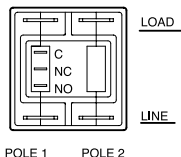
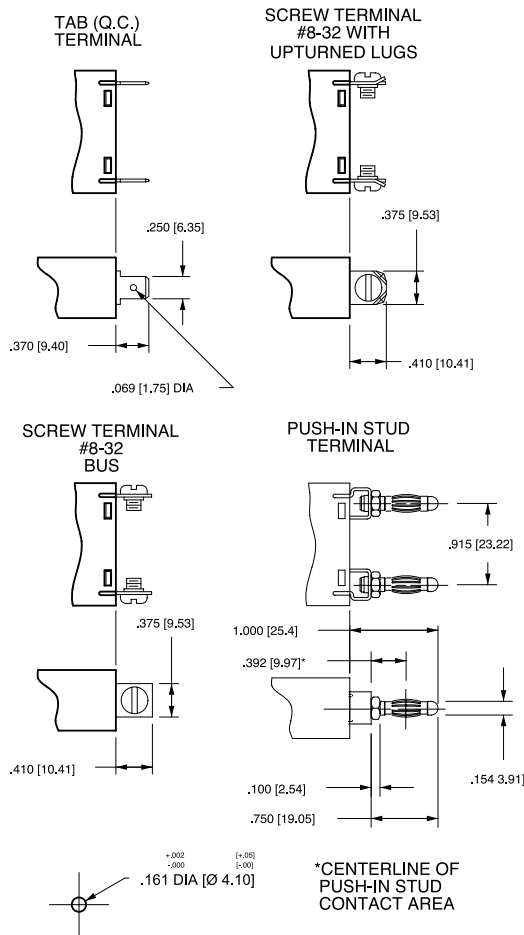
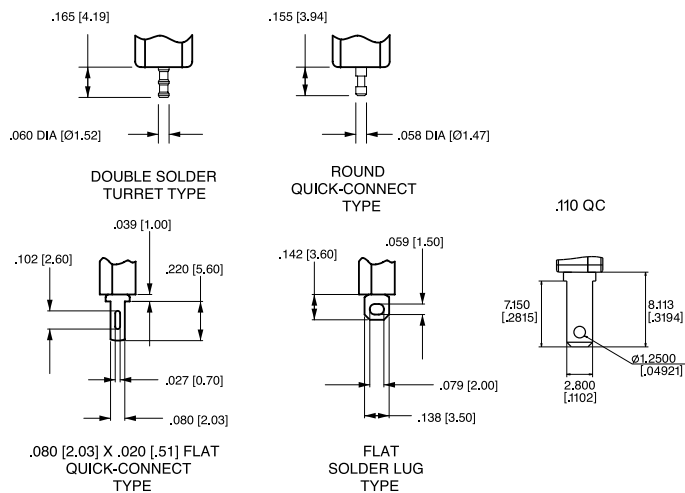


FIG. B

TERMINAL DIMENSIONAL DETAIL



AUXILIARY SWITCH TERMINALS



*AVAILABLE THROUGH SPECIAL CATALOG PART NUMBER

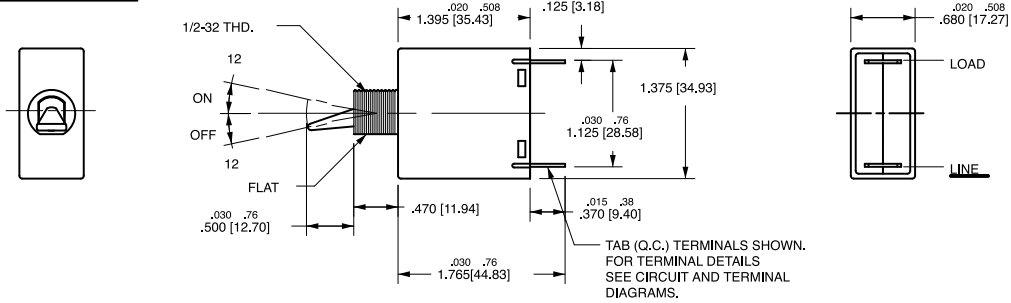
Notes:

- 1 All dimensions are in inches [millimeters].
- 2 Tolerance $\pm .020$ [.51] unless otherwise specified.

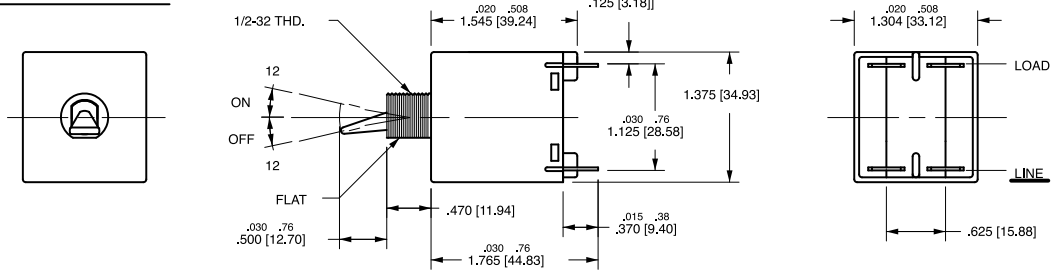
Dimensional Specifications: in. [mm]

PADDLE ACTUATOR STYLE

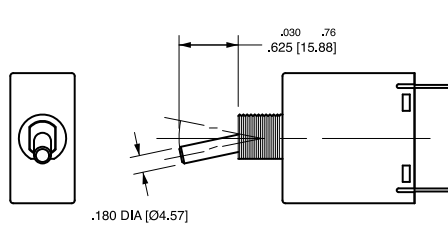
SINGLE POLE



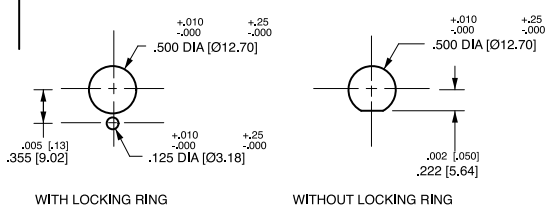
DOUBLE POLE



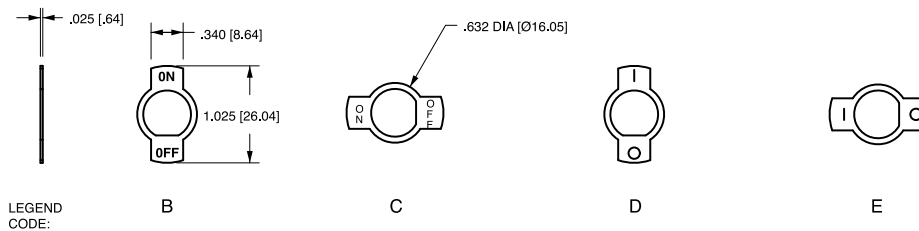
BATON ACTUATOR STYLE



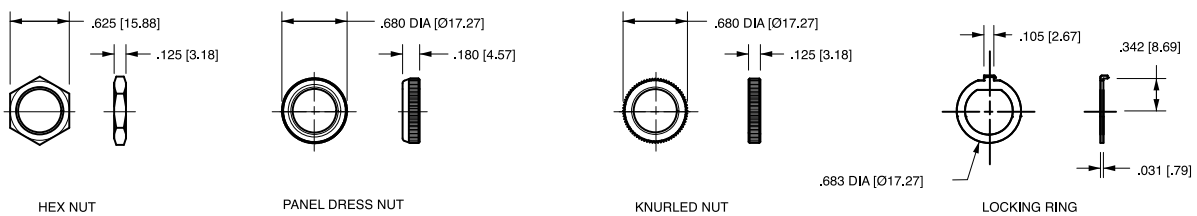
MOUNTING DETAILS



LEGEND PLATES



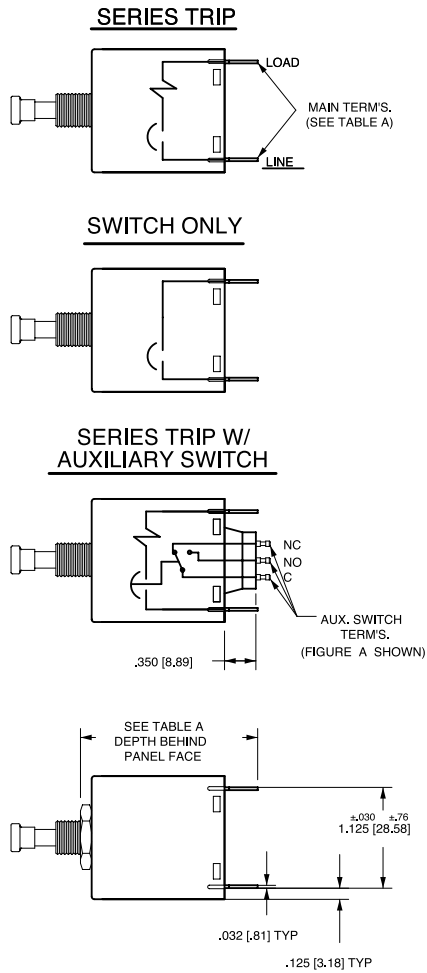
PANEL HARDWARE



Notes:

- 1 All dimensions are in inches [millimeters].
- 2 Tolerance ± 0.020 [.51] unless otherwise specified.

Circuit & Terminal Diagrams: in. [mm]



| TERMINAL DESCRIPTION | | DEPTH BEHIND PANEL FACE * |
|----------------------|---------------------------|---------------------------|
| MAIN | TAB (Q.C.) | 1.952 [49.57] |
| | SCREW (#8-32) | 1.992 [50.60] |
| | PUSH-IN STUD | 2.582 [65.58] |
| AUX. ** SWITCH | DOUBLE SOLDER TURRET TYPE | 2.097 [53.26] |
| | ROUND Q.C. TYPE | 2.087 [53.01] |
| | FLAT QUICK-CONNECT | 2.191 [55.65] |
| | FLAT SOLDER LUG | 2.074 [52.68] |

*DEPTH INCLUDES BEHIND PANEL HEX NUT AS SUPPLIED ON ALL UNITS.

**WHEN CALLED FOR ON MULTI-POLE UNITS, ONLY ONE AUX. SWITCH IS NORMALLY SUPPLIED, MOUNTED AS SHOWN IN FIG. A

MULTI-POLE IDENTIFICATION SCHEME

SOLDER TURRET AND ROUND QC AUX SWITCH TERMINALS

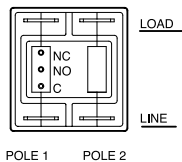


FIG. A

FLAT QC AND SOLDER LUG AUX SWITCH TERMINALS

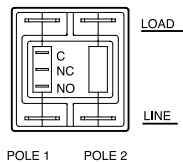
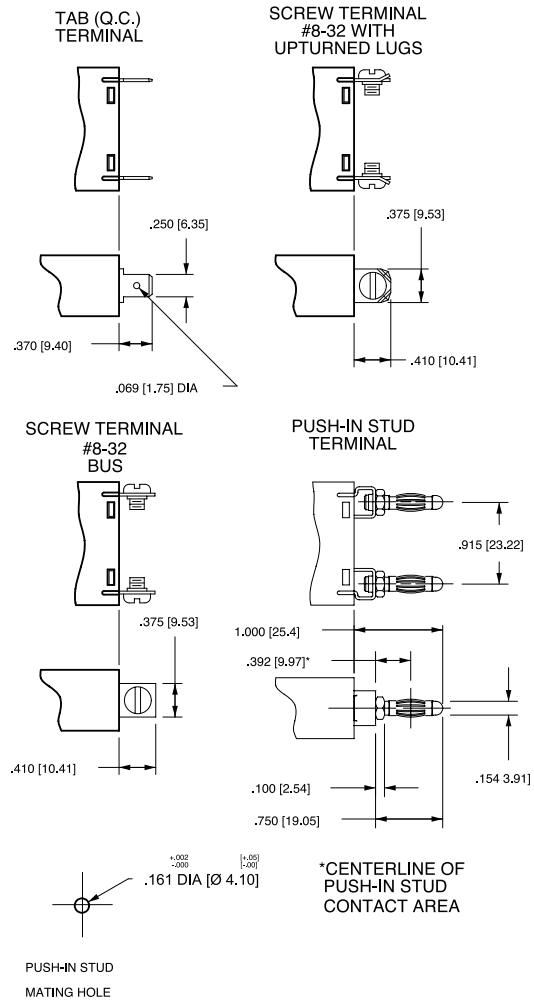


FIG. B

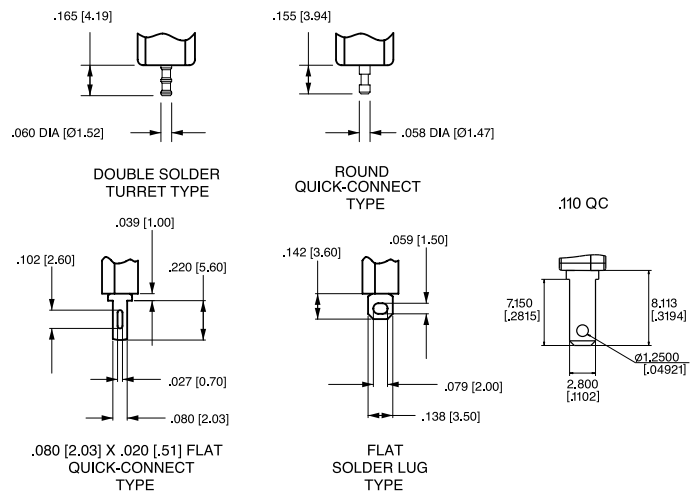
Notes:

- All dimensions are in inches [millimeters].
- Tolerance $\pm .020$ [.51] unless otherwise specified.

TERMINAL DIMENSIONAL DETAIL



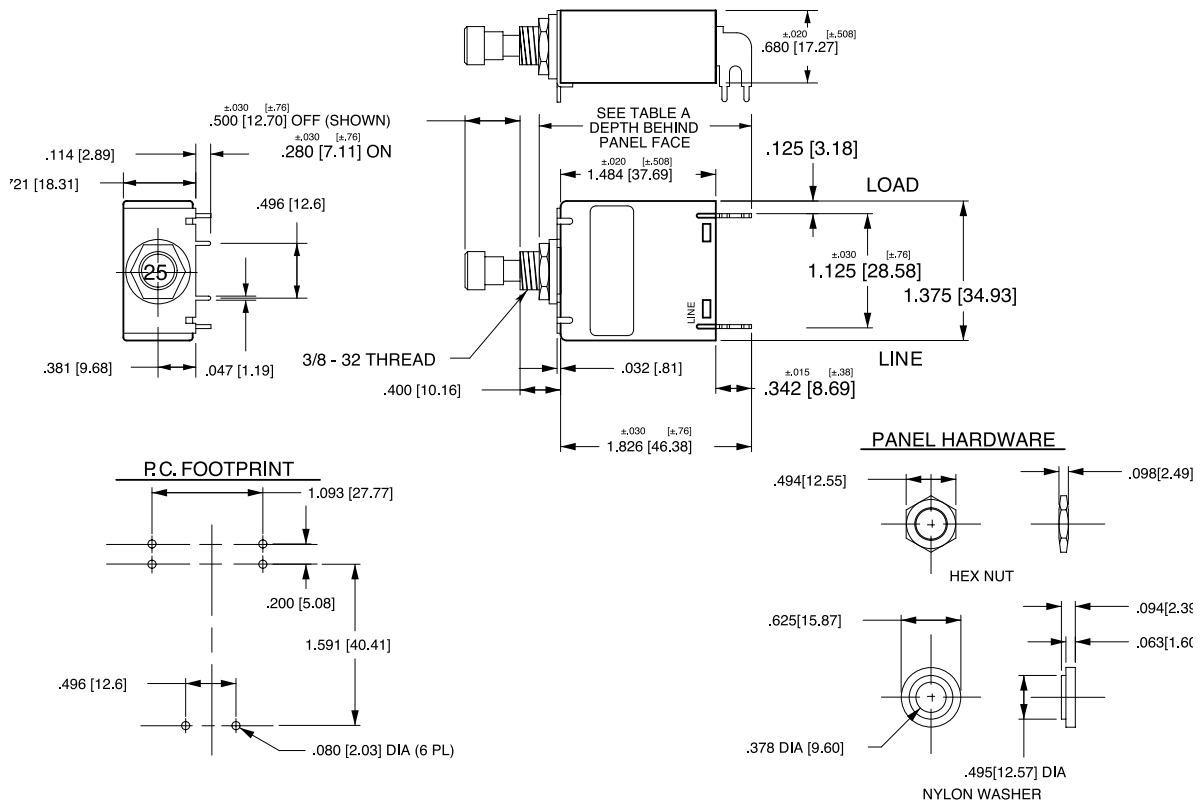
AUXILIARY SWITCH TERMINALS



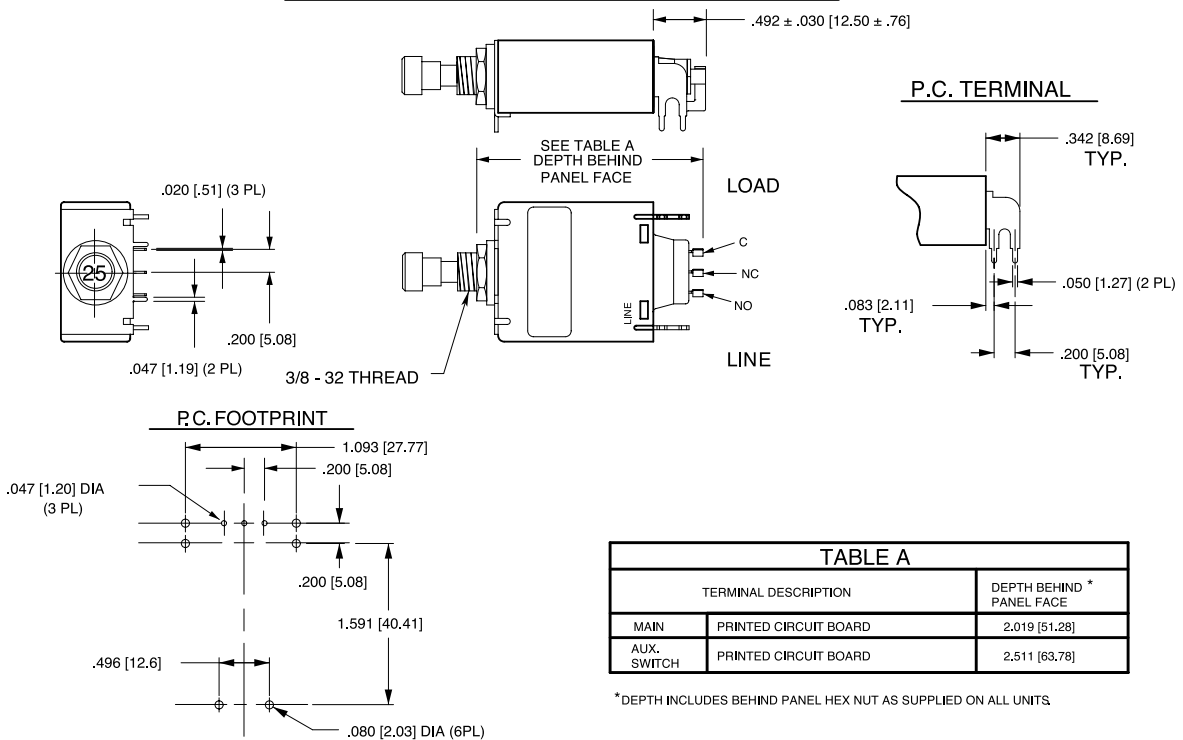
*AVAILABLE THROUGH SPECIAL CATALOG PART NUMBER

PC Terminal Diagrams: in. [mm]

PUSH-PULLTYPE SHOWN WITHOUT AUX. SWITCH



PUSH PULL TYPE SHOWN WITH AUX. SWITCH



Notes:

- All dimensions are in inches [millimeters].
- Tolerance $\pm .020 [0.51]$ unless otherwise specified.



1 SERIES
M

2 ACTUATOR ¹

Non-Illuminated single color
A Angled
B Flat

Two Color Visi-Rocker
D Indicate ON
E Indicate OFF

illuminated single color
F Angled
G Flat

| STYLE | INDICATE "ON" (CODES A, D) | INDICATE "OFF" (CODES B, E) | FLAT (CODES B, G) | ANGLED (CODES A, F) |
|------------|----------------------------|-----------------------------|-------------------|---------------------|
| VERTICAL | | | | |
| HORIZONTAL | | | | |

3 POLES
1 One

4 CIRCUIT ²

without Auxiliary Switch
B Series Trip (Current)

with Auxiliary Switch, Silver Contacts
M Series Trip (Current) Aux Switch
S³ Series Trip (Current)
T^{3,4} Series Trip (Current)
U^{3,16} Series Trip, Maintained Contacts

with Auxiliary Switch, Gold Contacts
4^{3,4} Series Trip (Current)
5^{3,16} Series Trip, Maintained Contacts
9 Series Trip (Current) Aux Switch

Terminal Type:
 .110 QC x .020 QC
 .060 Dia, Round Solder Turret
 .058 Dia, Round Q.C.
 .080 Dia x .020 Flat Q.C.
 .058 Dia, Round Q.C.
 .080 Dia x .020 Flat Q.C.
 .110 QC x .020 QC

| 5 FREQUENCY & DELAY | 14 | DC Medium |
|---------------------|----|-----------------------|
| 10 DC Instantaneous | 72 | DC, Short, Hi-Inrush |
| 12 DC Short | 74 | DC, Medium, Hi-Inrush |

6 CURRENT RATING (AMPERES)

| CODE | AMPERES | | | | | | |
|------|---------|-----|-------|-----|--------|-----|--------|
| 020 | 0.020 | 225 | 0.250 | 420 | 2.000 | 710 | 10.500 |
| 025 | 0.025 | 230 | 0.300 | 522 | 2.250 | 611 | 11.000 |
| 030 | 0.030 | 235 | 0.350 | 425 | 2.500 | 711 | 11.500 |
| 035 | 0.035 | 240 | 0.400 | 527 | 2.750 | 612 | 12.000 |
| 040 | 0.040 | 245 | 0.450 | 430 | 3.000 | 712 | 12.500 |
| 045 | 0.045 | 250 | 0.500 | 435 | 3.500 | 613 | 13.000 |
| 050 | 0.050 | 255 | 0.550 | 440 | 4.000 | 614 | 14.000 |
| 055 | 0.055 | 260 | 0.600 | 445 | 4.500 | 615 | 15.000 |
| 060 | 0.060 | 265 | 0.650 | 450 | 5.000 | 616 | 16.000 |
| 065 | 0.065 | 270 | 0.700 | 455 | 5.500 | 617 | 17.000 |
| 070 | 0.070 | 275 | 0.750 | 460 | 6.000 | 618 | 18.000 |
| 075 | 0.075 | 280 | 0.800 | 465 | 6.500 | 620 | 20.000 |
| 080 | 0.080 | 285 | 0.850 | 470 | 7.000 | 622 | 22.000 |
| 085 | 0.085 | 290 | 0.900 | 475 | 7.500 | 624 | 24.000 |
| 090 | 0.090 | 295 | 0.950 | 480 | 8.000 | 625 | 25.000 |
| 090 | 0.095 | 410 | 1.000 | 485 | 8.500 | 630 | 30.000 |
| 210 | 0.100 | 512 | 1.250 | 490 | 9.000 | | |
| 215 | 0.150 | 415 | 1.500 | 495 | 9.500 | | |
| 220 | 0.200 | 517 | 1.750 | 610 | 10.000 | | |

- Notes:
- One actuator is located in the center of each multi-pole breaker.
 - One Auxiliary Switch is supplied per breaker. Auxiliary Switch option limited to Series Trip & Switch Only circuits, and is not available in single pole illuminated breakers, or with Back Connected Screw or Push-in Stud terminals.
 - Mates with AMP .058" diameter pin receptacles: 60983-1 (gold plated) & 60983-1 (tin plated).
 - For neon bulb applications at 120VAC @ 47K, 1/4 WATT and for 250VAC applications @ 150K, 1/4 WATT, external resistors must be supplied by customer.
 - For LED (DC or rectified AC) applications, LED is mounted in the center of the rocker actuator with electrical characteristics as follows: 100 millicandela at 20mA; Maximum power dissipation = 75mW at 25°C; Maximum forward current = 25mA; Typical forward voltage = 2.1V at 20mA; Typical reverse current = 100uA at 3V. Customer supplies the proper external resistor limiting current to these values.
 - On Visi-Rocker breakers, Visi portion of rocker cannot be the same color as the bezel.
 - Rocker color for LED's and green neon lamp must be clear, smoke gray, white translucent or match color of LED or neon lamp.
 - Other colors available. Consult factory.
 - UL Recognized, CSA Accepted, UL489A Listed, and TUV Certified to 30 amps. Screw Terminals recommended above 20 amps.
 - UL489A Listed must have ON-OFF or Dual legends. TUV Certified approvals must have I - O or Dual legends.
 - Terminal code A available with circuit codes A & B only.
 - Printed circuit board available with UL recognized approval only.
 - Auxiliary switch (flat Q.C.) available with UL recognized approvals only.

7 TERMINAL

| | |
|---------------------------------|---------------------------------------|
| 1 Push-On 0.250 Tab (Q.C.) | A ¹¹ Push-In Stud |
| 2 Screw 8-32 with Upturned Lugs | P ¹² Printed Circuit Board |
| 3 Screw 8-32 (Bus Type) | |

8 ROCKER ILLUMINATION

Non-illuminated Neon ⁴
 without resistor, 120VAC/250VAC LED ^{7, 8}
 without resistor
 with resistor, 4-8 VDC
 with resistor, 9-16 VDC

| | |
|----------|-------------------------|
| A Neon | Green Glow ⁸ |
| B Red | Green |
| D Amber | Amber |
| E Green | K |
| F Blue | L |
| J Yellow | M |

9 ACTUATOR & LEGEND COLOR

| Solid Color | Actuator | Legend |
|-------------|----------|--------|
| 1 | White | Black |
| 2 | Black | White |
| 3 | Red | White |
| 4 | Green | White |
| 5 | Blue | White |
| 6 | Yellow | Black |
| 7 | Gray | Black |
| 8 | Orange | Black |

Visi-Rocker ⁶ Visi & Legend (remainder of rocker same color as bezel)

| | |
|---|--------|
| 1 | White |
| 2 | Black |
| 3 | Red |
| 4 | Green |
| 5 | Blue |
| 6 | Yellow |
| 7 | Gray |
| 8 | Orange |

Illuminated ⁷

| | |
|--------------------------|--------|
| A Actuator | Legend |
| B Clear | White |
| C Red Transparent | White |
| D Green Transparent | White |
| E Amber Transparent | White |
| F Smoke Gray Transparent | White |
| | Black |

10 LEGEND ¹⁰

| | |
|---|---|
| 1 | No Legend (Single Color or Illuminated Rocker Options Only) |
| 2 | ON - OFF Vertical |
| 3 | ON - OFF Horizontal |
| 4 | I - O Vertical |
| 5 | I - O Horizontal |
| 6 | Dual Vertical |
| 7 | Dual Horizontal |

11 BEZEL COLOR / STYLE ⁸

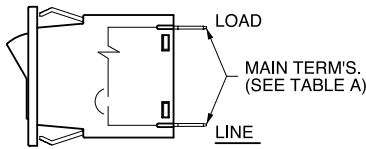
| Color | without Rockerguard | with Rockerguard |
|-------|---------------------|------------------|
| White | A | 1 |
| Black | B | 2 |
| Gray | G | 7 |

12 AGENCY APPROVAL ⁹

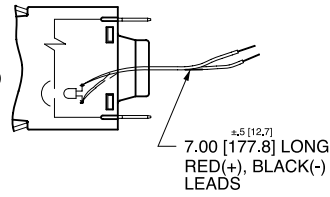
| | |
|---|---|
| J | UL489A Listed & TUV Certified |
| M | UL Recognized & CSA Accepted |
| N | TUV Certified, UL Recognized & CSA Accepted |
| T | UL489A Listed |

Circuit & Terminal Diagrams: in. [mm]

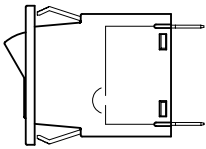
SERIES TRIP



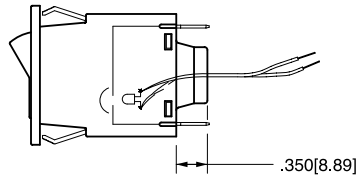
SERIES TRIP W/ ILLUMINATED ROCKER



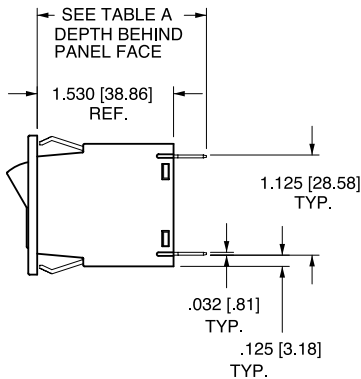
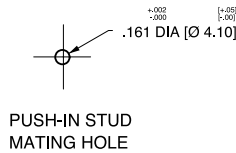
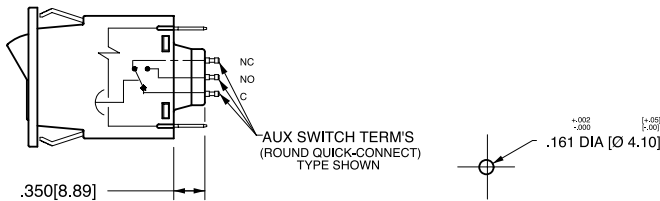
SWITCH ONLY



SWITCH ONLY W/ ILLUMINATED ROCKER

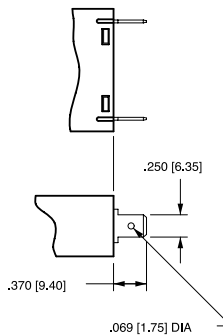


SERIES TRIP W/ AUXILIARY SWITCH

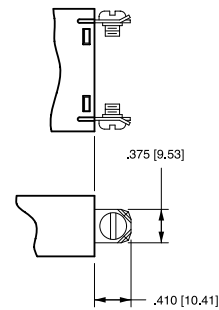


TERMINAL DIMENSIONAL DETAIL

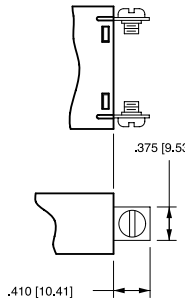
TAB (Q.C.) TERMINAL



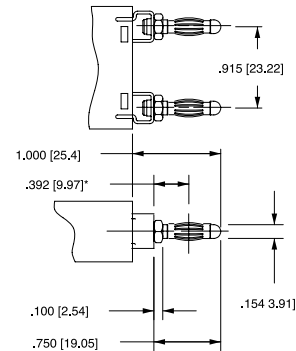
SCREW TERMINAL #8-32 WITH UPTURNED LUGS



SCREW TERMINAL #8-32 BUS

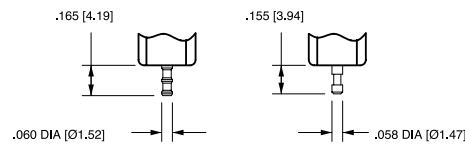


PUSH-IN STUD TERMINAL

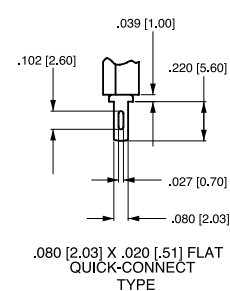


*CENTERLINE OF
PUSH-IN STUD
CONTACT AREA

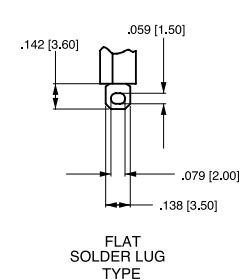
AUXILIARY SWITCH TERMINALS



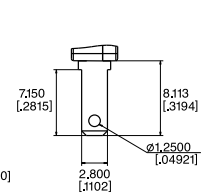
DOUBLE SOLDER TURRET TYPE



ROUND QUICK-CONNECT TYPE



.110 QC



*AVAILABLE THROUGH SPECIAL
CATALOG PART NUMBER

| TABLE - A | | |
|----------------------|---------------------------|-------------------------|
| TERMINAL DESCRIPTION | | DEPTH BEHIND PANEL FACE |
| MAIN | TAB (Q.C.) | 1.900 [48.26] |
| | SCREW (#8-32)** | 1.940 [49.28] |
| | PUSH-IN STUD | 2.530 [64.26] |
| *AUX. SWITCH | DOUBLE SOLDER TURRET TYPE | 2.045 [51.94] |
| | ROUND Q.C. TYPE | 2.035 [51.69] |
| | FLAT QUICK CONNECT | 2.139 [54.33] |
| | FLAT SOLDER LUG | 2.022 [51.36] |

* AUX. SWITCH IS NOT AVAILABLE ON SINGLE POLE ILLUMINATED UNITS. WHEN CALLED FOR ON MULTI-POLE UNITS, ONLY ONE AUX. SWITCH IS NORMALLY SUPPLIED, MOUNTED AS SHOWN ON CLA-8003.

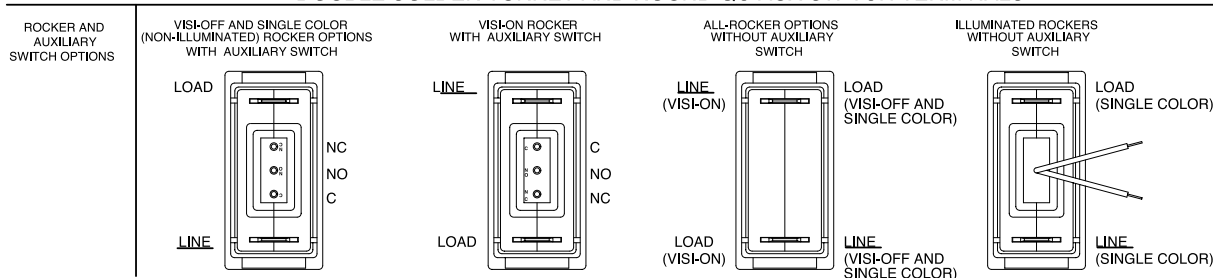
** RECOMMENDED TIGHTENING TORQUE 12-15 IN LBS [1.4-2.7 NM]

Notes:

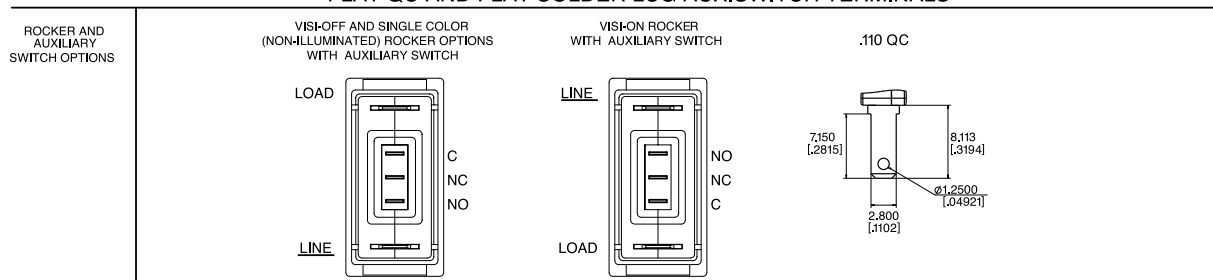
- All dimensions are in inches [millimeters].
- Tolerance $\pm .020$ [.51] unless otherwise specified.
- Schematic shown represents current trip circuit.

ONE POLE

SINGLE POLE / ROCKER BREAKERS SHOWN WITH DOUBLE SOLDER TURRET AND ROUND QC AUX. SWITCH TERMINALS

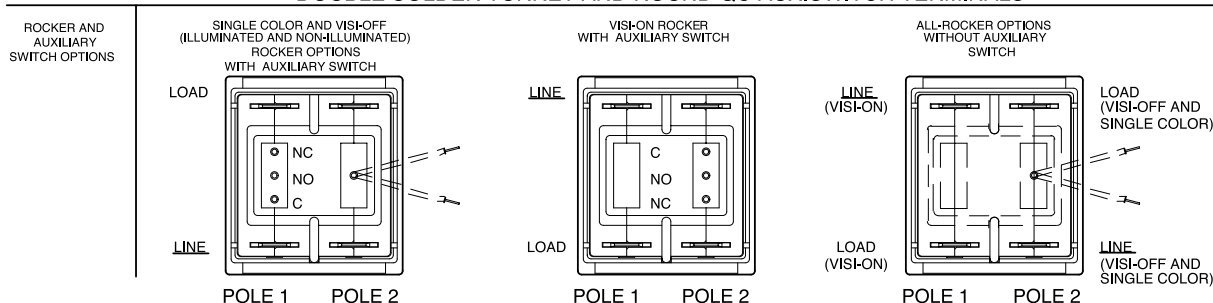


SINGLE POLE / ROCKER BREAKERS SHOWN WITH FLAT QC AND FLAT SOLDER LUG AUX. SWITCH TERMINALS

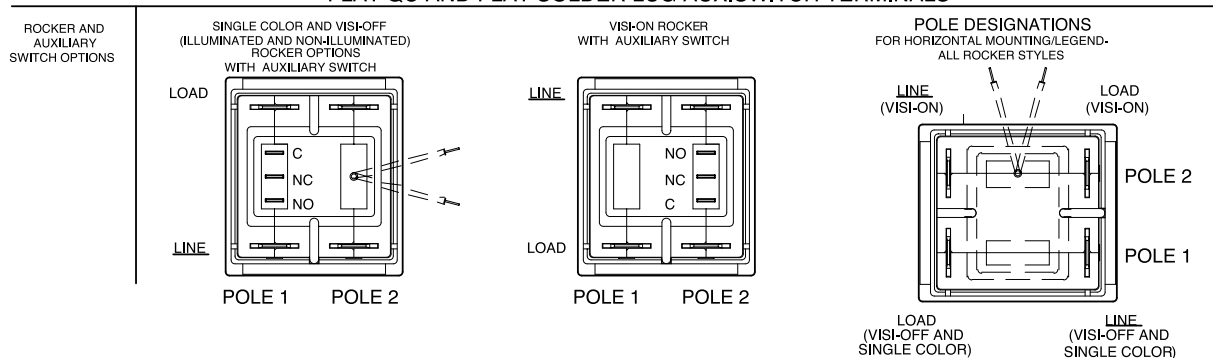


TWO POLE

DOUBLE POLE / ROCKER BREAKERS SHOWN WITH DOUBLE SOLDER TURRET AND ROUND QC AUX. SWITCH TERMINALS



DOUBLE POLE / ROCKER BREAKERS SHOWN WITH FLAT QC AND FLAT SOLDER LUG AUX. SWITCH TERMINALS



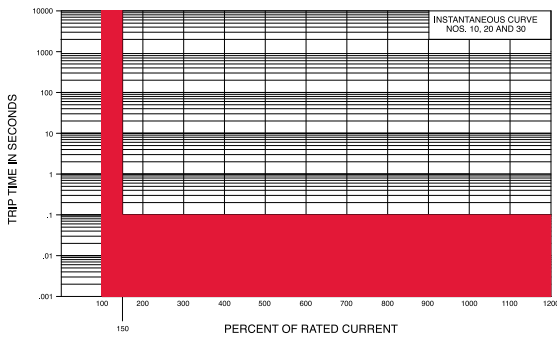
| M, MS-SERIES TIME DELAY VALUES | | | | | | | | | | |
|--------------------------------|--------------------------|-------------|-------------|-------------|-------------|-------------|-------------|-------------|-------------|-------------|
| TRIP TIME SECONDS | PERCENT OF RATED CURRENT | | | | | | | | | |
| | Delay | 100% | 135% | 150% | 200% | 400% | 600% | 800% | 1000% | 1200% |
| | 10, 20, 30 | No Trip | May Trip | .100 Max | .100 Max | .100 Max | .100 Max | .100 Max | .100 Max | .100 Max |
| 12, 22, 32, 62, 72, 92 | No Trip | .300 - 7.00 | .200 - 5.00 | .100 - 2.00 | .030 - .500 | .008 - .300 | .006 - .150 | .005 - .100 | .005 - .100 | .005 - .100 |
| 14, 24, 34, 64, 74, 94 | No Trip | 3.00 - 70.0 | 2.00 - 40.0 | 1.00 - 15.0 | .100 - 4.00 | .008 - 2.00 | .006 - .800 | .005 - .350 | .005 - .160 | .005 - .160 |

Notes:

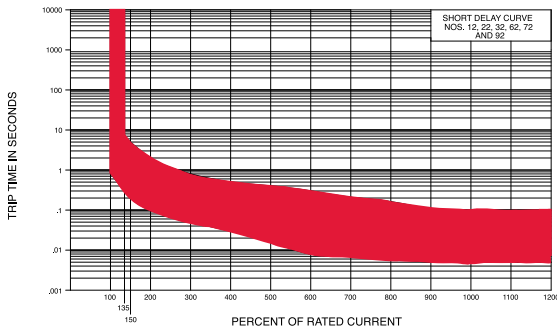
- 1 Delay Curves 12,14, 22, 24, 32, 34, 62, 64, 72, 74, 92, 94: Breakers to hold 100% and must trip at 135% of rated current and greater within the time limit shown in this curve.
- 2 Delay Curves 10, 20, 30: Breakers to hold 100% and must trip at 150% of rated current and greater within the time limit shown in this curve.
- 3 All Curves: Curve data shown represents breaker response at ambient temperature of 77°F (25°C) with no preloading. Breakers are mounted in standard wall-mount position.
- 4 The minimum inrush pulse tolerance handling capability is 12 times the rated current on standard delays and 18 times the rated current on high inrush delays. These values are based on a 60 Hz 1/2 cycle, 8.33 ms pulse. High inrush delays should be specified for applications with high initial surge currents of short duration, such as switching power supplies, highly capacitive loads and transformer loads.

Dual Rated AC/DC

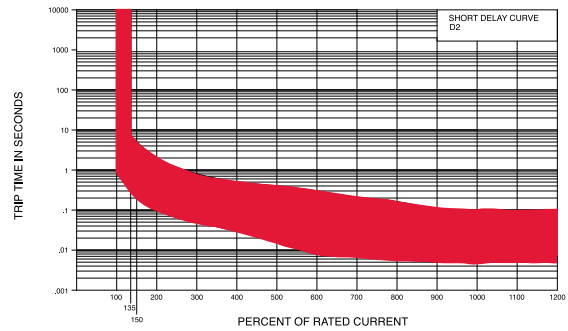
Instantaneous



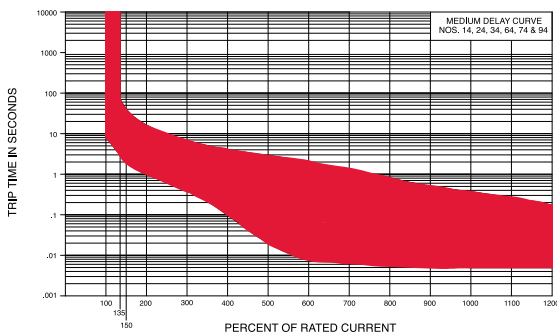
Short



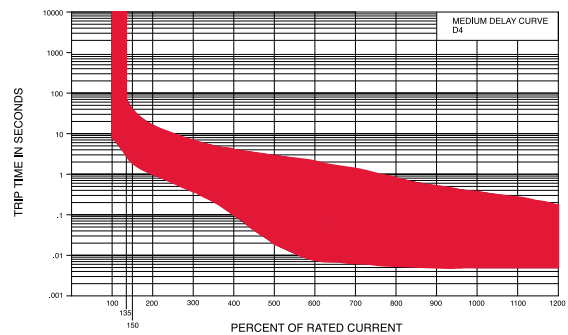
Short D2



Medium



Medium D4



Authorized Sales Representatives and Distributors

Click on a region of the map below to find your local representatives and distributors or visit www.carlingtech.com/findarep.



About Carling

Founded in 1920, Carling Technologies is a leading manufacturer of electrical and electronic switches and assemblies, circuit breakers, electronic controls, power distribution units, and multiplexed power distribution systems. With four ISO registered manufacturing facilities and technical sales offices worldwide, Carling Technologies Sales, Service and Engineering teams do much more than manufacture electrical components, they engineer powerful solutions! To learn more about Carling please visit www.carlingtech.com/company-profile.

To view all of Carling's environmental, quality, health & safety certifications please visit www.carlingtech.com/environmental-certifications

Worldwide Headquarters

Carling Technologies, Inc.
60 Johnson Avenue, Plainville, CT 06062
Phone: 860.793.9281 **Fax:** 860.793.9231
Email: sales@carlingtech.com

Northern Region Sales Office: nrsm@carlingtech.com
Southeast Region Sales Office: sersm@carlingtech.com
Midwest Region Sales Office: mrsm@carlingtech.com
West Region Sales Office: wrsm@carlingtech.com
Latin America Sales Office: larsm@carlingtech.com

Asia-Pacific Headquarters

Carling Technologies, Asia-Pacific Ltd.,
Suite 1607, 16/F Tower 2, The Gateway,
Harbour City, 25 Canton Road,
Tsimshatsui, Kowloon, Hong Kong
Phone: Int + 852-2737-2277 **Fax:** Int + 852-2736-9332
Email: sales@carlingtech.com.hk

Shenzhen, China: shenzhen@carlingtech.com
Shanghai, China: shanghai@carlingtech.com
Pune, India: india@carlingtech.com
Kaohsiung, Taiwan: taiwan@carlingtech.com
Yokohama, Japan: japan@carlingtech.com

Europe | Middle East | Africa Headquarters

Carling Technologies LTD
4 Airport Business Park, Exeter Airport,
Clyst Honiton, Exeter, Devon, EX5 2UL, UK
Phone: Int + 44 1392.364422 **Fax:** Int + 44 1392.364477
Email: ltd.sales@carlingtech.com

Germany: gmbh@carlingtech.com
France: sas@carlingtech.com



Carling Technologies®

Innovative Designs. Powerful Solutions.

X-ON Electronics

Largest Supplier of Electrical and Electronic Components

Click to view similar products for [Circuit Breakers](#) category:

Click to view products by [Carling](#) manufacturer:

Other Similar products are found below :

[M39019/04-249S](#) [M39019/04-313S](#) [M55629/1-001](#) [M55629/1-016](#) [M55629/1-018](#) [M55629/1-021](#) [M55629/1-033](#) [M55629/1-036](#) [M55629/1-046](#) [M55629/1-048](#) [M55629/1-058](#) [M55629/1-060](#) [M55629/1-067](#) [M55629/1-070](#) [M55629/1-079](#) [M55629/1-084](#) [M55629/1-085](#) [M55629/1-101](#) [M55629/1-108](#) [M55629/1-109](#) [M55629/11-102](#) [M55629/1-120](#) [M55629/12-045](#) [M55629/12-046](#) [M55629/1-243](#) [M55629/1-330](#) [M55629/1-331](#) [M55629/1-351](#) [M55629/1-366](#) [M55629/1-387](#) [M55629/1-388](#) [M55629/1-401](#) [M55629/1-430](#) [M55629/1-450](#) [M55629/1-453](#) [M55629/2-022](#) [M55629/2-037](#) [M55629/2-082](#) [M55629/2-099](#) [M55629/2-101](#) [M55629/2-102](#) [M55629/2-115](#) [M55629/2-116](#) [M55629/2-183](#) [M55629/21-HM-HM](#) [M55629/21-NS-NS](#) [M55629/21-SK-UK](#) [M55629/22-NR-NR-NR](#) [M55629/22-RS-RS-RS](#) [M55629/22-TM-TM-TM](#)