

H-183-4

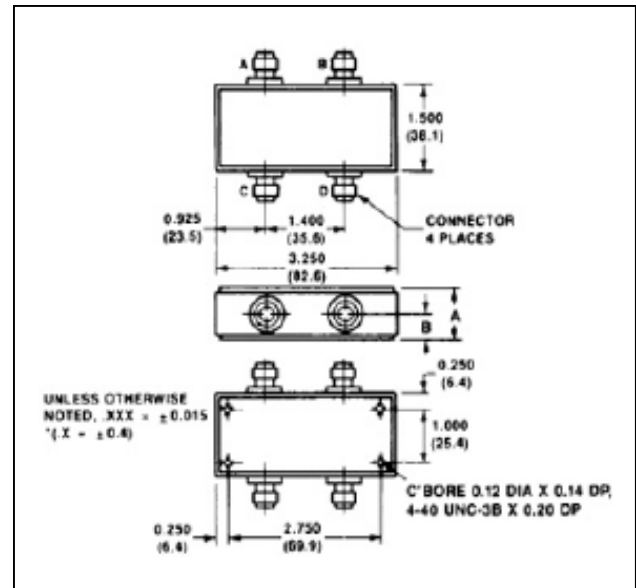
Microwave Hybrid Junction,
30 MHz - 3 GHz

Rev. V2

Features

- 0° - 180° Hybrid
- Seven Octave Frequency Range

C-11



Guaranteed Specifications*: From -55°C to +85°C

Frequency Range		30-3000 MHz
Insertion Loss (less coupling)	30-100 MHz 100-1500 MHz 1500-3000 MHz	1.2 dB Max 1.5 dB Max 2.5 dB Max
Isolation	30-100 MHz 100-1500 MHz 1500-3000 MHz	25 dB Min 20 dB Min 20 dB Min
Amplitude Balance	2-2000 MHz	0.4 dB Max
VSWR	30-100 MHz 100-1500 MHz 1500-3000 MHz	1.6:1 Max 1.6:1 Max 2.5:1 Max
Phase Balance	30-100 MHz 100-1500 MHz 1500-3000 MHz	2° Max 7.5° Max 15° Max

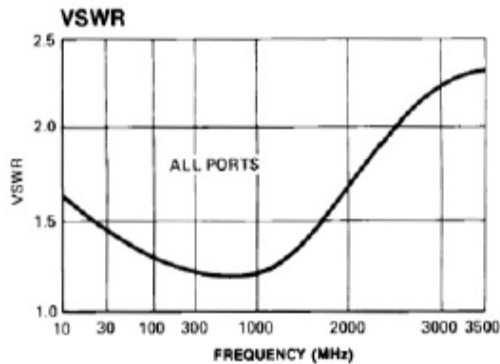
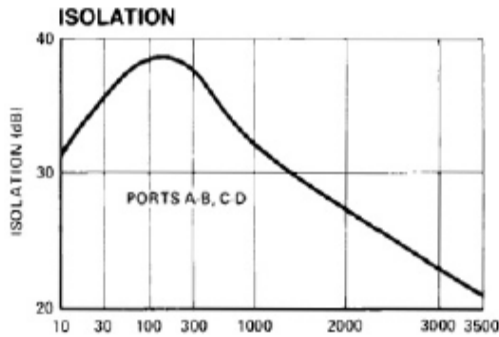
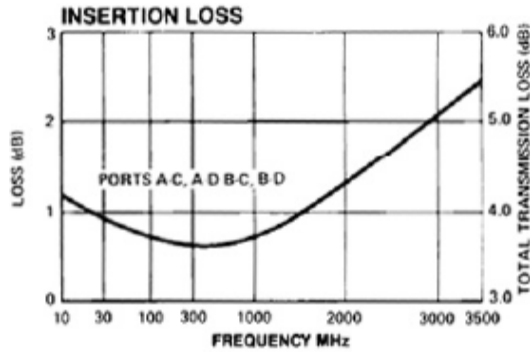
Operating Characteristics

	A	B
H-183-4	1.207 ± 0.020 (30.6 ± 0.5)	0.592 ± 0.020 (15.03 ± 0.5)

Parameter	Absolute Maximum
Impedance	50 Ohms Nominal
Input Power	5.0 Watt Max
Environmental	MIL-STD-883 screening available.

* All specifications apply with 50 ohm source and load impedance. This product contains elements protected by United States Patent Number 3,508,171.

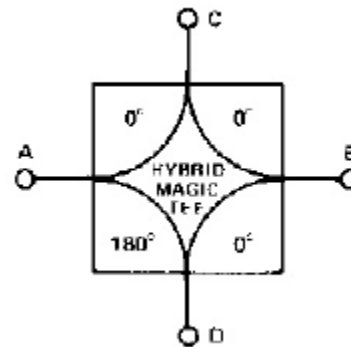
Typical Performance Curves



Ordering Information

Part Number	Package
H-183-4 SMA	Connectorized

Functional Diagram



X-ON Electronics

Largest Supplier of Electrical and Electronic Components

Click to view similar products for [RF Wireless Misc](#) category:

Click to view products by [MACOM](#) manufacturer:

Other Similar products are found below :

[R415720000](#) [HMC598-SX](#) [RX98-4](#) [MABT-011000-14235P](#) [W2SW0001-SHLD](#) [HMC1110-SX](#) [HMC579-SX](#) [R417703118](#) [MA4BN1840-1](#)
[HMC443LP4ETR](#) [HMC561LP3ETR](#) [STHV DAC-253MF3](#) [ADL5390ACPZ-REEL7](#) [ADA4304-2ACPZ-R2](#) [ADA4304-2ACPZ-R7](#)
[ADA4304-3ACPZ-R2](#) [ADA4304-4ACPZ-R2](#) [ADA4304-4ACPZ-R7](#) [ADA4304-3ACPZ-R7](#) [HMC760LC4B](#) [HMC577LC4B](#) [HMC370LP4E](#)
[HMC443LP4E](#) [HMC444LP4E](#) [HMC445LP4E](#) [HMC448](#) [HMC448LC3B](#) [HMC1096LP3ETR](#) [HMC573LC3BTR](#) [HMC575LP4](#) [HMC576](#)
[HMC576LC3BTR](#) [HMC578](#) [HMC578LC3B](#) [HMC578-SX](#) [HMC598](#) [HMC814](#) [HMC814LC3B](#) [HMC814LC3BTR](#) [SML1](#) [MADRCC0004](#)
[MADRCC0007](#) [MAX2045ETJ+](#) [CMX881E1](#) [SA606DK/01,118](#) [MAX1005CEE+](#) [MAX9990ETP+](#) [MADRCC0005](#) [MADRCC0006](#)
[HMC448LC3BTR](#)