

# HH- / HHS-109

## Hybrid Junction, 5 - 200 MHz

Rev. V3

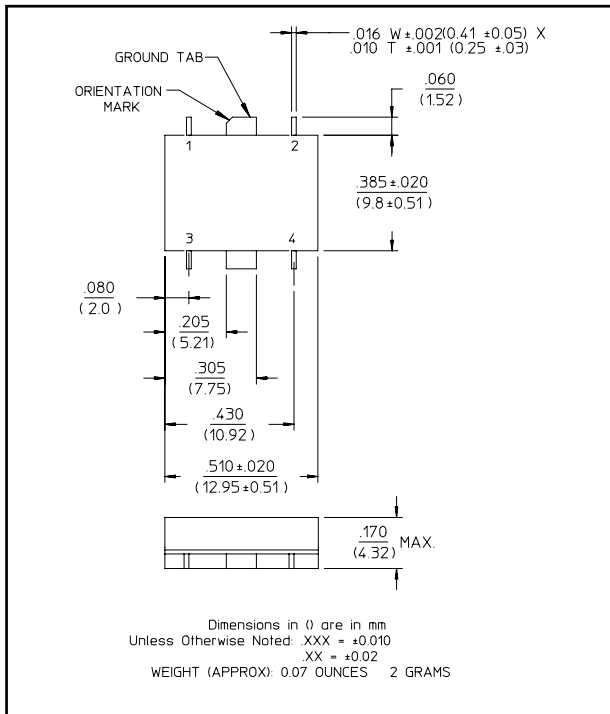
### Features

- 0° - 180° Hybrid with High Isolation
- Usable from 500 KHz - 500 MHz
- MIL-STD-202 Screening Available

### Description

3 dB Hybrids are ideal for dividing a signal into two signals of equal amplitude and a constant 90° or 180° phase differential and for Quadrature combining or performing summation/differential combining.

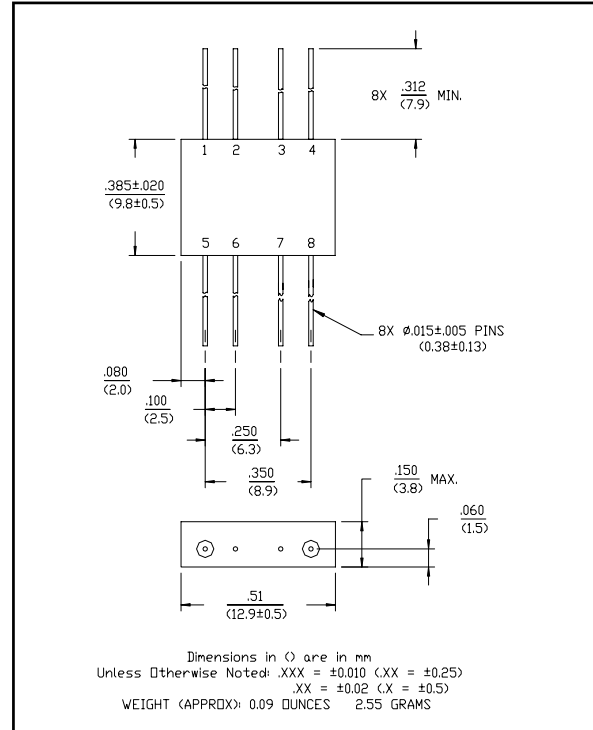
### SF-1 (HHS-109)



### Pin Configuration (HHS-109)

Pin No.	Function	Pin No.	Function
1	A	3	B
2	C	4	D

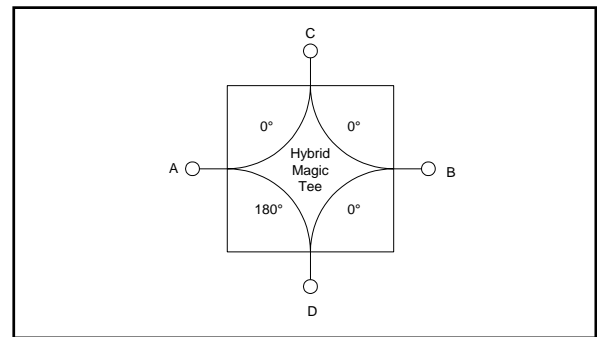
### FP-2 (HH-109)



### Pin Configuration (HH-109)

Pin No.	Function	Pin No.	Function
1	A	5	B
2	GND	6	GND
3	GND	7	GND
4	C	8	D

### Functional Diagram



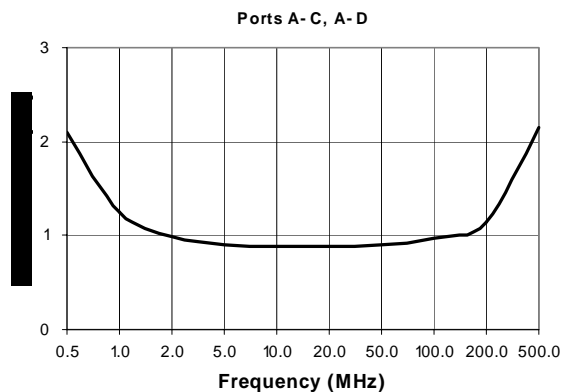
### Electrical Specifications<sup>1</sup>: $T_A = -55^\circ\text{C}$ to $+85^\circ\text{C}$

Parameter	Test Conditions	Frequency	Units	Min	Typ	Max
Insertion Loss	Less Coupling	5 - 200 MHz	dB	—	—	1.4
Isolation		5 - 100 MHz	dB	30	—	—
		100 - 200 MHz	dB	25	—	—
Amplitude Balance	—	5 - 200 MHz	dB	—	—	0.3
VSWR	—	5 - 100 MHz	Ratio	—	—	1.5:1
		100 - 200 MHz	Ratio	—	—	1.7:1
Phase Balance	—	5 - 100 MHz	°	—	—	4
		100 - 200 MHz	°	—	—	8
Impedance	—	—	Ohms	—	50	—
Input Power	—	—	Watts	—	—	0.5

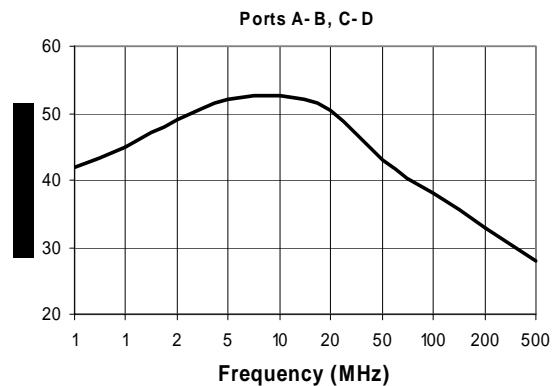
1. All specifications apply with 50 ohm source and load impedance.

### Typical Performance Curves

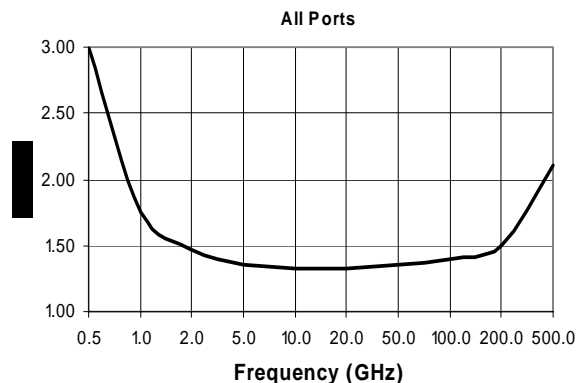
**Insertion Loss**



**Isolation**



**VSWR**



### Ordering Information

Part Number	Package
HH-109 PIN	FP-2
HHS-109 PIN	SF-1

## X-ON Electronics

Largest Supplier of Electrical and Electronic Components

*Click to view similar products for [Signal Conditioning](#) category:*

*Click to view products by [MACOM](#) manufacturer:*

Other Similar products are found below :

[MAPDCC0001](#) [MAPDCC0004](#) [PD0409J5050S2HF](#) [880157](#) [HHS-109-PIN](#) [DC1417J5005AHF](#) [AFS14A30-2185.00-T3](#) [AFS14A35-1591.50-T3](#) [DS-323-PIN](#) [B39321R801H210](#) [1A0220-3](#) [JP510S](#) [LFB212G45SG8C341](#) [LFB322G45SN1A504](#) [LFL182G45TC3B746](#) [SF2159E](#) [30057](#)  
[FM-104-PIN](#) [CER0813B](#) [MAPDCC0005](#) [3A325](#) [40287](#) [41180](#) [ATB3225-75032NCT](#) [BD0810N50100AHF](#) [BD2425J50200AHF](#)  
[C5060J5003AHF](#) [JHS-115-PIN](#) [JP503AS](#) [DC0710J5005AHF](#) [DC2327J5005AHF](#) [DC3338J5005AHF](#) [43020](#) [LFB2H2G60BB1C106](#)  
[LFL15869MTC1B787](#) [X3C19F1-20S](#) [XC3500P-20S](#) [10013-20](#) [SF2194E](#) [CDBLB455KCAX39-B0](#) [TGL2208-SM, EVAL](#) [RF1353C](#)  
[PD0922J5050D2HF](#) [1E1305-3](#) [1G1304-30](#) [B0922J7575AHF](#) [2020-6622-20](#) [TP-102-PIN](#) [TP-103-PIN](#) [BD1222J50200AHF](#)