

Dual Anti-Parallel Non-Magnetic PIN Diode RoHS Compliant

V1

Features

- Designed for MRI applications
- Anti-Parallel Self Bias Arrangement
- Non-Magnetic Surface Mount Package
- SPC Process for Superior Parametric Repeatability
- RoHS Compliant with 260°C reflow compatibility

Description

The MA45471 device acts as a passive switch using silicon PIN diodes in a surface mount non-magnetic package. The PIN diode pair are arranged in an anti-parallel configuration and encapsulated with a non-conductive epoxy resin.

Applications

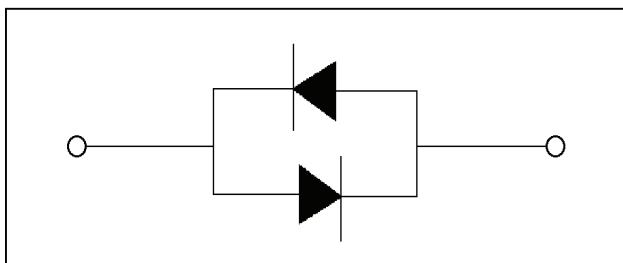
The MA45471 is well suited for MRI Passive switching applications. The PIN diodes become a high Q, R-C network under small signal and behave as an effective passive rectifier or short circuit under high RF Signal to tune and de-tune the resonant MRI tank circuit. The anti-parallel arrangement provides for more efficient RF power handling.

Absolute Maximum Ratings @ $T_A=+25\text{ }^\circ\text{C}$ (Unless Otherwise Noted) ¹

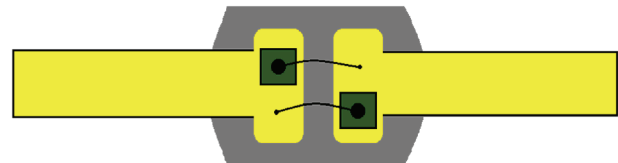
Parameter	Absolute Maximum
Reverse Voltage	75V
Forward Current	2A
Power Dissipation (per diode)	1.7 W
Operating Temperature	-55 °C to +125 °C
Storage Temperature	-55 °C to +125 °C
Junction Temperature	+175 °C

1. Operation of this device above any one of these parameters may cause permanent damage.
2. Please refer to application note [M538](#) for surface mounting instructions
3. Total current per diode= I (rms) + I (dc) @ +25C

Schematic



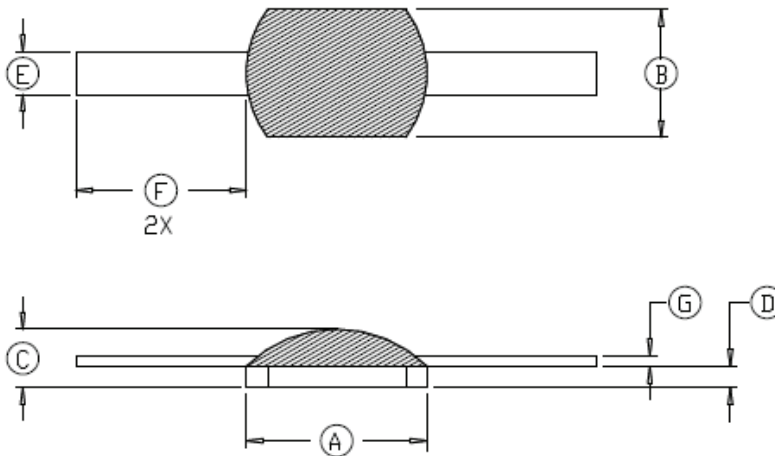
Internal Construction



Electrical Performance @ T_A=+25 °C

Part Number	Junction Capacitance	Total Capacitance	Breakdown Voltage	Forward Voltage	Δ Forward Voltage	Carrier Lifetime
	f = 1MHz V _r = 0V	f = 1MHz V _r = 0V	I _r = 10μA	I _f = 20uA	I _f = 20uA (between each diode)	I _f = 10mA / I _r = 6 mA
	(pF)	(pF)	(V)	(V)	(mV)	(nS)
MA45471	1.25 - 1.50	3.0 - 3.5	75	0.5 - 0.8	+/-20	200

Case Style 1134



DIM.	INCHES		MILLIMETERS	
	MIN.	MAX.	MIN.	MAX.
A	.162	.178	4.11	4.52
B	.112	.128	2.84	3.25
C	-	.055	-	1.40
D	.017	.023	0.43	0.58
E	.036	.044	0.91	1.12
F	.150	-	3.81	-
G	.008	.012	0.20	0.30

X-ON Electronics

Largest Supplier of Electrical and Electronic Components

Click to view similar products for [PIN Diodes](#) category:

Click to view products by [MACOM](#) manufacturer:

Other Similar products are found below :

[MA45471](#) [MA4PK3004](#) [MA4SPS502](#) [APD2220-000](#) [BAR 63-02L E6327](#) [BAR 64-02EL E6327](#) [BAR 90-02ELS E6327](#)
[BAR9002ELSE6327XTSA1](#) [1SV271TPH3F](#) [APD0810-000](#) [MA4GP907](#) [MA4L032-186](#) [MA4P7435NM-1091T](#) [MA4PK2000](#) [MA4PK2001](#)
[MA4PK2002](#) [MA4PK2003](#) [MA4PK2004](#) [MADP-007167-12250T](#) [BAT 15-04R E6152](#) [RKP300KJ#P1](#) [HVB187YPTR-E](#)
[BAR61E6327HTSA1](#) [BAR 64-02V H6327](#) [MA4SPS421](#) [MA4PBL027](#) [MA4P404-30](#) [MA4L022-30](#) [CLA4610-000](#) [BAR 89-02LRH E6327](#)
[UM7108B](#) [1SV308,L3F](#) [UM7104D](#) [5082-3077](#) [DMF2822-000](#) [GC4723-42](#) [UM4301B](#) [UM4301D](#) [SMP1321-000](#) [DMJ2852-000](#) [M17X1008](#)
[MA4P7447ST-287T](#) [MA4GP022-277](#) [UM4001SM](#) [UMX7201SM](#) [GC4271-01](#) [UM7006B](#) [MADP-000015-000030](#) [MGPN1503-C01A](#)
[MPP4203-206](#)