

Digital Attenuator, 6-Bit, Serial / Parallel Control 31.5 dB, 0.7 - 6.0 GHz

Rev. V2

Features

- Integrated CMOS/TTL Compatible Driver
- Parallel & Serial (P/S) Control with power-up state selection
- Insertion Loss: 1.6 dB typical @ 2.1 GHz
- IP3: 50 dBm typical @ 2 GHz
- Attenuation Accuracy:
+/- (0.4 + 4% of attenuation setting) dB
- 0.5-dB Attenuation Steps to 31.5 dB
- Useable from 0.4 to 8.0 GHz
- Lead-Free 4 mm 24-Lead PQFN Package
- Halogen-Free "Green" Mold Compound
- RoHS* Compliant and 260°C Re-flow Compatible
- Small Relative Phase Variation per Bit

Description

The MAAD-000523 is a 6-bit, 0.5-dB step GaAs MMIC digital attenuator in a lead-free 4 mm 24 lead PQFN surface mount plastic package. This device is ideally suited for use where high accuracy, very low power consumption and low intermodulation products are required. Typical applications include Cellular Basestation R_x/T_x Line-up, Femtocells, and other gain / level control circuits.

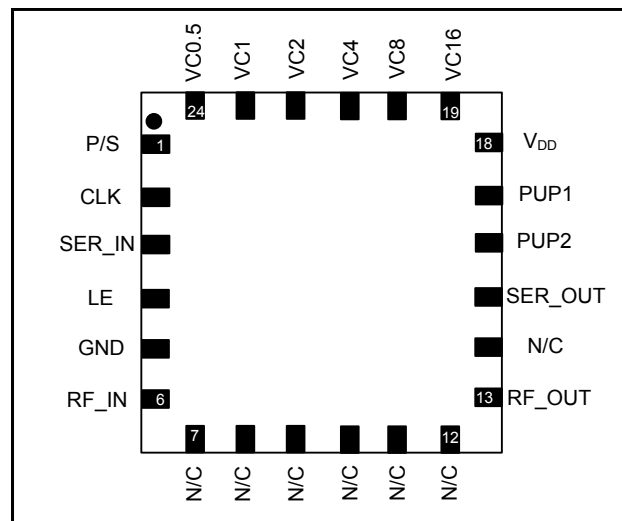
This attenuator is controlled with either a SPI compatible serial interface or a 6 bit parallel word.

Ordering Information ¹

| Part Number | Package |
|--------------------|-----------------|
| MAAD-000523-TR1000 | 1000 piece reel |
| MAAD-000523-TR3000 | 3000 piece reel |
| MAAD-000523-001SMB | Sample Board |

1. Reference Application Note M513 for reel size information.
2. All sample boards include 5 loose parts.

Functional Schematic ^{3,4}



3. Blocking capacitors are required on all RF ports.
4. For optimum RF performance all N/C's should be terminated to GND.

Pin Configuration

| Pin No. | Function | Pin No. | Function |
|---------|---------------|---------|-----------------|
| 1 | P/S | 13 | RF_OUT |
| 2 | CLK | 14 | No Connection |
| 3 | Serial IN | 15 | Serial OUT |
| 4 | LE | 16 | PUP2 |
| 5 | Ground | 17 | PUP1 |
| 6 | RF_IN | 18 | V _{DD} |
| 7 | No Connection | 19 | VC16 |
| 8 | No Connection | 20 | VC8 |
| 9 | No Connection | 21 | VC4 |
| 10 | No Connection | 22 | VC2 |
| 11 | No Connection | 23 | VC1 |
| 12 | No Connection | 24 | VC0.5 |

* Restrictions on Hazardous Substances, European Union Directive 2002/95/EC.

Digital Attenuator, 6-Bit, Serial / Parallel Control 31.5 dB, 0.7 - 6.0 GHz

Rev. V2

Electrical Specifications ⁵: $T_A = 25^\circ\text{C}$, $Z_0 = 50\ \Omega$, $V_{DD} = 5\ \text{V}$, $V_C = 0/+5\ \text{V}$ ⁶

| Parameter | Test Conditions | Units | Min. | Typ. | Max. |
|-------------------------------------|--|---|------|-------|------|
| Reference Insertion Loss | 0.7 GHz | dB | — | 1.3 | — |
| | 2.1 GHz | | — | 1.6 | 2.3 |
| | 4.0 GHz | | — | 2.0 | — |
| | 6.0 GHz | | — | 2.5 | — |
| Attenuation Accuracy | 0.7 - 6.0 GHz | ± (0.4 + 4% of attenuation setting) dB typ. | | | |
| VSWR | 0.7 - 6.0 GHz | Ratio | — | 1.2:1 | — |
| Trise, Tfall | 10% to 90% RF, 90% to 10% RF | ns | — | 70 | — |
| Ton, Toff | 50% Control to 90% RF, 50% Control to 10% RF | ns | — | 100 | — |
| Settling Time Loss Delta (Gate Lag) | RF Loss Difference within 30 μs to 500 μs @ 2 GHz and 500 μs Pulse | dB | — | 0.2 | — |
| Transients | In Band | mV | — | 50 | — |
| Input P1dB | 2.0 GHz | dBm | — | 25 | — |
| IP ₂ | 2-Tone, +10 dBm/tone, 1 MHz Spacing 2.0 - 6.0 GHz | dBm | — | 75 | — |
| IP ₃ | 2-Tone, +10 dBm/tone, 1 MHz Spacing 2.0 - 6.0 GHz | dBm | — | 50 | — |
| I _{DD} | V _{DD} = 5V | μA | 0 | — | 600 |

5. External DC blocking capacitors are required on all RF ports. Loss varies at 0.003 dB/°C.

Truth Table ⁶

| VC16 | VC8 | VC4 | VC2 | VC1 | VC0.5 | Attenuation (dB) |
|------|-----|-----|-----|-----|-------|------------------|
| 1 | 1 | 1 | 1 | 1 | 1 | Reference IL |
| 1 | 1 | 1 | 1 | 1 | 0 | 0.5 |
| 1 | 1 | 1 | 1 | 0 | 1 | 1 |
| 1 | 1 | 1 | 0 | 1 | 1 | 2 |
| 1 | 1 | 0 | 1 | 1 | 1 | 4 |
| 1 | 0 | 1 | 1 | 1 | 1 | 8 |
| 0 | 1 | 1 | 1 | 1 | 1 | 16 |
| 0 | 0 | 0 | 0 | 0 | 0 | 31.5 |

6. 0 = 0 to 0.8V, 1 = 2 to 5V.

Absolute Maximum Ratings ^{7,8}

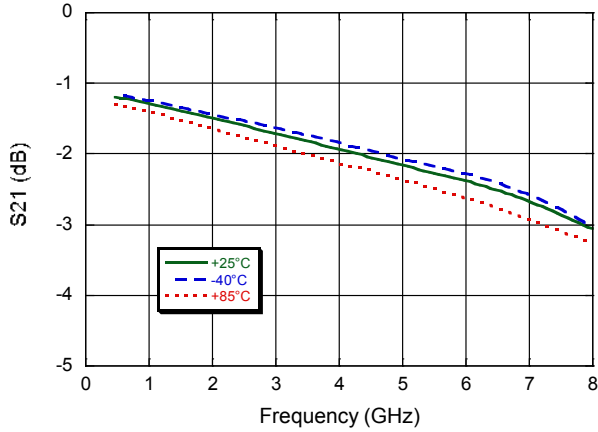
| Parameter | Absolute Maximum |
|-------------------------------|---------------------------------|
| Input Power 700 - 6000 MHz | +27 dBm |
| Operating Voltage | 6 V |
| Control Voltage | -0.5 V ≤ V _C ≤ 5.5 V |
| Operating Temperature | -40°C to +85°C |
| Junction Temperature | +150°C |
| Storage Temperature | -65°C to +150°C |

7. Exceeding any one or combination of these limits may cause permanent damage to this device.

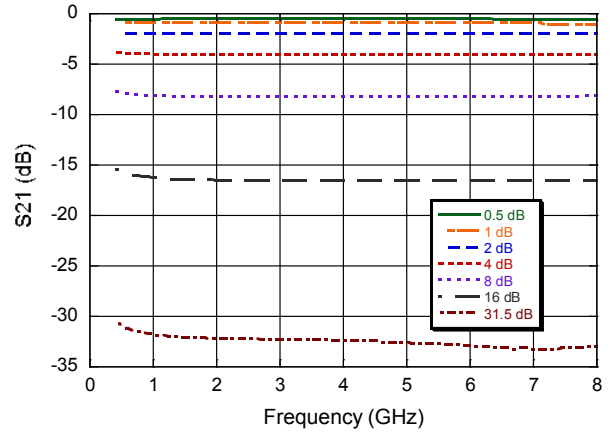
8. M/A-COM Technology Solutions does not recommend sustained operation near these survivability limits.

Typical Performance Curves

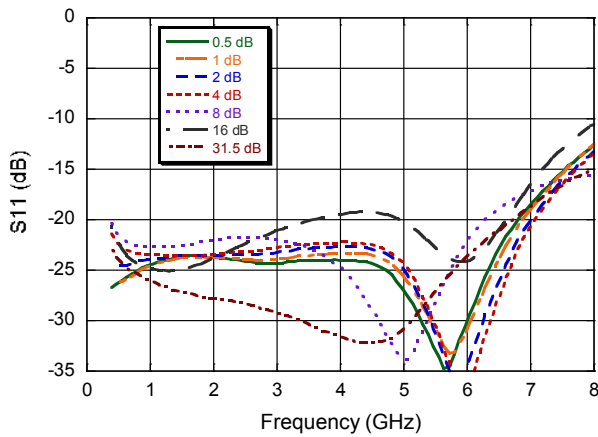
Insertion Loss



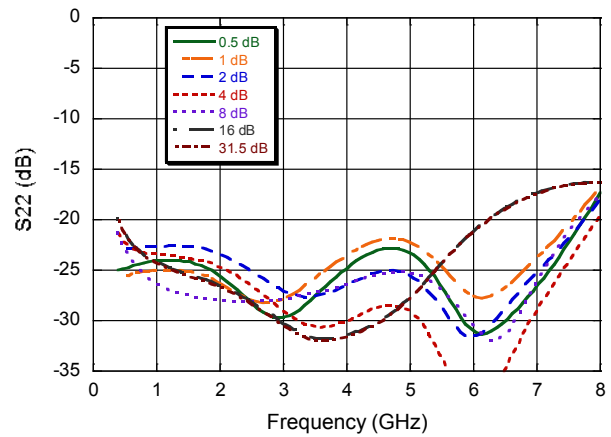
Relative Attenuation across all major states



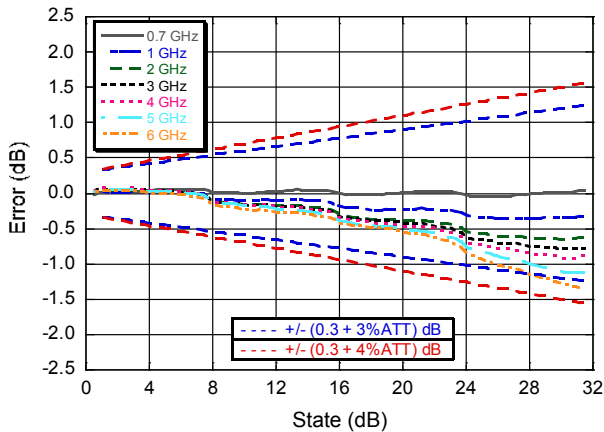
Input Return Loss, across all attenuation states



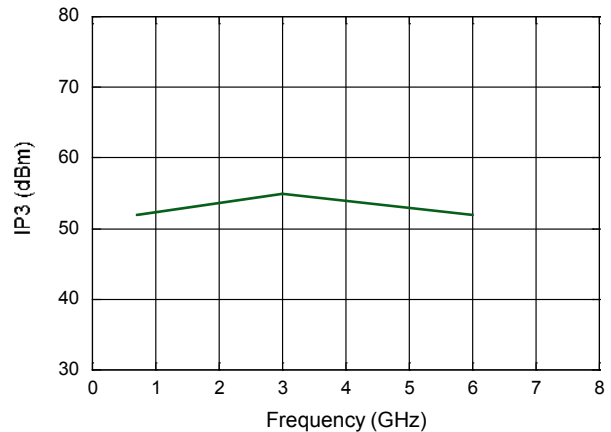
Output Return Loss, across all attenuation states



Step Error vs. State over Frequency

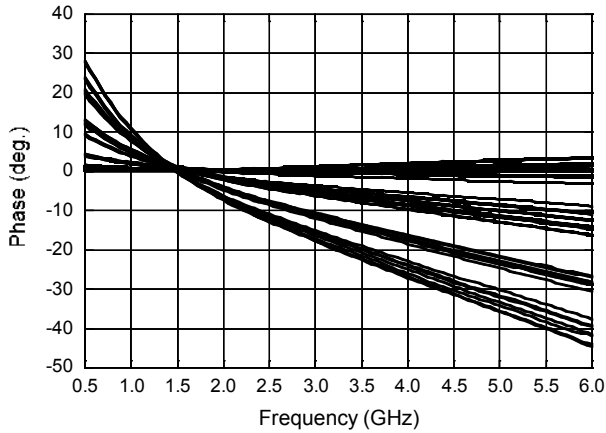


IP3



Typical Performance Curve:

Relative Phase Variation vs. Frequency and all states



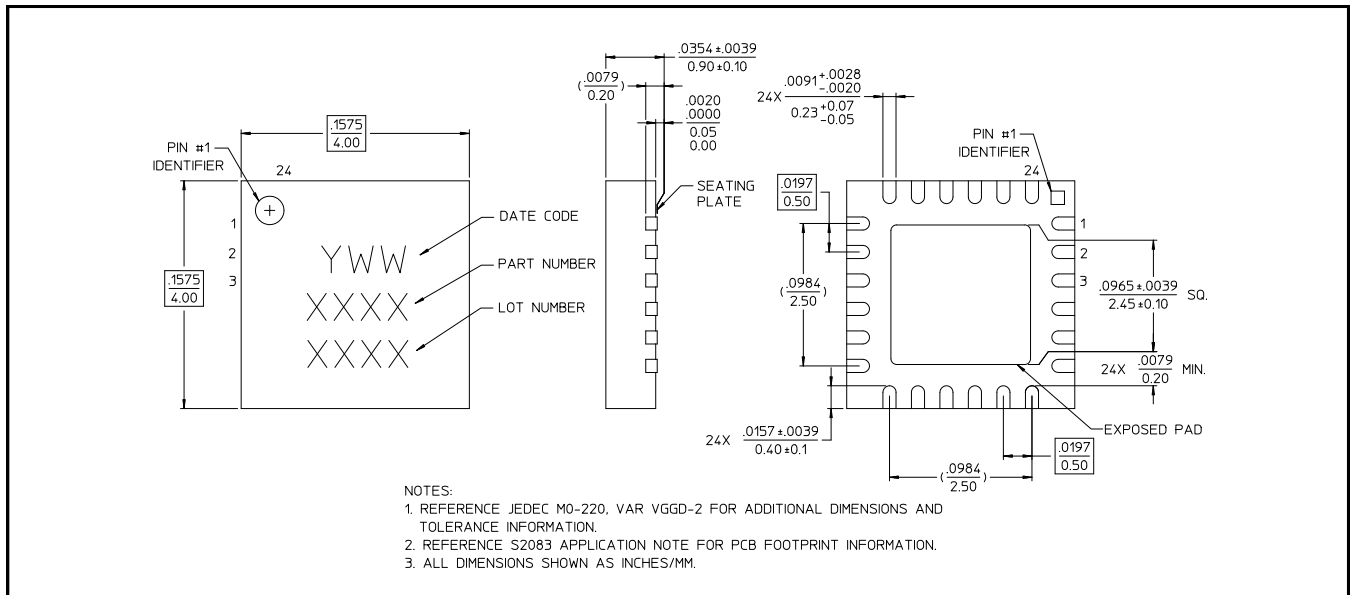
Handling Procedures

Please observe the following precautions to avoid damage:

Static Sensitivity

Gallium Arsenide Integrated Circuits are sensitive to electrostatic discharge (ESD) and can be damaged by static electricity. Proper ESD control techniques should be used when handling these devices.

Lead Free 4 mm 24-Lead PQFN[†]



[†] Reference Application Note S2083 for lead-free solder reflow recommendations.
 Meets JEDEC moisture sensitivity level 1 requirements.
 Plating is 100% matte tin over copper.

Functionality

Modes of Operation: Serial, Direct Parallel, and Latched Parallel

Mode Truth Table

| P/S | LE | Mode |
|-----|---------------|------------------|
| 1 | X | Serial |
| 0 | Constant High | Direct Parallel |
| 0 | Pulsed | Latched Parallel |

Serial Mode

The serial control interface (SERIN, CLK, LE, SEROUT) is compatible with the SPI protocol. SPI mode is activated when P/S is kept high. The 6-bit serial word must be loaded with the MSB first. After shifting in the 6 bit word, bringing LE high will set the attenuator to the desired state. While LE is high the CLK is masked to protect the data while implementing the change. SEROUT is the SERIN delayed by 6 clock cycles.

When P/S is low, the serial control interface is disabled and the serial input register is loaded asynchronously with parallel digital inputs.

For all modes of operations, the outputs will stay constant while LE is kept low.

Direct Parallel Mode

The parallel mode is enabled when P/S is set to low. In the direct parallel mode, the attenuator is controlled by the parallel control inputs directly. The LE must be at logic high to control the attenuator in this mode.

Latched Parallel Mode

In the latched parallel mode, the parallel control inputs will be buffered by registers, and loaded to the outputs when LE is high. The outputs shall not change states when LE is low.

Power-up States

The power-up (PUP) states will work in both serial and parallel modes, and initiate the attenuator according to the PUP truth table. During power up, the digital inputs shall be held constant for at least 1 μ s after V_{CC} reaches 90% of final value. For serial mode, the PUP states will only work when LE is held low. The PUP state shall be locked out after the first LE pulse.

Functionality
Modes of Operation: Serial, Direct Parallel, and Latched Parallel

PUP Truth Table

| Inputs | | | | Gain Relative to Max. Gain | Notes |
|--------|----|------|------|----------------------------------|---------------|
| PS | LE | PUP2 | PUP1 | | |
| 0 | 0 | 0 | 0 | -31.5 dB | Parallel Mode |
| 0 | 0 | 0 | 1 | -24 dB | |
| 0 | 0 | 1 | 0 | -16 dB | |
| 0 | 0 | 1 | 1 | Insertion Loss | |
| 0 | 1 | X | X | 0 to -31.5 dB (Set VC0.5 - VC16) | Serial Mode |
| 1 | 0 | X | X | 0 to -31.5 dB (Set VC0.5 - VC16) | |
| 1 | 1 | X | X | No Definition | |

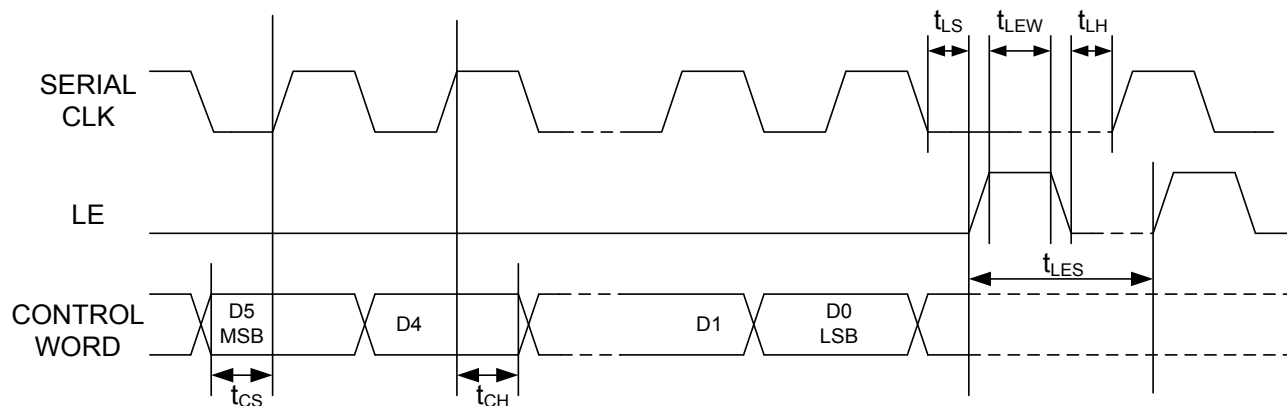
Serial Interface Timing Characteristics

| Symbol | Parameter | Typical Performance | | | Units |
|------------------|-------------------------------------|---------------------|------|-------|-------|
| | | -40°C | 25°C | +85°C | |
| t _{SCK} | Min. Serial Clock Period | 100 | 100 | 100 | ns |
| t _{CS} | Min. Control Set-up Time | 20 | 20 | 20 | ns |
| t _{CH} | Min. Control Hold Time | 20 | 20 | 20 | ns |
| t _{LS} | Min. LE Set-up Time | 10 | 10 | 10 | ns |
| t _{LEW} | Min. LE Pulse Width | 10 | 10 | 10 | ns |
| t _{LH} | Min. Serial Clock Hold Time from LE | 10 | 10 | 10 | ns |
| t _{LES} | Min. LE Pulse Spacing | 630 | 630 | 630 | ns |

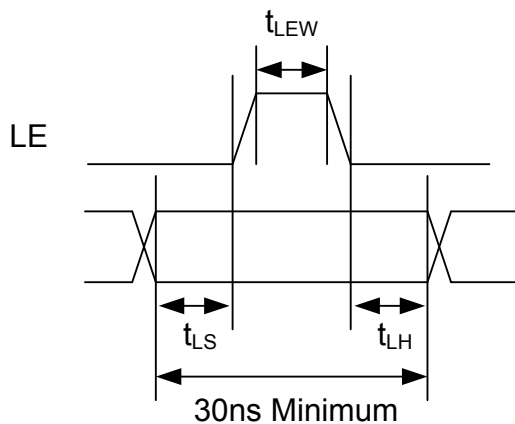
Functionality

Modes of Operation: Serial, Direct Parallel, and Latched Parallel

Serial Input Interface Timing Diagram



Parallel Control Word



M/A-COM Technology Solutions Inc. All rights reserved.

Information in this document is provided in connection with M/A-COM Technology Solutions Inc ("MACOM") products. These materials are provided by MACOM as a service to its customers and may be used for informational purposes only. Except as provided in MACOM's Terms and Conditions of Sale for such products or in any separate agreement related to this document, MACOM assumes no liability whatsoever. MACOM assumes no responsibility for errors or omissions in these materials. MACOM may make changes to specifications and product descriptions at any time, without notice. MACOM makes no commitment to update the information and shall have no responsibility whatsoever for conflicts or incompatibilities arising from future changes to its specifications and product descriptions. No license, express or implied, by estoppel or otherwise, to any intellectual property rights is granted by this document.

THESE MATERIALS ARE PROVIDED "AS IS" WITHOUT WARRANTY OF ANY KIND, EITHER EXPRESS OR IMPLIED, RELATING TO SALE AND/OR USE OF MACOM PRODUCTS INCLUDING LIABILITY OR WARRANTIES RELATING TO FITNESS FOR A PARTICULAR PURPOSE, CONSEQUENTIAL OR INCIDENTAL DAMAGES, MERCHANTABILITY, OR INFRINGEMENT OF ANY PATENT, COPYRIGHT OR OTHER INTELLECTUAL PROPERTY RIGHT. MACOM FURTHER DOES NOT WARRANT THE ACCURACY OR COMPLETENESS OF THE INFORMATION, TEXT, GRAPHICS OR OTHER ITEMS CONTAINED WITHIN THESE MATERIALS. MACOM SHALL NOT BE LIABLE FOR ANY SPECIAL, INDIRECT, INCIDENTAL, OR CONSEQUENTIAL DAMAGES, INCLUDING WITHOUT LIMITATION, LOST REVENUES OR LOST PROFITS, WHICH MAY RESULT FROM THE USE OF THESE MATERIALS.

MACOM products are not intended for use in medical, lifesaving or life sustaining applications. MACOM customers using or selling MACOM products for use in such applications do so at their own risk and agree to fully indemnify MACOM for any damages resulting from such improper use or sale.

X-ON Electronics

Largest Supplier of Electrical and Electronic Components

Click to view similar products for [Attenuators](#) category:

Click to view products by [MACOM](#) manufacturer:

Other Similar products are found below :

[HMC305SLP4ETR](#) [MAAD-009195-000100](#) [TGL4201-00](#) [TGL4201-02](#) [TGL4201-03](#) [TGL4201-06](#) [TGL4201-10](#) [ATN3590-15](#) [20-50TPC](#)
[D10AA5Z4](#) [18AH-01](#) [18AH-08](#) [ATN3590-09](#) [20-50RP](#) [PCAF-10](#) [EXB-24AT9AR5X](#) [ATN3580-06](#) [ATN3580-10](#) [HMC539ALP3ETR](#)
[ATN3580-02](#) [WA04P006XCTL](#) [SKY12408-321LF](#) [ATN3580-03](#) [WA04P005XBTL](#) [HMC-VVD104-SX](#) [WA04P007XCTL](#) [SKY12236-11](#)
[MAATSS0018TR-3000](#) [HMC656-SX](#) [WA04P001XBTL](#) [WA04P004XBTL](#) [WA04P002XBTL](#) [C3A50Z4](#) [HMC941A](#) [PAT0816-C-0DB-T5](#)
[PAT0816-C-8DB-T5](#) [PAT1632-C-3DB-T1](#) [PAT1632-C-6DB-T1](#) [PAT1632-C-10DB-T1](#) [PAT1632-C-1DB-T1](#) [PAT0816-C-2DB-T5](#)
[PAT0816-C-4DB-T5](#) [DHM510-0100-006](#) [CMD172](#) [MAT10300](#) [MAT10180](#) [MAATCC0007-TB](#) [MAATCC0011](#) [HMC470ALP3E](#)
[HMC655-SX](#)