

### Features

- Single Stage, Differential Amplifier
- 5 V, 290 mA Operation
- 17 dB Flat Gain
- Low Noise
- Low Distortion Performance
- ESD Class 1B for HBM
- Lead-Free SOIC-8EP Plastic Package
- Halogen-Free “Green” Mold Compound
- RoHS\* Compliant

### Description

The MAAM-011240 is high gain, high linearity and low noise differential RF amplifier assembled in a SOIC-8EP plastic package. This amplifier provides 17 dB of flat gain with very low noise figure. The differential push-pull topology provides superior 2nd order intermodulation performance.

The MAAM-011240 provides high gain, low noise and low distortion making it ideally suited for 75  $\Omega$  infrastructure applications.

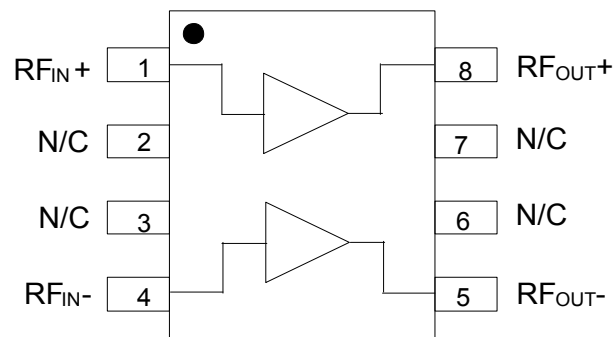
The MAAM-011240 is fabricated using GaAs pHEMT technology.

### Ordering Information<sup>1,2</sup>

Part Number	Package
MAAM-011240	Bulk Packaging
MAAM-011240-TR1000	1000 Part Reel
MAAM-011240-TR3000	3000 Part Reel
MAAM-011240-001SMB	Sample Board, 45 - 1218 MHz
MAAM-011240-002SMB	Sample Board, 5 - 300 MHz

1. Reference Application Note M513 for reel size information.
2. All sample boards include 5 loose parts.

### Functional Schematic



### Pin Configuration

Pin No.	Pin Name	Function
1	RF <sub>IN+</sub>	RF Input +
2	N/C	No Connection
3	N/C	No Connection
4	RF <sub>IN-</sub>	RF Input -
5	RF <sub>OUT-</sub>	RF Output - / V <sub>DD</sub>
6	N/C	No Connection
7	N/C	No Connection
8	RF <sub>OUT+</sub>	RF Output + / V <sub>DD</sub>
9	Pad <sup>3</sup>	RF and DC Ground

3. The exposed pad centered on package bottom must be connected to RF and DC ground.

\* Restrictions on Hazardous Substances, European Union Directive 2011/65/EU.

## 75 $\Omega$ , Differential RF Amplifier 5 - 1218 MHz

Rev. V1

### Electrical Specifications: $T_A = 25^\circ\text{C}$ , $V_{DD} = 5\text{ V}$ , $Z_0 = 75\ \Omega$

Performance specified with input/output balun MABA-009210-CT1760

Parameter	Test Conditions	Units	Min.	Typ.	Max.
Gain	1218 MHz	dB	16.2	17	18.5
Tilt	45 - 1218 MHz	dB	—	0	—
Reverse Isolation	45 - 1218 MHz	dB	—	21	—
Input Return Loss	45 - 1218 MHz	dB	—	20	—
Output Return Loss	45 - 1218 MHz	dB	—	20	—
Noise Figure	45 MHz 1218 MHz	dB	—	1.7 2.6	—
Output IP2	45 - 1218 MHz, tone spacing 6 MHz $P_{OUT}$ per tone = +13 dBm	dBm	—	63	—
Output IP3	45 - 1218 MHz, tone spacing 6 MHz $P_{OUT}$ per tone = +13 dBm	dBm	—	44	—
P1dB	45 - 1218 MHz	dBm	—	25	—
Composite Triple Beat, CTB	79 channels, 0 dB Tilt, 39 dBmV per channel output, QAM to 1000 MHz	dBc	—	-75	—
Composite Second Order, CSO	79 channels, 0 dB Tilt, 39 dBmV per channel output, QAM to 1000 MHz	dBc	—	-77	—
ACPR <sup>4</sup>	62 dBmV output, Single Channel: 79 MHz 1218 MHz	dBc	—	-70 -64	—
$I_{DD}$	$V_{DD} = 5\text{ V}$	mA	—	290	350

4. Adjacent Channel (750 kHz from channel block edge to 6 MHz from channel block edge), 256 QAM, 5.36 Msym/sec.

### Absolute Maximum Ratings<sup>5,6,7</sup>

Parameter	Absolute Maximum
Max Input Power	10 dBm
Operating Voltage	8 V
Operating Temperature	-40°C to +85°C
Storage Temperature	-65°C to +150°C
Junction Temperature <sup>8</sup>	+150°C

5. Exceeding any one or combination of these limits may cause permanent damage to this device.
6. MACOM does not recommend sustained operation near these survivability limits.
7. Operating at nominal conditions with  $T_J < 150^\circ\text{C}$  will ensure  $MTTF > 1 \times 10^6$  hours.
8. Junction Temperature ( $T_J$ ) = Case Temperature ( $T_C$ ) +  $\Theta_{JC} \cdot (V \cdot I)$   
Typical thermal resistance ( $\Theta_{JC}$ ) = 29°C/W.
  - a) For  $T_C = 25^\circ\text{C}$ ,  
 $T_J = 67^\circ\text{C}$  @ 5 V, 290 mA
  - b) For  $T_C = 85^\circ\text{C}$ ,  
 $T_J = 127^\circ\text{C}$  @ 5 V, 290 mA

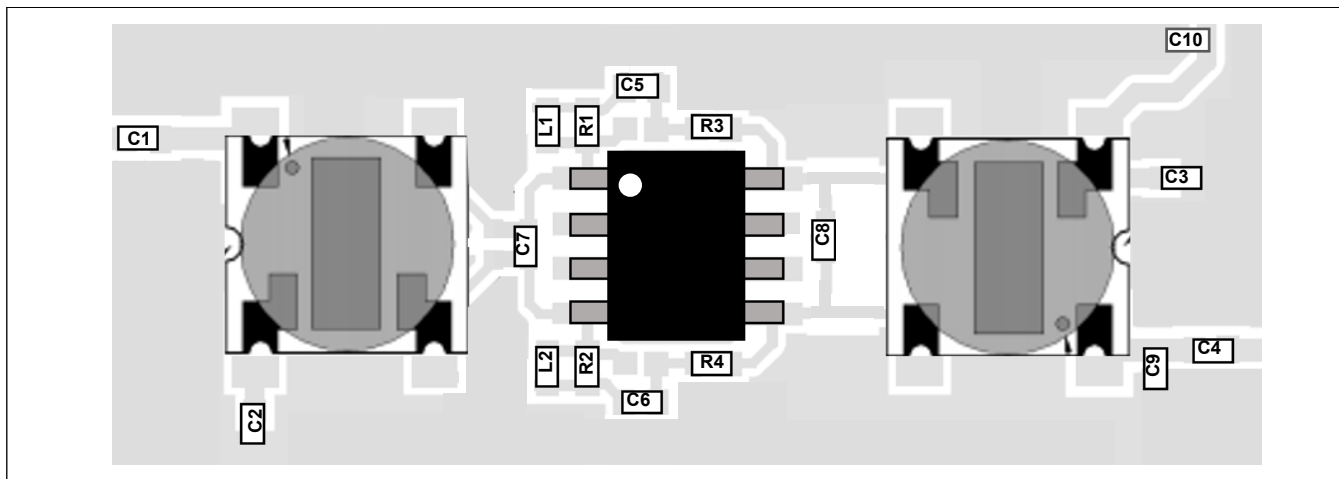
### Handling Procedures

Please observe the following precautions to avoid damage:

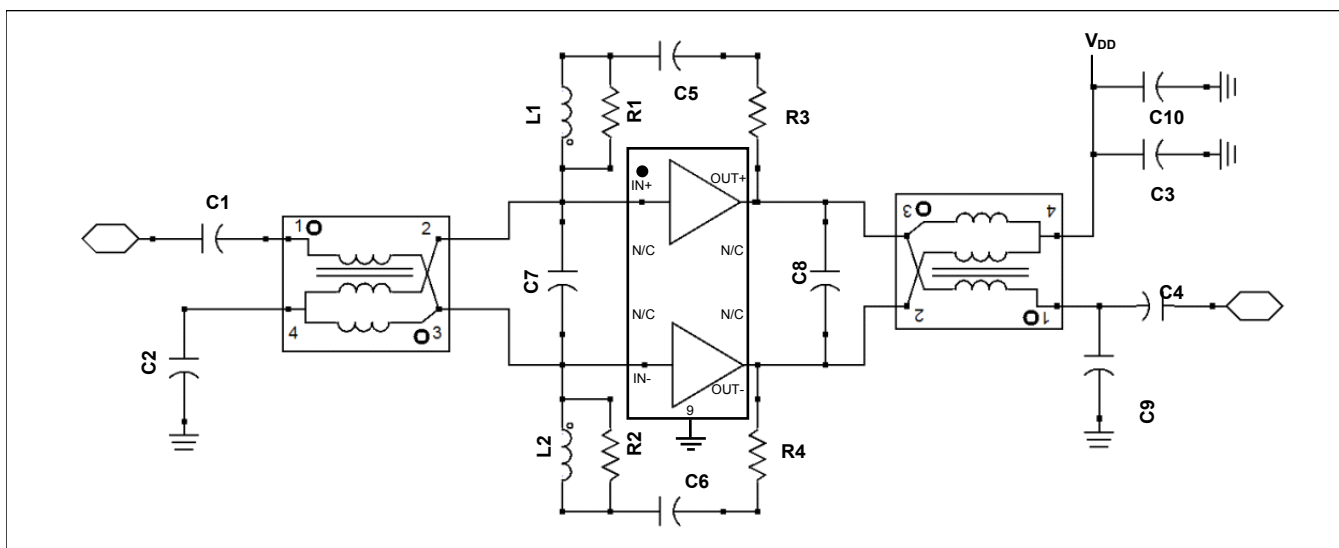
### Static Sensitivity

Integrated Circuits are sensitive to electrostatic discharge (ESD) and can be damaged by static electricity. Proper ESD control techniques should be used when handling these (HBM) Class 1B devices.

## Recommended PCB Layout



## Schematic Including Off-Chip Components



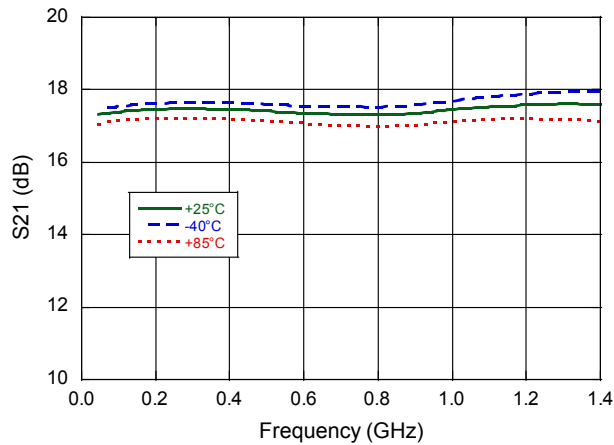
## Parts List

Component	Value	Package	Component	Value	Package
C1, C4	270 pF	0402	L1, L2	33 nH	0402
C2, C3, C5, C6, C10	10 nF	0402	R1, R2	62 $\Omega$	0402
C7	0.5 pF	0402	R3, R4	316 $\Omega$	0402
C8	1.0 pF	0402	T1, T2	1:1 Balun <sup>9</sup>	—
C9	Do Not Install	0402			

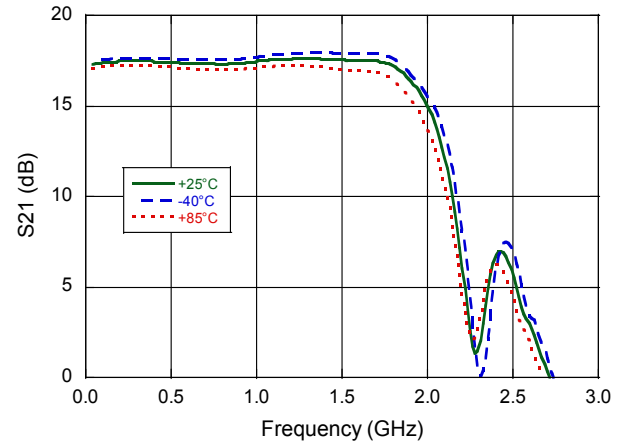
9. MABA-009210-CT1760

**Typical Performance Curves:  $V_{DD} = 5\text{ V}$**

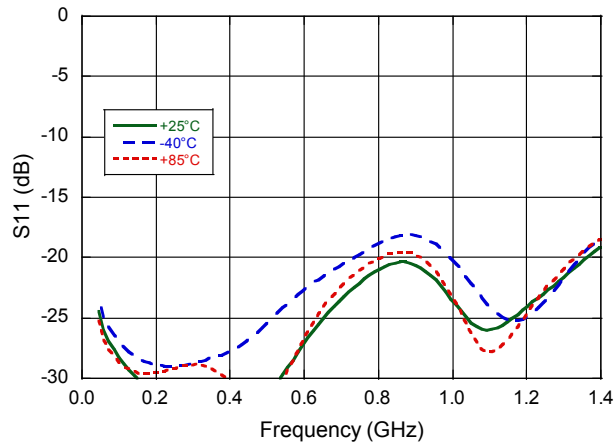
**Gain**



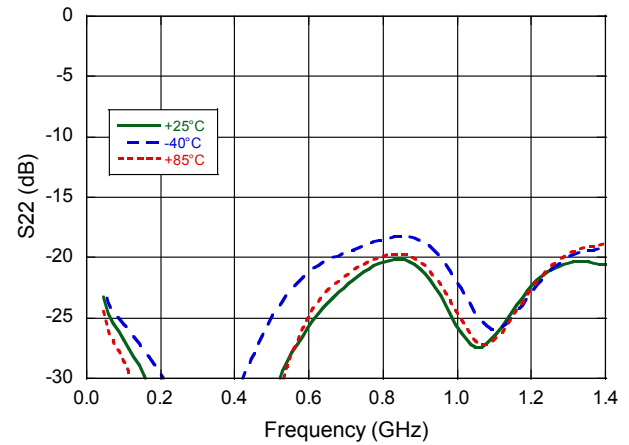
**Gain to 3 GHz**



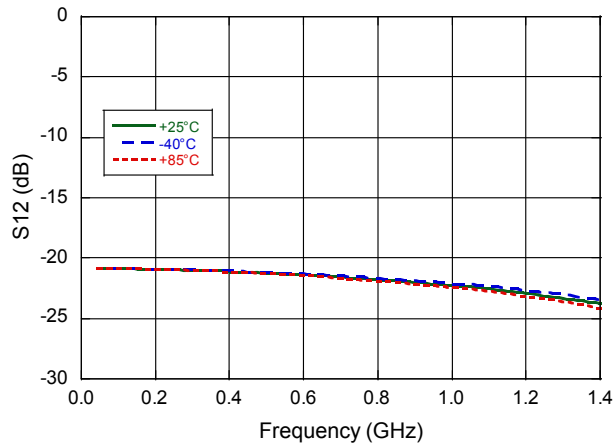
**Input Return Loss**



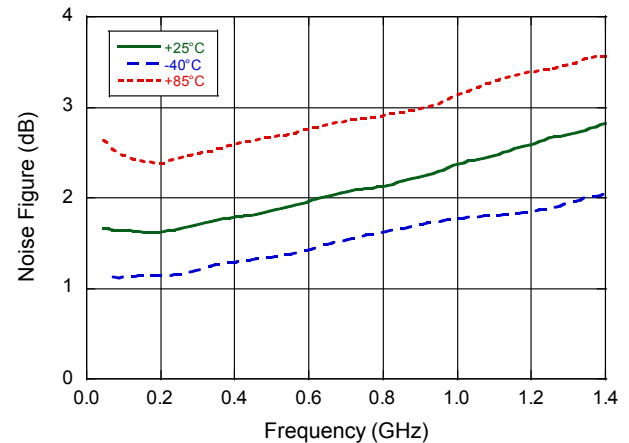
**Output Return Loss**



**Reverse Isolation**

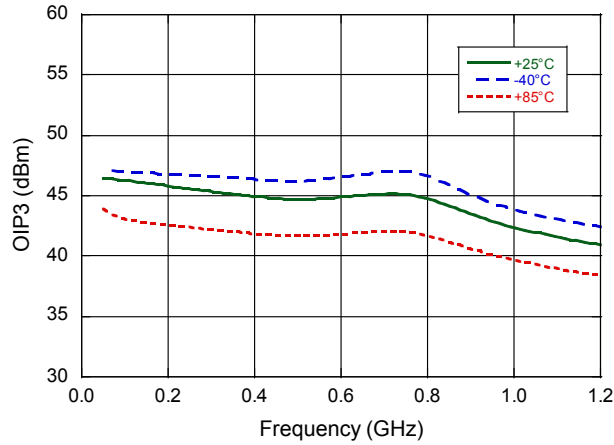


**Noise Figure**

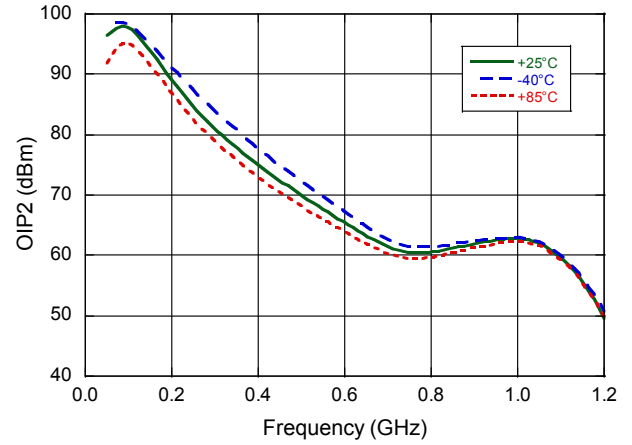


**Typical Performance Curves:  $V_{DD} = 5\text{ V}$**

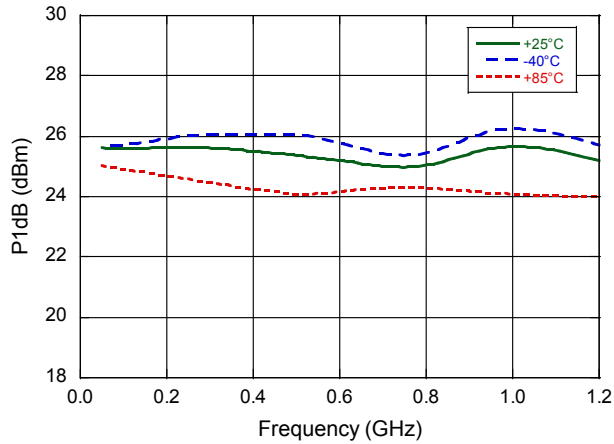
**$OIP3, P_{OUT} = +13\text{ dBm/tone}$**



**$OIP2, P_{OUT} = +13\text{ dBm/tone}$**

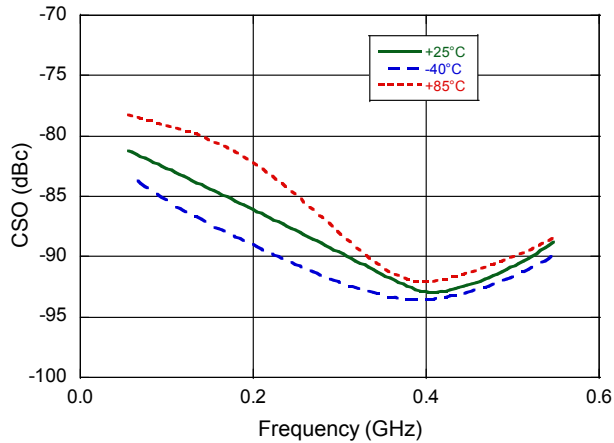


**$P1dB$**

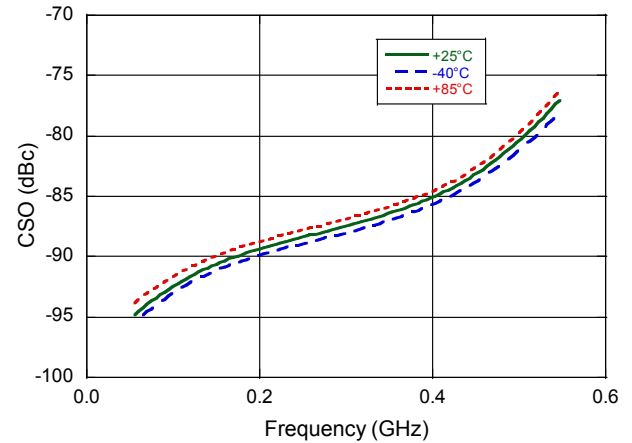


**Typical Performance Curves:  $V_{DD} = 5\text{ V}$**

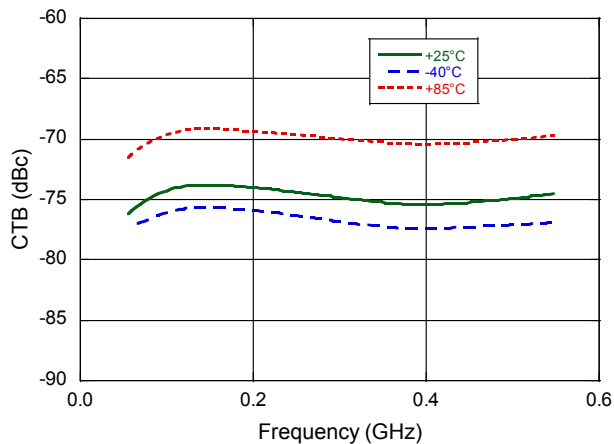
**CSO Lower, 79 channels + QAM to 1 GHz,**  
**0 dB tilt, 39 dBmV per channel**



**CSO Upper, 79 channels + QAM to 1 GHz,**  
**0 dB tilt, 39 dBmV per channel**

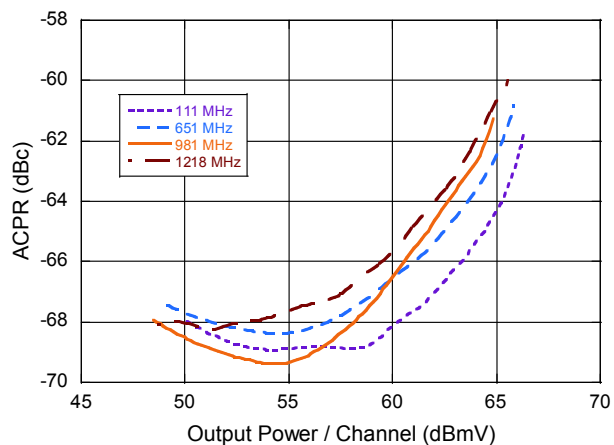


**CTB, 79 channels + QAM to 1 GHz,**  
**0 dB tilt, 39 dBmV per channel**

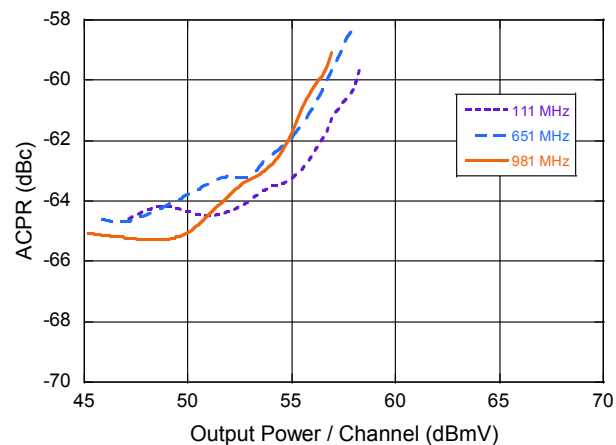


**Typical Performance Curves:  $V_{DD} = 5\text{ V}$ , Temp =  $+25^\circ\text{C}$**

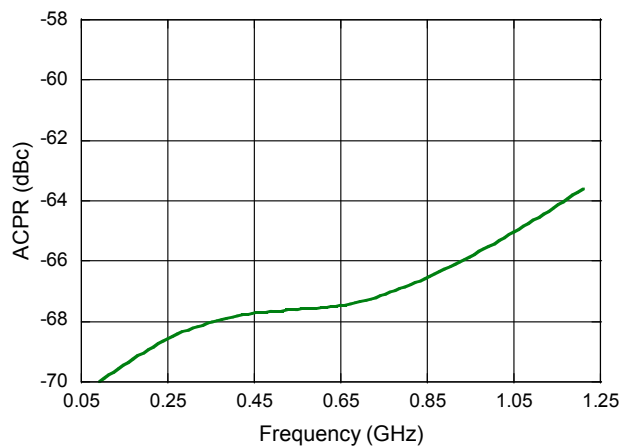
**ACPR vs.  $P_{OUT}$ , Single Channel**



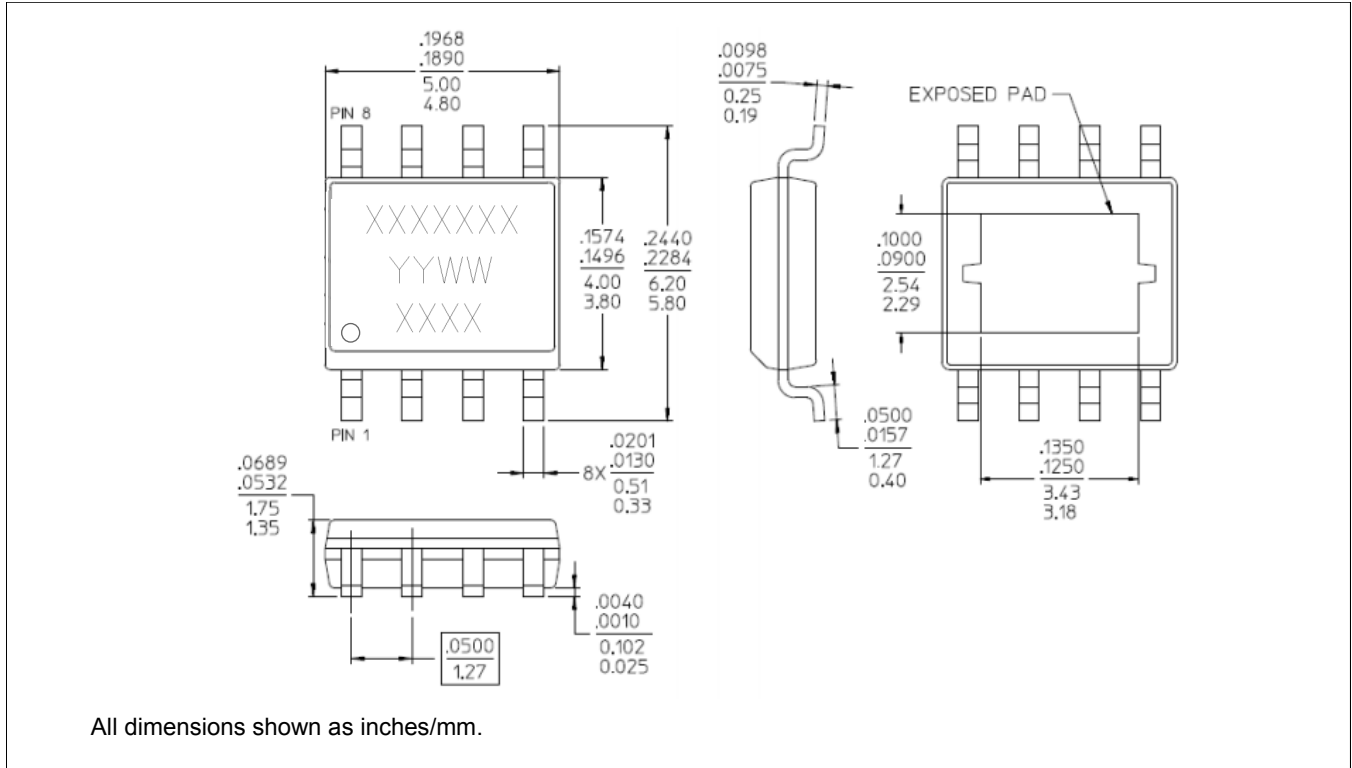
**ACPR vs.  $P_{OUT}$ , 4 Channels**



**ACPR vs. Frequency,  $P_{OUT} = +62\text{ dBmV}$ , Single Channel**

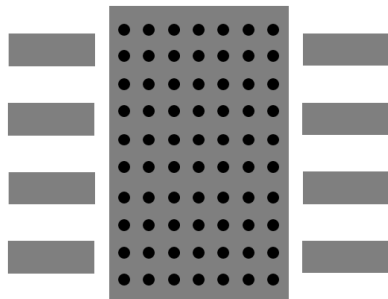


## SOIC-8EP<sup>†</sup>



<sup>†</sup> Reference Application Note S2083 for lead-free solder reflow recommendations.  
Meets JEDEC moisture sensitivity level 1 requirements.  
Plating is 100% matte tin over copper.

## Recommended PCB Land Pattern



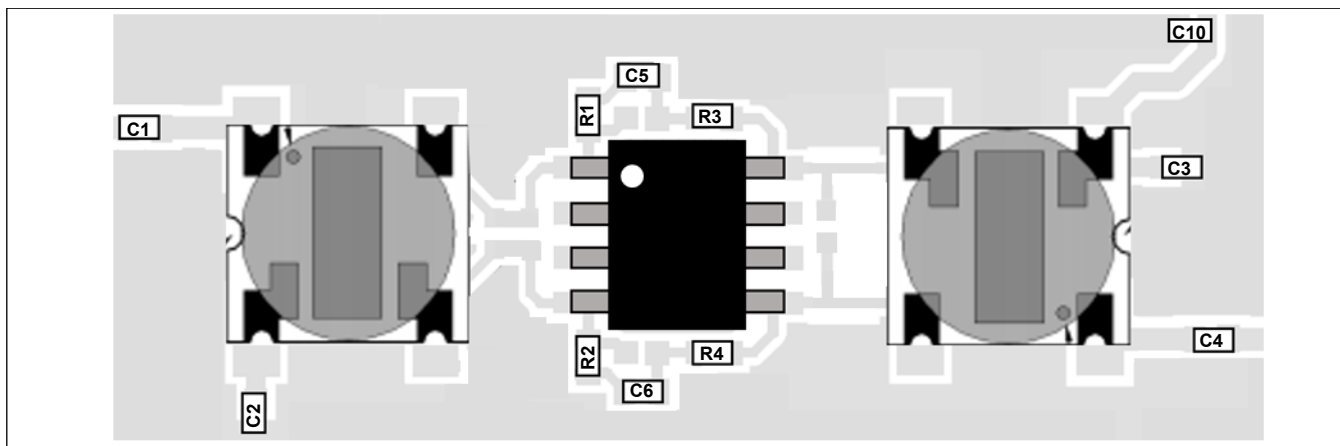
70 ground vias  
0.008 inch finished hole diameter



## Applications Section: 5 - 300 MHz Application

The MAAM-011240 may be tuned for operation in the 5 - 300 MHz band for CATV reverse path (upstream) applications using an alternate balun and other external tuning components as identified in the table below. The recommended PCB layout and schematic are the same as identified on page 4.

### Recommended PCB Layout for Upstream



### Parts List : 5 - 300 MHz Tune

Component	Value	Package	Component	Value	Package
C1, C2, C4 - C6	10 nF	0402	C3	0.1 $\mu$ F	0402
C10	2200 pF	0402	R1, R2	150 $\Omega$	0402
T1, T2	1:1 Balun <sup>10</sup>	—	R3, R4	180 $\Omega$	0402

10. MABA-011085

### Electrical Specifications: 5 - 300 MHz Tune, $T_A = 25^\circ\text{C}$ , $V_{DD} = 5\text{ V}$ , $Z_0 = 75\ \Omega$

Parameter	Test Conditions	Units	Min.	Typ.	Max.
Gain	5 - 300 MHz	dB	—	17	—
Reverse Isolation	5 - 300 MHz	dB	—	21	—
Input Return Loss	5 - 300 MHz	dB	—	23	—
Output Return Loss	5 - 300 MHz	dB	—	21	—
Noise Figure	5 - 10 MHz 20 - 300 MHz	dB	—	2.3 2.0	—
Output IP2	5 - 300 MHz, tone spacing 6 MHz $P_{OUT}$ per tone = +13 dBm	dBm	—	75	—
Output IP3	5 - 300 MHz, tone spacing 6 MHz $P_{OUT}$ per tone = +13 dBm	dBm	—	45	—
P1dB	5 - 300 MHz	dBm	—	25	—
$I_{DD}$	$V_{DD} = 5\text{ V}$	mA	—	290	—
Noise Power Ratio	5 - 85 MHz, 41 MHz Notch, Peak NPR 5 - 204 MHz, 100 MHz Notch, Peak NPR	dB	—	72 71	—

9

MACOM Technology Solutions Inc. (MACOM) and its affiliates reserve the right to make changes to the product(s) or information contained herein without notice. Visit [www.macom.com](http://www.macom.com) for additional data sheets and product information.

For further information and support please visit:  
<https://www.macom.com/support>

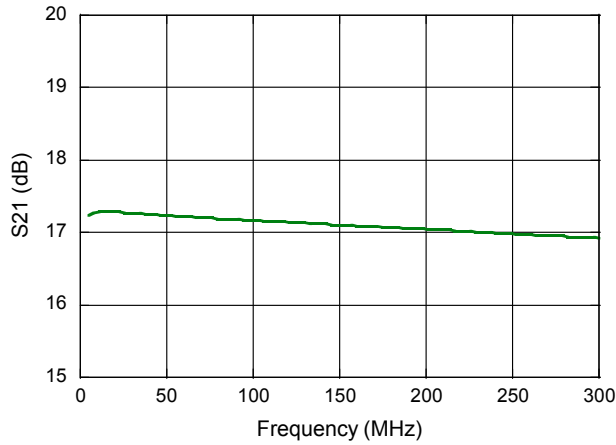
DC-0011769

## 75 $\Omega$ , Differential RF Amplifier 5 - 1218 MHz

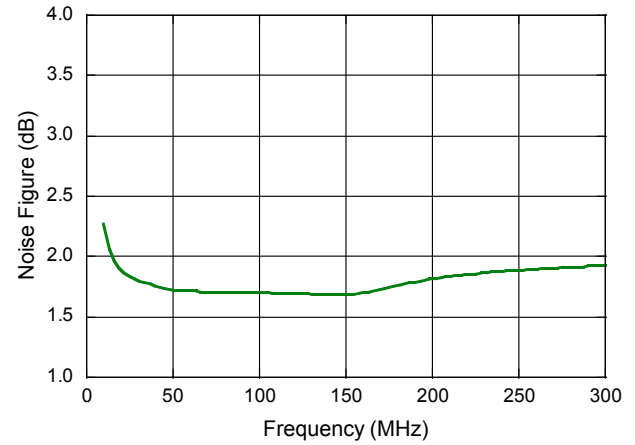
Rev. V1

### Typical Performance Curves: 5 - 300 MHz Tune, $V_{DD} = 5\text{ V}$ , $+25^\circ\text{C}$

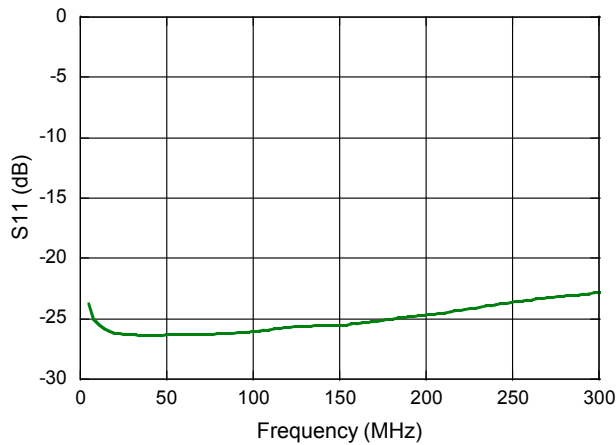
**Gain**



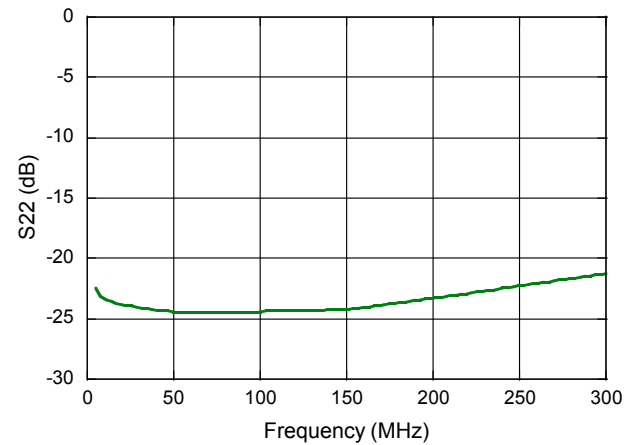
**Noise Figure**



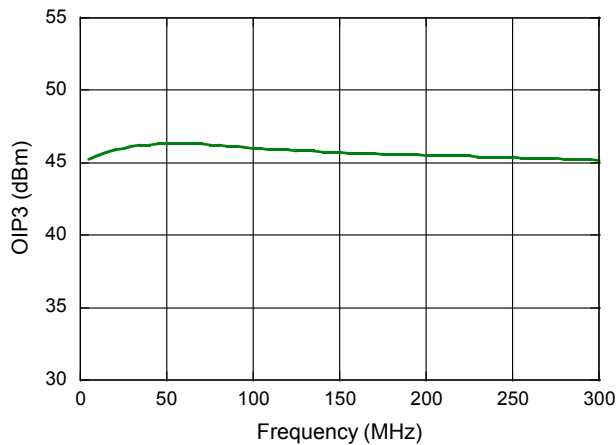
**Input Return Loss**



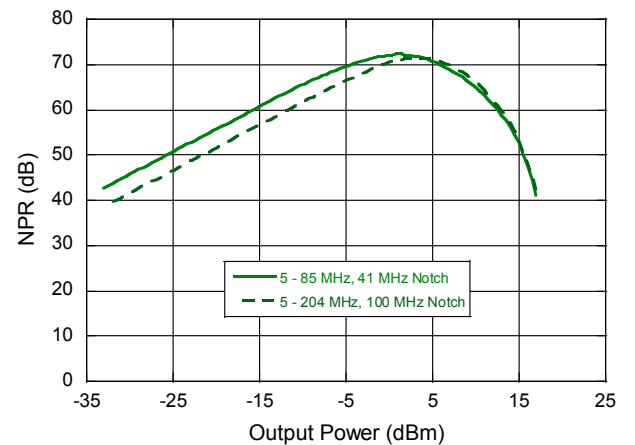
**Output Return Loss**



**OIP3**



**NPR**



MACOM Technology Solutions Inc. All rights reserved.

Information in this document is provided in connection with MACOM Technology Solutions Inc ("MACOM") products. These materials are provided by MACOM as a service to its customers and may be used for informational purposes only. Except as provided in MACOM's Terms and Conditions of Sale for such products or in any separate agreement related to this document, MACOM assumes no liability whatsoever. MACOM assumes no responsibility for errors or omissions in these materials. MACOM may make changes to specifications and product descriptions at any time, without notice. MACOM makes no commitment to update the information and shall have no responsibility whatsoever for conflicts or incompatibilities arising from future changes to its specifications and product descriptions. No license, express or implied, by estoppel or otherwise, to any intellectual property rights is granted by this document.

THESE MATERIALS ARE PROVIDED "AS IS" WITHOUT WARRANTY OF ANY KIND, EITHER EXPRESS OR IMPLIED, RELATING TO SALE AND/OR USE OF MACOM PRODUCTS INCLUDING LIABILITY OR WARRANTIES RELATING TO FITNESS FOR A PARTICULAR PURPOSE, CONSEQUENTIAL OR INCIDENTAL DAMAGES, MERCHANTABILITY, OR INFRINGEMENT OF ANY PATENT, COPYRIGHT OR OTHER INTELLECTUAL PROPERTY RIGHT. MACOM FURTHER DOES NOT WARRANT THE ACCURACY OR COMPLETENESS OF THE INFORMATION, TEXT, GRAPHICS OR OTHER ITEMS CONTAINED WITHIN THESE MATERIALS. MACOM SHALL NOT BE LIABLE FOR ANY SPECIAL, INDIRECT, INCIDENTAL, OR CONSEQUENTIAL DAMAGES, INCLUDING WITHOUT LIMITATION, LOST REVENUES OR LOST PROFITS, WHICH MAY RESULT FROM THE USE OF THESE MATERIALS.

MACOM products are not intended for use in medical, lifesaving or life sustaining applications. MACOM customers using or selling MACOM products for use in such applications do so at their own risk and agree to fully indemnify MACOM for any damages resulting from such improper use or sale.

## X-ON Electronics

Largest Supplier of Electrical and Electronic Components

*Click to view similar products for [RF Amplifier](#) category:*

*Click to view products by [MACOM](#) manufacturer:*

Other Similar products are found below :

[A82-1](#) [BGA622H6820XTSA1](#) [BGA 728L7 E6327](#) [BGB719N7ESDE6327XTMA1](#) [HMC397-SX](#) [HMC405](#) [HMC561-SX](#) [HMC8120-SX](#)  
[HMC8121-SX](#) [HMC-ALH382-SX](#) [HMC-ALH476-SX](#) [SE2433T-R](#) [SMA3101-TL-E](#) [SMA39](#) [A66-1](#) [A66-3](#) [A67-1](#) [LX5535LQ](#) [LX5540LL](#)  
[MAAM02350](#) [HMC3653LP3BETR](#) [HMC549MS8GETR](#) [HMC-ALH435-SX](#) [SMA101](#) [SMA32](#) [SMA411](#) [SMA531](#) [SST12LP17E-XX8E](#)  
[SST12LP19E-QX6E](#) [WPM0510A](#) [HMC5929LS6TR](#) [HMC5879LS7TR](#) [HMC1126](#) [HMC1087F10](#) [HMC1086](#) [HMC1016](#) [SMA1212](#)  
[MAX2689EWS+T](#) [MAAMSS0041TR](#) [MAAM37000-A1G](#) [LTC6430AIUF-15#PBF](#) [CHA5115-QDG](#) [SMA70-2](#) [SMA4011](#) [A231](#) [HMC-](#)  
[AUH232](#) [LX5511LQ](#) [LX5511LQ-TR](#) [HMC7441-SX](#) [HMC-ALH310](#)