

RoHS Compliant

E-Series 2-Way 0° Power Divider 5 – 900 MHz

MAPD-008072-ESSM26
V2P

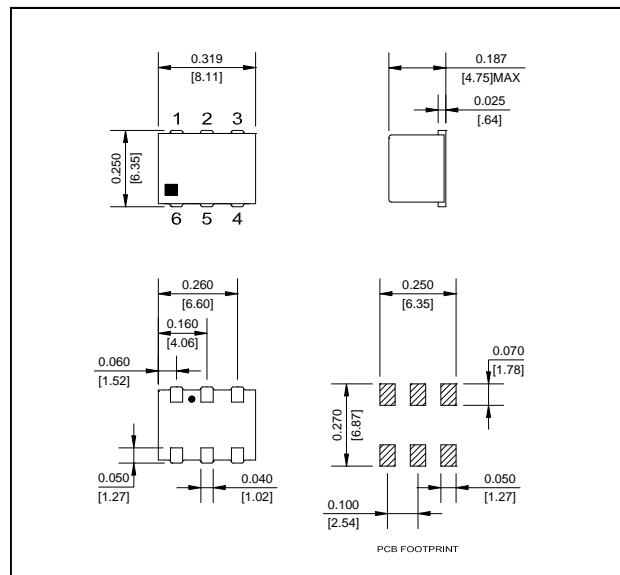
Features

- Surface mount
- Wide frequency range
- 2-Way—0°
- RoHS* Compliant and is 260°C reflow compatible.
- Available on Tape and Reel, reel quantity 900

Description

M/A-COM's MAPD-008072-ESSM26 is a RoHS compliant 2 Way 0° Power Divider in a low cost, surface mount package. Ideally suited for high volume cellular and wireless applications. Parts are packaged in tape & reel.

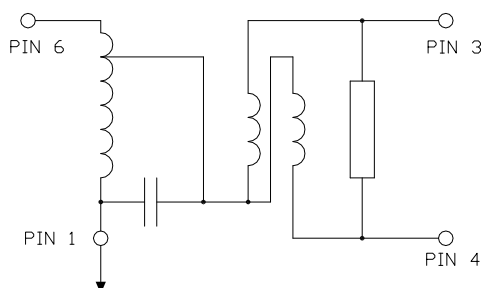
SM-1 Package



Pin Configuration

Pin No.	Function
1	Ground
2	Not Connected
3	Port 2
4	Port 1
5	Not Connected
6	Input

Schematic



This PRELIMINARY Data Sheet contains information regarding a product M/A-COM has under development. Performance is based on measured results and target specifications. Commitment to produce in volume is not guaranteed.

* Restrictions on Hazardous Substances, European Union Directive 2002/95/EC.

Ordering Information

Part Number	Package
MAPD-008072-ESSM26	900 piece reel

Note: Reference Application Note M513 for reel size information.

Absolute Maximum Ratings ^{1,2}

Parameter	Absolute Maximum
Maximum Power Rating	1 Watt
Internal Load Dissipation	0.125 Watt
Pin Temperature (10 Sec)	250°C
Operating Temperature	-40°C to +85°C
Storage Temperature	-55°C to +125°C

1. Exceeding any one or combination of these limits may cause permanent damage to this device.
2. M/A-COM does not recommend sustained operation near these survivability limits.

E-Series 2-Way 0° Power Divider
5 – 900 MHz

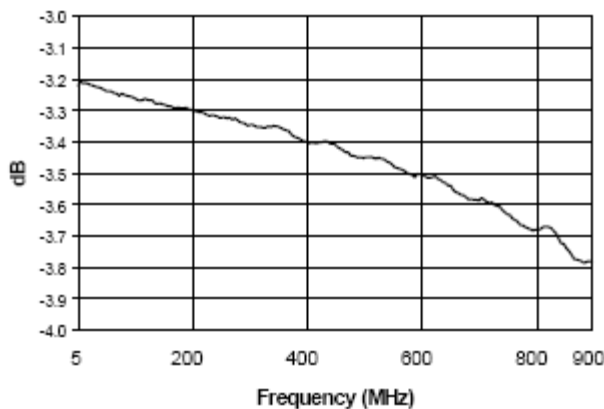
MAPD-008072-ESSM26
V2P

Electrical Specifications: $T_A = 25^\circ\text{C}$, $Z_0 = 50\Omega$ ¹

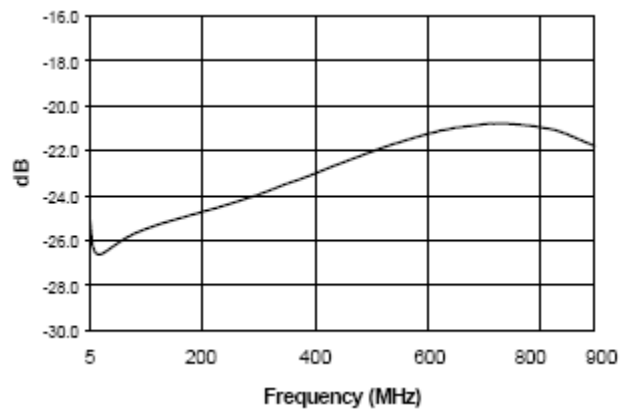
Parameter	Test Conditions	Frequency	Units	Min	Typ	Max
RF Frequency	—	5 - 900	MHz	—	—	—
Insertion Loss	F_L-f_U	5 - 50	dB	—	0.2	0.4
		50 - 450	dB	—	0.4	0.7
		450 - 900	dB	—	0.7	1.2
Isolation	F_L-f_U	5 - 50	dB	20	28	—
		50 - 450	dB	20	28	—
		450 - 900	dB	15	22	—
Amplitude Unbalance	F_L-f_U	5 - 50	dB	—	—	0.2
		50 - 450	dB	—	—	0.3
		450 - 900	dB	—	—	0.5
Phase Unbalance	F_L-f_U	5 - 50	Degrees	—	—	2
		50 - 450	Degrees	—	—	3
		450 - 900	Degrees	—	—	5
Input & Output Return Loss	F_L-f_U	5 - 900	dB	16.0	25.0	—

Typical Performance @ +25° C

Insertion Loss



Isolation



RoHS Compliant

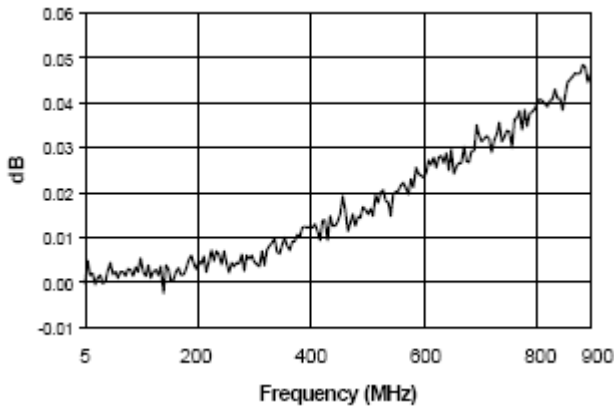


E-Series 2-Way 0° Power Divider
5 – 900 MHz

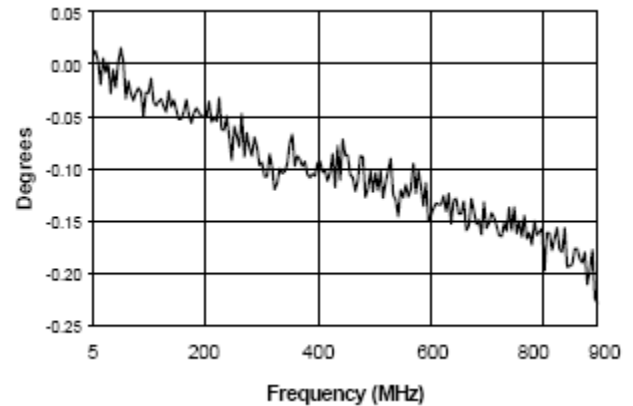
MAPD-008072-ESSM26
V2P

Typical Performance @ +25° C

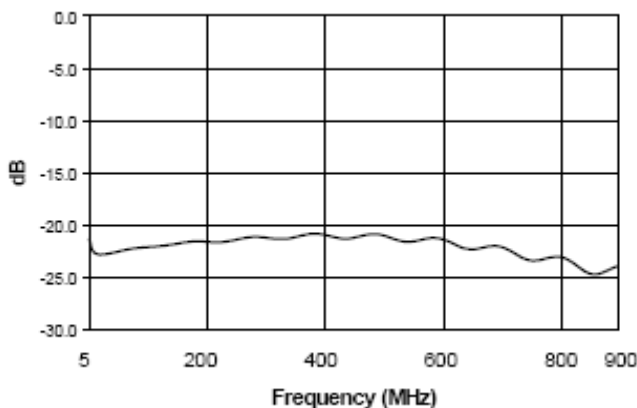
Amplitude Unbalance



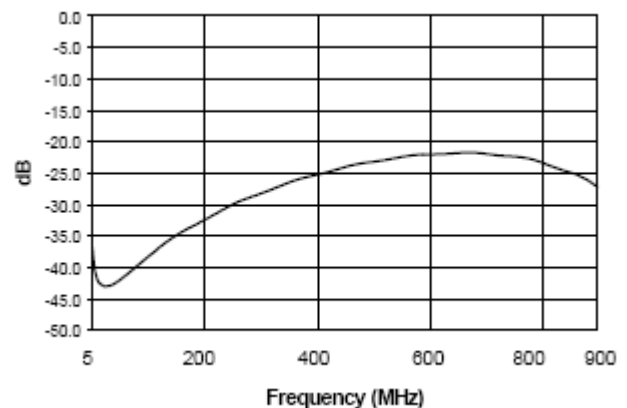
Phase Unbalance



Output Return Loss



Input Return Loss



X-ON Electronics

Largest Supplier of Electrical and Electronic Components

Click to view similar products for [Signal Conditioning](#) category:

Click to view products by [MACOM](#) manufacturer:

Other Similar products are found below :

[MAPDCC0001](#) [MAPDCC0004](#) [PD0409J5050S2HF](#) [880157](#) [HHS-109-PIN](#) [DC1417J5005AHF](#) [AFS14A30-2185.00-T3](#) [AFS14A35-1591.50-T3](#) [DS-323-PIN](#) [B39321R801H210](#) [1A0220-3](#) [JP510S](#) [LFB212G45SG8C341](#) [LFB322G45SN1A504](#) [LFL182G45TC3B746](#) [SF2159E](#) [30057](#)
[FM-104-PIN](#) [CER0813B](#) [MAPDCC0005](#) [3A325](#) [40287](#) [41180](#) [ATB3225-75032NCT](#) [BD0810N50100AHF](#) [BD2425J50200AHF](#)
[C5060J5003AHF](#) [JHS-115-PIN](#) [JP503AS](#) [DC0710J5005AHF](#) [DC2327J5005AHF](#) [DC3338J5005AHF](#) [43020](#) [LFB2H2G60BB1C106](#)
[LFL15869MTC1B787](#) [X3C19F1-20S](#) [XC3500P-20S](#) [10013-20](#) [SF2194E](#) [CDBLB455KCAX39-B0](#) [TGL2208-SM, EVAL](#) [RF1353C](#)
[PD0922J5050D2HF](#) [1E1305-3](#) [1G1304-30](#) [B0922J7575AHF](#) [2020-6622-20](#) [TP-102-PIN](#) [TP-103-PIN](#) [BD1222J50200AHF](#)