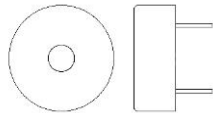


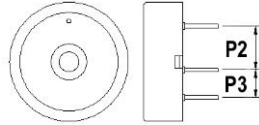
Product APPLICATION Guide



Piezoelectric- PC Pins

Piezoelectric Transducers- External Drive

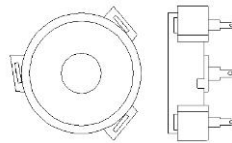
Part Number	Sound Level @ 10cm 5Vpp Sq. Wave	Freq. (Hz)	Operating Voltage (Vpp)	Current @ 5Vpp (mA)	Dia x Hgt (mm)	PC Pin Pitch (mm c/c)	Comments
Piezoelectric Transducer- External Drive (No Feedback)							
PT-4176PQ	75	750	1 - 30	1.5	50 x 13	43	Offset Term
PT-2030P-PQ	80	2000	1 - 25	1.5	26 x 16	23	Offset Term
PT-1140PEQ	85 @ 9Vpp	4000	1 - 20	7 @ 9Vpp	12 x 5.5	6.5	
PT-1240PEQ	80	4000	1 - 30	2	13.5 x 6.7	7.5	Sealed
PT-1240PQ	80	4100	1 - 20	2	13.8 x 8.3	7.6	
PT-1240PFQ	80 @ 3Vpp	4000	1 - 30	1.5 @ 3Vpp	12.5 x 6	5	
PT-1245P-PQ	80	4000	1 - 25	1.5	12.6 x 6.0	7.6	
PT-1540PQ	80	4000	1 - 25	1.5	17 x 9	10	
PT-2020PQ	80	2000	1 - 30	1.5	22x7.2x26.6	12.5	Edge Mount
PT-2060PQ	80	6000	1 - 30	1.5	24 x 5.5	10	
PT-3110PQ	85	1100	1 - 30	2	34 x 9.3	25.4	
PT-4175PQ	87	750	1 - 30	1.4	44 x 14	25.4	
PT-2040PQ	90	4000	1 - 30	1.5	22 x 9	10	
PT-2130PQ	90	3000	1 - 30	5	24 x 9.5	15	
PT-2726PQ	90	2500	1 - 30	1.5	30 x 10	15	
PT-2736PQ	90	3500	1 - 30	5	30 x 10	18	
PT-4532PLQ	103	3200	3 - 50	30	54 x 18.8	46.5	Blade Terms



Piezoelectric- PC Pins

Piezoelectric Transducers- Self Drive

Part Number	Sound Level @ 12 Vdc @ 10 cm	Freq. (Hz)	Operating Voltage (Vpp)	Current @ 12Vdc (mA)	Dia x Hgt (mm)	P2 (mm)	P3 (mm)	Comments
Piezoelectric Transducer- Self Drive (with Feedback)								
PT-1240FEQ	85 @ 9Vpp	4100	1 - 20	7 @ 9Vpp	13.8 x 7.5	5	2.6	
PT-2130FPQ	80	3000	1.5 - 30	12	24 x 9.5	8.5	4	
PT-2726FPQ	90	2600	3 - 28	8	30 x 10	11	7	
PT-2736FPQ	90	3500	3 - 28	8	30 x 10	11	7	
PT-2742FPQ	90	4200	3 - 28	8	30 x 10	11	7	
PT-3529FPQ	90	2900	3 - 28	8	42 x 16	10.5	8	
PT-3534FPQ	105	3400	3 - 28	12	39 x 20	10.5	8	Blade Terms



Piezoelectric PC Pins

Piezoelectric Transducers- Self Drive

Part Number	Sound Level @ 12 Vdc @ 10 cm	Freq. (Hz)	Operating Voltage (Vpp)	Current @ 12Vdc (mA)	Dia x Hgt (mm)	Comments
Piezoelectric Transducer- Self Drive (with Feedback)						
PT-2725FPQ	85	2500	3 - 28	10	30 x 10	3 mm Standoff
PT-2725FPLQ	85	2500	3 - 28	10	30 x 10	6 mm Standoff
PT-2728FPQ	85	2800	3 - 28	10	30.5x8x33	Edge Mount
PT-2035FPQ	86	3000	3 - 28	10	23.4 x 11	3 mm Standoff
PT-2035FPLQ	86	3000	3 - 28	10	23.4 x 11	6 mm Standoff
PT-2036FPQ	86	3000	3 - 28	10	24 x 11	6 mm Standoff
PT-2036FPLQ	86	3000	3 - 28	10	24 x 11	12 mm Standoff
PT-2735FPQ	88	3500	3 - 28	10	30 x 10	3 mm Standoff
PT-2735FPLQ	88	3500	3 - 28	10	30 x 10	6 mm Standoff

Call 317-612-1000 or Visit www.mallory-sonalert.com for More Details

X-ON Electronics

Largest Supplier of Electrical and Electronic Components

Click to view similar products for [Piezo Buzzers & Audio Indicators](#) category:

Click to view products by [Mallory Sonalert](#) manufacturer:

Other Similar products are found below :

[6-4](#) [68S1240-PA](#) [MBA-624](#) [FDG06PSLLF](#) [FDG111PLF](#) [F/NRMB 24 BLACK LF](#) [PF-35N29WQ](#) [PFD-21A29W](#) [PFD-27A35PQ](#) [PL-21N30WQ](#) [PL-27A35PSQ](#) [PLD-21N30W](#) [PLD-21N30WQ](#) [PS-531Q](#) [PT-3534FP](#) [EBPT-401](#) [B822B](#) [B/CP28/100DB/BLACK LF](#) [PB-1220PEQ](#) [S6109](#) [SBM616PR](#) [SC110E](#) [SC2036ACP](#) [SC616N-2](#) [SC628FW](#) [SC628MPG](#) [SC648D](#) [SCS045MD9DT3S](#) [ESZ-25B-5-250B](#) [FCM12PLF](#) [F/EB20P-DR LF](#) [F/SMD03A LF](#) [FSMD8585JSLF](#) [F/SU 21-02 LF](#) [F/TCW 12 WITH LABEL LF](#) [F/UCW 06 WITH LABEL LF](#) [PFD-27N36W](#) [PKM22EPPH40S1-B0](#) [PKM35-4A0](#) [PL-35N29WQ](#) [PS-552Q](#) [CM-5](#) [REF-202](#) [B/SE 128 RED LF](#) [KBS-20DA-7AS](#) [KBS-27DA-5C-105](#) [LSC628ANR](#) [03-810.001](#) [RTO-1R07-001](#) [PL-21N31PQ](#)