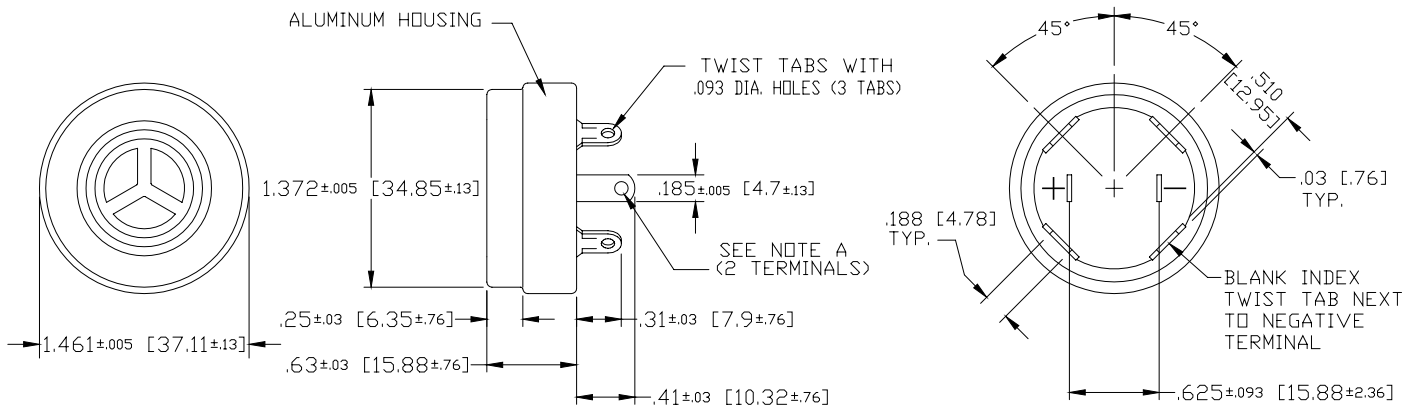


**Sales Outline Drawing**

**OBSOLETE- No Direct Replacement. Substitutes Include: SBM428 & SC628 Specifications:**

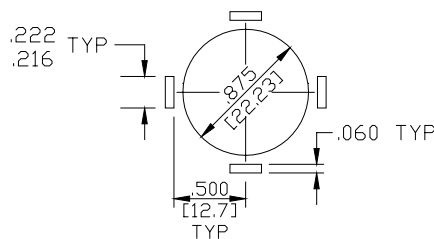
Sound level Category	Low Sound Level
Mode of Operation	Continuous
Mounting	Panel (see note B)
Voltage Rating	20 - 30 Vdc
Frequency	3500 Hz ±500 Hz
Loudness (Min. Voltage)	70 dB(A) min. @ 2 FT and 20 Vdc
Loudness (Max Voltage)	76 dB(A) min. @ 2FT and 30 Vdc
Current Draw	18 mA Max @ 20 Vdc
Current Draw	26 mA Max @ 30 Vdc
Storage Temperature	-40°C to +85°C
Operating Temperature	-30°C to +65°C
Weight (Typical)	0.6 oz (17 g)
Housing	Clear Aluminum
Options	For other options contact factory

**Dimensions:** Inches (mm)



NOTE A:  
TERMINALS - .032 STEEL, TIN PLATED WITH .093 DIA. WIRE HOLE, WILL ACCEPT STANDARD 3/16" QUICK CONNECT

NOTE B:  
MOUNTING - CHASSIS CUT-OUT FOR DIRECT MOUNTING - FOUR TWIST TABS PER EIA STD RS395 ARE PROVIDED. TERMINALS ARE ELECTRICALLY ISOLATED FROM CASE AND TWIST TABS.



## X-ON Electronics

Largest Supplier of Electrical and Electronic Components

*Click to view similar products for [Mallory Sonalert](#) manufacturer:*

Other Similar products are found below :

[PK-16N04WA-01Q](#) [MSE28MSN2S](#) [SC110HJ](#) [SC250HR](#) [SC250N](#) [SC616N-2](#) [SC616P](#) [SC616Q](#) [SC628AEJ](#) [SC628NL](#) [SCE028XA3CTB](#)  
[SCE028XA3PS1B](#) [SNP428FR](#) [ZA028LDSP1](#) [MSE14LCH2S](#) [SCE028MD2CT1B](#) [PLD-21N30PQ](#) [VSB110-2](#) [VSB110-1](#) [PH-150Q](#)  
[MSS5MMV](#) [SCE028LD2CT1B](#) [SC616NP-BTR](#) [SBT12MMVPC](#) [ZA120SACT](#) [ZA028LDSR9](#) [SNP2](#) [SC648CPNR](#) [SC648HR](#)  
[SCE016MD3PS1B](#) [SCE028XD3MG5B](#) [PT-2726FPQ](#) [SCE016XD3MG5F](#) [JT120-RYG-CSL](#) [JT028-RYGBC-CS](#) [JT028-RG-CDL](#) [JT028-](#)  
[RYGB-CSL](#) [JT120-R-CS](#) [JT120-RY-CSL](#) [JT120-RY-CS](#) [JT120-RYG-CD](#) [JT120-RYG-CDL](#) [JT028-RG-CSL](#) [SCE016LD2CTB](#) [JT120-R-](#)  
[CSL](#) [JT120-RG-CSL](#) [JT028-R-CD](#) [JT028-RYGB-CDL](#) [JT028-RYG-CSL](#) [SC616J-1R](#)