



# SLP12N65C / SLF12N65C

## 650V N-Channel MOSFET

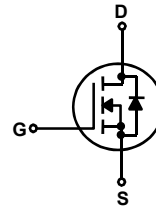
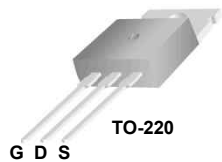
SLP12N65C / SLF12N65C

### General Description

This Power MOSFET is produced using Maple semi's advanced planar stripe DMOS technology. This advanced technology has been especially tailored to minimize on-state resistance, provide superior switching performance, and withstand high energy pulse in the avalanche and commutation mode. These devices are well suited for high efficiency switched mode power supplies, active power factor correction based on half bridge topology.

### Features

- 12A, 650V,  $R_{DS(on) typ.} = 0.6\Omega @ V_{GS} = 10V$
- Low gate charge ( typical 47nC)
- High ruggedness
- Fast switching
- 100% avalanche tested
- Improved dv/dt capability



### Absolute Maximum Ratings

$T_C = 25^\circ\text{C}$  unless otherwise noted

| Symbol         | Parameter   | SLP12N65C   | SLF12N65C | Units               |
|----------------|---|-------------|-----------|---------------------|
| $V_{DSS}$      | Drain-Source Voltage  | 650         |           | V                   |
| $I_D$          | Drain Current - Continuous ( $T_C = 25^\circ\text{C}$ )<br>- Continuous ( $T_C = 100^\circ\text{C}$ ) | 12          | 12 *      | A                   |
|                |   | 7.2         | 7.2 *     | A                   |
| $I_{DM}$       | Drain Current - Pulsed (Note 1)   | 48          | 48 *      | A                   |
| $V_{GSS}$      | Gate-Source Voltage   | $\pm 30$    |           | V                   |
| EAS            | Single Pulsed Avalanche Energy (Note 2)   | 230         |           | mJ                  |
| $I_{AR}$       | Avalanche Current (Note 1)  | 12          |           | A                   |
| $E_{AR}$       | Repetitive Avalanche Energy (Note 1)  | 25.92       |           | mJ                  |
| dv/dt          | Peak Diode Recovery dv/dt (Note 3)  | 4.5         |           | V/ns                |
| $P_D$          | Power Dissipation ( $T_C = 25^\circ\text{C}$ )<br>- Derate above $25^\circ\text{C}$                   | 259         | 42        | W                   |
|                |   | 2.07        | 0.34      | W/ $^\circ\text{C}$ |
| $T_J, T_{STG}$ | Operating and Storage Temperature Range   | -55 to +150 |           | $^\circ\text{C}$    |
| $T_L$          | Maximum lead temperature for soldering purposes,<br>1/8" from case for 5 seconds                      | 300         |           | $^\circ\text{C}$    |

\* Drain current limited by maximum junction temperature.

### Thermal Characteristics

| Symbol          | Parameter                               | SLP12N65C | SLF12N65C | Units                     |
|-----------------|---|-----------|-----------|---------------------------|
| $R_{\theta JC}$ | Thermal Resistance, Junction-to-Case    | 0.48      | 2.98      | $^\circ\text{C}/\text{W}$ |
| $R_{\theta JS}$ | Thermal Resistance, Case-to-Sink Typ.   | 0.5       | --        | $^\circ\text{C}/\text{W}$ |
| $R_{\theta JA}$ | Thermal Resistance, Junction-to-Ambient | 62.5      | 62.5      | $^\circ\text{C}/\text{W}$ |

**Electrical Characteristics** $T_C = 25^\circ\text{C}$  unless otherwise noted

| Symbol  | Parameter   | Test Conditions  | Min | Typ   | Max  | Units               |
|---|---|--|-----|-------|------|---------------------|
| <b>Off Characteristics</b>                                    |   |  |     |       |      |                     |
| $BV_{DSS}$  | Drain-Source Breakdown Voltage                        | $V_{GS} = 0\text{ V}, I_D = 250\text{ }\mu\text{A}$                                    | 650 | --    | --   | V                   |
| $\frac{\Delta BV_{DSS}}{\Delta T_J}$                          | Breakdown Voltage Temperature Coefficient             | $I_D = 250\text{ }\mu\text{A}$ , Referenced to $25^\circ\text{C}$                      | --  | 0.65  | --   | V/ $^\circ\text{C}$ |
| $I_{DSS}$   | Zero Gate Voltage Drain Current                       | $V_{DS} = 650\text{ V}, V_{GS} = 0\text{ V}$   | --  | --    | 1    | $\mu\text{A}$       |
|   |   | $V_{DS} = 520\text{ V}, T_C = 125^\circ\text{C}$                                       | --  | --    | 10   | $\mu\text{A}$       |
| $I_{GSSF}$  | Gate-Body Leakage Current, Forward                    | $V_{GS} = 30\text{ V}, V_{DS} = 0\text{ V}$  | --  | --    | 100  | nA                  |
| $I_{GSSR}$  | Gate-Body Leakage Current, Reverse                    | $V_{GS} = -30\text{ V}, V_{DS} = 0\text{ V}$   | --  | --    | -100 | nA                  |
| <b>On Characteristics</b>                                     |   |  |     |       |      |                     |
| $V_{GS(th)}$  | Gate Threshold Voltage                                | $V_{DS} = V_{GS}, I_D = 250\text{ }\mu\text{A}$  | 2.0 | --    | 4.0  | V                   |
| $R_{DS(on)}$  | Static Drain-Source On-Resistance                     | $V_{GS} = 10\text{ V}, I_D = 6\text{ A}$   | --  | 0.6   | 0.72 | $\Omega$            |
| $g_{FS}$  | Forward Transconductance                              | $V_{DS} = 40\text{ V}, I_D = 6\text{ A}$ (Note 4)                                      | --  | 11    | --   | S                   |
| <b>Dynamic Characteristics</b>                                |   |  |     |       |      |                     |
| $C_{iss}$   | Input Capacitance                                     | $V_{DS} = 25\text{ V}, V_{GS} = 0\text{ V},$<br>$f = 1.0\text{ MHz}$                   | --  | 2214  | --   | pF                  |
| $C_{oss}$   | Output Capacitance                                    |  | --  | 196   | --   | pF                  |
| $C_{riss}$  | Reverse Transfer Capacitance                          |  | --  | 13    | --   | pF                  |
| <b>Switching Characteristics</b>                              |   |  |     |       |      |                     |
| $t_{d(on)}$   | Turn-On Delay Time                                    | $V_{DD} = 325\text{ V}, I_D = 12\text{ A},$<br>$R_G = 25\text{ }\Omega$<br>(Note 4, 5) | --  | 37.5  | --   | ns                  |
| $t_r$   | Turn-On Rise Time                                     |  | --  | 26.5  | --   | ns                  |
| $t_{d(off)}$  | Turn-Off Delay Time                                   |  | --  | 191.5 | --   | ns                  |
| $t_f$   | Turn-Off Fall Time                                    |  | --  | 50.5  | --   | ns                  |
| $Q_g$   | Total Gate Charge                                     | $V_{DS} = 520\text{ V}, I_D = 12\text{ A},$<br>$V_{GS} = 10\text{ V}$<br>(Note 4, 5)   | --  | 47    | --   | nC                  |
| $Q_{gs}$  | Gate-Source Charge                                    |  | --  | 10.5  | --   | nC                  |
| $Q_{gd}$  | Gate-Drain Charge                                     |  | --  | 16.3  | --   | nC                  |
| <b>Drain-Source Diode Characteristics and Maximum Ratings</b> |   |  |     |       |      |                     |
| $I_S$   | Maximum Continuous Drain-Source Diode Forward Current |  | --  | --    | 12   | A                   |
| $I_{SM}$  | Maximum Pulsed Drain-Source Diode Forward Current     |  | --  | --    | 48   | A                   |
| $V_{SD}$  | Drain-Source Diode Forward Voltage                    | $V_{GS} = 0\text{ V}, I_S = 12\text{ A}$   | --  | --    | 1.4  | V                   |
| $t_{rr}$  | Reverse Recovery Time                                 | $V_{GS} = 0\text{ V}, I_S = 12\text{ A},$  | --  | 688   | --   | ns                  |
| $Q_{rr}$  | Reverse Recovery Charge                               | $di_F / dt = 100\text{ A}/\mu\text{s}$ (Note 4)  | --  | 6.23  | --   | $\mu\text{C}$       |

**Notes:**

1. Repetitive Rating : Pulse width limited by maximum junction temperature
2.  $L = 3\text{ mH}, I_{AS} = 12\text{ A}, V_{DD} = 50\text{ V}, R_G = 25\text{ }\Omega$ , Starting  $T_J = 25^\circ\text{C}$
3.  $I_{SD} \leq 12\text{ A}, di/dt \leq 200\text{ A}/\mu\text{s}, V_{DD} \leq BV_{DSS}$ , Starting  $T_J = 25^\circ\text{C}$
4. Pulse Test : Pulse width  $\leq 300\mu\text{s}$ , Duty cycle  $\leq 2\%$
5. Essentially independent of operating temperature

### Typical Characteristics

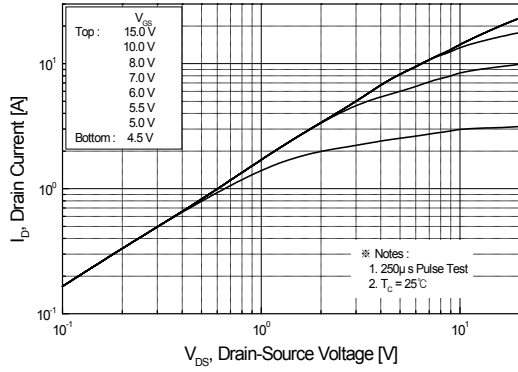


Figure 1. On-Region Characteristics

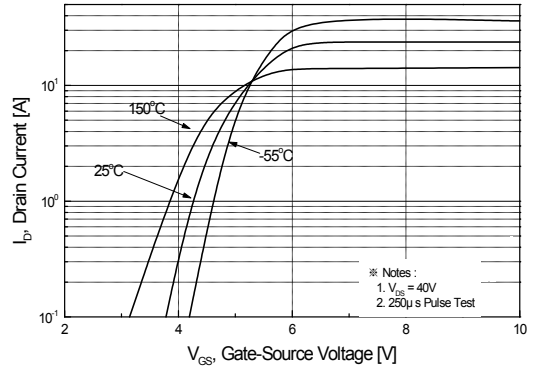


Figure 2. Transfer Characteristics

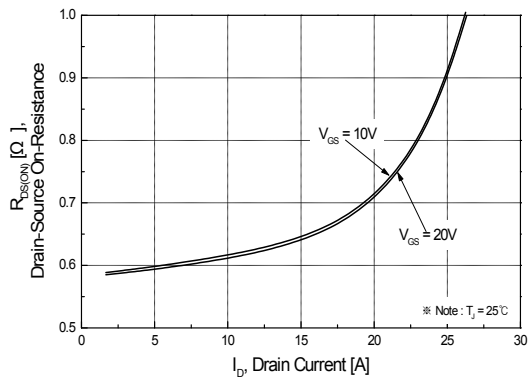


Figure 3. On-Resistance Variation vs Drain Current and Gate Voltage

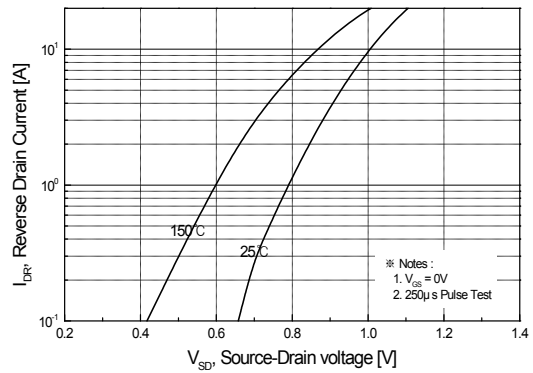


Figure 4. Body Diode Forward Voltage Variation with Source Current and Temperature

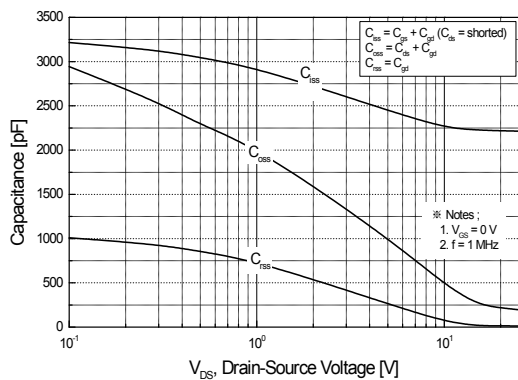


Figure 5. Capacitance Characteristics

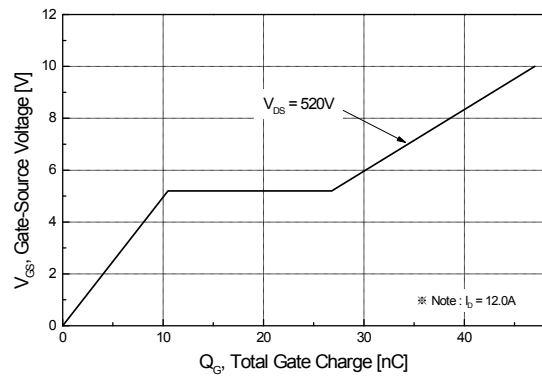


Figure 6. Gate Charge Characteristics

Typical Characteristics (Continued)

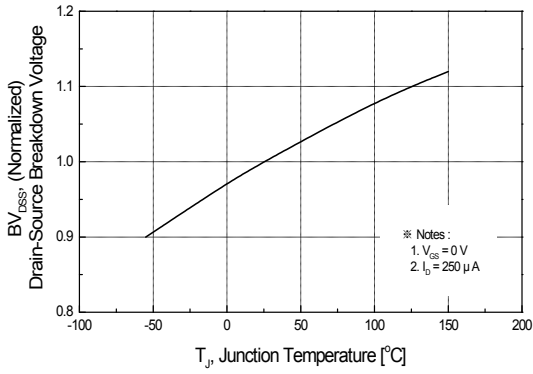


Figure 7. Breakdown Voltage Variation vs Temperature

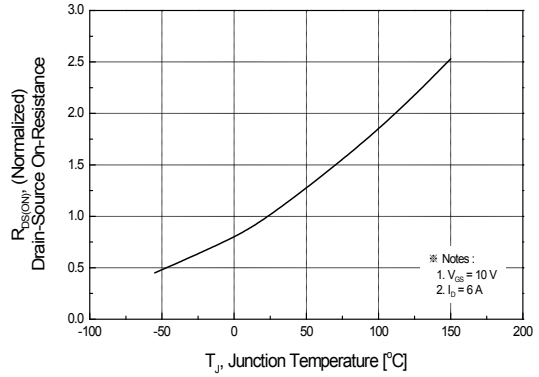


Figure 8. On-Resistance Variation vs Temperature

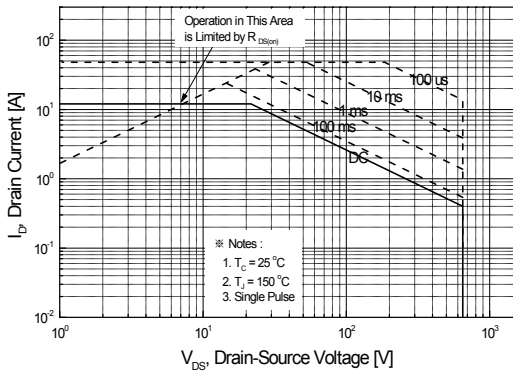


Figure 9-1. Maximum Safe Operating Area for SLP12N65C

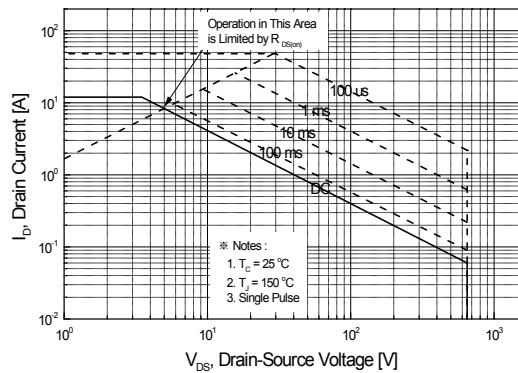


Figure 9-2. Maximum Safe Operating Area for SLF12N65C

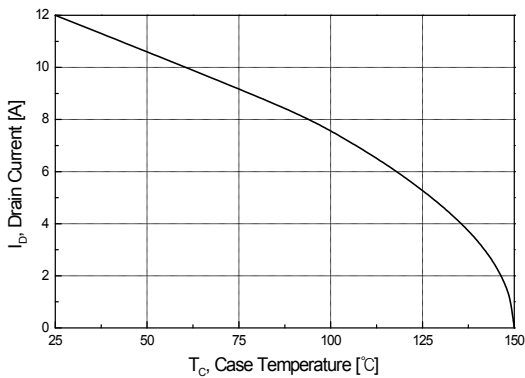


Figure 10. Maximum Drain Current vs Case Temperature

Typical Characteristics (Continued)

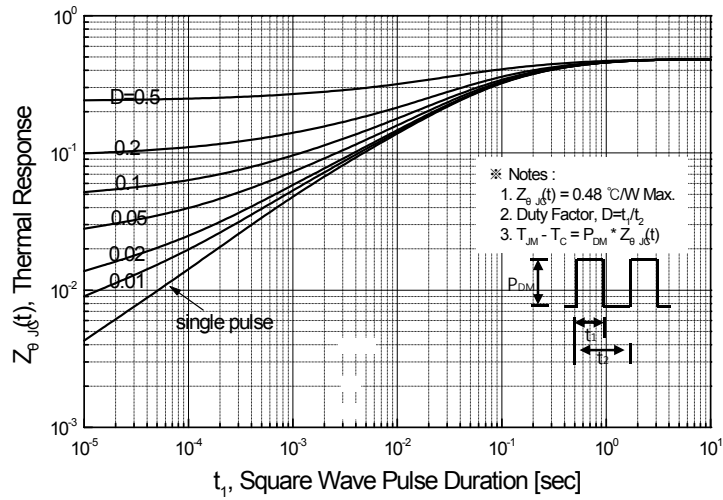


Figure 11-1. Transient Thermal Response Curve for SLP12N65C

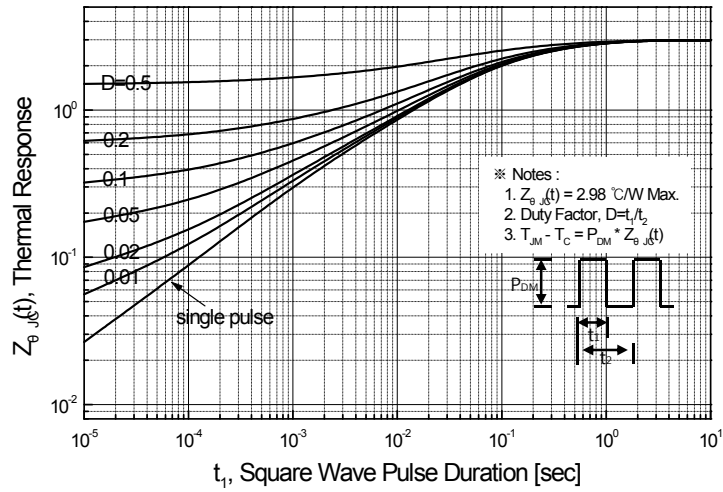
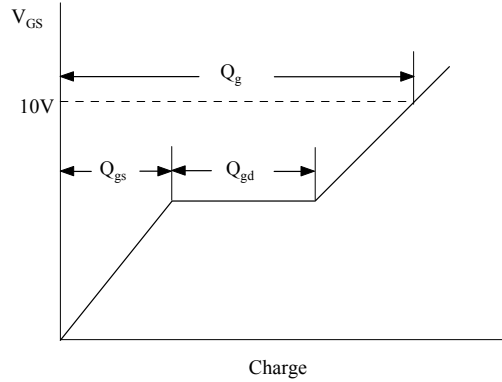
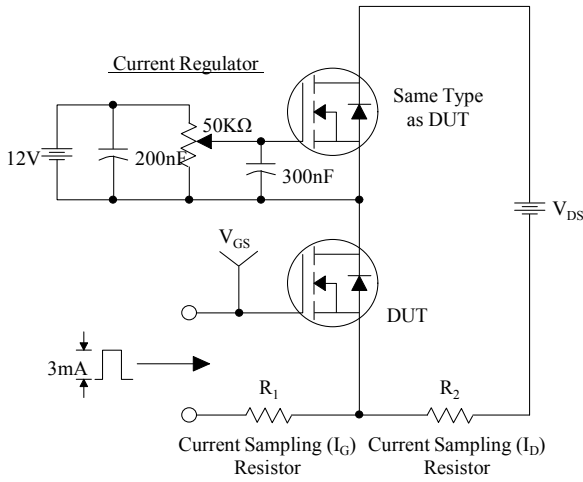
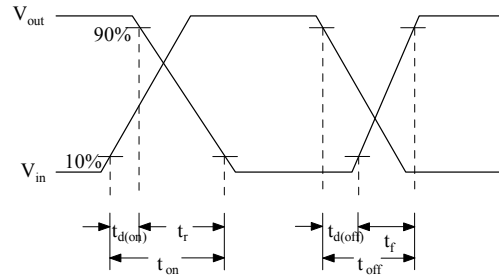
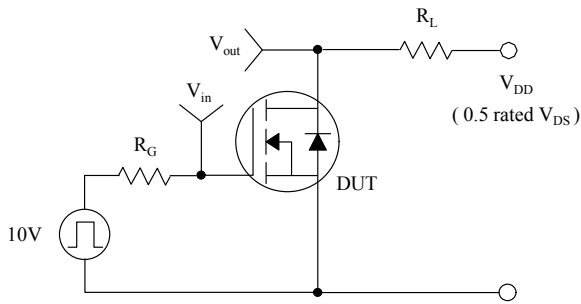


Figure 11-2. Transient Thermal Response Curve for SLF12N65C

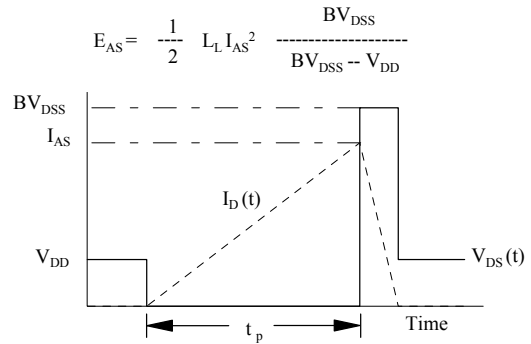
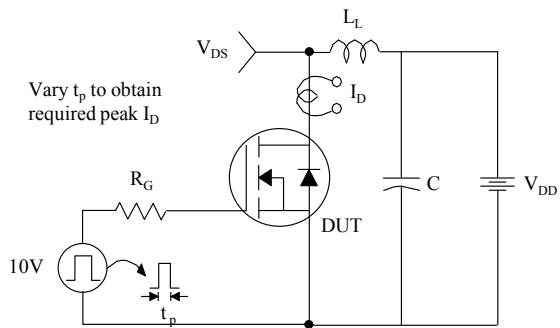
### Gate Charge Test Circuit & Waveform



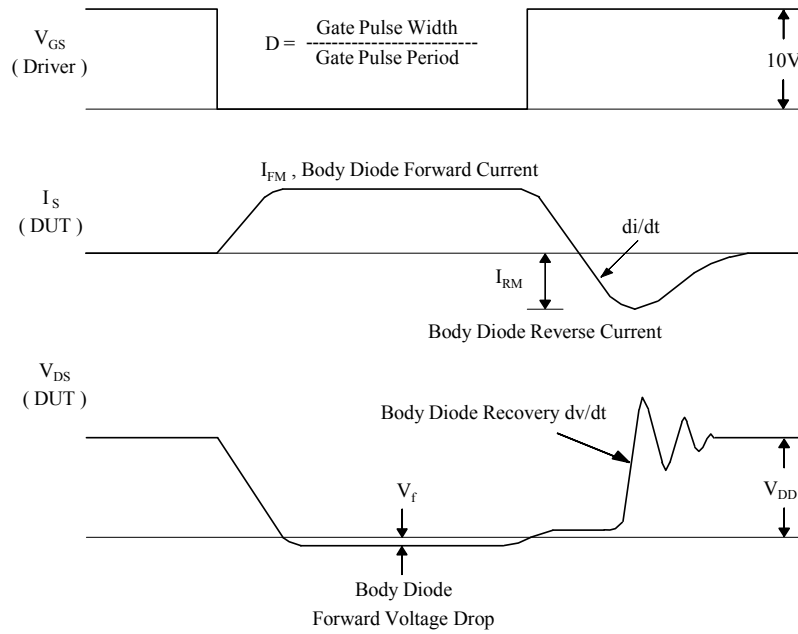
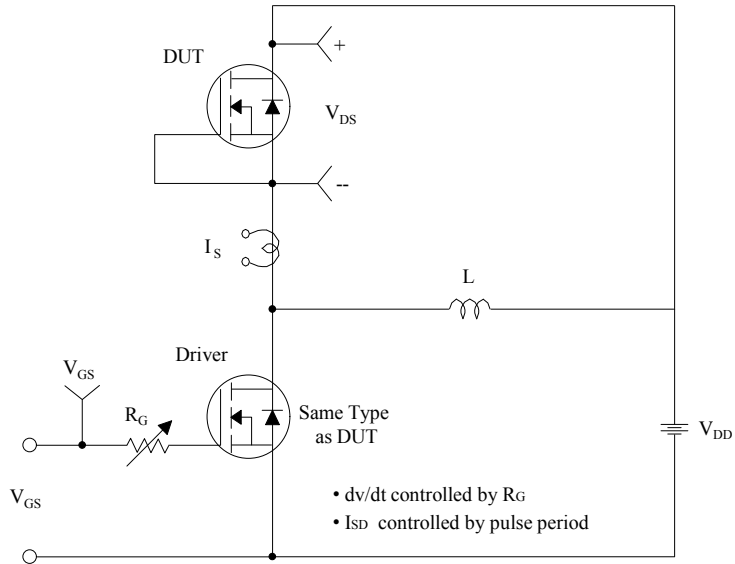
### Resistive Switching Test Circuit & Waveforms



### Unclamped Inductive Switching Test Circuit & Waveforms



### Peak Diode Recovery dv/dt Test Circuit & Waveforms



## X-ON Electronics

Largest Supplier of Electrical and Electronic Components

*Click to view similar products for [MOSFET](#) category:*

*Click to view products by [Maplesemi](#) manufacturer:*

Other Similar products are found below :

[614233C](#) [648584F](#) [MCH3443-TL-E](#) [MCH6422-TL-E](#) [FDPF9N50NZ](#) [FW216A-TL-2W](#) [FW231A-TL-E](#) [APT5010JVR](#) [NTNS3A92PZT5G](#)  
[IRF100S201](#) [JANTX2N5237](#) [2SK2464-TL-E](#) [2SK3818-DL-E](#) [FCA20N60\\_F109](#) [FDZ595PZ](#) [STD6600NT4G](#) [FSS804-TL-E](#) [2SJ277-DL-E](#)  
[2SK1691-DL-E](#) [2SK2545\(Q,T\)](#) [D2294UK](#) [405094E](#) [423220D](#) [MCH6646-TL-E](#) [TPCC8103,L1Q\(CM](#) [367-8430-0972-503](#) [VN1206L](#)  
[424134F](#) [026935X](#) [051075F](#) [SBVS138LT1G](#) [614234A](#) [715780A](#) [NTNS3166NZT5G](#) [751625C](#) [873612G](#) [IRF7380TRHR](#)  
[IPS70R2K0CEAKMA1](#) [RJK60S3DPP-E0#T2](#) [RJK60S5DPK-M0#T0](#) [APT5010JVFR](#) [APT12031JFLL](#) [APT12040JVR](#) [DMN3404LQ-7](#)  
[NTE6400](#) [JANTX2N6796U](#) [JANTX2N6784U](#) [JANTXV2N5416U4](#) [SQM110N05-06L-GE3](#) [SIHF35N60E-GE3](#)