

## Enhanced Sensitivity Wavelengths: 250nm-1750nm

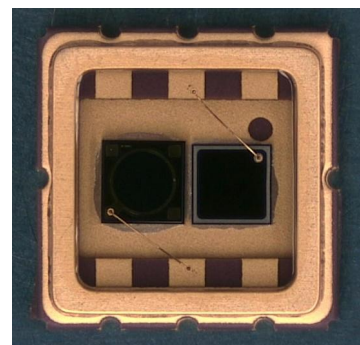
The MT03-047 is a Multi Spectral Photodiode in a ceramic SAW package. It is specifically designed for use with wavelengths ranging from 250nm Ultraviolet (UV) to 1750nm Short Wave Infrared (SWIR).

### FEATURES

- > Ultra low noise
- > High Shunt Resistance
- > Wide Dynamic Range
- > 365nm Enhanced Silicon/1300nm InGaAs SWIR

### APPLICATIONS

- > Medical
- > Industrial
- > Communications
- > Security



## Absolute Maximum Ratings



ITEMS	SYMBOL	RATINGS	UNIT
Reverse Voltage	Vr	50	V
Operating Temperature Range	Topr	-40 ~ +100	°C
Storage Temperature Range	Tstg	-55 ~ +125	°C
Lead Soldering Temperature *1	Tls	260	°C

\*1: Time 5 Sec max, Position: Up to 3mm from the body.

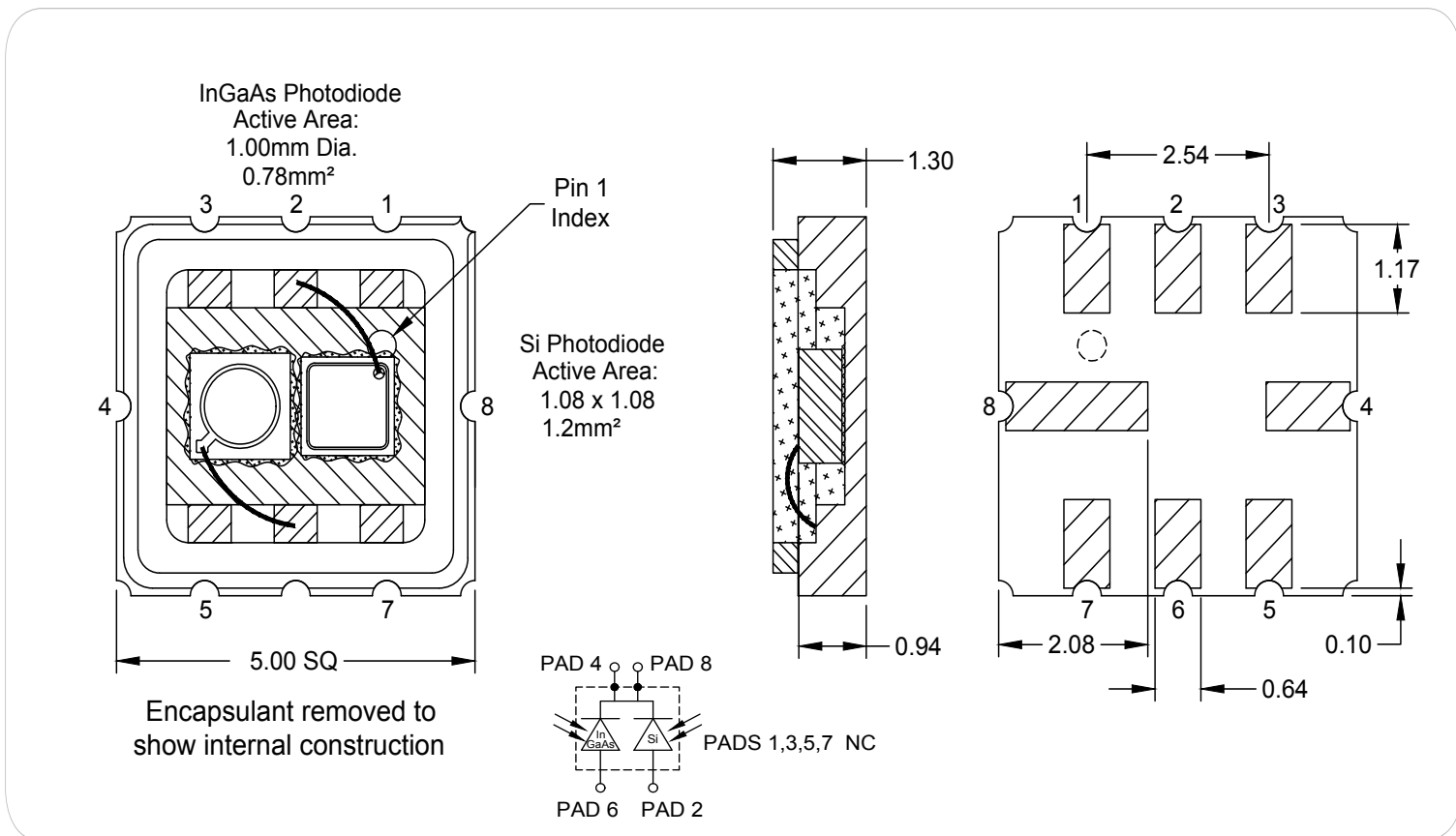
## Electrical & Optical Characteristics (1.2mm Silicon-PD) Ta = 23°C

ITEMS	SYMBOL	CONDITIONS	MIN	TYP	MAX	UNIT
Dark Current	Id	Vr=5V	--	0.1	1.0	nA
Forward Voltage	Vf	If=2mA	--	--	0.8	V
Breakdown Voltage	Vb	Ir=10uA	3.0	--	--	V
Spectral Sensitivity Range	$\lambda$	--	250	--	1100	nm
Peak Sensitivity Wavelength	$\lambda_p$	--	--	950	--	nm
Responsivity	Rt	Vr=0V, $\lambda=400$ nm	0.20	0.28	--	A/W
Responsivity	Rt	Vr=0V, $\lambda=633$ nm	--	0.40	--	A/W
Rise Time @ 365nm	Vf	Vr=0V, RI=1k $\Omega$	--	100	--	ns
Junction Capacitance	Cj	at 1MHz, Vr=0V	--	20	--	pF
Junction Capacitance	Cj	at 1MHz, Vr=5V	--	6	8	pF
Shunt Resistance	Rsh	Vr=10mV	1000	2000	--	m $\Omega$

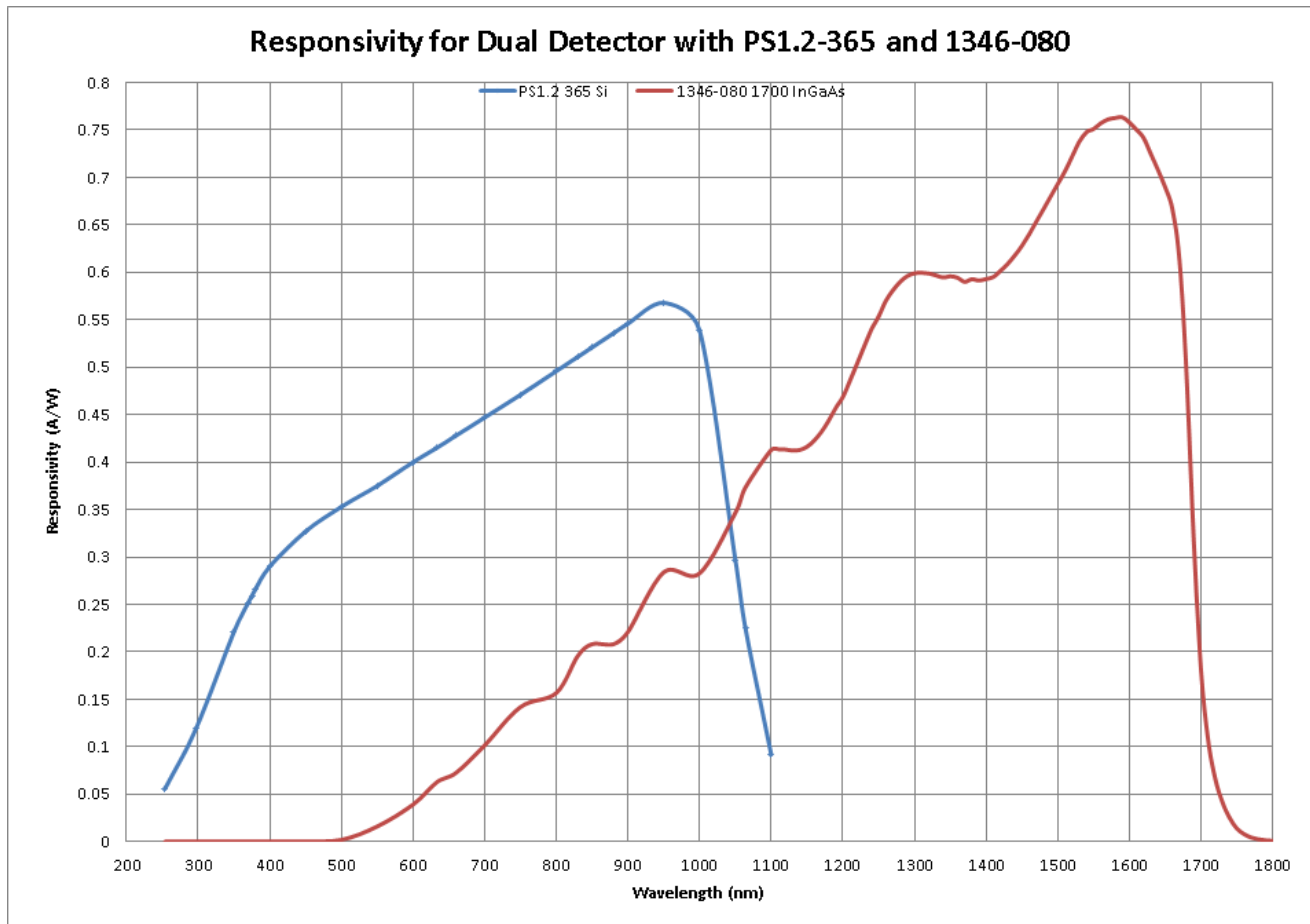
Electrical & Optical Characteristics (1.0mm InGaAs-PD) Ta = 25°C

ITEMS	SYMBOL	CONDITIONS	MIN	TYP	MAX	UNIT
Dark Current	$I_d$	$V_r=2V$	--	--	2000	nA
Forward Voltage	$V_f$	$I_f=10mA$	--	0.6	--	V
Breakdown Voltage	$V_b$	$I_r=10\mu A$	5	--	--	V
Spectral Sensitivity Range	$\lambda$	--	600	--	1750	nm
Peak Sensitivity Wavelength	$\lambda_p$	--	--	1590	--	nm
Responsivity	$R_t$	$V_r=0V, \lambda=950nm$	--	0.4	--	A/W
Responsivity	$R_t$	$V_r=0V, \lambda=1550nm$	--	0.7	--	A/W
Junction Capacitance	$C_j$	$V_r=0V$	--	60	--	pF
Rise Time @ 950nm	$V_f$	$V_r=0V, R_l=1k\Omega$	--	1.0	--	ns

Package Dimensions



## Responsivity



## X-ON Electronics

Largest Supplier of Electrical and Electronic Components

*Click to view similar products for [Photodiodes](#) category:*

*Click to view products by [Marktech](#) manufacturer:*

Other Similar products are found below :

[BPW 34 FAS-Z](#) [67-21SYGC-S349-TR8](#) [HFD3081-108-XBA](#) [BPW 34 S E9601](#) [MICROFJ-60035-TSV-TR](#) [ZSPD-Z3215B-10-Z2](#) [PT908-7B\(BIN4\)](#) [PT204-6B\(BY\)\(K\)](#) [PT928-6C/MA\(XBY\)](#) [PT908-7C\(BIN5\)](#) [PT968-8B\(6-2\)](#) [PT968-8C\(6-1\)](#) [PT204-6B\(BY\)\(J\)](#) [PT968-8B\(6-1\) PD70-01C/TR7\(BY\)](#) [PT968-8C\(6-2\)](#) [XYC-PD3020F90-S3](#) [ZSPD-Z3215C-10A-Z2](#) [ZSPD-Z3227B-10C-Z3](#) [ZSPD-Z3227C-10-Z3](#) [PD15-22C/TR8\(BY\)](#) [ZPD-Z3224B-T26-T15\(YPX\)](#) [ZSPD-Z5042C-A10-Z1](#) [ZSPD053B-S40](#) [PT334-6C\(BY\)\(K\)](#) [PT968-8C\(X1-X4\)XBY](#) [PT334-6B\(BY\)\(K\)](#) [PT928-6C\(5-2\)](#) [PT334-6B\(BY\)\(L\)](#) [PT333-3B\(BY\)\(K\)](#) [PT334-6B\(BY\)\(M\)](#) [XYC-PD2835F30-F1](#) [XYC-PD204B-L1](#) [XYC-PD3A940FC-F1](#) [XYC-PD4335F90-E2](#) [ZSPD808B](#) [ZSPD818B](#) [ZSPD034B-N](#) [ZSPD888C](#) [ZSPD053B-90-S90](#) [PD234-6B/L3](#) [PD70-01C/TR7\(ORI\)](#) [NCD2516RGI1](#) [NCD3220S1](#) [NCD4437S1](#) [NCD1816RGI1](#) [XYC-PD333B-L2](#) [XYC-PD5AB940DC-E9](#) [XL-504PDC](#) [XL-304PDC](#)