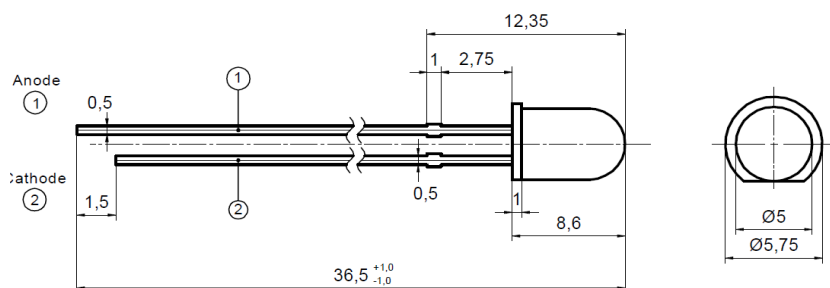


### Peak Emission Wavelength: 1550nm



#### Description

- Standard 5mm plastic lens package housed without standoff leads
- Type: MQW
- High power
- High speed infrared

#### Application

- Optical communication
- Safety equipment
- Automation

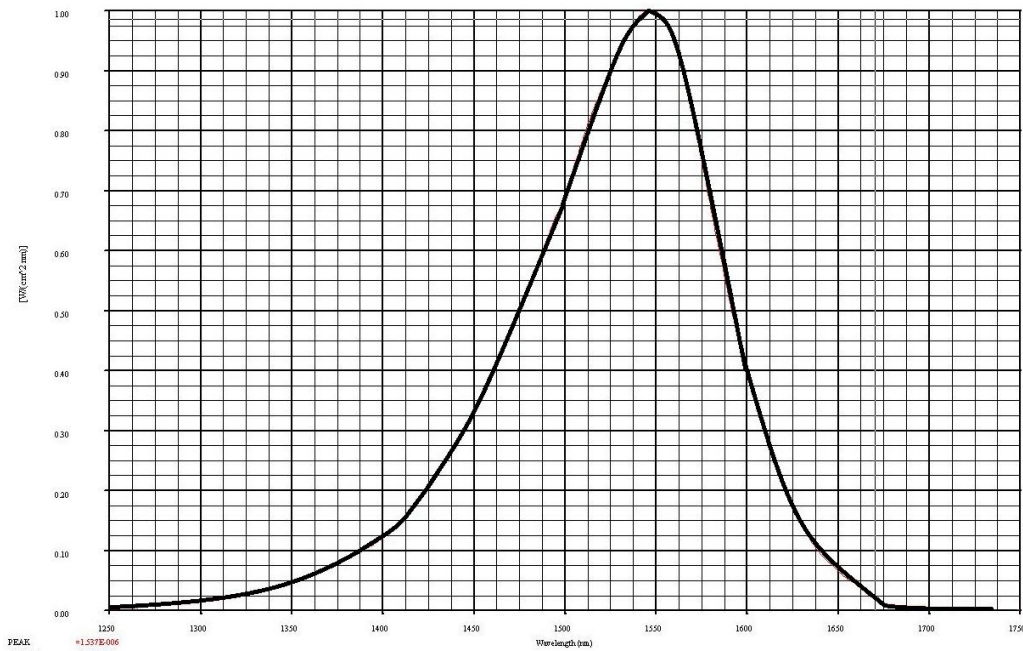
### Absolute Maximum Ratings (Ta=25°C)



ITEMS	TEST CONDITIONS	SYMBOL	RATINGS	UNIT
Forward DC Current		If	100	mA
Peak Forward Current	(tp ≤ 50us, tp/T=1/2)	Ifp	200	mA
Power Dissipation		Pd	150	mW
Operating Temperature Range		Top	-20 to +80	°C
Storage Temperature Range		Tstg	-55 to +100	°C
Lead Soldering Temperature	t<5s, 3mm from case	Tslg	260	°C

### Electrical & Optical Characteristics (Ta = 25°C)

ITEMS	SYMBOL	CONDITIONS	MIN	TYP	MAX	UNIT
Forward Voltage	Vf	If=20mA	--	0.75	0.9	V
Forward Voltage	Vf	If=100mA	--	0.85	1	V
Reverse Voltage	Vr	Ir=10uA	5	--	--	V
Radiant Power	Φe	If=20mA	--	0.9	--	mW
Radiant Power	Φe	If=100mA	--	3.3	--	mW
Radiant Intensity	Ie	If=20mA	--	2.2	--	mW/sr
Radiant Intensity	Ie	If=100mA	--	11	--	mW/sr
Peak Wavelength	λp	If=20mA	1530	1550	1570	nm
Spectral Bandwidth at 50%	Δλ0.5	If=20mA	--	130	--	nm
Viewing Angle	φ	If=20mA	--	20	--	deg
Switching Time	tr, tf	If=20mA	--	10	--	ns



## X-ON Electronics

Largest Supplier of Electrical and Electronic Components

*Click to view similar products for [Infrared Emitters](#) category:*

*Click to view products by [Marktech](#) manufacturer:*

Other Similar products are found below :

[LTE-309](#) [LTE-3279K](#) [LTE-4206C](#) [LTE-4208C](#) [EAILP03RDAA6](#) [LTE-2871C](#) [LTE-4238](#) [ASDL-4264-C22](#) [OED-EL305F4C50-HT](#) [OP216-004](#) [LTE-3376](#) [EEL109](#) [HL-PST-1608IR1C-L4](#) [SFH 7016](#) [IN-S126ETIR](#) [IN-S126DSHIR](#) [IN-S126ETHIR](#) [IN-P32ZTHIR](#) [IN-S42CTQHIR](#) [IN-S126BTHIR](#) [IN-S63DTHIR](#) [IN-S85BTHIR](#) [IN-S63FTHIR](#) [EAIST3535A1](#) [EAIST3535A4](#) [MHT153IRCT](#) [MHS153IRCT](#) [HIR204C/H0](#) [HIR323C](#) [LTE-209](#) [IR12-21C/TR8](#) [IR17-21C/TR8](#) [IR26-21C/L110/TR8](#) [IR91-21C/TR10](#) [KM-4457F3C](#) [L-53F3BT](#) [WP3A10F3C](#) [LTE-4208](#) [OP235W](#) [IR42-21C/TR8](#) [HSDL-4261](#) [APA3010F3C-GX](#) [SE2460-140](#) [OP266-905](#) [OP280D](#) [LTE-2871](#) [HIR8323/C16](#) [KP-2012SF4C](#) [KPA-3010F3C](#) [L-7113SF6C](#)