

Fig. 3.: Diagrams of the operation principles of the TS-42-3 TWILIGHT SWITCH.

V. Repair and maintenance

All repairs of the TWILIGHT SWITCH TS-42-3 are performed by the manufacturer. The device does not require any maintenance. When the sensor becomes contaminated, clean it with a clean, damp cloth. The device does not require any additional maintenance.

VI. Warranty Card

The manufacturer guarantees the correct operation of the TS-42-3 TWILIGHT SWITCH. The warranty period is 36 months from the date of sale. The warranty is extended by the time of repair. Warranty repairs are performed by the manufacturer free of charge after the AUTOMAT is delivered to the manufacturer. Improper use of the device or independent modifications to it will void the warranty.



www.mart-electronics.eu

Made in Europe



The TS-42-3 TWILIGHT SWITCH meets the requirements of the European Union Directives:
 - Directive LVD 2014/35/EU - Low Voltage Directive of 26 February 2014
 - Directive EMC 2014/30/EU - Electromagnetic Compatibility Directive of 26 February 2014



In order to protect the environment, do not throw away used electrical appliances and electronics together with municipal waste. Used equipment should be delivered to collection points for recycling free of charge. Any information on this can be obtained at sellers, distributors, manufacturer or on the Internet. The product's packaging is made of ecological materials. The PVC packaging tape will be used while stocks last.



TWILIGHT SWITCH
TS-42-3 ECO

MADE IN EUROPE

FIRST
ECO

3-YEAR
WARRANTY

User manual

I. Purpose

The TWILIGHT SWITCH TS-42-3 is designed to automatically switch the receiver on at the moment of dusk and turn it off at dawn, or vice versa (NO, NC contacts). Two independent knobs for setting the switch-on and switch-off thresholds allow for an optimal way to control the lighting. Independent adjustment of the activation thresholds corrects the location of the sensor (north, south, east, west) and eliminates the hysteresis that occurs in standard automatic units. Hysteresis causes switching off the lighting in the morning when the lighting intensity is higher (2 + 3 times) than the set lighting intensity level at which the lighting was turned on. This causes an unfavourable extension of the lighting operation time in the morning, which results in an increased consumption of electricity. On the other hand, too little hysteresis means that on cloudy days the lamp may turn on and off with changing weather conditions, which is not advisable, and sometimes even unacceptable for some lamps.

The light intensity measurement sensor has a spectrum similar to that of the human eye, and the adjustment thresholds have logarithmic characteristics - also similar to the characteristics of the human eye. Such an innovative design of the TS-42-3 TWILIGHT SWITCH makes the lighting control optimal, economic and ecological.

The TS-42-3 TWILIGHT SWITCH includes:

- >> TS-42 CONTROLLER - mounted in a distribution box on a 35 mm rail (one 18 mm module)
- >> OUTDOOR SENSOR (IP65) - surface-mounted box mounted to the wall with two screws with a PG9 gland to insert the cable. Connection cable not longer than 100m.

II. Features of the TWILIGHT SWITCH TS-42-3 ECO

- >> Independent regulation of activation and deactivation thresholds
- >> precise logarithmic adjustment:
 - > activation - 1 ... 10 ... 100 lx
 - > shutdown - 1 ... 10 ... 100 lx
- >> high switching power - 16A (4000 W) 250VAC, 16A (384 W) 24VDC
- >> high inrush current - resistance to 100 A surge current
- >> freedom of connections:
 - > executive relay contacts (one normally open contact - NO, one normally closed contact - NC) galvanically separated, which allows connections in various configurations
- >> traffic light (LED):
 - > Green LED - indication of 230V AC supply voltage on LN terminals
 - > LED red:
 - pulsating signalling (without delay) - the set (set) actuation threshold is exceeded
 - continuous light - the level of the measured illuminance is between the settings on knobs
 - > Blue LED - changeover indication - switching on (contact 1-2), disconnection (contact 2-3)
- >> 35mm rail mount - one 18mm module.

The TS-42-3 CONTROLLER uses a specialized OMRON G2RL-1-E-HR relay, designed to switch various types of lighting lamps. The special design of the relay enables effective switching of lamps with an inrush current up to 100 A.

III. Installation

The TS-42-3 TWILIGHT SWITCH may only be connected by a person authorized to operate electrical installations. Remember to choose the right protection.

On the front panel of the TS-42 CONTROLLER, there are three information LEDs: green, red, blue and two knobs for setting the activation thresholds in the ranges from 1 to 100 lux. There are connection diagrams and regulation characteristics on the side walls of the TS-42-3 CONTROLLER.

In order to connect the TS-42-3 TWILIGHT SWITCH you should:

1. mount the TS-42 CONTROLLER in the switchboard on a 35 mm rail
2. Fix the SENSOR on a vertical wall with two screws.

Lead the connection cable into the box from the bottom through the PG9 gland and connect to the terminal block. After mounting and screwing cables to the terminal strip, tightly screw the PG9 gland.

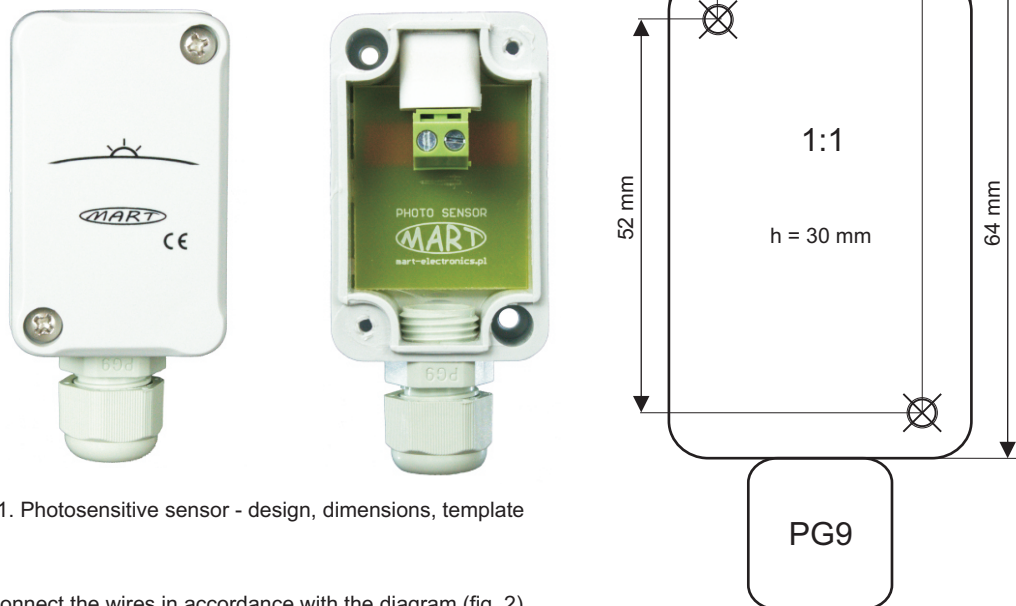


Fig 1. Photosensitive sensor - design, dimensions, template

3. Connect the wires in accordance with the diagram (fig. 2)
4. Turn on the supply voltage - the green LED will light up and the red and blue LEDs will blink twice
5. set the activation thresholds.

When, during dimming, the level set on the ON knob is exceeded, the red LED will start to "blink" (without delay), and after approx. 60 seconds the operating relay will switch, which will be signalled by the blue LED. The activation delay of 60s should be counted from the moment of stable flashing of the red LED.

Using the control knobs, set the desired value of the switch-on threshold ON and switch-off OFF. Check the operation of the TS-42-3 TWILIGHT SWITCH and, if necessary, correct the setting in real conditions (in the evening and in the morning). A red LED shining with a constant signal informs that the intensity of illumination falling on the sensor is in the range between the set positions of the knobs. In order for the TWILIGHT SWITCH to work properly, the measured intensity of lighting at night must be lower than the lowest setting, then the red LED will go out.

It should be remembered that the optimal setting of the activation thresholds has an impact on the costs of electricity used and contributes to the protection of the environment.

In order to limit the impact of temporary large changes in lighting, for example, car lamps, lightning flash, etc. on the operation of the TWILIGHT SWITCH, an actuation delay (approx. 60s) has been applied.

When setting the activation thresholds ON, OFF, remember that on a sunny day, covering the sensor with a bare hand may not be sufficient. Then you should cover the SENSOR more effectively.

The pictorial diagram of the TS-42-3 TWILIGHT SWITCH operation principle is shown in Fig. 3.

NOTE: Avoid mounting the SENSOR directly in the light beam of the lamp being switched on, because lighting with the SENSOR lamp may interfere with operation - the lamp will be switched on periodically and turned off from evening until morning. This effect will not occur if the threshold on the OFF knob is set higher than the illuminance level of the lamp that illuminates the sensor.

IV. Technical data

Rated supply voltage LN	230V AC, + 10%, - 15%
Rated frequency	50Hz
Maximum load current (power):	
> resistive load	16A, AC1 (4 000 W)
> incandescent lamps	10A (2500 W)
> halogen lamps	8A (2000 W)
> fluorescent lamps	8A (2000 W)
> energy-saving lamps and LED	8A (2000 W)
Instantaneous inrush current	100A
Executive contacts	1 x NO, 1 x NC
Rated power consumption	0,7 W
Logarithmic control range ON	1...10...100 lx
Logarithmic control range OFF	1...10...100 lx
Switch-on and switch-off delay	60s (± 10%)
Mechanical durability	100 000 operations
CONTROLLER protection level	
CONTROLLER protection level	IP 20
Installation of the CONTROLLER	
Installation of the CONTROLLER	One 18 mm field, 35 mm rail
CONTROLLER work position	
CONTROLLER work position	Vertical
CONTROLLER working temperature	
CONTROLLER working temperature	-25...+50 °C
CONTROLLER weight	
CONTROLLER weight	50g
SENSOR protection class	
SENSOR protection class	IP 65
SENSOR dimensions	
SENSOR dimensions	40mm x 30mm x 64mm + PG9
SENSOR assembly	
SENSOR assembly	Two screws
SENSOR working position	
SENSOR working position	Vertical
Cable length to the SENSOR	
Cable length to the SENSOR	Max 100 m (2 x 0,5 mm ²)
SENSOR working temperature	
SENSOR working temperature	-25...+50 °C
SENSOR weight	
SENSOR weight	50g

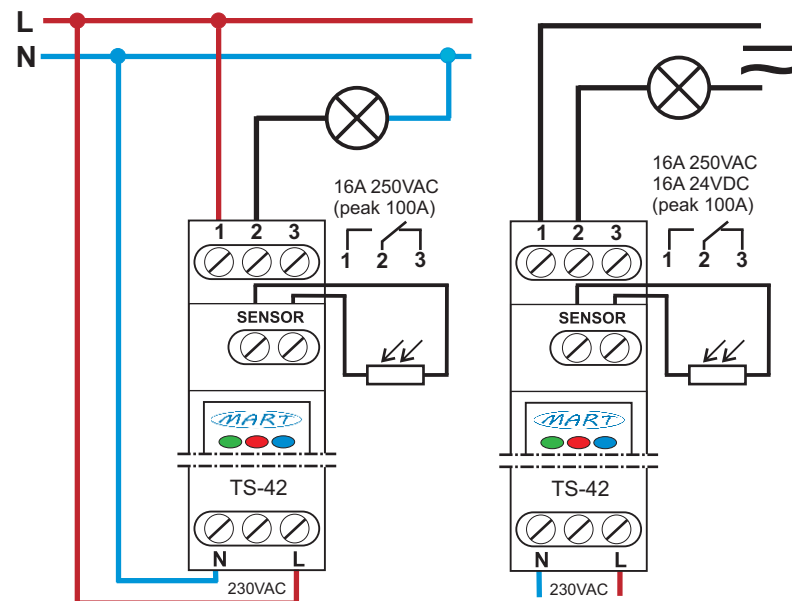


Fig. 2.: Connection diagrams for the TS-42-3 TWILIGHT SWITCH automatic device.

Why is it worth using for ECOLOGICAL and ECONOMICAL lighting control
TWILIGHT AUTOMATIC TS-42 series.

In general, lighting should be turned on optimally, that is, turned on when it is dark enough and turned off when it is bright enough. Seemingly simple, but not entirely.

The correct lighting control is influenced by:

- >> changeable weather conditions
- >> switch on threshold setting
- >> switch off threshold setting
- >> hysteresis
- >> characteristics of the illuminance measurement sensor
- >> regulatory characteristics

CHANGING ATMOSPHERIC CONDITIONS

The weather conditions at sunrise and sunset vary throughout the year. Sunrises and sunsets are slow-changing phenomena, and with cloudy twilight and sunrise, the intensity of lighting changes in a random and unpredictable manner. A TWILIGHT SWITCH should be designed to take this into account.

SENSOR POSITIONING

THE TWILIGHT SWITCH LIGHT SENSOR is usually mounted where there is a lamp or a convenient place for installation. Most often, we do not have much choice as to the direction of the sun's incidence on the sensor (north, south, east, west). Therefore, the possibility of independently set activation and deactivation thresholds corrects such a situation and enables the selection of optimal actuation parameters.

HYSTERESIS

Each typical TWILIGHT SWITCH has a hysteresis, which means that if we set the switch-on threshold (in the evening) 30 lux, the switch-off threshold (in the morning) will be at OFF = 2 x ON, i.e. 60 lux. Too little hysteresis will result in uncontrolled switching on and off of the lighting along with the change of weather conditions. This is an undesirable effect, and even unacceptable with some lamps.

SENSOR POSITIONING

X-ON Electronics

Largest Supplier of Electrical and Electronic Components

Click to view similar products for [Controllers](#) category:

Click to view products by [MART](#) manufacturer:

Other Similar products are found below :

[61FGPN8DAC120](#) [CV500SLK21](#) [70177-1011](#) [F03-03 HAS C F03-31](#) [81550401](#) [FT1A-C12RA-W](#) [H2CAC24A](#) [H2CRSAC110B](#) [R88A-CRGB003CR-E](#) [R88ARR080100S](#) [R88A-TK01K](#) [DCN1-1](#) [AFP0RT32CT](#) [DRT2ID08C](#) [DTB4896VRE](#) [DTB9696CVE](#) [DTB9696LVE](#) [E53-AZ01](#) [E53E01](#) [E53E8C](#) [E5C4Q40J999FAC120](#) [E5CWLQ1TCAC100240](#) [E5GNQ03PFLKACDC24](#) [B300LKL21](#) [NSCXDC1V3](#) [NSH5-232CW-3M](#) [NT20SST122BV1](#) [NV-CN001](#) [OAS-160-N](#) [C40PEDRA](#) [K31S6](#) [K33-L1B](#) [K3MA-F 100-240VAC](#) [K3TX-AD31A](#) [89750101](#) [L595020](#) [SRM1-C02](#) [SRS2-1](#) [G32X-V2K](#) [26546803](#) [26546805](#) [PWRA440A](#) [CPM1AETL03CH](#) [CV500SLK11](#) [3G2A5BI081](#) [3G2A5IA122](#) [3G2A5LK010E](#) [3G2A5OA223](#) [3G2A5OD211](#)