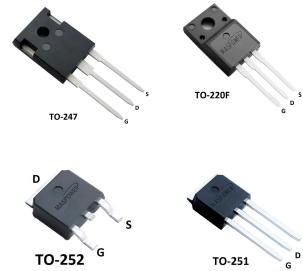


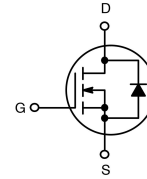
## features

- Low gate charge (typical 12nC)
- Low Crss (typical 5.5pF)
- 100% avalanche tested
- Fast switching
- Improved dv/dt capability



## Applications

- Switching application



## Electrical ratings

### Absolute maximum ratings

Parameter	Symbol	Value	Unit
Drain-source voltage ( $V_{GS}=0$ )	$V_{DS}$	1000	V
Gate-source voltage	$V_{GS}$	$\pm 30$	
Drain current (continuous) at $TC=25^{\circ}C$	$I_D$	3	A
Drain current (continuous) at $TC=100^{\circ}C$	$I_D$	2.1	
Drain current (pulsed)	$I_{DM}$	12	A
Avalanche current repetitive or not-repetitive (pulse width limited by $T_j$ Max)	IAR	3	A
Single pulse avalanche energy (starting $T_j=25^{\circ}C$ $I_D=I_{AR}$ $V_{DD}=50V$ )	EAS	300	mJ
Total dissipation at $TC=25^{\circ}C$ (TO-247)	PD	272	W
Total dissipation at $TC=25^{\circ}C$ (TO-252/TO-251)	PD	50	W
Drain source ESD (HBM-C=100pF, R=1.5KΩ)	$V_{ESD(GS)}$	4000	V
Peak diode recovery voltage slope	dv/dt	4.5	V/ns
Insulation withstand voltage(RMS)from all three leads to external heat sink ( $t=1s$ $TC=25^{\circ}C$ )	$V_{ISO}$	2500	v
Operating junction temperature	$T_J$	-55 to 175	$^{\circ}C$
Storage temperature	$T_{STG}$		

**Electrical characteristics** ( $T_{CASE}=25^{\circ}C$  unless otherwise specified)

**On/off states**

Parameter	Symbol	Test conditions	Min	Typ	Max	Unit
Drain-source breakdown voltage	V(BR)DSS	ID=1mA VGS=0	1000	-	-	V
Zero gate voltage drain current (VGS=0)	IDSS	VDS=Max rating	-	-	1	μA
		TC=125°C	-	-	100	μA
Gate body leakage current (VGS=0)	IGSS	VGS=±30V	-	-	±100	nA
Gate threshold voltage	VGS(th)	VDS=VGS ID=100μA	3.0	4.0	5.0	V
Static drain-source on resistance	RDS(on)	VGS=10V ID=1A	-	5.2	5.8	Ω

**Dynamic**

Parameter	Symbol	Test conditions	Min	Typ	Max	Unit
Forward transconductance	gfs	VDS = 15 V, ID = 1.75A	-	3	-	S
Input capacitance	Ciss	VDS=25V, f=1MHz, VGS=0	-	390	500	pF
Output capacitance	Coss		-	45	60	
Reverse transfer capacitance	Crss		-	5.5	7.0	
Total gate charge	Qg	VDD=800V, ID=3A VGS=10V	-	12	15	nC
Gate-source charge	Qgs		-	2.8	-	
Gate-drain charge	Qgd		-	6.1	-	
Turn-on delay time	td(on)	VDD = 500V, ID = 3A, RG = 25 Ω, VGS = 10 V	-	15	40	ns
Rise time	tr		-	35	80	
Turn-off-delay time	td(off)		-	20	50	
Fall time	tf		-	30	70	

**Source Drain Diode**

Parameter	Symbol	Test conditions	Min	Typ	Max	Unit
Source Drain Current	ISD		-	-	3	A
Source Drain Current(Pulsed)	ISDM		-	-	12	A
Forward On Voltage	VSD	ISD=3A, VGS=0V	-	-	1.2	V
Reverse Recovery Time	Trr	ISD=3A, di/dt=100A/μS	-	400	-	ns
Reverse Recovery Charge	Qrr	ISD=3A, di/dt=100A/μS	-	1.6	-	μC

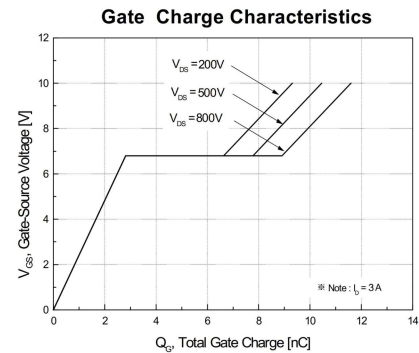
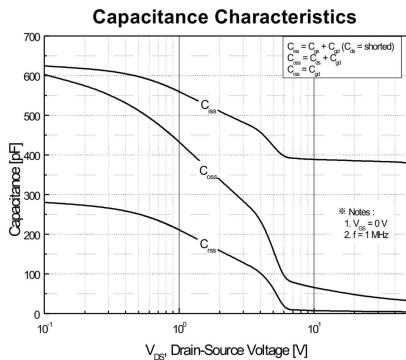
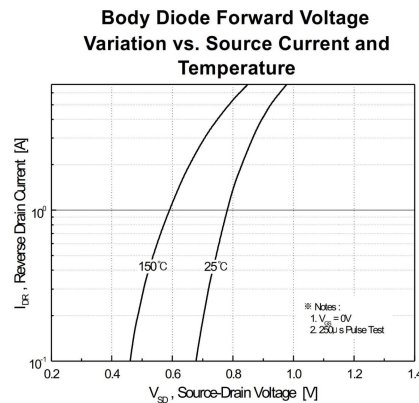
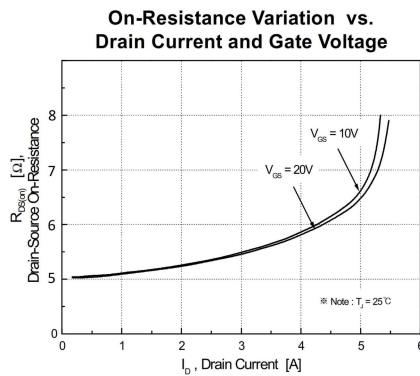
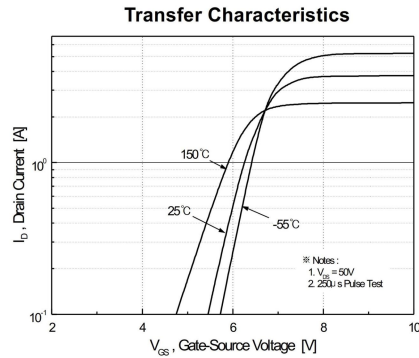
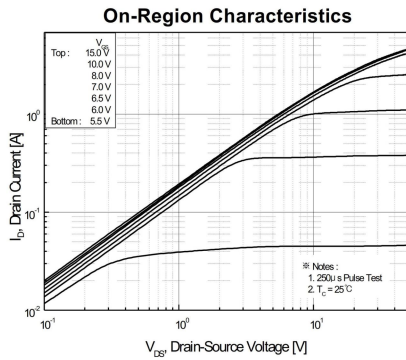
### Thermal data

Parameter	Symbol	Value	Unit
Thermal resistance junction max(TO-247)	Rthj-case	0.46	°C/W
Thermal resistance junction max(TO-252)	Rthj-case	2.5	°C/W

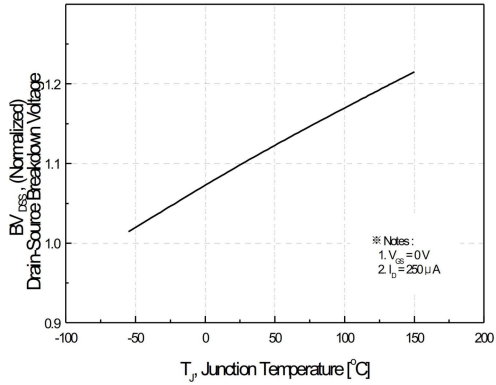
### Order codes

Partnumber	Marking	Package
MS3N100HGC0	MS3N100HGC0	TO-247
MS3N100HGD0	MS3N100HGD0	TO-252
MS3N100HGT1	MS3N100HGT1	TO-220F
MS3N100HGD1	MS3N100HGD1	TO-251

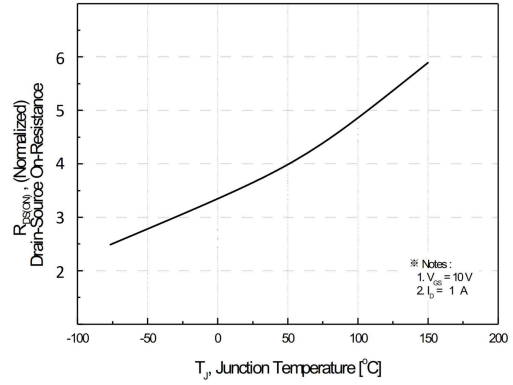
### Electrical characteristics (curves)



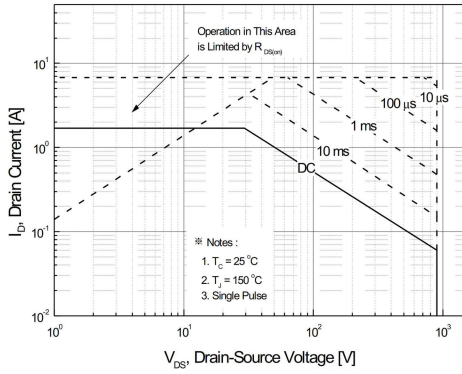
**Breakdown Voltage Variation vs. Temperature**



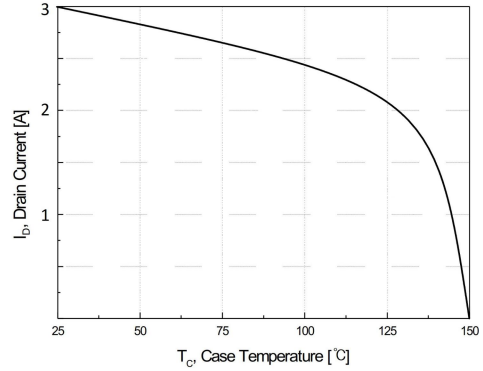
**On-Resistance Variation vs. Temperature**



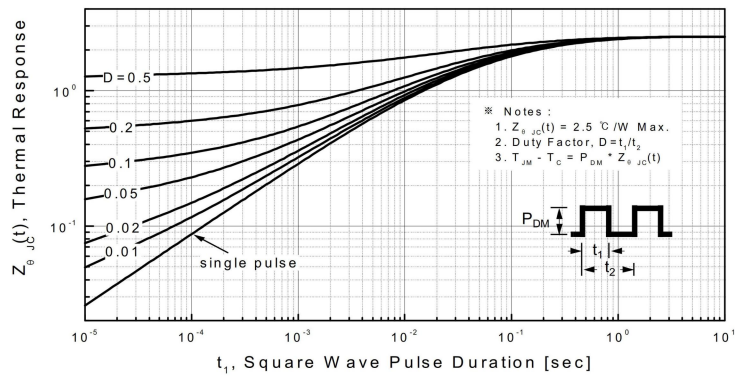
**Maximum Safe Operating Area**



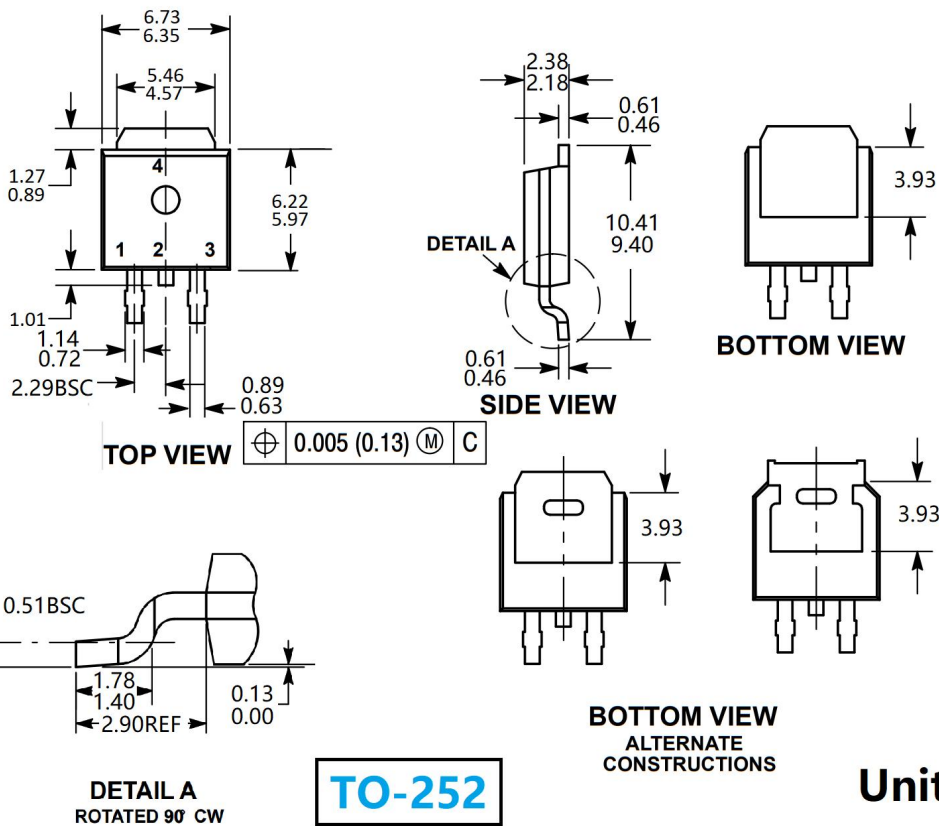
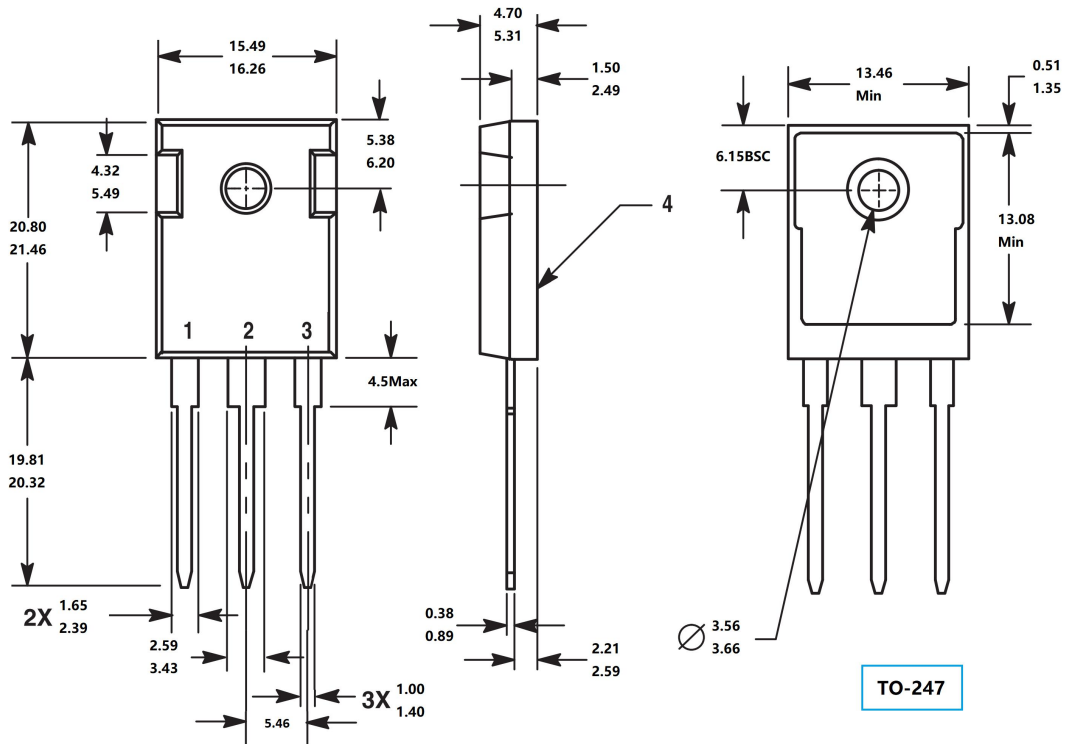
**Maximum Drain Current vs. Case Temperature**

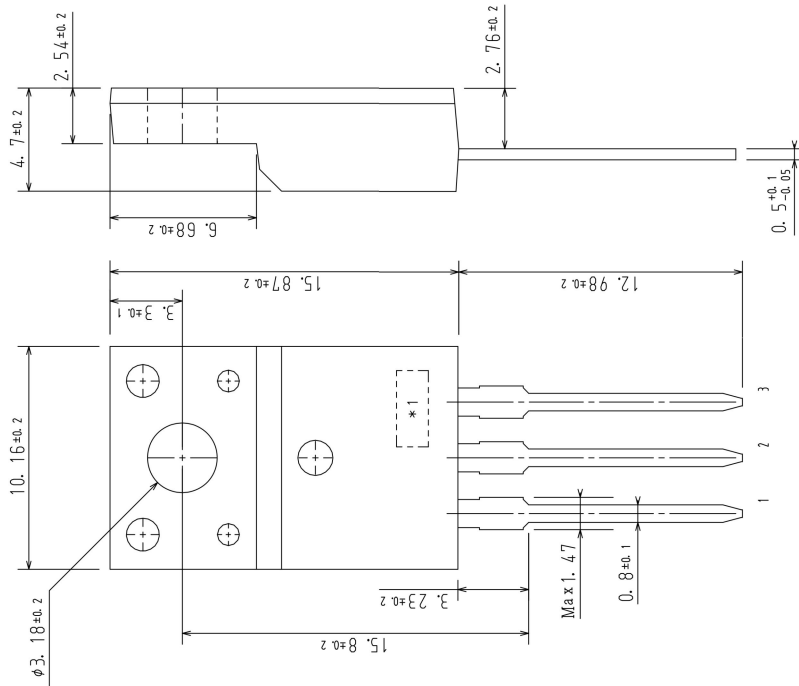


**Transient Thermal Response Curve**



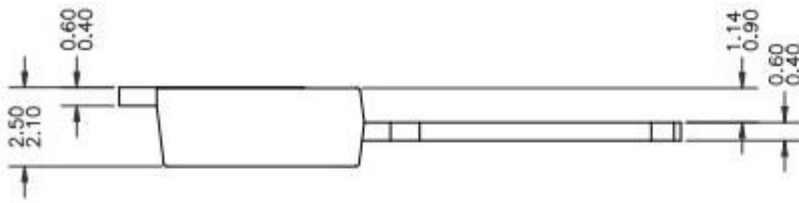
**Package outline dimension**



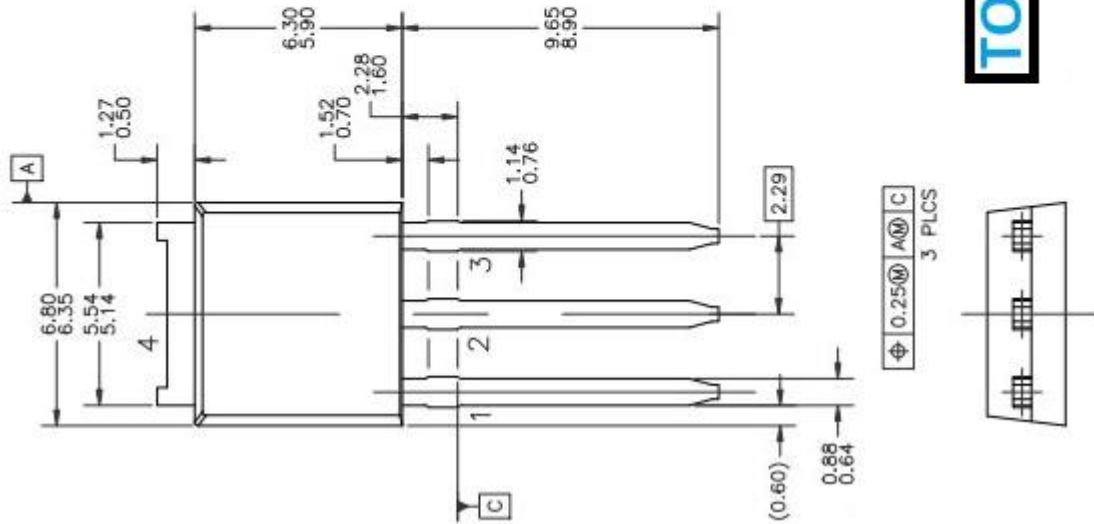


Uint: mm

**TO-220F**



**TO-251**



## X-ON Electronics

Largest Supplier of Electrical and Electronic Components

*Click to view similar products for [MOSFET](#) category:*

*Click to view products by [MASPOWER](#) manufacturer:*

Other Similar products are found below :

[IRFD120](#) [IRFY240C](#) [JANTX2N5237](#) [BUK455-60A/B](#) [MIC4420CM-TR](#) [VN1206L](#) [NDP4060](#) [SI4482DY](#) [IPS70R2K0CEAKMA1](#)  
[SQD23N06-31L-GE3](#) [TK16J60W,S1VQ\(O](#) [2SK2614\(TE16L1,Q\)](#) [DMN1017UCP3-7](#) [EFC2J004NUZTDG](#) [DMN1053UCP4-7](#) [SQJ469EP-](#)  
[T1-GE3](#) [NTE2384](#) [DMC2700UDMQ-7](#) [DMN2080UCB4-7](#) [DMN61D9UWQ-13](#) [US6M2GTR](#) [DMN31D5UDJ-7](#) [DMP22D4UFO-7B](#)  
[DMN1006UCA6-7](#) [DMN16M9UCA6-7](#) [STF5N65M6](#) [IRF40H233XTMA1](#) [STU5N65M6](#) [DMN6022SSD-13](#) [DMN13M9UCA6-7](#)  
[DMTH10H4M6SPS-13](#) [DMN2990UFB-7B](#) [IPB80P04P405ATMA2](#) [2N7002W-G](#) [MCAC30N06Y-TP](#) [MCQ7328-TP](#) [NTMC083NP10M5L](#)  
[NVMFS2D3P04M8LT1G](#) [BXP7N65D](#) [BXP4N65F](#) [AOL1454G](#) [WMJ80N60C4](#) [BXP2N20L](#) [BXP2N65D](#) [BXT1150N10J](#) [BXT1700P06M](#)  
[TSM60NB380CP](#) [ROG](#) [RQ7L055BGTCR](#) [DMNH15H110SK3-13](#) [SLF10N65ABV2](#)