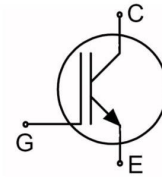


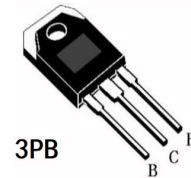
Features

- High Gate Charge
- Trench FS Technology
- Low Saturation Voltage:
VCE(sat) = 1.5V @ IC = 30 A
- RoHS Compliant



Applications

- General Purpose inverters
- ups



Absolute Maximum Ratings

Parameter		Symbol	Value	Unit
Collector to Emitter Voltage		V _{CEs}	1200	V
Gate to Emitter Voltage		V _{GES}	±20	
Collector Current	T _C =25°C	I _C	60	A
	T _C =100°C		30	
Pulsed Collector Current TC=25°C		I _{CM}	120	
Maximum Power Dissipation TC=25°C		P _D	342	W
Operating Junction Temperature		T _J	-55 to 150	°C
Storage Temperature Range		T _{stg}	-55 to 175	
Maximum Lead Temp. for soldering Purposes, 1/8" from case for 5 seconds		T _L	300	

Thermal Characteristics

Parameter	Symbol	Typ	Max	Unit
Thermal Resistance, Junction to Case	R _{θJC}		0.439	°C/W
Thermal Resistance, Junction to Ambient	R _{θJA}		31.87	

Package Marking and Ordering Information

Device Marking	Device	Package	MOQ
MSG30D120FLB	MSG30D120FLB	TO-3PB	

Electrical Characteristics of the IGBT $T_C = 25^\circ\text{C}$ unless otherwise noted

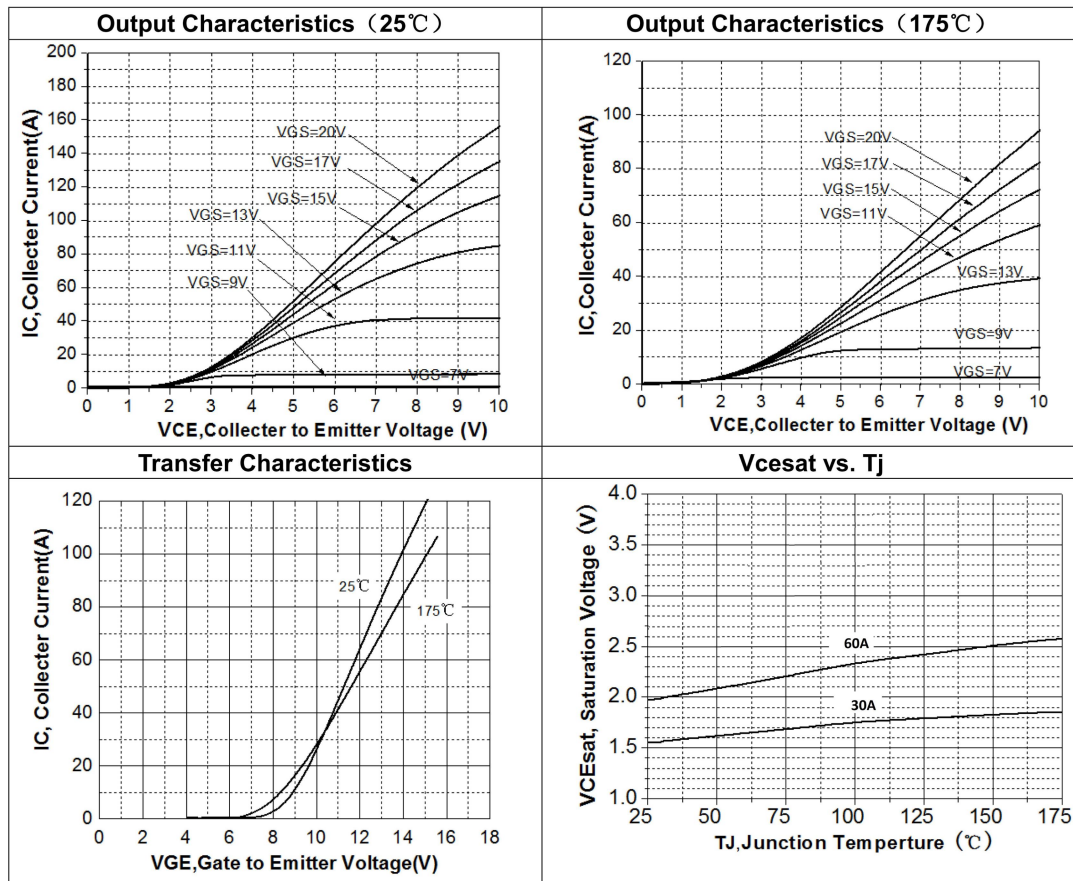
Parameter	Symbol	Test Conditions	Min	Type	Max	Unit
On/off Characteristics						
Collector to Emitter Breakdown Voltage	BV_{CE}	$V_{GE} = 0V, I_C = 250\mu A$	1200	-	-	V
Break down Voltage Temperature Coefficient	$\frac{\Delta BV_{CES}}{\Delta T_J}$	$I_C = 0.5mA, \text{referenced}$	-	0.6	-	$V/^\circ C$
Zero Gate Voltage Collector Current	I_{CES}	$V_{CE} = 1200V, V_{GE} = 0V, T_C = 25^\circ C$	-	-	0.2	mA
G-E Threshold Voltage	$V_{GE(th)}$	$I_C = 250\mu A, V_{CE} = V_{GE}$	4.5		6.5	V
Collector to Emitter Saturation Voltage	$V_{CE(sat)}$	$I_C = 30A, V_{GE} = 15V$	-	1.5	2.3	
Collector Cut-Off Current	I_{CES}	$V_{CE} = V_{CES}, V_{GE} = 0$	-	-	200	nA
G-E Leakage Current	I_{GES}	$V_{GE} = V_{GES}, V_{CE} = 0V$	-	-	-200	nA
Dynamic Characteristics						
Input Capacitance	C_{ies}	$V_{CE} = 25V, V_{GE} = 0V$ $f = 1MHz$	-	3086	-	pF
Output Capacitance	C_{oes}		-	126	-	
Reverse Transfer Capacitance	C_{res}		-	42.2	-	
Switching Characteristics						
Turn-On Delay Time	$t_{d(on)}$	$V_{CC} = 600V, I_C = 30A, R_G = 10\Omega, V_{GE} = 15V,$ Parasitic ductance = 75nH, $T_C = 25^\circ C$	-	32	-	nS
Rise Tim	t_r		-	69	-	
Turn-Off Delay Tim	$t_{d(off)}$		-	121	-	
Fall Time	t_f		-	151	-	
Turn-on switching energy	E_{on}	$V_{CC} = 600V, I_C = 30A, R_G = 10\Omega, V_{GE} = 15V,$ Parasitic ductance = 75nH, $T_C = 25^\circ C$		1.06		mJ
Turn-off switching energy	E_{off}			1.20		
Total switching energy	E_{tot}			2.26		
Turn-On Delay Time	$t_{d(on)}$	$V_{CC} = 600V, I_C = 30A, R_G = 10\Omega, V_{GE} = 15V,$ Parasitic ductance = 75nH, $T_C = 25^\circ C$	-	29	-	nS
Rise Tim	t_r		-	71	-	
Turn-Off Delay Tim	$t_{d(off)}$		-	164	-	
Fall Time	t_f		-	335	-	
Turn-on switching energy	E_{on}	$V_{CC} = 600V, I_C = 30A, R_G = 10\Omega, V_{GE} = 15V,$ Parasitic ductance = 75nH, $T_C = 25^\circ C$		1.24		mJ
Turn-off switching energy	E_{off}			2.19		
Total switching energy	E_{tot}			3.43		
Total Gate Charge	Q_g	$V_{CE} = 600V, I_C = 30A,$	-	95		nC
Gate to Emitter Charge	Q_{ge}	$V_{GE} = 15V$	-	31		

Gate to Collector Charge	Qgc	-	34.7		
Gate resistance	Rg	F=1MHz, Open collector	2.5		Ω
Short Current	Isc	V _{GE} =15V, V _{ce} =600V tsc<10us	154		A

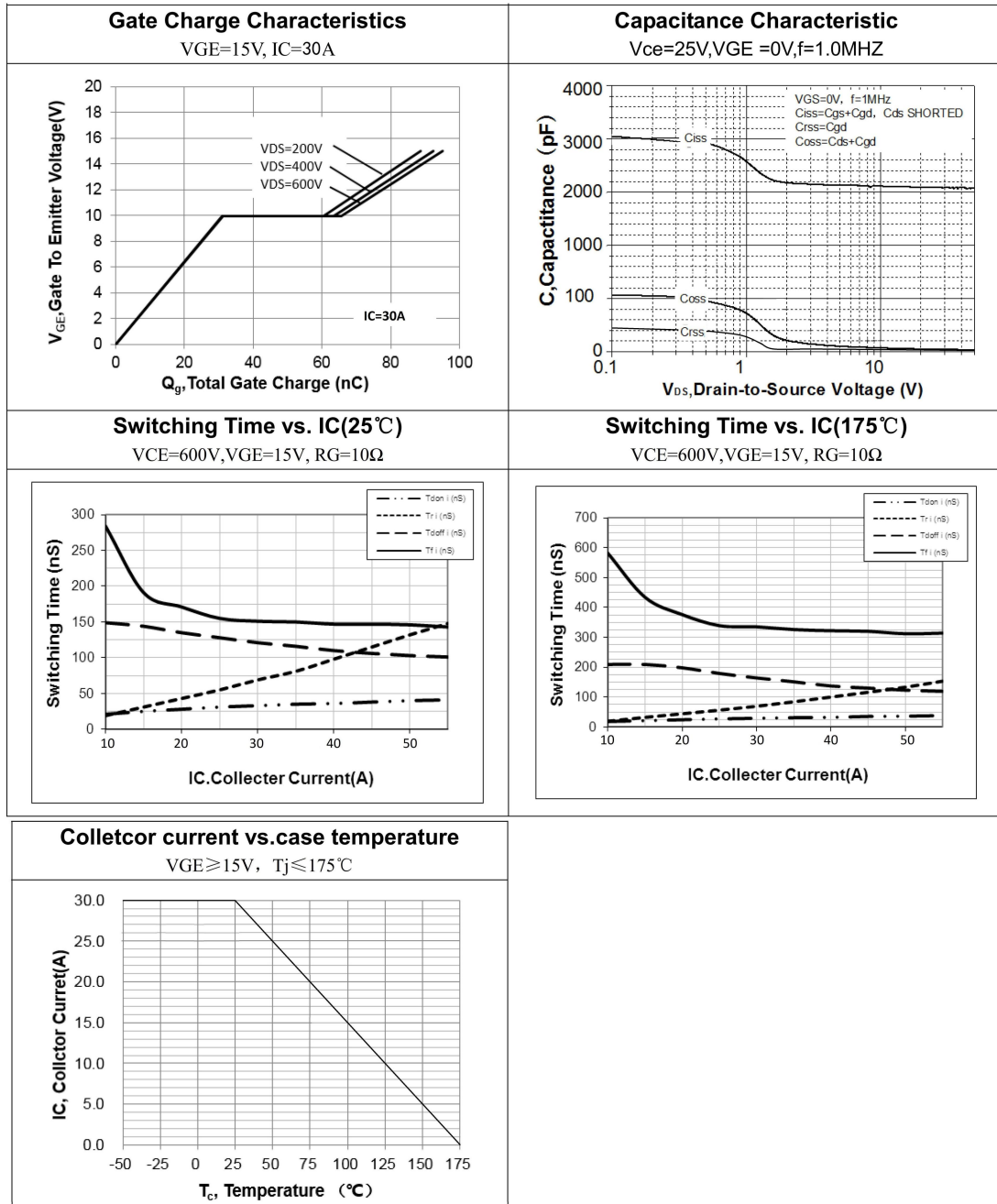
Notes:

- 1: Pulse width limited by maximum junction temperature
- 2: Pulse Test: Pulse Width ≤300μs, Duty Cycle ≤2%
- 3: Essentially independent of operating temperature

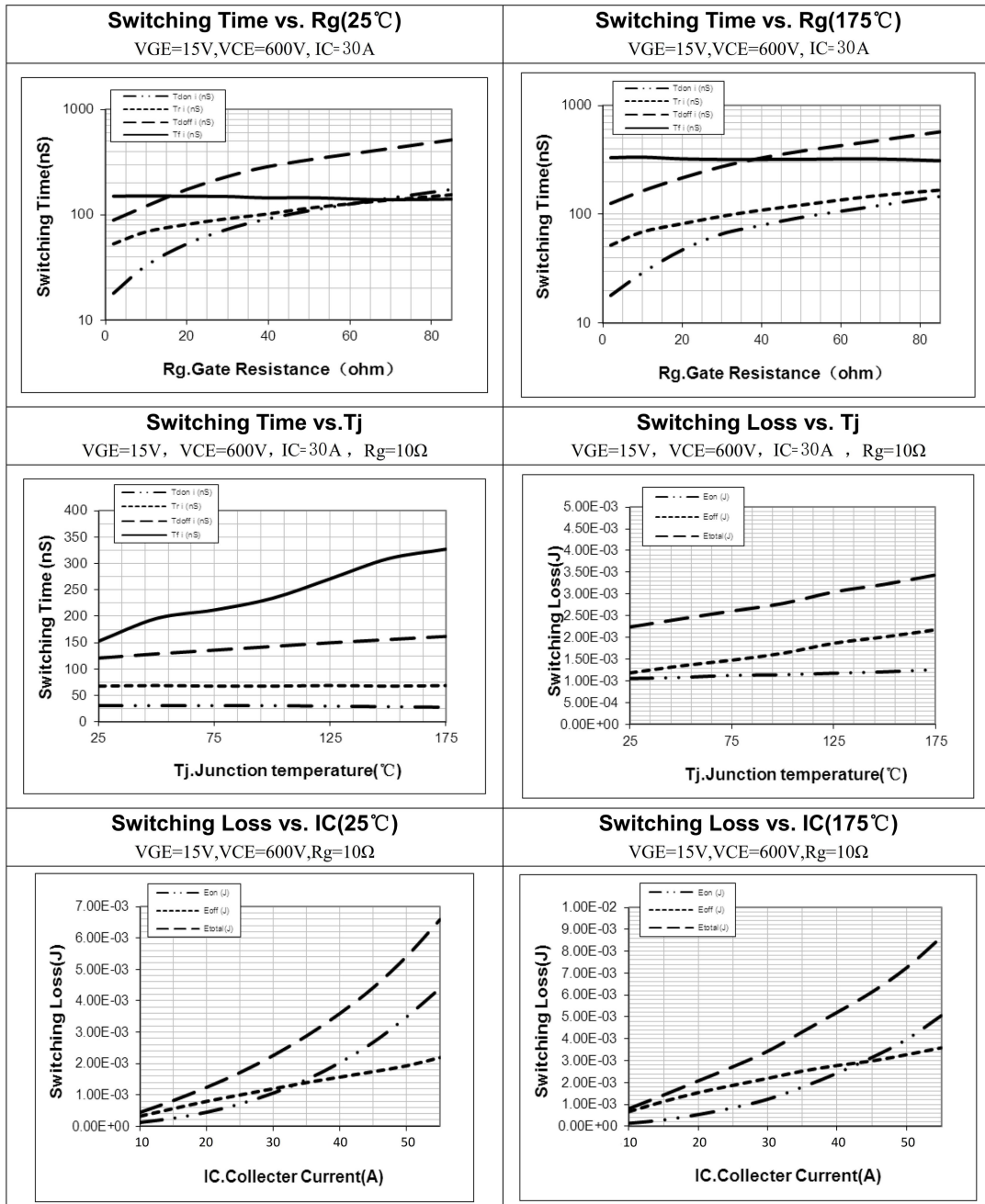
Typical Performance Characteristics



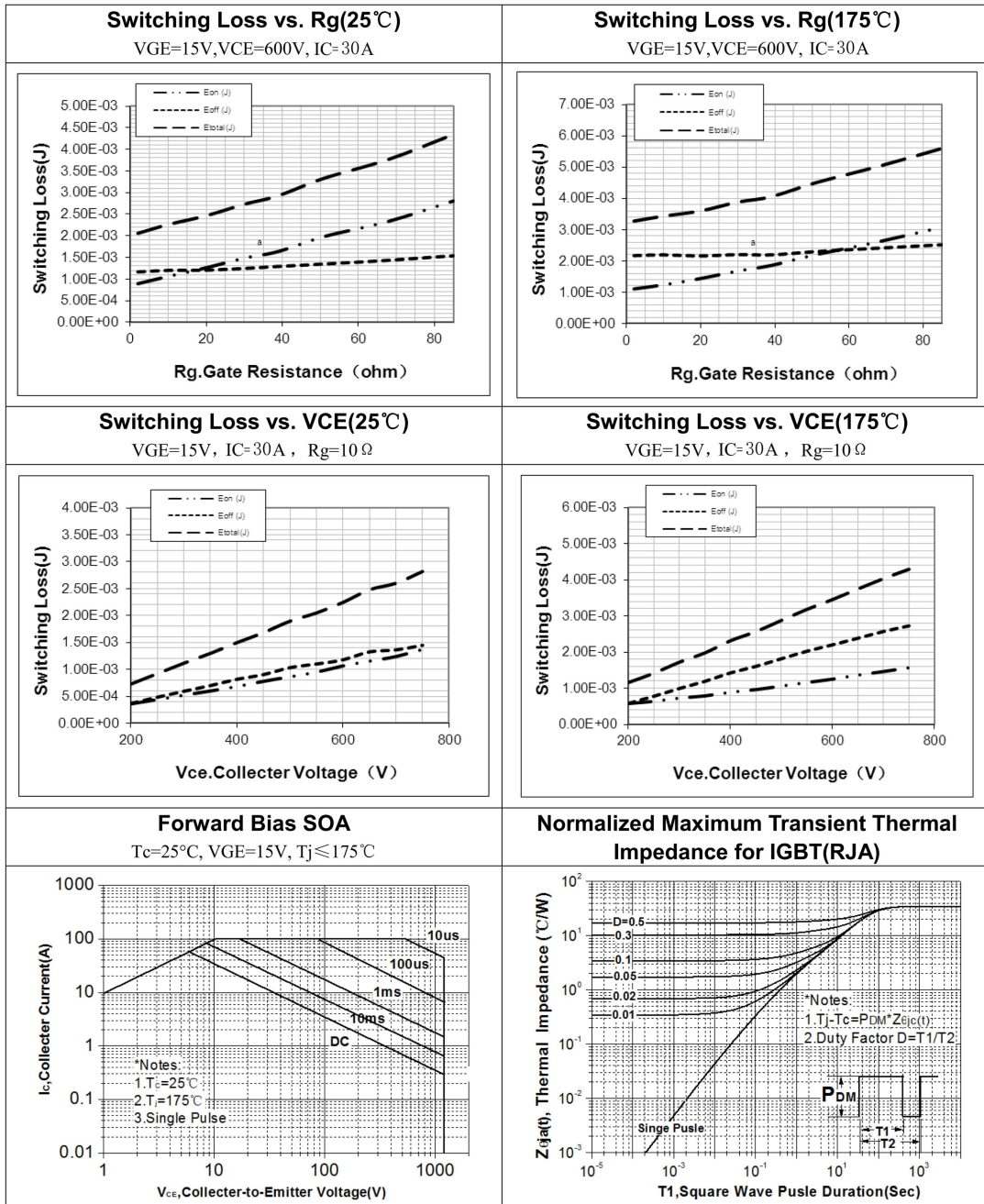
Typical Performance Characteristics



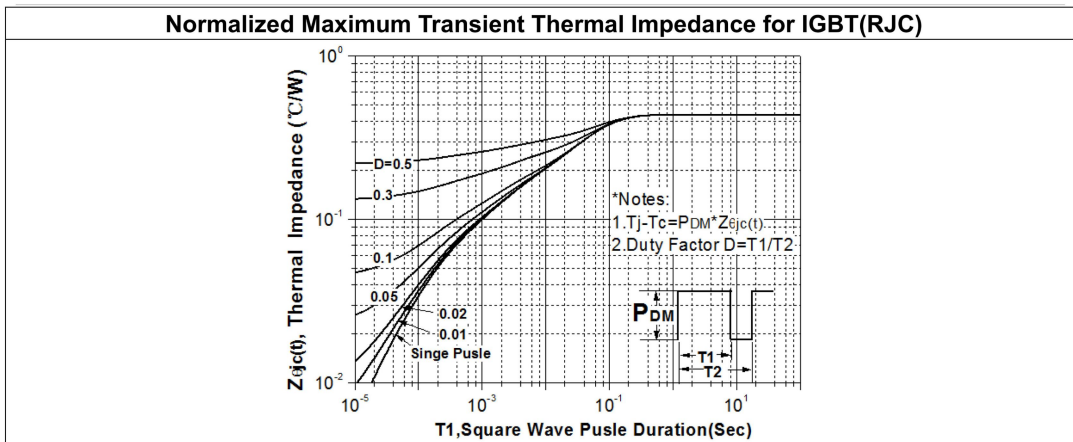
Typical Performance Characteristics



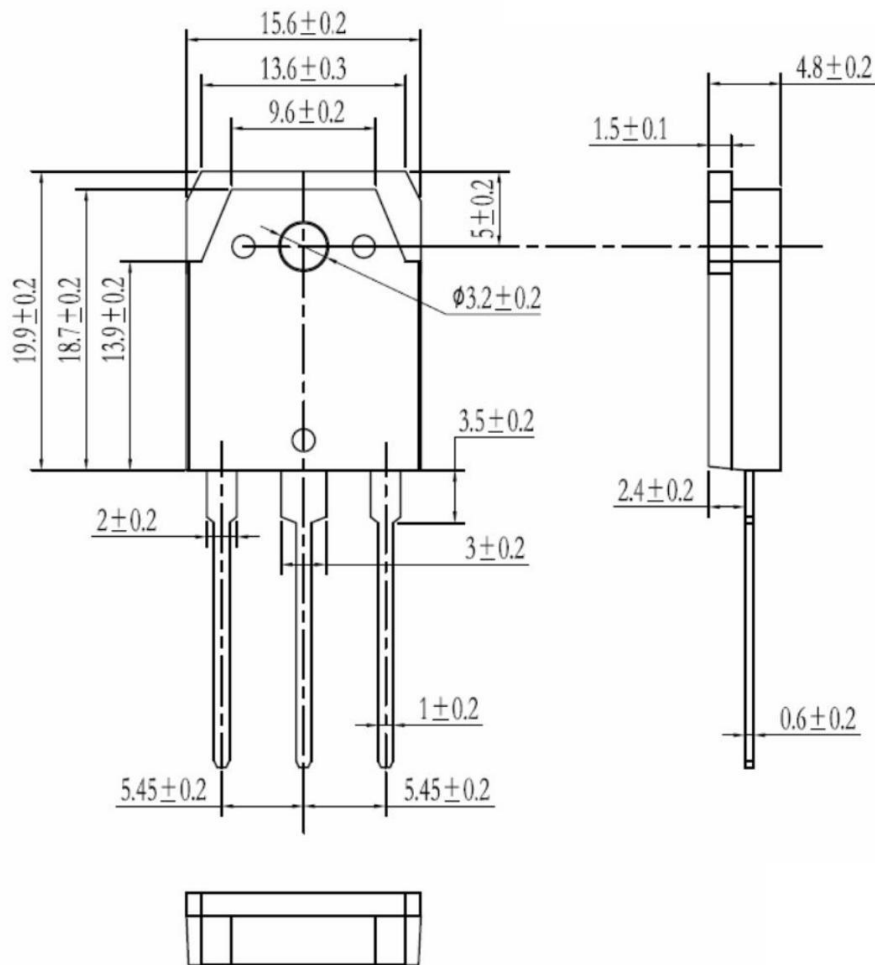
Typical Performance Characteristics



Typical Performance Characteristics



Package outline dimension



X-ON Electronics

Largest Supplier of Electrical and Electronic Components

Click to view similar products for [MASPOWER](#) manufacturer:

Other Similar products are found below :

[EST100BN120SN](#) [EST100BN60SN](#) [EST60BN120SN](#) [ESTF100SS60S](#) [ESTF15SS120C](#) [ESTF15SS135UC](#) [ESTF15SS60SC](#) [ESTF25D20SB](#)
[ESTF30S120U](#) [ESTF30SS60SC](#) [ESTF45D60U](#) [ESTF60SS120US](#) [ESTF60SS60US](#) [ESTF75D60U](#) [ESTF80D22U](#) [ESTF8SS120C](#)
[ESTF8SS195UP](#) [MS100N20HGC0](#) [MS100N20IDC0](#) [MS10N100HGC0](#) [MS10N100HGT1](#) [MS10N120HGC0](#) [MS10N40HGT0](#) [MS10N60FT](#)
[MS120N10FT](#) [MS120N15FB](#) [MS120N15FE](#) [MS12N100FC](#) [MS12N100FS](#) [MS12N100FT](#) [MS12N120HGC0](#) [MS12N120HJC0](#)
[MS13N20HGD0](#) [MS140N30HGB3](#) [MS140N30HGC0](#) [MS15N100HGC0](#) [MS15N100HGT1](#) [MS15N120HGC0](#) [MS170N15IDC0](#)
[MS170N25HGF4](#) [MS170N65HGF4](#) [MS18N100HGC0](#) [MS18N20FT](#) [MS20N50FS](#) [MS30N100HGC0](#) [MS33N10FT](#) [MS33N20HGC0](#)
[MS38N65FCC](#) [MS3N06FF](#) [MS3N100HGD0](#)