

# HTT70

---

For all variants of the HTT70

**Hardware Manual**

Revision 1.1



# Contents

- HTT70 Technical Specifications ..... 3
  - Available Headers ..... 3
  - Dimensional Drawings ..... 4
- Characteristics..... 6
  - Optical ..... 6
  - Power ..... 6
  - Environmental..... 6
- Options..... 7
  - Power Options ..... 7
- Recommended Accessories ..... 8
  - HDMI Cable ..... 8
  - USB Cable ..... 8
  - Power Adaptor ..... 8
- Support ..... 8
- Contact..... 8

## Revision History

Revision	Date	Description	Author
1.1	February 22, 2018	Added -TPC variant drawing	Divino
1.0	November 6, 2017	First Release	Divino

## HTT70 Technical Specifications

The HTT70 is a 7.0" TFT display with an HDMI interface. The 800x480 resolution offers crisp images, and video feedback, with 24-bit Full colour capabilities. The HTT can be configured with resistive, capacitive, or non-touch panels, making this display suitable for any application.

### Available Headers

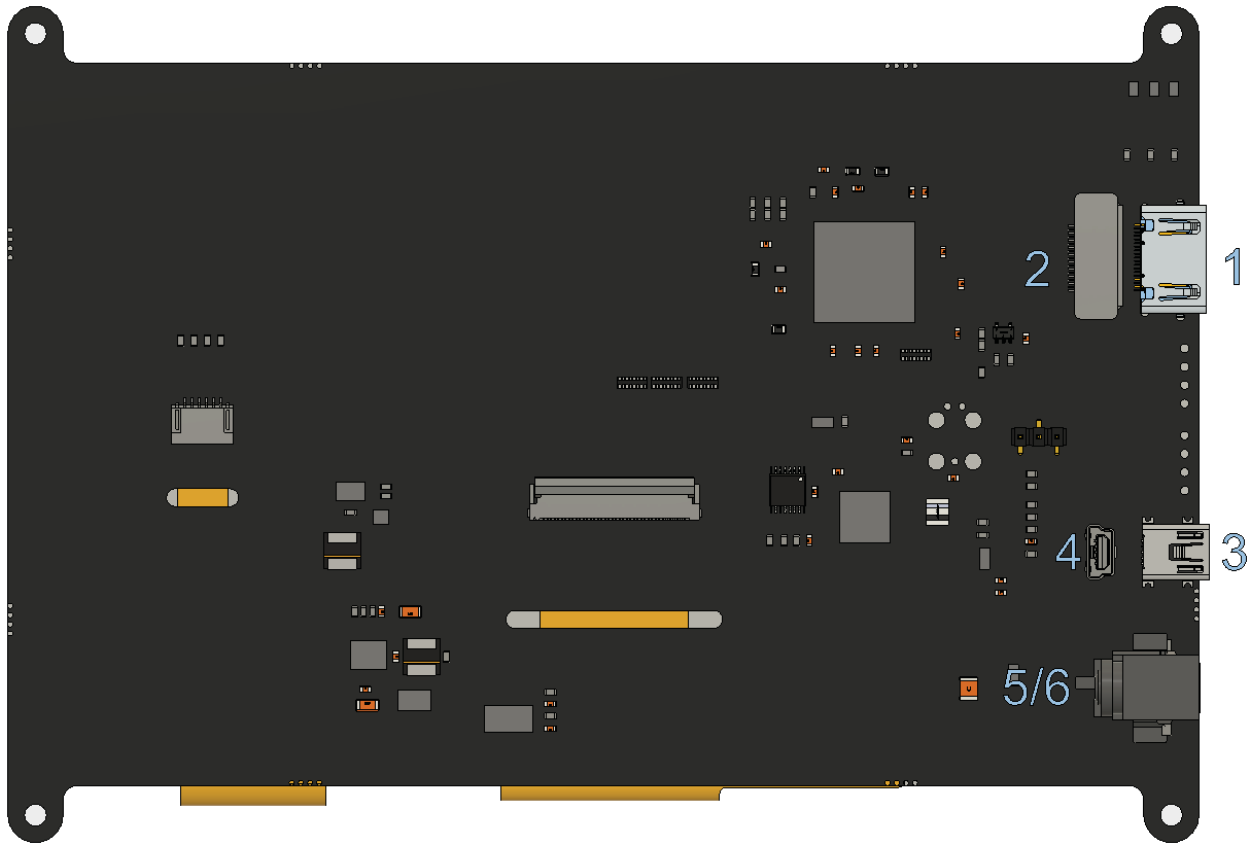


Figure 1: HTT70A Headers

Table 1: HTT70A Headers and Mates

#	Header	Standard Mate	Population
1	HDMI Port, Horizontal, Type A Standard	Type A Standard HDMI Cable	-H5
2	HDMI Port, Vertical, Type A Standard	Type A Standard HDMI Cable	-H6
3	Mini USB, Horizontal: Touch & Power	Mini-B USB Cable	-H5
4	Mini USB, Vertical: Touch & Power	Mini-B USB Cable	-H6
5	Barrel Jack: 2.1mm Center Positive	Power Adaptor	-H6
6	External Power, 2-1445057-2	Micro MATE-N-LOCK 1445022-2	-VPT model

## Dimensional Drawings

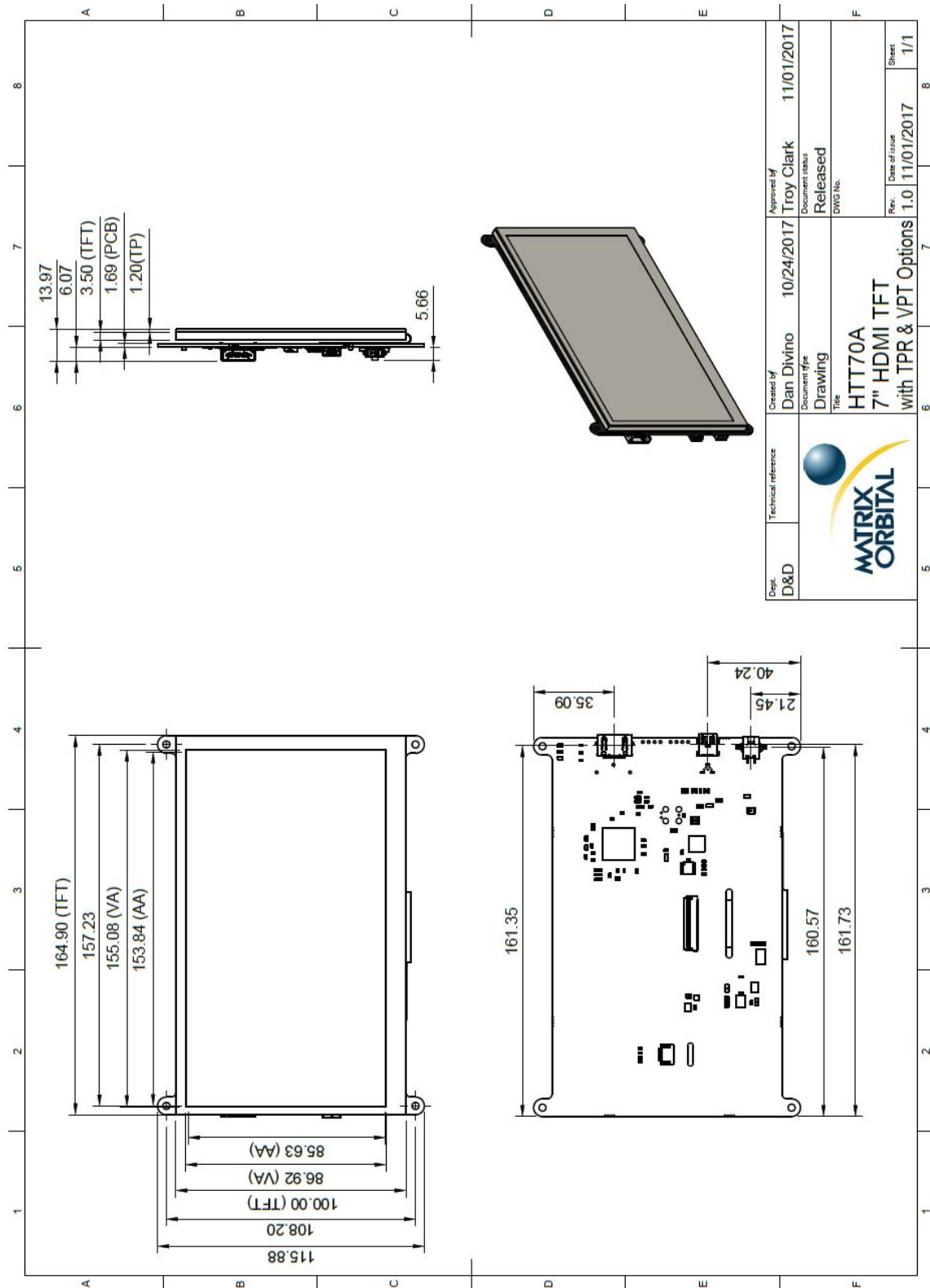


Figure 2: Resistive Touch Panel HTT70A Dimensional Drawing

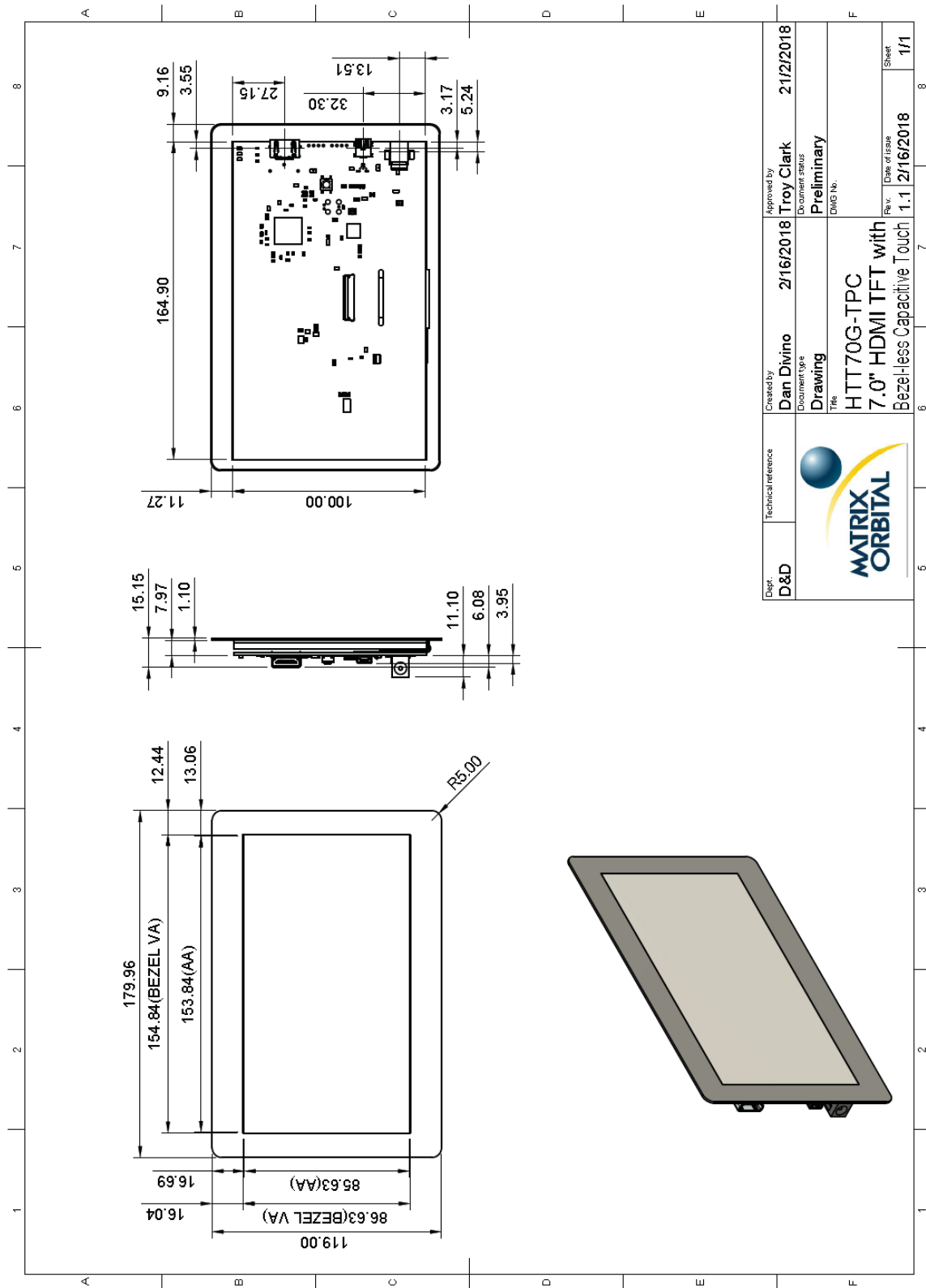


Figure 3: Bezel-less Capacitive Touch Panel HTT70G Dimensional Drawing

# Characteristics

## Optical

Table 2: HTT70 Optical Characteristics

Module Size	164.90 x 115.88 x 12.77	mm
Viewing Area	157.00 x 89.10	mm
Active Area	153.84 x 85.63	mm
Pixel Pattern	800 x 480 x 24bit RGB	
Pixel Pitch	0.1923 x 0.1784	mm
Luminance	520	cd/m <sup>2</sup>
Viewing Angle	70° Left, Right, Up 60° Down	
Contrast Ratio	500:1	
Backlight Half-Life	20,000 hours	

## Power

Table 3: HTT70 Typical Power Characteristics

Parameter	Min	Typ	Max	Unit	Remarks
Logic	-	375	-	mA	Backlight Off
Backlight	0	-	465	mA	Off, Mid, Max

Table 4: HTT70 Maximum Power Characteristics

Parameter	Min	Typ	Max	Unit	Remarks
Supply Voltage	4.75	5.0	5.25	V	Standard Voltage (V5)
	5.0	12.0	35.0	V	Wide Voltage (VPT)

## Environmental

Table 5: HTT70 Environmental Characteristics

Operating Temperature	0°C to +70°C
Storage Temperature	-30°C to +80°C
Operating Relative Humidity*	90% (T < 60°C)

\*Note: No condensation at any temperature

## Options

Table 6: Part Numbering Scheme

HTT	70	A	-TPR	-BLM	-B0	-H5	-CH	-V5
1	2	3	4	5	6	7	8	9

Table 7: Display Options

#	Designator	Options
1	Product Type	HTT: Graphic TFT Display
2	Display Size	70: 7.0"
3	Screen Type	A: A Type G: G Type
4	Touch	-TPN: No touch panel -TPR: Resistive touch panel -TPC: Capacitive touch panel -CTB: Bezel-less capacitive touch panel
5	Backlight	-BLM: 300 Nit < Brightness < 600 Nit -BLH: 600 Nit < Brightness < 1000 Nit -BLD: Brightness > 1000 Nit
6	Bezel	-B0: None
7	Headers	-H5: Horizontal Connectors -H6: Vertical Connectors
8	Protocol	-CH: HDMI interface
9	Voltage	-V5: 5.0V Input Voltage -VPT: Regulated 5V - 35V Input Voltage

## Power Options

Table 8: Powering Options

Option	Voltage Input
V5	USB Header
VPT	Barrel Jack/External Power Header



## Recommended Accessories

### HDMI Cable



Figure 4: HDMI Cable

**Part Number:**  
HDMI3FT or HDMI6FT

**Description:**  
3ft (1m) or 6ft (2m) HDMI Cable

### USB Cable



Figure 5: EXTMUSB3FT

**Part Number:**  
EXTMUSB3FT

**Description:**  
3ft (1m) Mini-B USB Cable

### Power Adaptor



Figure 6: PWR-ACDC-5V2A

**Part Number:**  
PWR-ACDC-5V2A

**Description:**  
9ft (2.7m) AC to DC power adapter with 2.1mm center positive barrel jack.

Input Voltage: 100-240V AC  
Output Voltage: 5V DC @ 2A

AC Plugs Included: North American (NEMA), Europlug (Type C), UK (Type G), Australia/China/New Zealand/Argentina (Type I)

## Support

Phone: 403.229.2737

Email: [support@matrixorbital.ca](mailto:support@matrixorbital.ca)

Manuals and Drivers: <http://www.matrixorbital.ca>

Forums: <http://www.lcdforums.com/forums>

## Contact

### Sales

Phone: 403.229.2737

Email: [sales@matrixorbital.ca](mailto:sales@matrixorbital.ca)

### Support

Phone: 403.229.2737

Email: [support@matrixorbital.ca](mailto:support@matrixorbital.ca)

### Online

Purchasing: [www.matrixorbital.com](http://www.matrixorbital.com)

Support: [www.matrixorbital.ca](http://www.matrixorbital.ca)

## X-ON Electronics

Largest Supplier of Electrical and Electronic Components

*Click to view similar products for [TFT Displays & Accessories](#) category:*

*Click to view products by [Matrix Orbital](#) manufacturer:*

Other Similar products are found below :

[F3ET2-005-150](#) [HDA430T-3G1H](#) [NB7W-KBA04](#) [NB-ATT01](#) [NB5Q-ATT01](#) [NB5Q-KBA04](#) [NB-CN001](#) [OAI-80038AA-2008-A](#) [315-U004B15300](#) [UMSH-8596MD-34T \(REV D\)](#) [TCG121WXLRXVNNANX35](#) [EIC-LCD-1080P](#) [T-55619GD065J-LW-ABN](#)  
[TCG104SVLPEANN-AN30](#) [NL6448BC33-70](#) [NL6448BC20-30D](#) [NL10276BC16-06](#) [NL192108AC10-01D](#) [NL12880BC20-05BD](#)  
[NL8060BC26-35BA](#) [NL8060BC31-50F](#) [TM070DDHG03-40](#) [PTPW16-070WV1S02](#) [PTPW17-070WV1S02](#) [PTPW16-084SV1S02](#)  
[MTD0300ECP06DF-1](#) [DEM 320240T VMX-PW-N \(A-TOUCH\)](#) [DEM 480128B TMH-PW-N \(A-TOUCH\)](#) [DEM 480272P VMX-PW-N \(C-TOUCH\)](#) [DEM 480272Q VMX-PW-N \(A-TOUCH\)](#) [DEM 480272Q VMX-PW-N \(C-TOUCH\)](#) [DEM 640480E TMH-PW-N \(A-TOUCH\)](#)  
[DEM 800480K1 TMH-PW-N \(A-TOUCH\)](#) [DEM 800480K1 TMH-PW-N \(C-TOUCH\)](#) [DEM 800480K2 TMH-PW-N \(A-TOUCH\)](#) [DEM 800480K3 TMH-PW-N \(C-TOUCH\)](#) [DEM 800480K4 TMH-PW-N \(A-TOUCH\)](#) [DEM 800480K4 TMH-PW-N \(C-TOUCH\)](#) [4DLCD-35480320-CTP-IPS](#) [4DLCD-35480320-IPS](#) [4DLCD-35480320-RTP-IPS](#) [4DLCD-50800480-CTP-IPS](#) [RFA6400E-AWH-DNG](#) [RFA6400E-AWH-MNN](#) [RFE430V-AZW-DNS](#) [RFF70VA2-1IW-DHS](#) [RFH700A8-AYH-MNN](#) [RFK101VF-1YH-LHG](#) [RFS390C-AIW-DNN](#) [RFS390C-AIW-DNS](#)