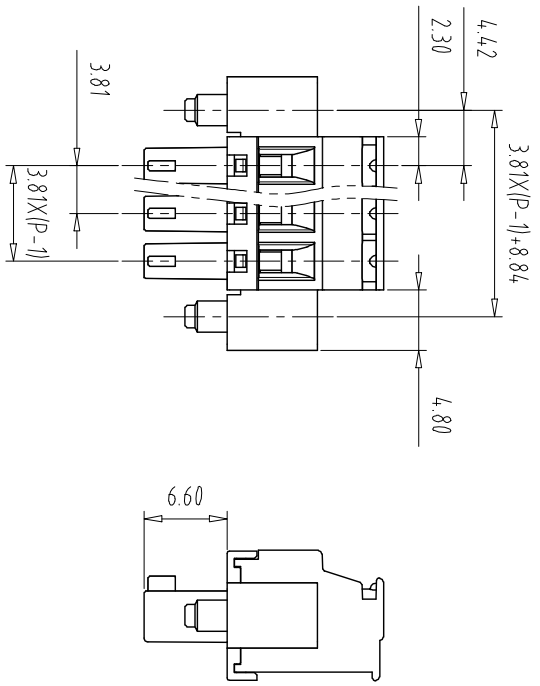
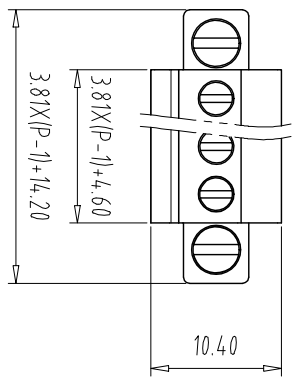


注：本板为禁止传输、复制、编辑文档，以及用其内容进行交流



REV	ECN NO.	CONTENT	CHK	DATE

NOTES:  
UL Standard

Use group	B	C	D
Rated Current	8A	/	8A
Rated Voltage	300V	/	300V

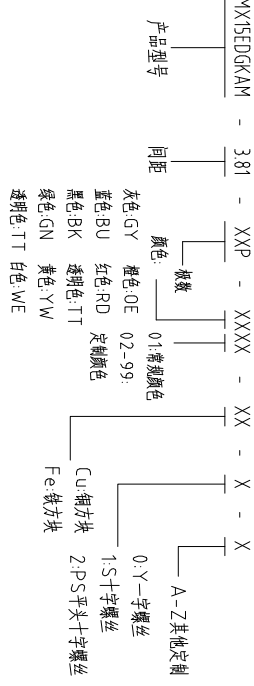
2. Wire range: 28~16AWG  
IEC Standard

Pollution Degree	3	2	2
Overvoltage Category	III	III	II
Rate Impulse Voltage(KV)	2.5KV	2.5KV	2.5KV
Rate Voltage(V)	160V	160V	320V
Rate Current(A)	8A	8A	8A

NOTES2:  
1.Housing: PA66 (UL94V-0)  
2.Cover: PA66 (UL94V-0)  
3.Clamp: Copper alloy (Ni Plated)  
4.Cage: Brass (Ni Plated)  
5.Screw1: Steel (M2,Zn Plated)  
6.Screw1: Steel (M2.5,Zn Plated)

NOTES3:  
1.Pitch: 3.81mm Poles: 02-24P  
2.Stripping length: 6-7mm  
3.Operating temperature: -40°C~+105°C  
4.RoHS Compliance

How to order  
MX15EDGKAM - 3.81 - XXP - XXXX - XX - X - X



Pitch	Range	In mm	Nominal Dimension	Range								
Over	6	Over	10	Over	30	Over	60	Over	100	Over	150	
TO	10	TO	24	TO	60	TO	100	TO	150			
±0.15	±0.20	±0.30	±0.30	±0.50	±0.70	±1.00	±1.30	±2°				

ITEM	NAME OF PART	NO. OF PART	Q'TY	MATERIAL	NOTE
DWG	CHK	DATE	SCALE	SHEET/OF	1/1
APP	DATE		1:1	A4	
CIXI MAIXU ELECTRONICS CO.,LTD				NAME	
东莞市迈旭电子有限公司					
MX15EDGKAM-3.81-XXP					

## X-ON Electronics

Largest Supplier of Electrical and Electronic Components

*Click to view similar products for [Pluggable Terminal Blocks](#) category:*

*Click to view products by [MAX](#) manufacturer:*

Other Similar products are found below :

[57.510.0053](#) [721-104/026-047](#) [721-204/026-045](#) [MC 1.5/ 6-ST-3.5 GY AU](#) [ET02015000J0G](#) [860505](#) [860516](#) [860810](#) [GBPACX-12](#)  
[93.731.4953.0](#) [PVP03-3,50](#) [PVS02-5,00](#) [1-1986160-3](#) [1377680000](#) [1531000000](#) [1546228-5](#) [ELFP03110](#) [ELFP10210](#) [ELFT07250](#)  
[ELVD12100](#) [ELVF09400](#) [ELXH071G0E](#) [1725220000](#) [1760336](#) [1855000000](#) [19346](#) [1946309](#) [1973592](#) [19892](#) [25.320.4053.1](#) [25.320.4553.9](#)  
[25.320.4753.1](#) [25.320.5453.1](#) [25.340.0353.1](#) [25.340.1053.1](#) [25.345.3553.0M001](#) [25.640.3553.1](#) [SH02-5,08](#) [SH06-3,81](#) [SH08-5,08](#) [SH08-](#)  
[5,08-K](#) [SH12-5,08](#) [SHS04-5,00](#) [30.303](#) [30.305](#) [30.306](#) [PHP09-5,08](#) [25.193.0453.0](#) [25.320.4653.1](#) [25.332.2453.1](#)