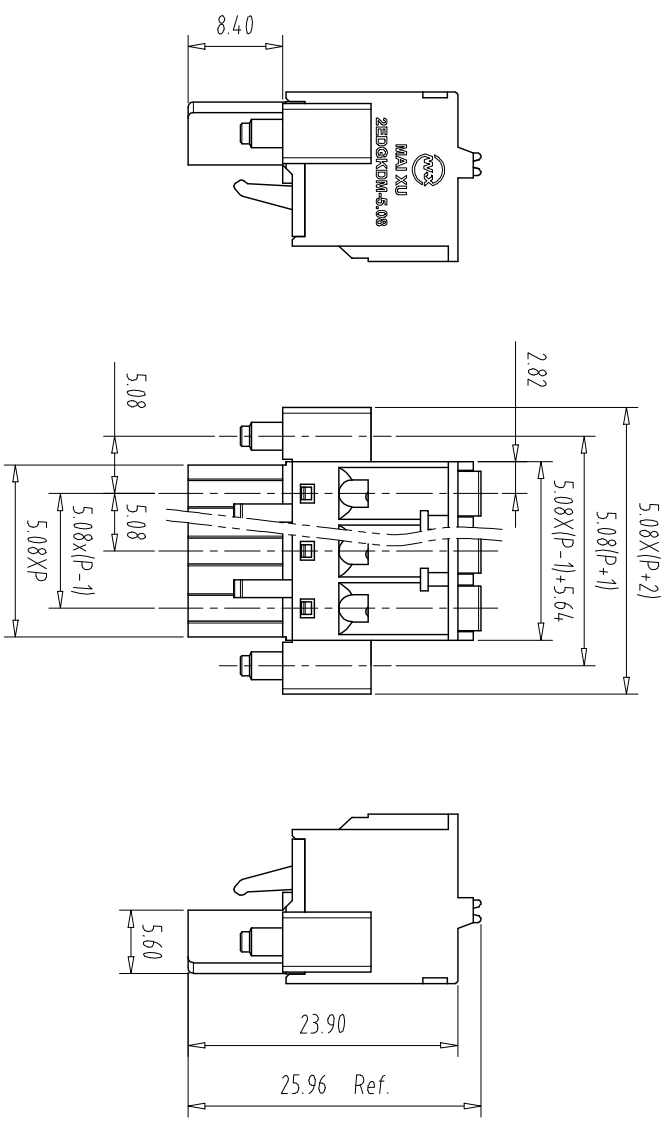
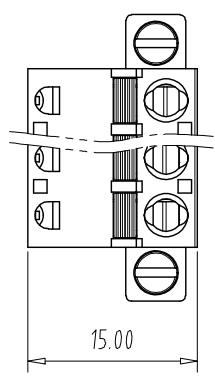


注：本板为禁止运输、复制、编辑文件，以及用其内容进行交流



| REV | ECN NO. | CONTENT | CHK | DATE |
|-----|---------|---------|-----|------|
| | | | | |

NOTES:
UL Standard

| 1. Use group | B | C | D |
|---------------|------|---|------|
| Rated Current | 10A | / | 10A |
| Rated Voltage | 300V | / | 300V |

2. Wire range: 24~12AWG
IEC Standard

| 1. Pollution Degree | 3 | 2 | 2 |
|--------------------------|-----|-------|----|
| Overvoltage Category | III | III | II |
| Rate Impulse Voltage(KV) | / | 4.0KV | / |
| Rate Voltage(V) | / | 320V | / |
| Rate Current(A) | / | 12A | / |

NOTES2:

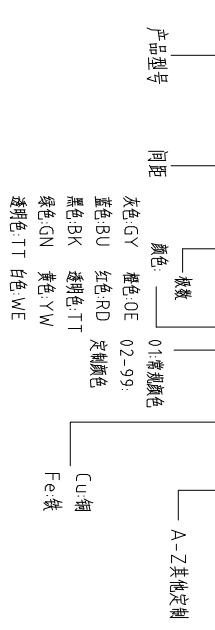
- 1.Housing: PA66 (UL94V-0)
- 2.Cover: PA66 (UL94V-0)
- 3.Button: POM
- 4.Conductor: Copper alloy (Ni Plated)
- 5.Spring: Stainless Steel
- 6.Screw: Steel (M2.5,Zn Plated)

NOTES3:

- 1.Pitch: 5.08mm Poles: 02-24P
- 2.Stripping length: 9-10mm
- 3.Operating temperature: -40°C~+105°C
- 4.RoHS Compliance

How to order

MX2EDGKDM - 508 - XXP - XXXX - XX - X



| Pitch Range In mm | Nominal Dimension Range | | | | | | — | 0.1/10 |
|-------------------|-------------------------|---------|---------|---------|---------|----------|-----|--------|
| | Over 6 | Over 10 | Over 24 | Over 30 | Over 60 | Over 100 | | |
| TO 6 | TO 10 | TO 24 | TO 30 | TO 60 | TO 100 | TO 150 | ∠ | |
| ±0.15 | ±0.20 | ±0.30 | ±0.30 | ±0.50 | ±0.70 | ±1.00 | ±2° | |

| ITEM | NAME OF PART | NO. OF PART | Q'TY | MATERIAL | NOTE |
|--------------------------------|--------------|-------------|--------------------|----------|------|
| DWG | CHK | DATE | SCALE | SHEET/OF | 1/1 |
| APP | DATE | SCALE | 1:1 | A4 | |
| CIXI MAIXU ELECTRONICS CO.,LTD | | | MX2EDGKDM-5.08-XXP | | |
| 慈溪市迈旭电子有限公司 | | | DWGNO. | | |

X-ON Electronics

Largest Supplier of Electrical and Electronic Components

Click to view similar products for [Pluggable Terminal Blocks](#) category:

Click to view products by [MAX](#) manufacturer:

Other Similar products are found below :

[57.510.0053](#) [721-104/026-047](#) [721-204/026-045](#) [MC 1.5/ 6-ST-3.5 GY AU](#) [ET02015000J0G](#) [860505](#) [860516](#) [860810](#) [GBPACX-12](#)
[93.731.4953.0](#) [PVP03-3,50](#) [PVS02-5,00](#) [1-1986160-3](#) [1377680000](#) [1531000000](#) [1546228-5](#) [ELFP03110](#) [ELFP10210](#) [ELFT07250](#)
[ELVD12100](#) [ELVF09400](#) [ELXH071G0E](#) [1725220000](#) [1760336](#) [1855000000](#) [19346](#) [1946309](#) [1973592](#) [19892](#) [25.320.4053.1](#) [25.320.4553.9](#)
[25.320.4753.1](#) [25.320.5453.1](#) [25.340.0353.1](#) [25.340.1053.1](#) [25.345.3553.0M001](#) [25.640.3553.1](#) [SH02-5,08](#) [SH06-3,81](#) [SH08-5,08](#) [SH08-](#)
[5,08-K](#) [SH12-5,08](#) [SHS04-5,00](#) [30.303](#) [30.305](#) [30.306](#) [PHP09-5,08](#) [25.193.0453.0](#) [25.320.4653.1](#) [25.332.2453.1](#)