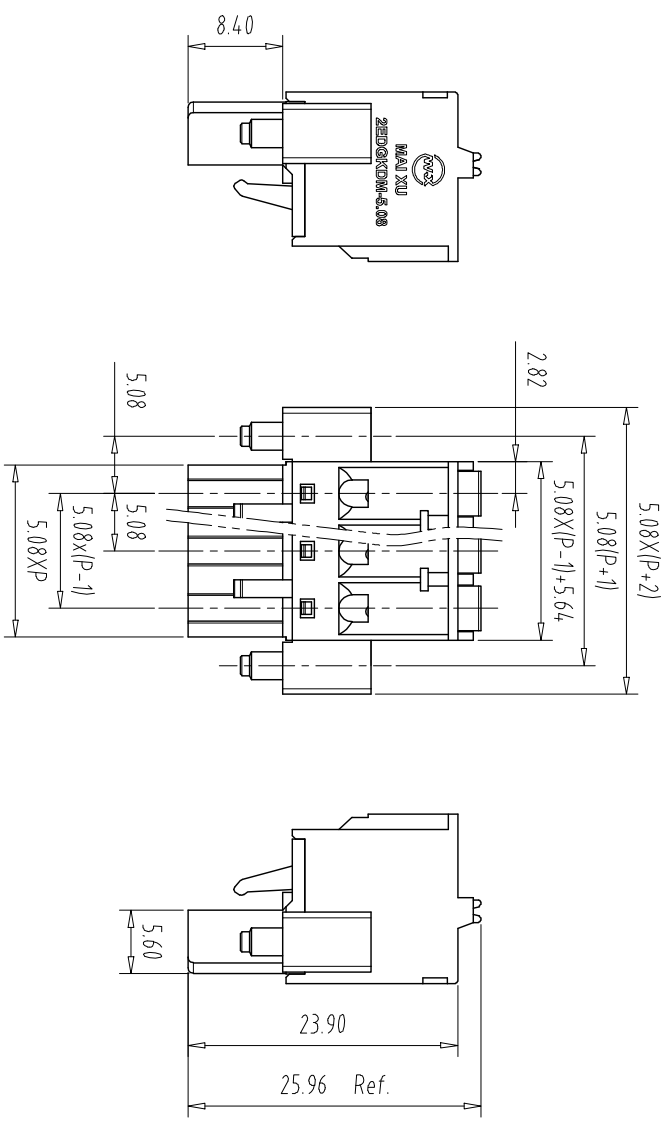
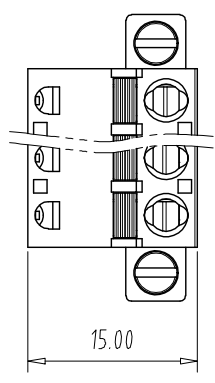


注：本板为禁止运输、复制、编辑文件，以及用其内容进行交流



| REV | ECN NO. | CONTENT | CHK | DATE |
|-----|---------|---------|-----|------|
|     |         |         |     |      |

NOTES:  
UL Standard

| 1. Use group  | B    | C | D    |
|---------------|------|---|------|
| Rated Current | 10A  | / | 10A  |
| Rated Voltage | 300V | / | 300V |

2. Wire range: 24~12AWG  
IEC Standard

| 1. Pollution Degree      | 3   | 2     | 2  |
|--------------------------|-----|-------|----|
| Overvoltage Category     | III | III   | II |
| Rate Impulse Voltage(KV) | /   | 4.0KV | /  |
| Rate Voltage(V)          | /   | 320V  | /  |
| Rate Current(A)          | /   | 12A   | /  |

NOTES2:

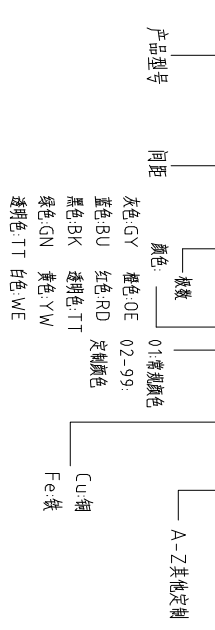
- 1.Housing: PA66 (UL94V-0)
- 2.Cover: PA66 (UL94V-0)
- 3.Button: POM
- 4.Conductor: Copper alloy (Ni Plated)
- 5.Spring: Stainless Steel
- 6.Screw: Steel (M2.5,Zn Plated)

NOTES3:

- 1.Pitch: 5.08mm Poles: 02-24P
- 2.Stripping length: 9-10mm
- 3.Operating temperature: -40°C~+105°C
- 4.RoHS Compliance

How to order

MX2EDGKDM - 508 - XXP - XXXX - XX - X



| Pitch | Range  | In mm   | Nominal Dimension | Range   |          |          |
|-------|--------|---------|-------------------|---------|----------|----------|
| mm    | Over 6 | Over 10 | Over 30           | Over 60 | Over 100 | Over 150 |
| TO    | TO 6   | TO 10   | TO 24             | TO 30   | TO 60    | TO 100   |
| ±0.15 | ±0.20  | ±0.30   | ±0.30             | ±0.50   | ±0.70    | ±1.00    |
|       |        |         |                   |         |          | ±1.30    |
|       |        |         |                   |         |          | ±2°      |

| ITEM   | NAME OF PART | NO. OF PART | Q'TY   | MATERIAL           | NOTE |
|--|--------------|-------------|--------|--------------------|------|
| DWG  | CHK          | DATE        | SCALE  | SHEET/OF           | 1/1  |
| APP  | DATE         |             | 1:1    | A4                 |      |
| CXI MAIXU ELECTRONICS CO.,LTD<br>慈溪市迈旭电子有限公司 |              |             | NAME   |                    |      |
|  |              |             |        | MX2EDGKDM-5.08-XXP |      |
|  |              |             | DWGNO. |                    |      |

## X-ON Electronics

Largest Supplier of Electrical and Electronic Components

*Click to view similar products for [Pluggable Terminal Blocks](#) category:*

*Click to view products by [MAX](#) manufacturer:*

Other Similar products are found below :

[57.510.0053](#) [721-104/026-047](#) [721-204/026-045](#) [MC 1.5/ 6-ST-3.5 GY AU](#) [ET02015000J0G](#) [860505](#) [860516](#) [860810](#) [GBPACX-12](#)  
[93.731.4953.0](#) [PVP03-3,50](#) [PVS02-5,00](#) [1-1986160-3](#) [1377680000](#) [1531000000](#) [1546228-5](#) [ELFP03110](#) [ELFP10210](#) [ELFT07250](#)  
[ELVD12100](#) [ELVF09400](#) [ELXH071G0E](#) [1725220000](#) [1760336](#) [1855000000](#) [19346](#) [1946309](#) [1973592](#) [19892](#) [25.320.4053.1](#) [25.320.4553.9](#)  
[25.320.4753.1](#) [25.320.5453.1](#) [25.340.0353.1](#) [25.340.1053.1](#) [25.345.3553.0M001](#) [25.640.3553.1](#) [SH02-5,08](#) [SH06-3,81](#) [SH08-5,08](#) [SH08-](#)  
[5,08-K](#) [SH12-5,08](#) [SHS04-5,00](#) [30.303](#) [30.305](#) [30.306](#) [PHP09-5,08](#) [25.193.0453.0](#) [25.320.4653.1](#) [25.332.2453.1](#)